

Supporting information

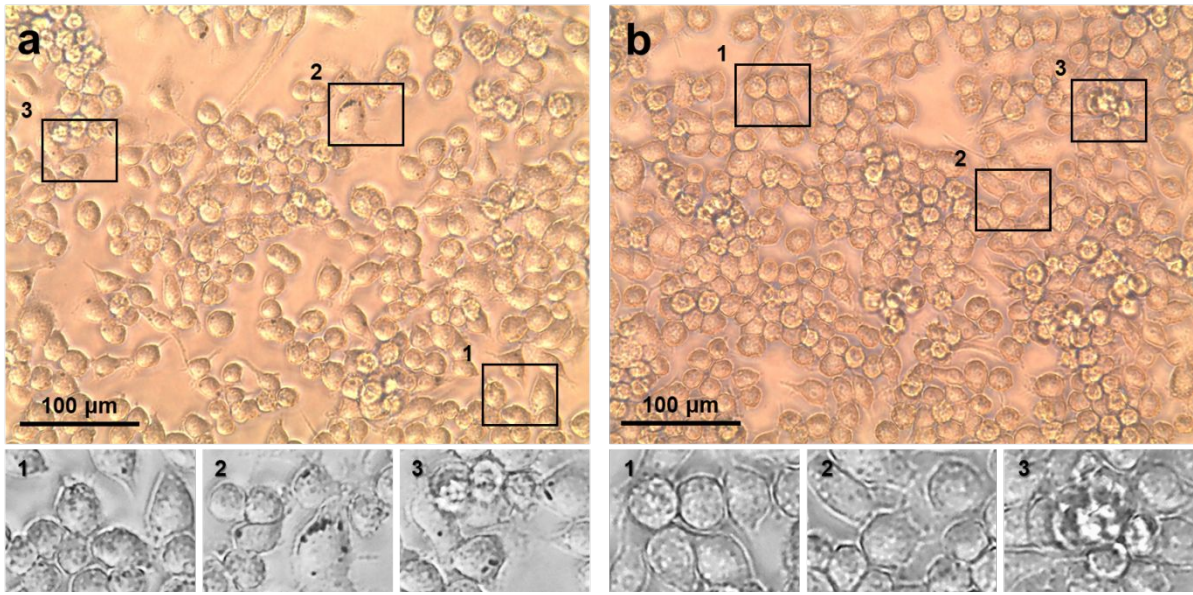
A non-spectroscopic migratory cell monitoring method by  
using retro-reflective Janus microparticles

*Ka Ram Kim, Danbi Lee, Kwan Young Jeong, Kyung Won Lee, Moon Suk Kim, Jae-Ho Kim,  
and Hyun C. Yoon\**

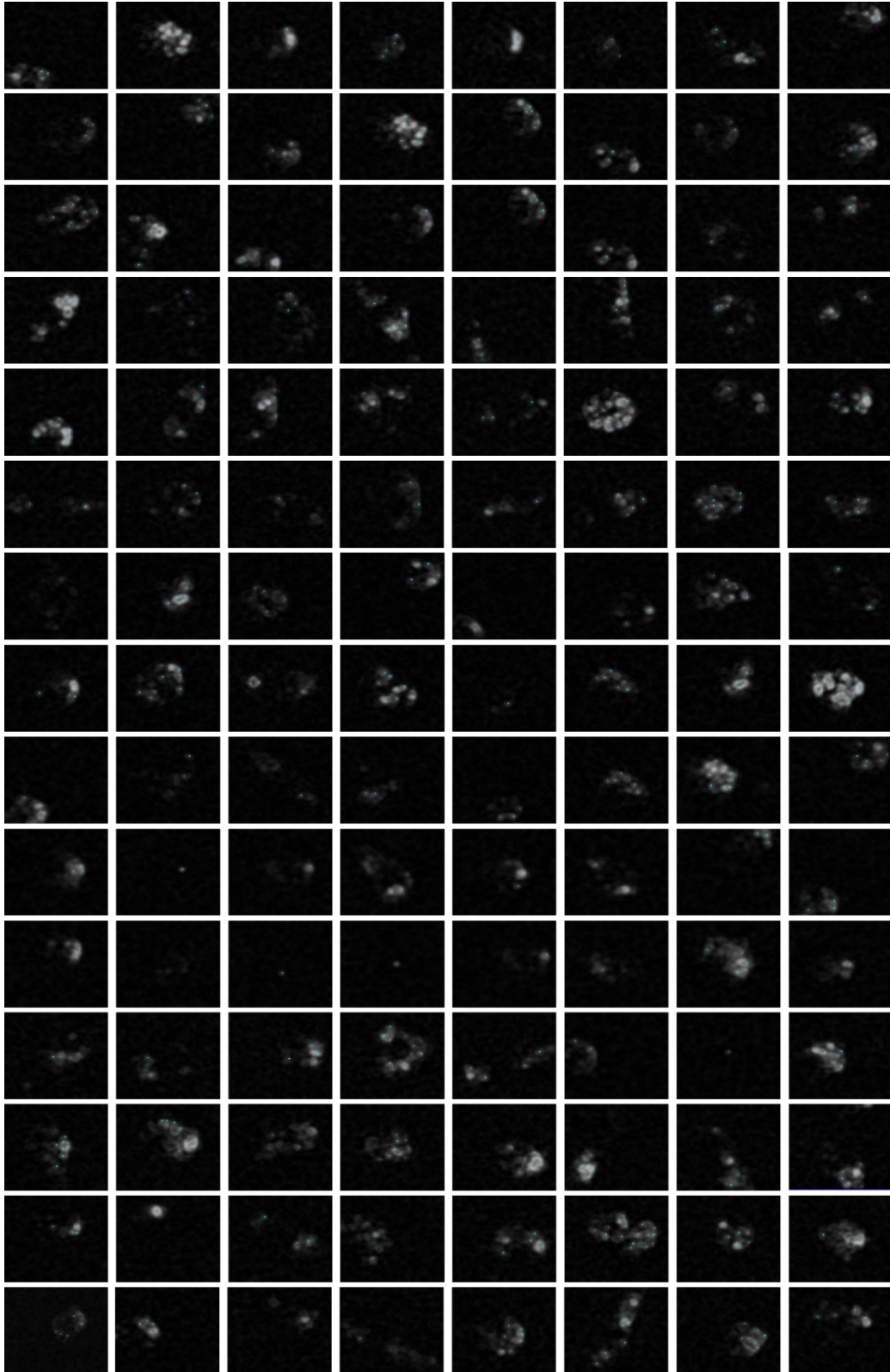
Department of Molecular Science & Technology, Ajou University, Suwon 16499, Republic  
of Korea

\*Author to whom correspondence should be addressed.

\*E-mail: [hcyoon@ajou.ac.kr](mailto:hcyoon@ajou.ac.kr) Tel: 82-31-219-2512



**Figure S1** Microscopic images from RAW 264.7 cell incubated with 10 µg/mL RJP in complete medium (a), RAW 264.7 cell incubated with the complete medium as control (b).



**Figure S2** Microscopic images of individual macrophages engulfing RJPs under retroreflection field (Each grid is  $55 \times 55 \mu\text{m}^2$  in size).