

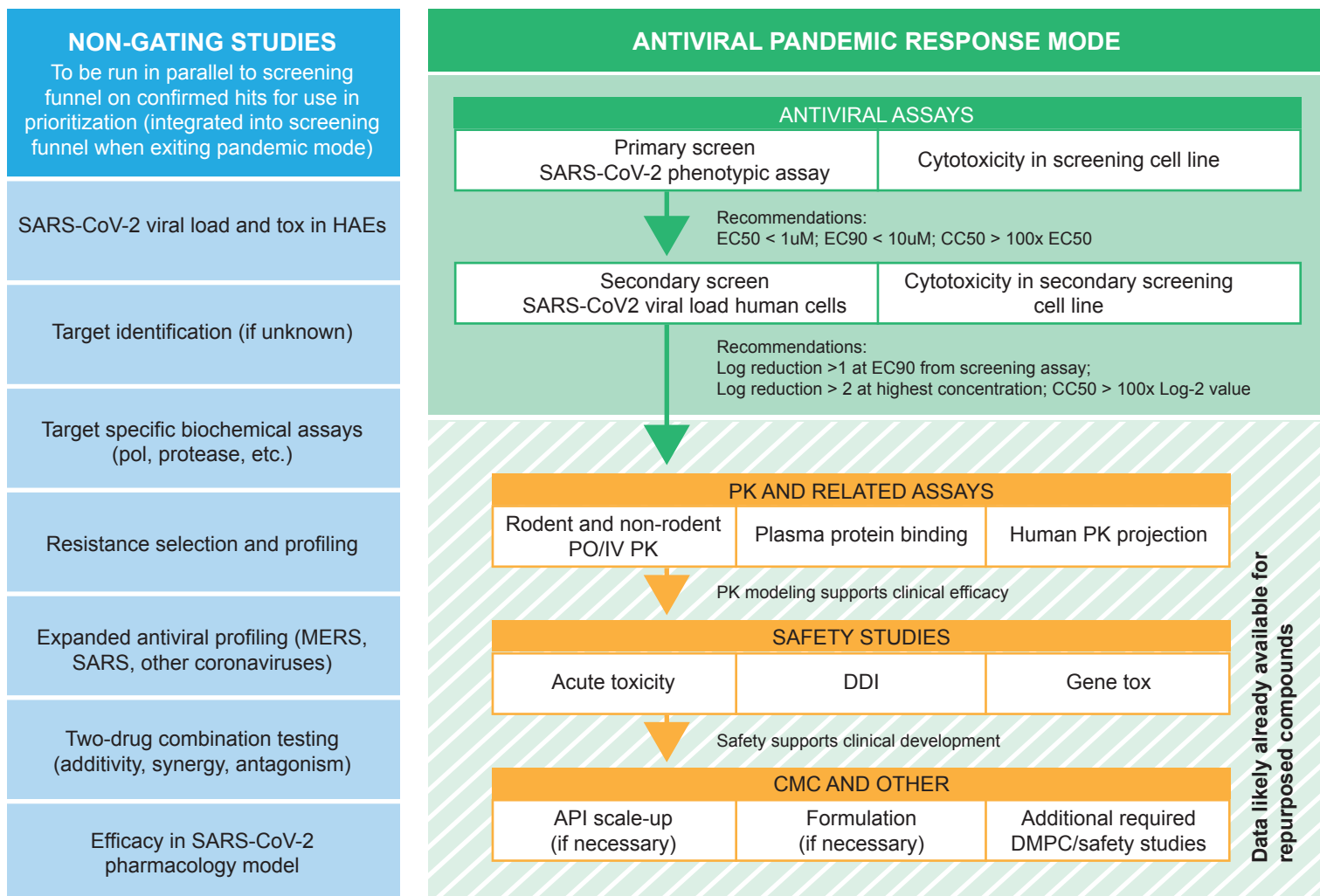
Cell Host & Microbe, Volume 28

Supplemental Information

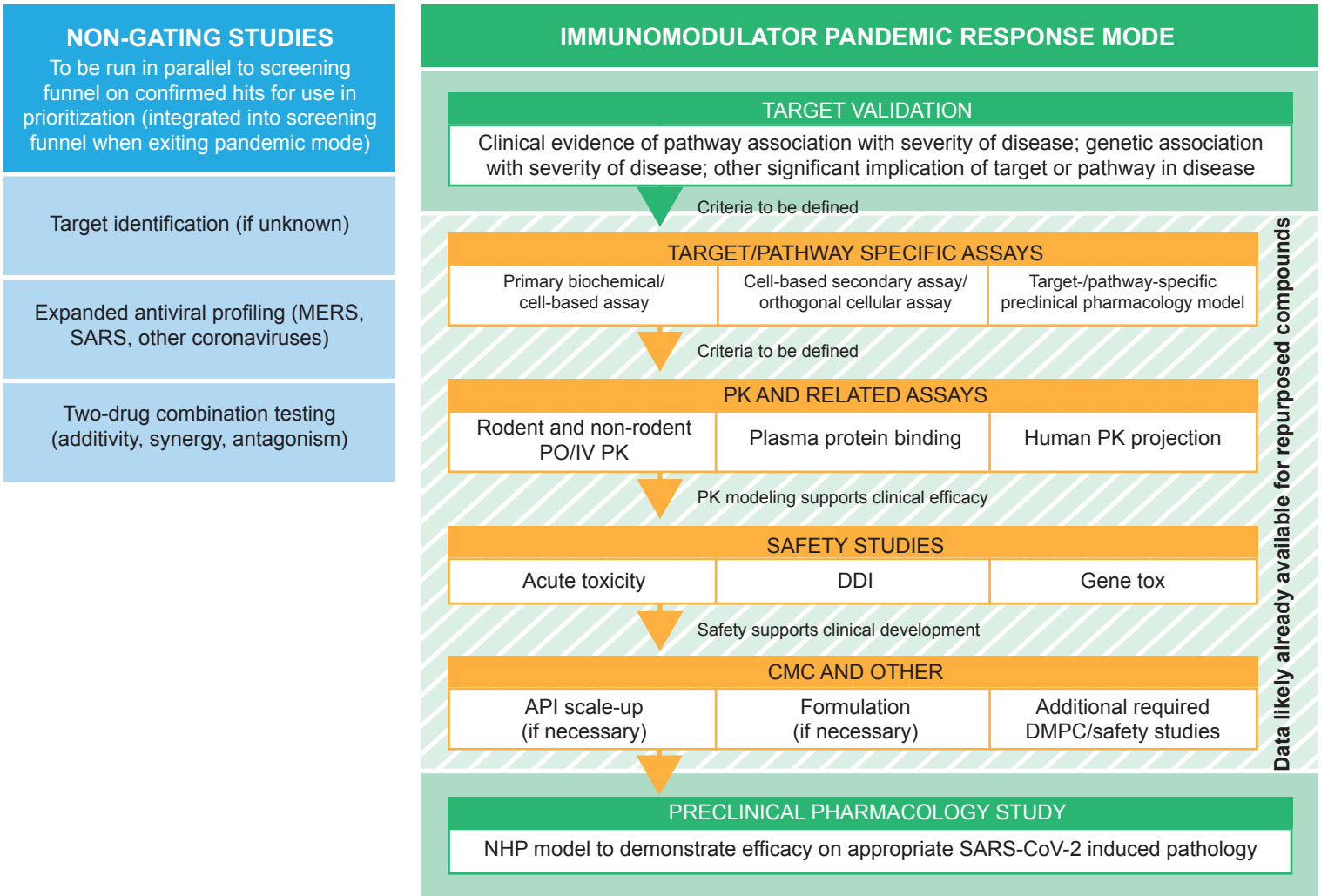
Accelerated Preclinical Paths to Support

Rapid Development of COVID-19 Therapeutics

Jay A. Grobler, Annaliesa S. Anderson, Prabhavathi Fernandes, Michael S. Diamond, Christine M. Colvis, Joseph P. Menetski, Rosa M. Alvarez, John A.T. Young, and Kara L. Carter

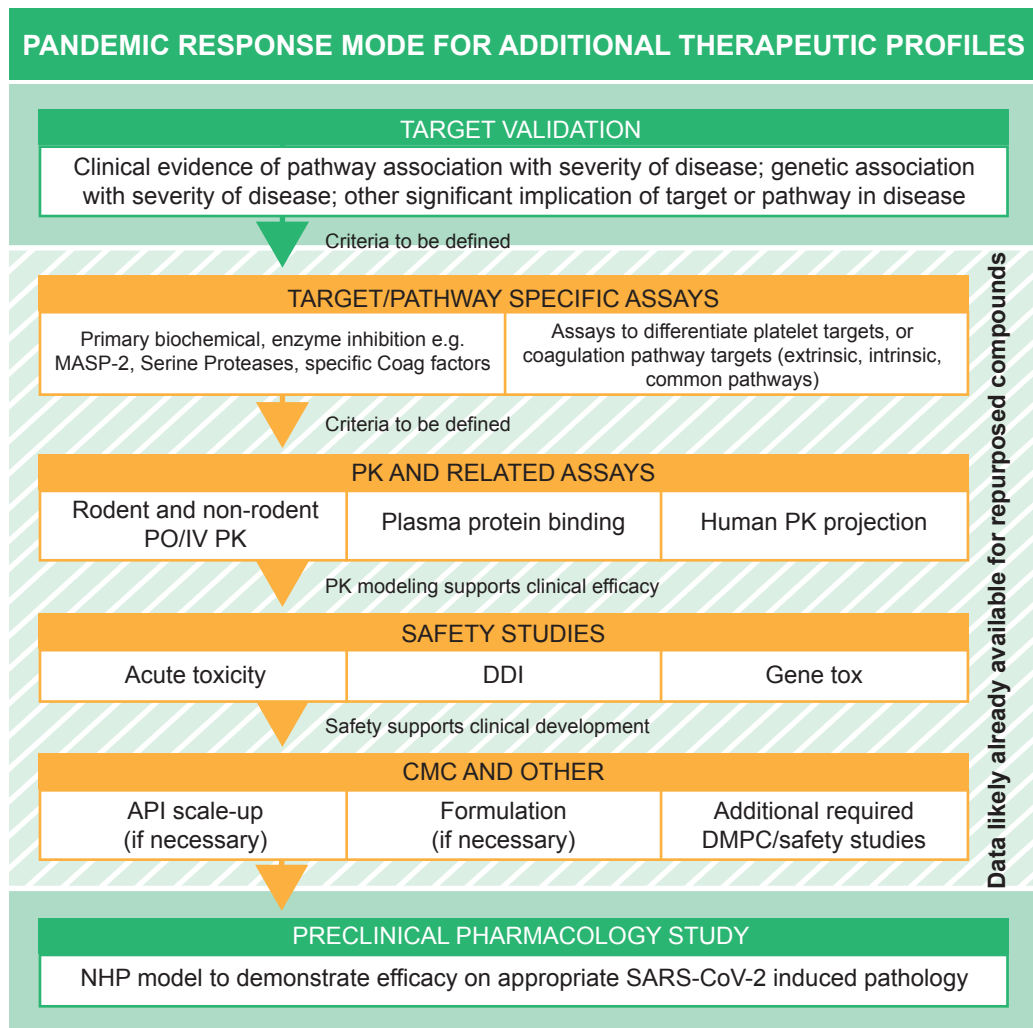


Supplemental Figure 1. Detailed blueprint for pandemic response mode for antivirals for COVID-19. Related to Figure 3, and “blueprint for antivirals”.



Supplemental Figure 2. Detailed blueprint for pandemic response mode for immunomodulators for COVID-19. Related to Figure 3 and “Blueprint for immunomodulators”.

<p>NON-GATING STUDIES</p> <p>To be run in parallel to screening funnel on confirmed hits for use in prioritization (integrated into screening funnel when exiting pandemic mode)</p>
<p>Target identification (if unknown)</p>
<p>Demonstrate either superior efficacy and safety or equivalent efficacy and improved safety compared with existing agents.</p>
<p>Expanded profiling (MERS, SARS, other coronaviruses) (e.g. MASP2 serine protease inhibitors can block viral entry (TMPRSS2), complement activation in addition to coagulation factors. ACE2-CoV-2 mouse model if active <i>in vitro</i>).</p>
<p>Potential for drug interactions with anti-complement, antibiotics, antivirals, immunomodulators</p>



Supplemental Figure 3. Detailed blueprint for pandemic response mode for additional therapeutic profiles for COVID-19. Related to Additional Therapeutic Profile.