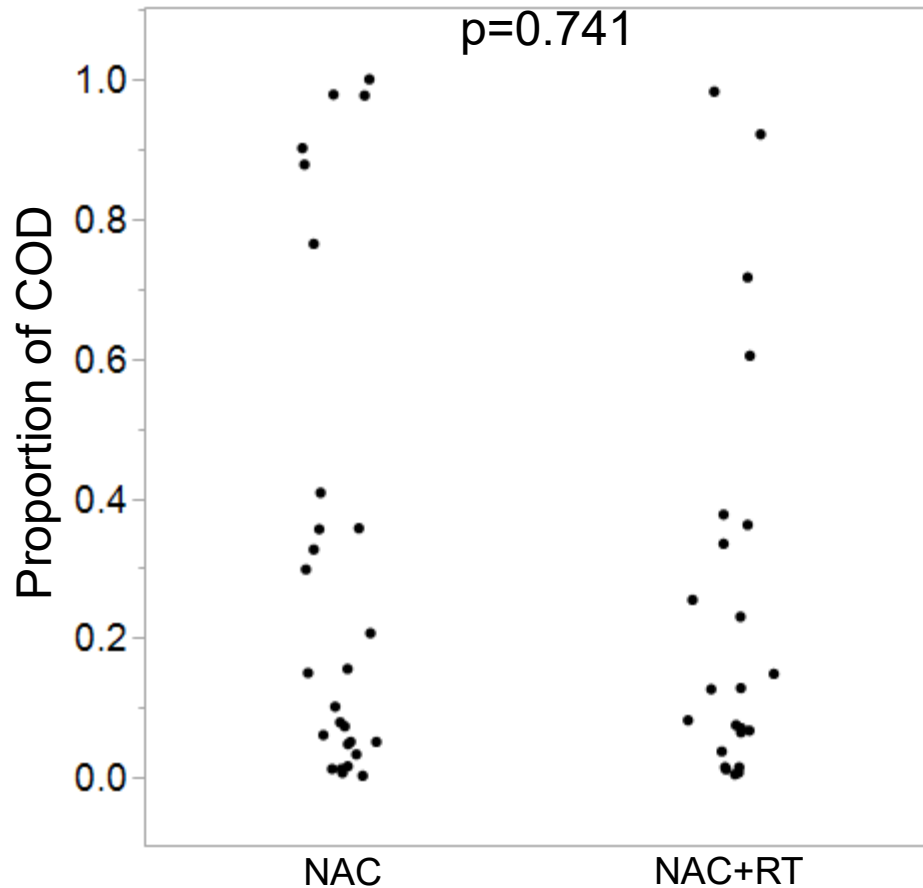


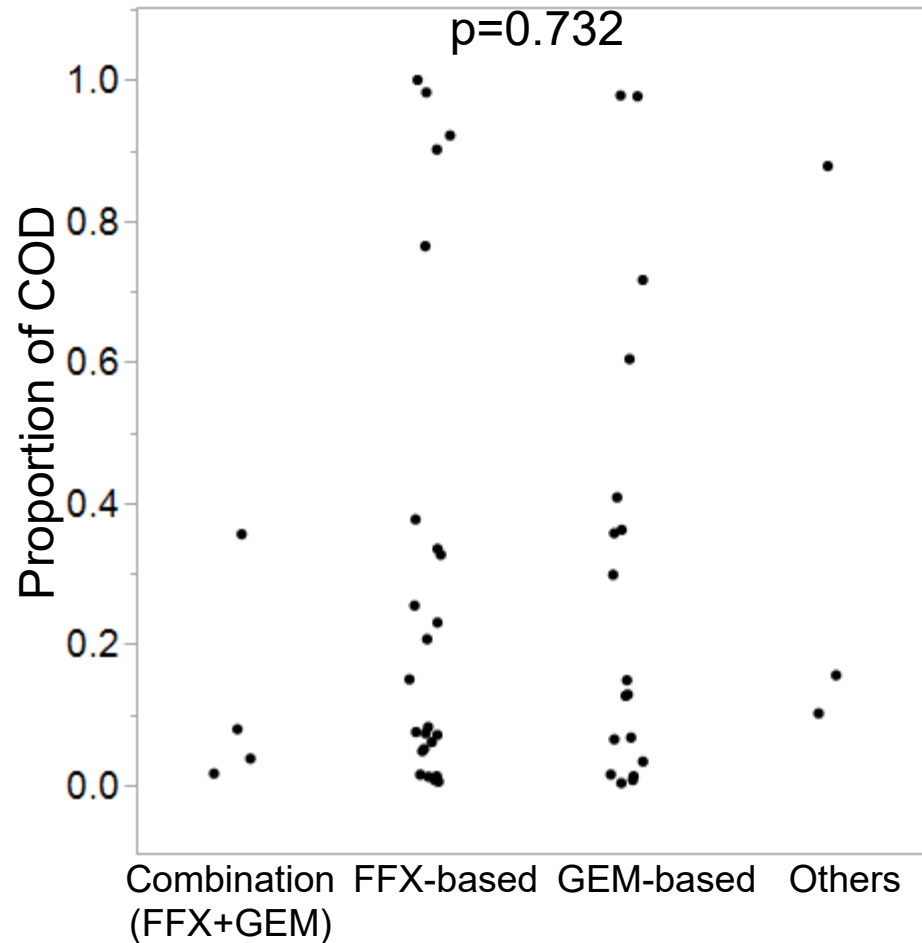
Supplementary Figure 1.

Proportion of cancer cells which are intraductal. Data are presented as scatter dot plot. (A) NAC group versus NAC+RT group. (B) Four different chemotherapy regimen groups.

A

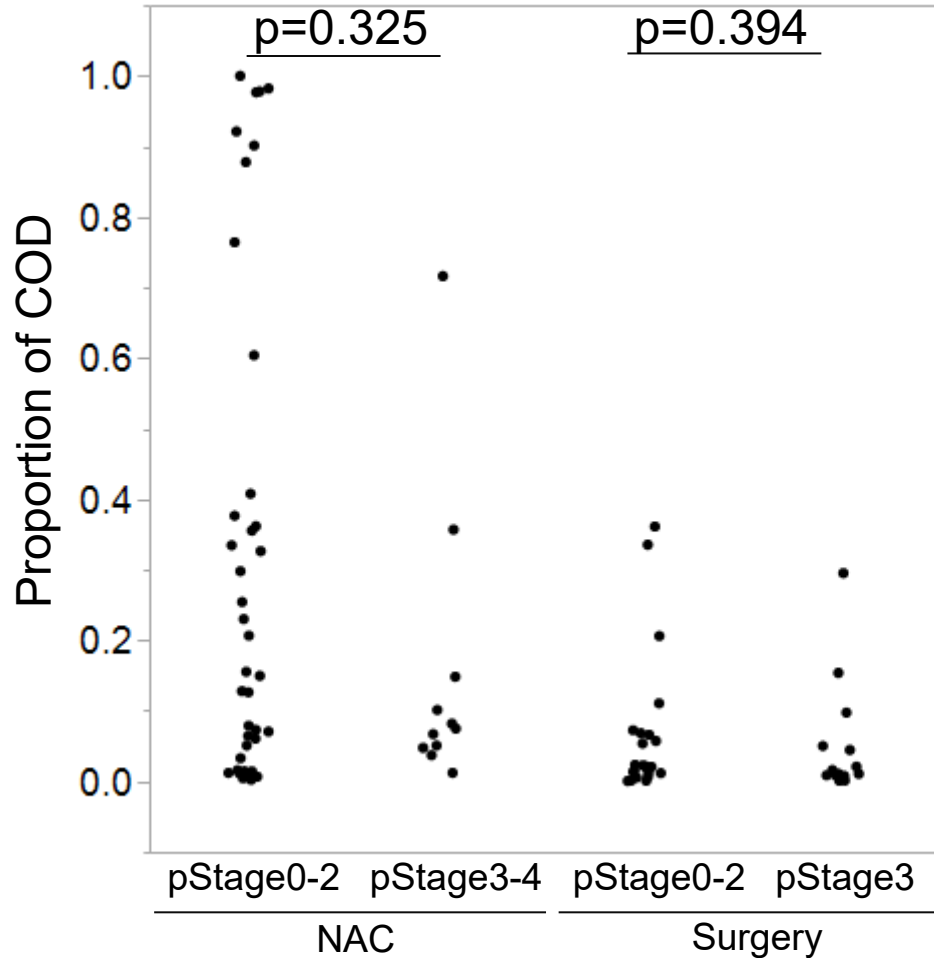


B



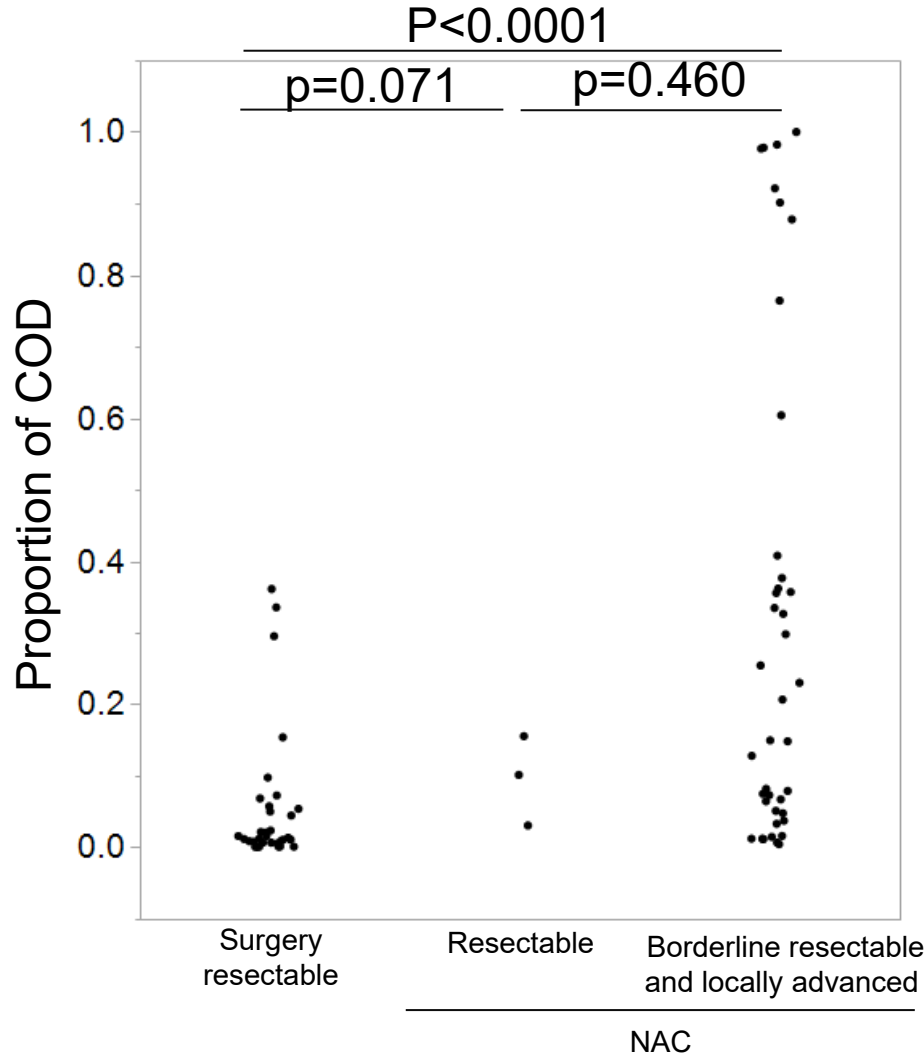
Supplementary Figure 2.

Proportion of cancer cells which are intraductal. Data are presented as scatter dot plot. pStage0-2 versus pStage3(or 3-4).



Supplementary Figure 3.

Proportion of cancer cells which are intraductal. Data are presented as scatter dot plot. Immediate surgery resectable versus NAC resectable versus NAC borderline resectable and locally advanced.



Supplementary Table 1: The mean proportion of cells in mitosis in intraductal and stromal cancer cells.

	COD cells	Stromal cancer cells	Paired t-test
NAC cases (n=16)	0.42%	0.46%	0.79
Immediate surgery cases (n=8)	0.43%	0.39%	0.64
Total (n=24)	0.42%	0.44%	0.90