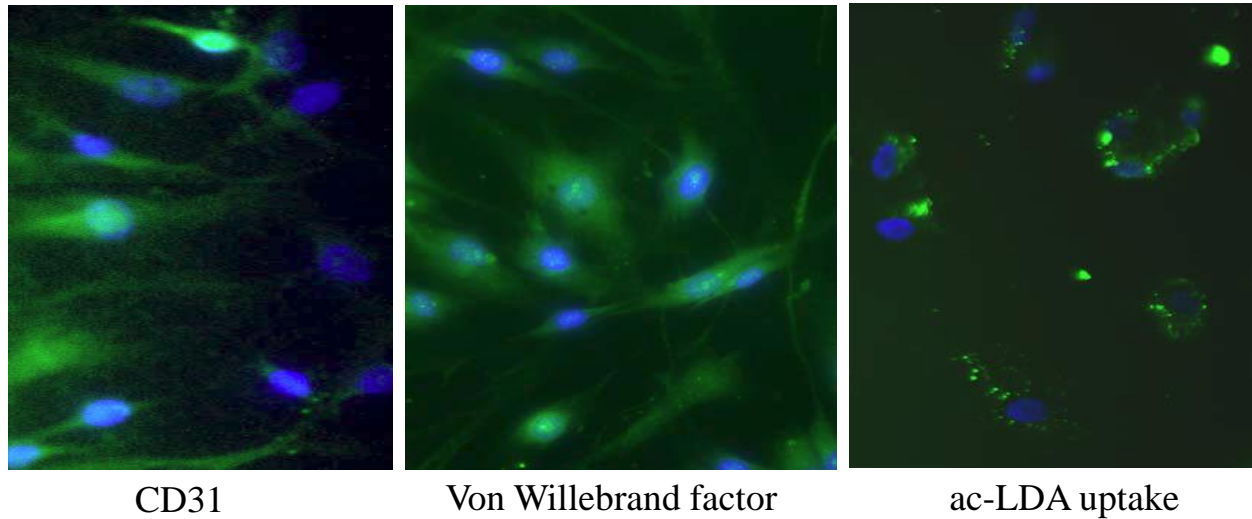
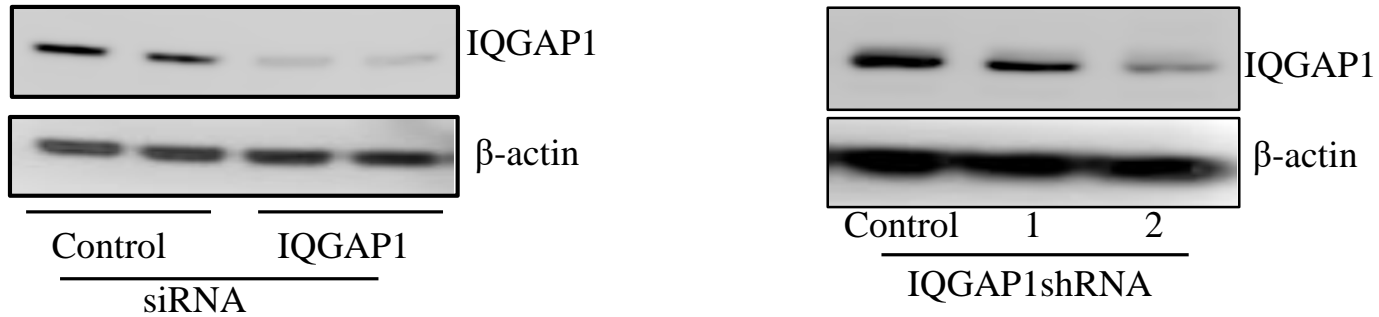


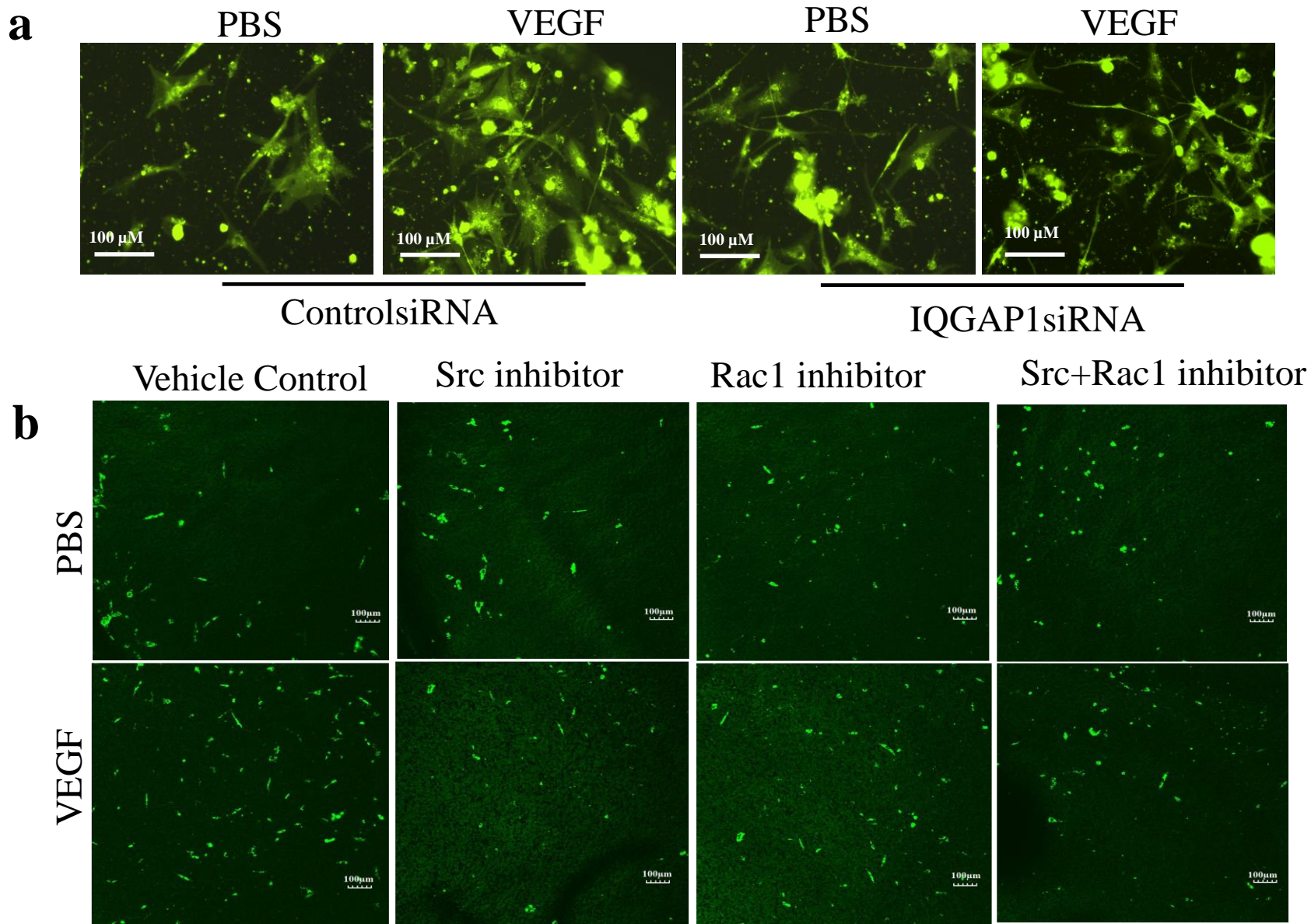
a Endothelial phenotypes of CECs



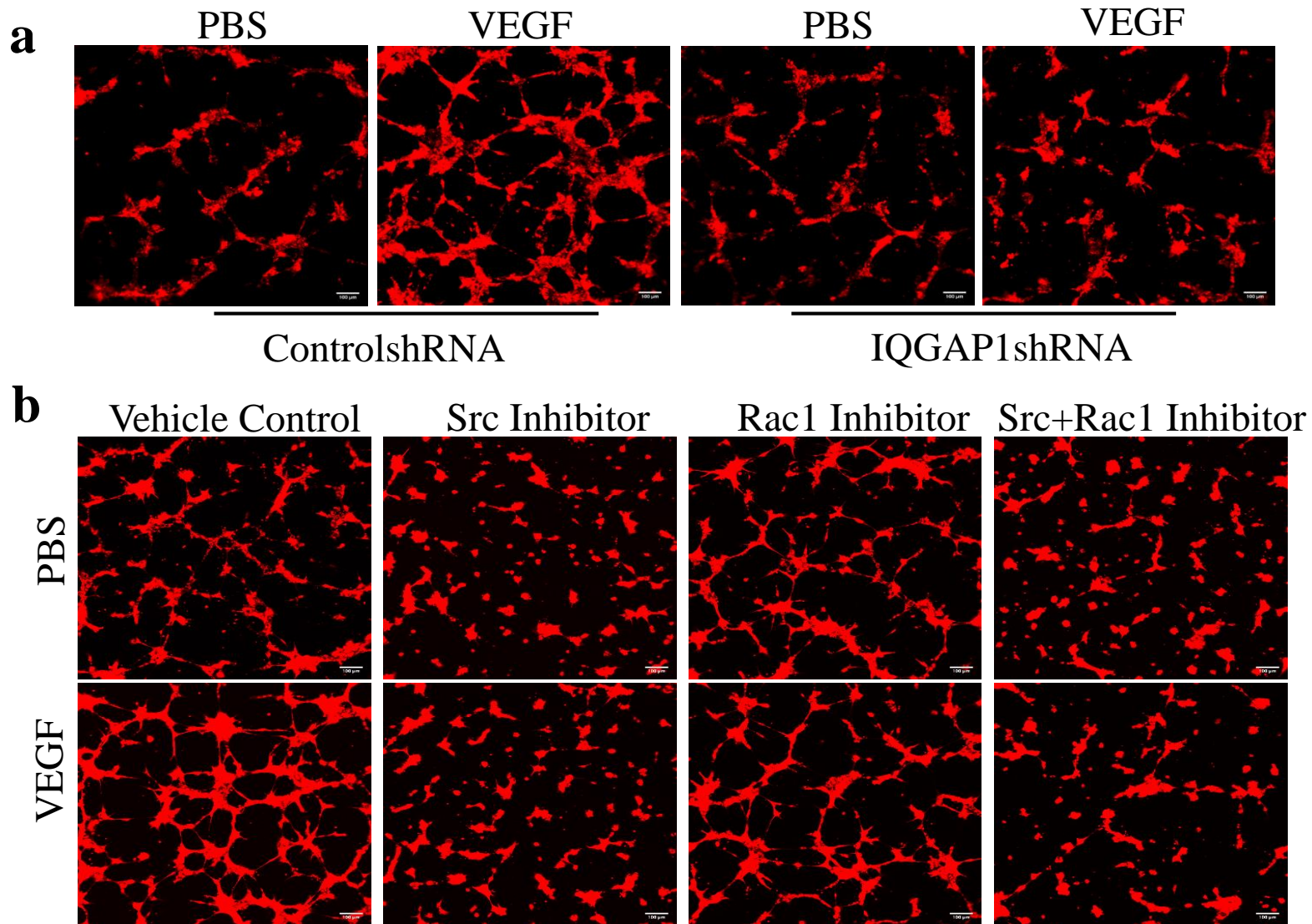
b IQGAP1 knockdown in CECs



Supplemental Figure 1. a. Immunostaining of endothelial cell markers, CD31, Von Willebrand factor, and ac-LDK uptake; b. Western blots of IQGAP1 in CECs transfected with Control siRNA or IQGAP1 siRNA or transduced with adenovirus-delivered shRNA (control, IQGAP1shRNA1 or IQGAP1shRNA2). IQGAP1shRNA2 was used in tube formation assay.



Supplemental Figure 2. a. Representative images taken by fluorescent microscope of CEC migration shown in Fig. 5e, and b. Representative images taken by confocal microscope of CEC migration shown in Fig. 8a.



Supplemental Figure 3. a. Representative images taken by confocal microscope of tube formation assays shown in Fig. 5f, and b. Representative images of tube formation shown in Fig. 8b.