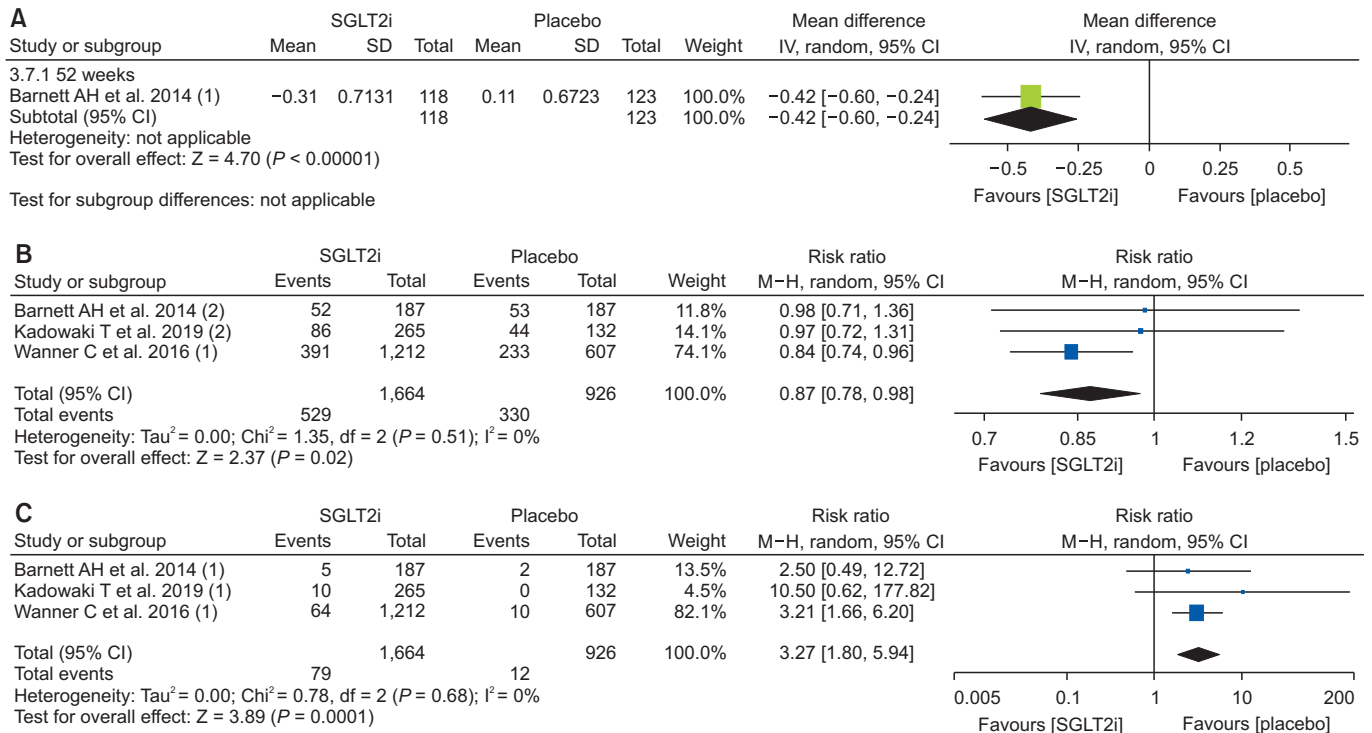


Supplementary Table 1. Characteristics of randomized clinical trials included in the meta-analysis

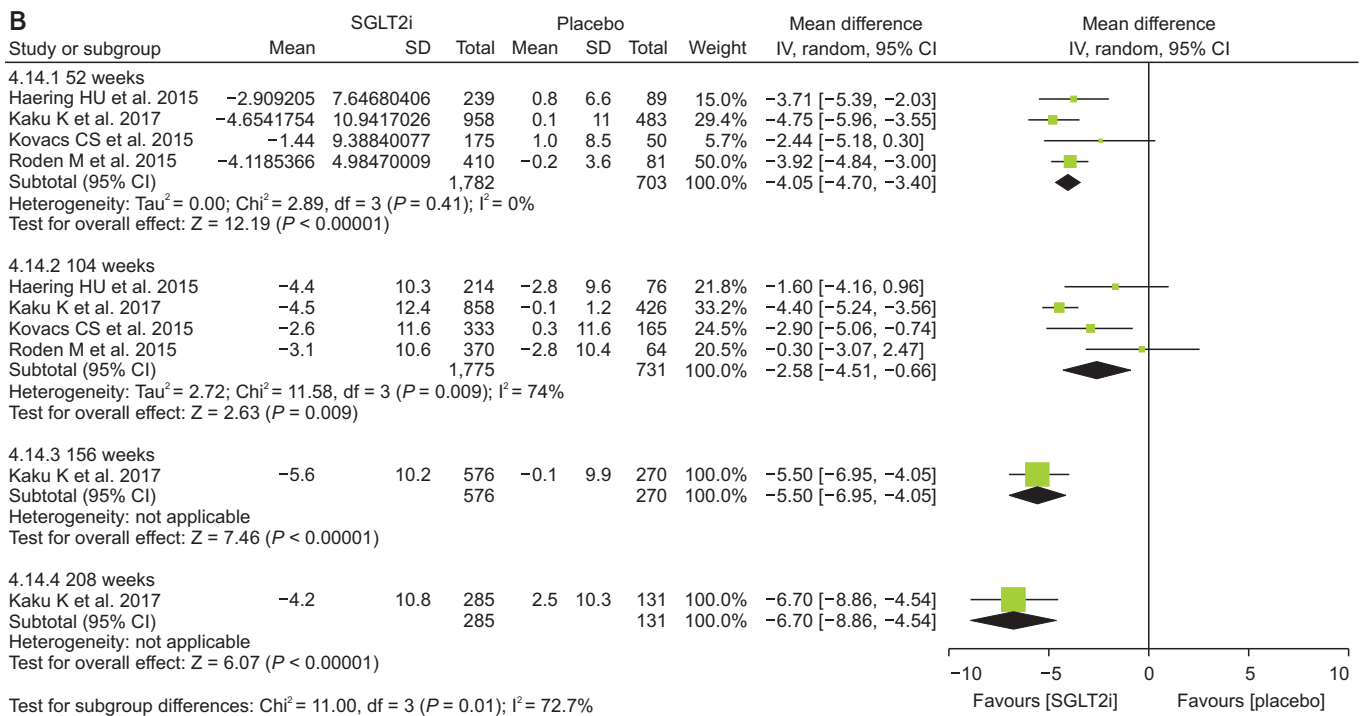
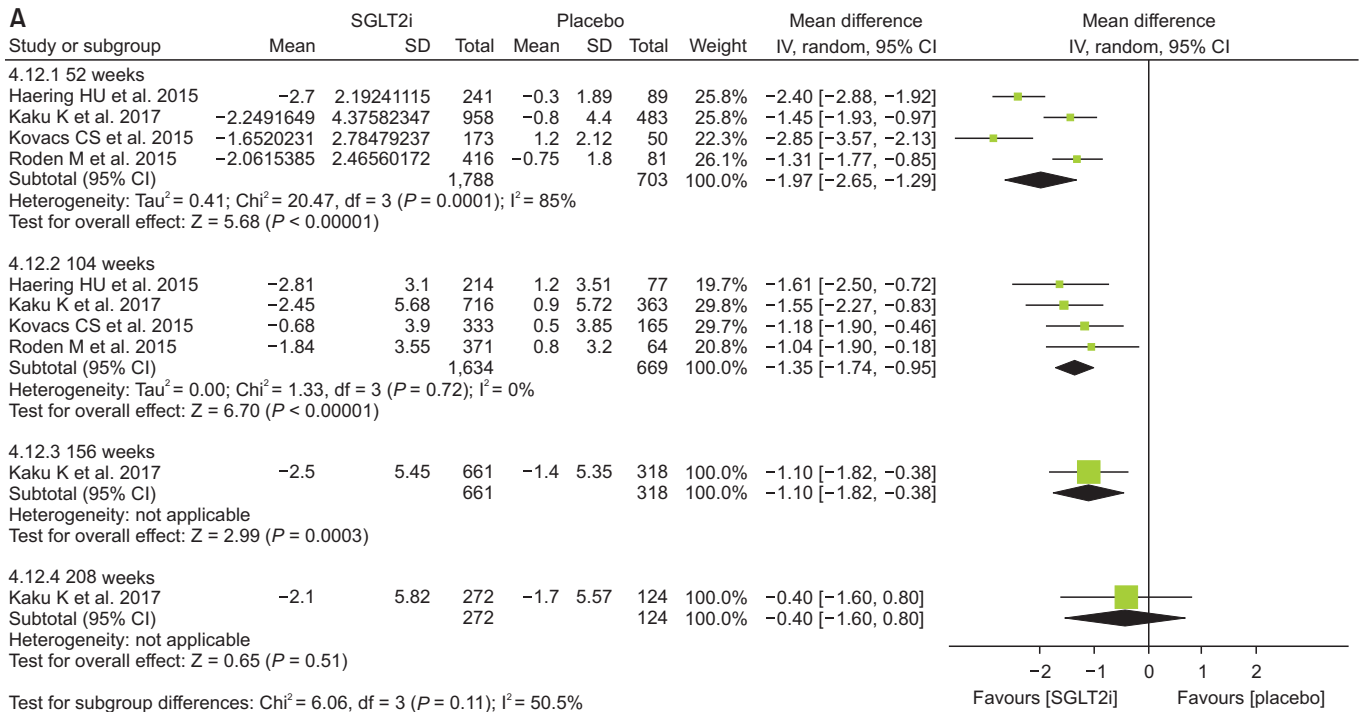
Author	Year	Experimental	Control	Background antidiabetic mediation(s)	Length of treatment	Number of participants
Barnett et al [22]	2014	Empagliflozin	Placebo	Naïve	52 weeks	290
Bailey et al [23]	2013	Dapagliflozin	Sulphonylurea	Various	208 weeks	801
Haering et al [24]	2015	Empagliflozin	Placebo	Metformin, sulphonylurea	76 weeks	666
Kaku et al [21]	2017	Empagliflozin	Placebo	Various	Median: 3.1 years	1,517
Kohan et al [25]	2014	Dapagliflozin	Placebo	Insulin, sulphonylurea, thiazolidinedione	104 weeks	252
Kovacs et al [26]	2015	Empagliflozin	Placebo	Metformin, thiazolidinedione	76 weeks	498
Merker et al [27]	2015	Empagliflozin	Placebo	Metformin	76 weeks	637
Roden et al [28]	2015	Empagliflozin	Placebo, sitagliptin	Naïve	76 weeks	676
Rosenstock et al [29]	2015	Empagliflozin	Placebo	Insulin	78 weeks	494
Wanner et al [10]	2016	Empagliflozin	Placebo	Various	Median: 2.6 years	7,020
Wilding et al [30]	2014	Dapagliflozin	Placebo	Insulin	104 weeks	800
Wiviott et al [9]	2019	Dapagliflozin	Placebo	Various	Median: 4.2 years	17,160

	Bias arising from the randomization process	Bias due to deviations from intended interventions	Bias in measurement of the outcome	Bias due to missing outcome data	Bias in selection of the reported result
Barnett AH et al. 2014	●	●	●	●	●
Bailey CJ et al. 2013	●	●	●	●	●
Haering HU et al. 2015	●	●	●	●	●
Kohan DE et al. 2014	●	●	●	●	●
Kovacs CS et al. 2015	●	●	●	●	●
Merker L et al. 2015	●	●	●	●	●
Roden M et al. 2015	●	●	●	●	●
Rosenstock J et al. 2015	●	●	●	●	●
Wanner C et al. 2016	●	●	●	●	●
Wilding JP et al. 2014	●	●	●	●	●
Wiviott SD et al. 2019	●	●	●	●	●

Supplementary Figure 1. Risk of bias assessment.

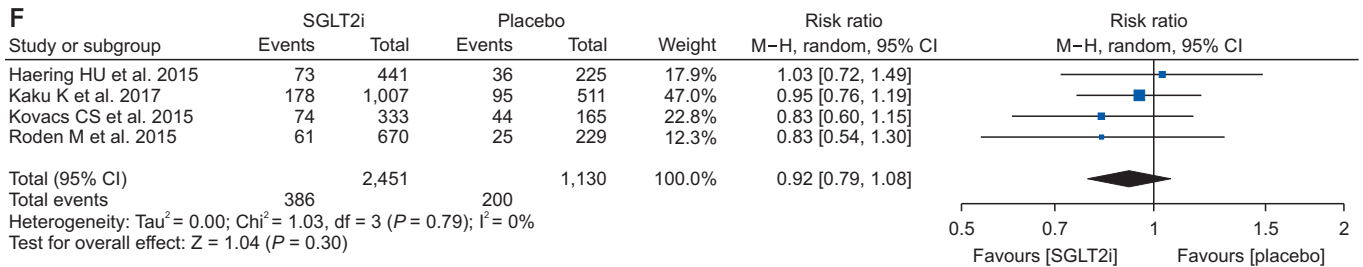
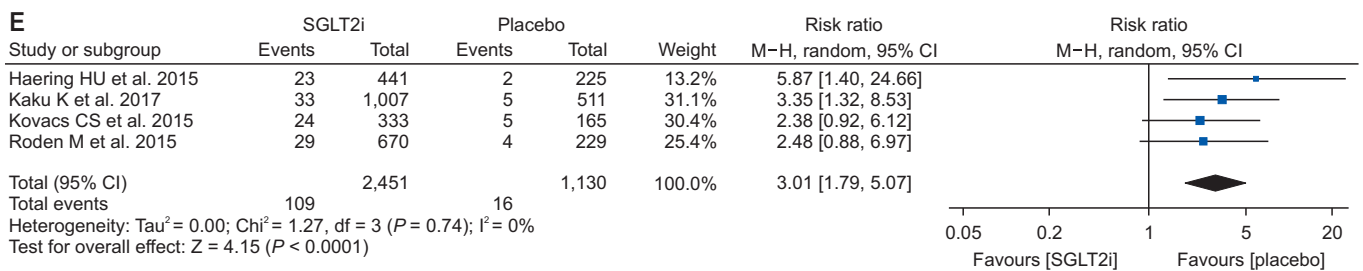
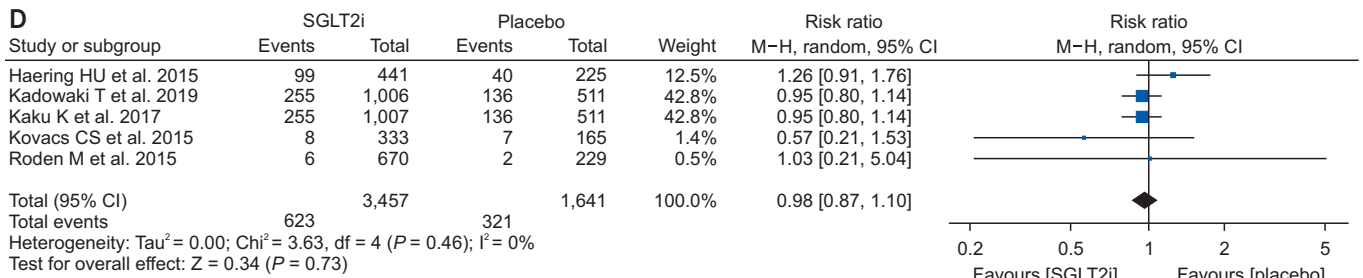
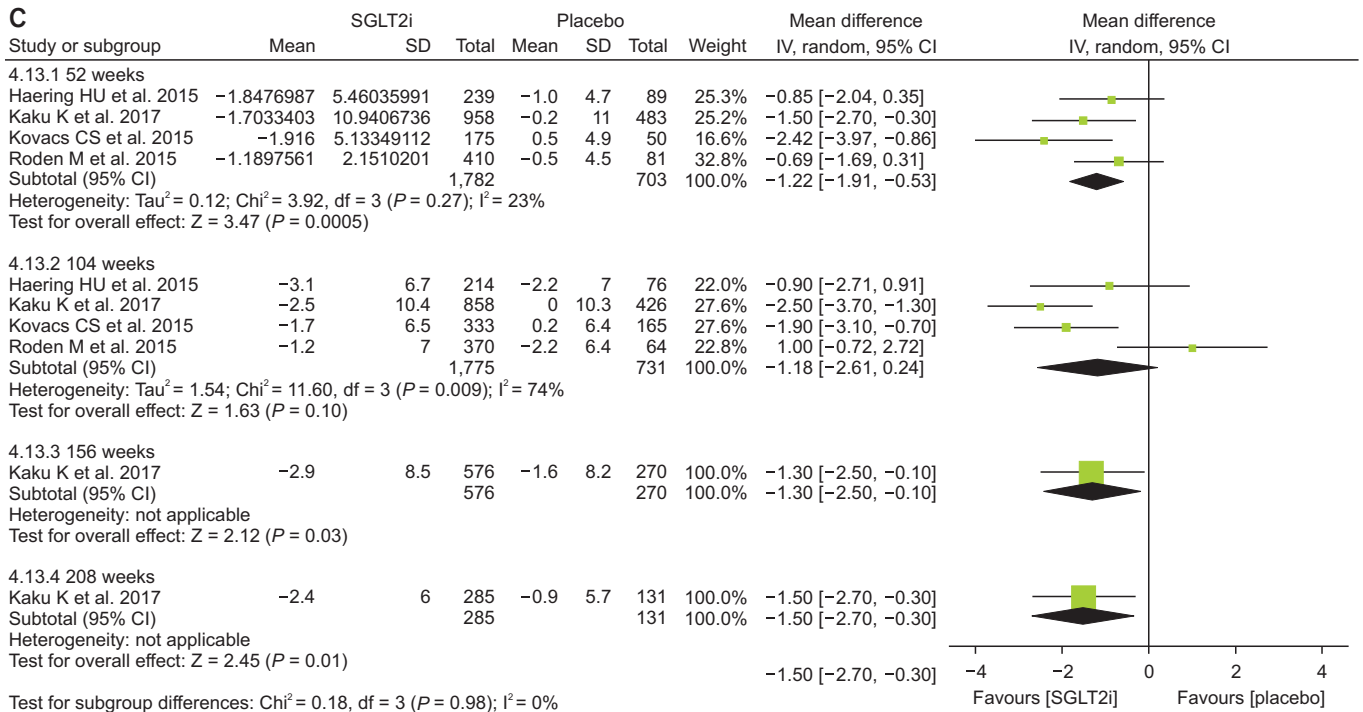


Supplementary Figure 2. Results of patients with estimated glomerular filtration rate of less than 60 mL/min/1.73 m². Effect of sodium-glucose cotransporter-2 inhibitors (SGLT2i) on (A) change of glycosylated hemoglobin, (B) hypoglycemia, and (C) genital infection. CI, confidence interval; IV, inverse variance; SD, standard deviation.

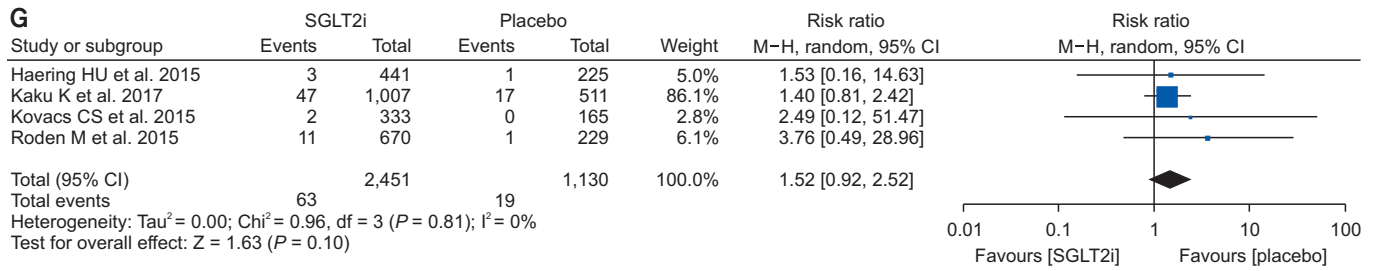


Supplementary Figure 3. Result of Asian dominant studies. Effects of sodium-glucose cotransporter-2 inhibitors (SGLT2i) on (A) body weight, (B) systolic blood pressure, (C) diastolic blood pressure, (D) hypoglycemia, (E) genital infection, (F) urinary tract infection, and (G) volume depletion.

CI, confidence interval; IV, inverse variance; M-H, Mantel-Haenszel; SD, standard deviation.



Supplementary Figure 3. Continued 1.



Supplementary Figure 3. Continued 2.