

Kurtosis

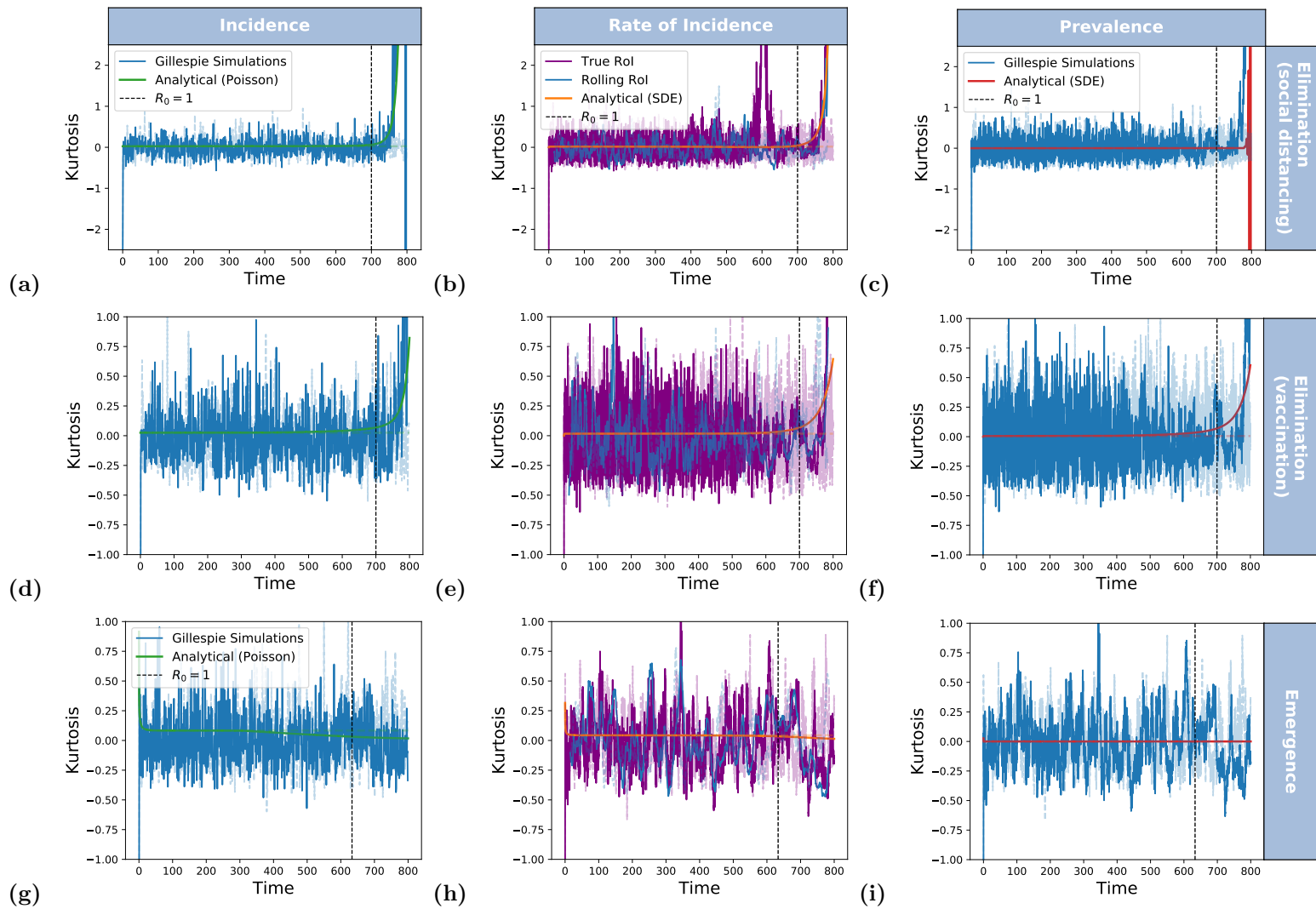


Fig. S8. Comparing predictions to simulations for Kurtosis. For each model: a,b,c). SIS social distancing (elimination); d,e,f). SIS increasing vaccination (elimination); g,h,i). SIS increasing transmission, (emergence) we calculate the kurtosis between 500 homogeneous realisations at every time step (daily). Each figure shows: Poisson Process distribution (green line); dynamic predictions (red line) and Gillespie simulations (Ext and Emg, blue line).