

Supplemental Data

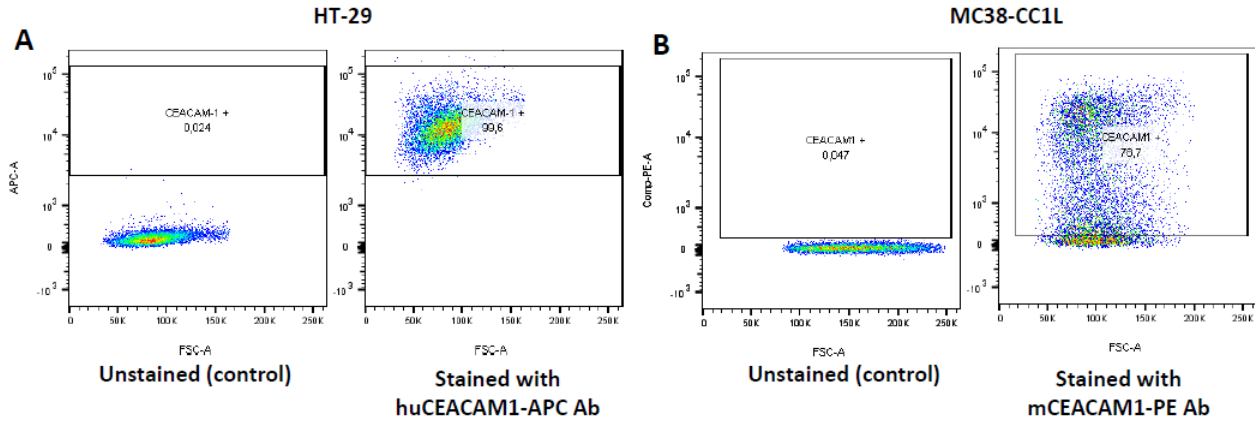


Figure S1. CEACAM 1 is present on the colon carcinoma cell lines. **A.** Flow cytometry of human CC1 on human colon carcinoma cell line (HT-29) shows ~100% stained CC1 on the surface of the cells (bottom panel) as compared to the unstained control (top panel). **B.** Flow cytometry of murine CC1 on murine colon carcinoma cell line MC38 shows ~75% stained CC1 on the surface of the cells (bottom panel) as compared to the unstained control (top panel).

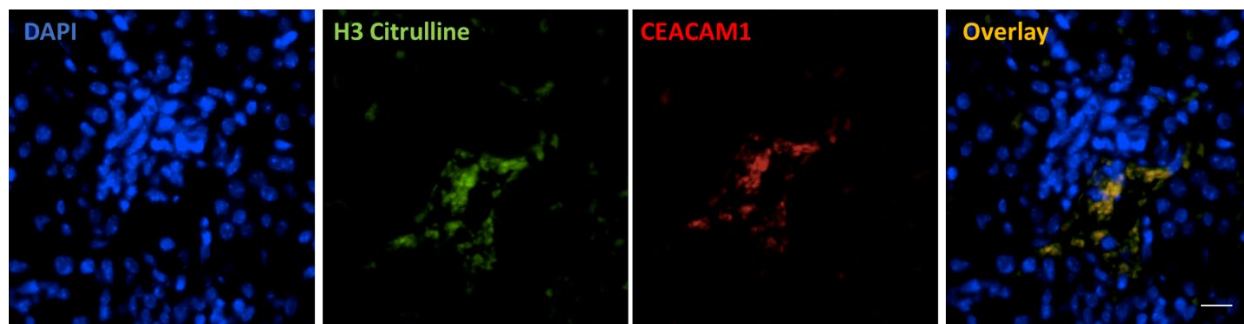


Figure S2. CEACAM1 is present on NETs *in vivo*. Multi-IF using DAPI (in blue), H3Citrulline (NETs marker, in green) and CEACAM1 (in red) was performed on liver extracted from a mouse 24h post cecal-ligation-puncture. Images were acquired with a 20x magnification using the EVOS cell imaging system, scale bar: 25 μ m.

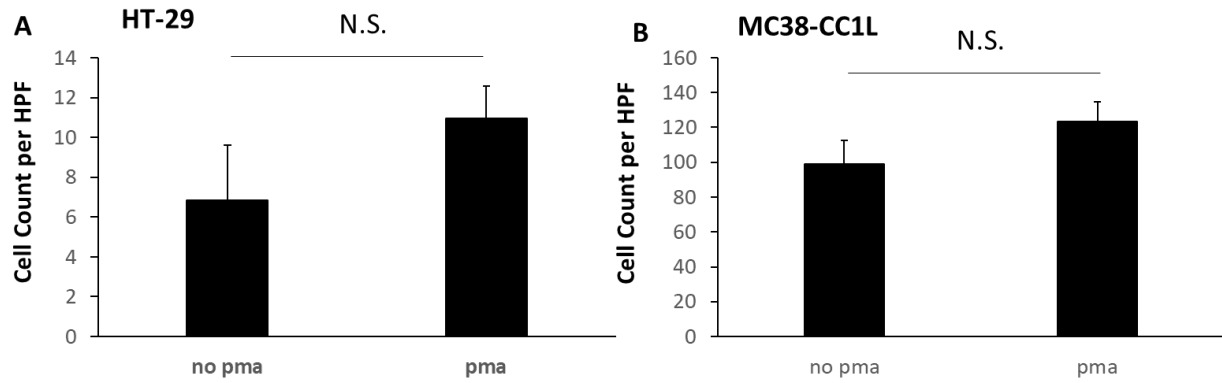


Figure S3. PMA does not affect tumor cell migration in the absence of neutrophils. A. Bar graph of average (+/- SEM) number of HT-29 cells migrating towards 10% FBS in the presence or absence of 500 nM PMA in Boyden chambers (n=5, N.S.=not significant). **B.** Bar graph of average (+/- SEM) number of MC38-CC1L cells migrating towards 10% FBS in the presence or absence of 500 nM PMA in Boyden chambers (n=3, N.S.=not significant).

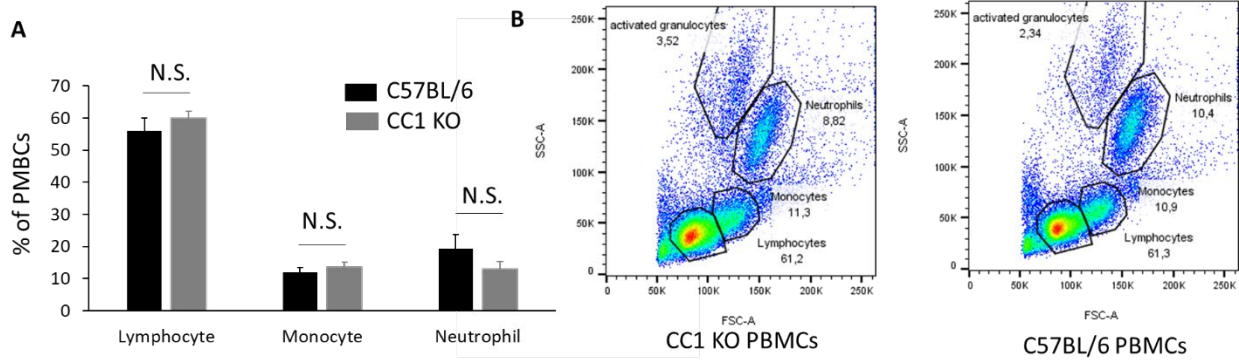


Figure S4. CC1 KO and C57BL/6 neutrophils have the same number of neutrophils in circulation. **A.** Bar graph from flow cytometry performed on circulating WBCs extracted from C57BL/6 and CC1 KO mice. n=3, N.S.= Not significant. **B.** Representative flow cytometry profiles of the circulating WBC populations in C57BL/6 and CC1 KO mice.

Table S1. List of identified proteins on huNETs using tandem Mass Spectrometry. Shown in table S1 is a list of the 583 proteins identified by tandem Mass Spectrometry as present on all the 3 NET samples isolated from 3 different healthy individuals.

#	Identified Proteins (583)	Accession Number
1	isoform H17 HomoSapiens GN=MPO PE=1 SV=250	P05164 (+2)
2	peroxidase isoform Iso 1 HomoSapiens GN=EPX PE=1 SV=77	P11678
3	isoform Iso 1 HomoSapiens GN=LTF PE=1 SV=91	P02788
4	alpha-M isoform Iso 1 HomoSapiens GN=ITGAM PE=1 SV=74	P11215
5	G isoform Iso 1 HomoSapiens GN=CTSG PE=1 SV=69	P08311
6	S100-A9 isoform Iso 1 HomoSapiens GN=S100A9 PE=1 SV=68	P06702
7	cytoplasmic 1 isoform Iso 1 HomoSapiens GN=ACTB PE=1 SV=160	P60709 (+1)
8	isoform Iso 1 HomoSapiens GN=MYH9 PE=1 SV=238	P35579
9	elastase isoform Iso 1 HomoSapiens GN=ELANE PE=1 SV=77	P08246
10	S100-A8 isoform Iso 1 HomoSapiens GN=S100A8 PE=1 SV=56	P05109
11	subunit beta isoform Iso 1 HomoSapiens GN=HBB PE=1 SV=149	P68871
12	A6 isoform Iso 1 HomoSapiens GN=ANXA6 PE=1 SV=92	P08133
13	elastase inhibitor isoform Iso 1 HomoSapiens GN=SERPIN1 PE=1 SV=53	P03740
14	band 7 integral membrane protein isoform Iso 1 HomoSapiens GN=STOM PE=1 SV=58	P27105
15	beta-2 isoform Iso 1 HomoSapiens GN=ITGB2 PE=1 SV=183	P05107
16	isoform Iso 1 HomoSapiens GN=LCP1 PE=1 SV=112	P13796
17	isoform Iso 1 HomoSapiens GN=AZU1 PE=1 SV=29	P02160
18	isoform Iso 1 HomoSapiens GN=FLNA PE=1 SV=231	P21333 (+1)
19	cationic protein isoform Iso 1 HomoSapiens GN=RNASE3 PE=1 SV=30	P12724
20	disulfide-isomerase isoform Iso 1 HomoSapiens GN=PAHB PE=1 SV=95	P07237
21	isoform Iso 1 HomoSapiens GN=ACTN1 PE=1 SV=176	P12814
22	H4 isoform Iso 1 HomoSapiens GN=HIST1H4A;HIST1H4B;HIST1H4C;HIST1H4D;HIST1H4E;HIST1H4F;HIST1H4H;HIST1H4I;HIST1H4J;HIST1H4K;HIST1H4L;HIST2H4A;HIST2H4B;HIST4H4 PE=1 SV=188	P62805
23	GTPase-activating-like protein IQGAP1 isoform Iso 1 HomoSapiens GN=IQGAP1 PE=1 SV=136	P46940
24	permeability-increasing protein isoform Iso 1 HomoSapiens GN=BPI PE=1 SV=30	P17213
25	b-245 heavy chain isoform Iso 1 HomoSapiens GN=CYBB PE=1 SV=82	P04839
26	isoform Iso 1 HomoSapiens GN=PRTN3 PE=1 SV=60	P24158
27	A1 isoform Iso 1 HomoSapiens GN=ANXA1 PE=1 SV=77	P04083
28	tyrosine-protein phosphatase C isoform Iso 1 HomoSapiens GN=PTPRC PE=1 SV=143	P08575 (+1)
29	isoform Iso 1 HomoSapiens GN=TLN1 PE=1 SV=202	Q9Y490
30	defensin 1 isoform Iso 1 HomoSapiens GN=DEFA1;DEFA1B PE=1 SV=51	P59665 (+1)
31	marrow proteoglycan isoform Iso 1 HomoSapiens GN=PRG2 PE=1 SV=54	P13727
32	subunit alpha isoform Iso 1 HomoSapiens GN=HBA1;HBA2 PE=1 SV=295	P69905
33	C isoform Iso 1 HomoSapiens GN=LZY PE=1 SV=130	P61626
34	kDa glucose-regulated protein isoform Iso 1 HomoSapiens GN=HSPA5 PE=1 SV=109	P11021
35	intestinal isoform Iso 1 HomoSapiens GN=MGAM PE=1 SV=72	Q43451
36	nucleotide-binding protein (G) subunit alpha-2 isoform Iso 1 HomoSapiens GN=GNAI2 PE=1 SV=81	P04899
37	ribonuclease isoform Iso 1 HomoSapiens GN=RNASE2 PE=1 SV=53	P10153
38	A3 isoform Iso 1 HomoSapiens GN=ANXA3 PE=1 SV=40	P12429
39	A11 isoform Iso 1 HomoSapiens GN=ANXA11 PE=1 SV=63	P50995
40	synthase subunit beta, mitochondrial isoform Iso 1 HomoSapiens GN=ATP5B PE=1 SV=148	P06576
41	kinase isozymes M1/M2 isoform M2 HomoSapiens GN=PKM2 PE=1 SV=154	P14618
42	isoform Iso 1 HomoSapiens GN=FLOT2 PE=1 SV=58	Q14254
43	plasma membrane-associated protein isoform Iso 1 HomoSapiens GN=APMAP PE=1 SV=59	Q9H0C9
44	isoform Iso 1 HomoSapiens GN=MSN PE=1 SV=112	P26038
45	isoform Iso 1 HomoSapiens GN=DYSF PE=1 SV=46	O75923 (+13)
46	dehydrogenase isoform Iso 1 HomoSapiens GN=GAPDH PE=1 SV=195	P04406
47	antigen-related cell adhesion molecule 8 isoform Iso 1 HomoSapiens GN=CEACAM8 PE=1 SV=30	P31997
48	H2B type 1-K isoform Iso 1 HomoSapiens GN=HIST1H2BK PE=1 SV=70	O60814 (+8)
49	alpha-glucosidase AB isoform Iso 1 HomoSapiens GN=GANAB PE=1 SV=101	Q14697 (+1)
50	type II cytoskeletal 1 isoform Iso 1 HomoSapiens GN=KRT1 PE=1 SV=165	P04264
51	isoform Iso 1 HomoSapiens GN=CAT PE=1 SV=94	P04040
52	isoform Iso 1 HomoSapiens GN=CANX PE=1 SV=98	P27824
53	isoform Iso 1 HomoSapiens GN=PFN1 PE=1 SV=60	P07737
54	disulfide-isomerase A3 isoform Iso 1 HomoSapiens GN=PDIA3 PE=1 SV=102	P30101
55	isoform Iso 1 HomoSapiens GN=CALR PE=1 SV=81	P27797
56	isoform Iso 1 HomoSapiens GN=VIM PE=1 SV=136	P08670
57	metalloproteinase-9 isoform Iso 1 HomoSapiens GN=MMP9 PE=1 SV=74	P14780
58	shock 70 kDa protein 1A/1B isoform Iso 1 HomoSapiens GN=HSPA1A;HSPA1B PE=1 SV=163	P08107
59	isoform Iso 1 HomoSapiens GN=GCA PE=1 SV=30	P28676
60	isoform Iso 1 HomoSapiens GN=UBB PE=1 SV=62	POCG47 (+3)
61	isoform Iso 1 HomoSapiens GN=HSP90B1 PE=1 SV=168	P14625
62	isoform Iso 1 HomoSapiens GN=TKT PE=1 SV=107	P29401
63	isoform Iso 1 HomoSapiens GN=FLOT1 PE=1 SV=90	O75955
64	carrier family 2, facilitated glucose transporter member 3 isoform Iso 1 HomoSapiens GN=SLC2A3 PE=1 SV=47	P11169
65	isoform Iso 1 HomoSapiens GN=SERPINA1 PE=1 SV=663	P01009
66	isoform Iso 2 HomoSapiens GN=GSN PE=1 SV=171	P06396.2
67	isoform Iso 1 HomoSapiens GN=CPNE3 PE=1 SV=48	O75131
68	phosphorylase, liver form isoform Iso 1 HomoSapiens GN=PYGL PE=1 SV=104	P06737
69	isoform alpha-enolase HomoSapiens GN=ENO1 PE=1 SV=150	P06733
70	gelatinase-associated lipocalin isoform Iso 1 HomoSapiens GN=LCN2 PE=1 SV=62	P80188
71	A4 isoform Iso 1 HomoSapiens GN=ANXA4 PE=1 SV=47	P09525
72	beta chain isoform Iso 1 HomoSapiens GN=TUBB PE=1 SV=161	P07437
73	alpha-1B chain isoform Iso 1 HomoSapiens GN=TUBA1B PE=1 SV=217	P68363
74	isoform Iso 1 HomoSapiens GN=CORO1A PE=1 SV=64	P31146
75	3 anion transport protein isoform Iso 1 HomoSapiens GN=SLC4A1 PE=1 SV=54	P02730
76	protein zeta/delta isoform Iso 1 HomoSapiens GN=YWHAZ PE=1 SV=112	P63104
77	antigen-related cell adhesion molecule 6 isoform Iso 1 HomoSapiens GN=CEACAM6 PE=1 SV=55	P40199
78	synthase subunit alpha, mitochondrial isoform Iso 1 HomoSapiens GN=ATP5A1 PE=1 SV=97	P25705
79	B-like 1 isoform Iso 1 HomoSapiens GN=PLBD1 PE=1 SV=31	Q6P4A8
80	protein 3 isoform Iso 1 HomoSapiens GN=ACTR3 PE=1 SV=63	P61158
81	cell-expressed membrane protein 1 isoform Iso 1 HomoSapiens GN=MCEMP1 PE=1 SV=37	Q8IX19
82	protein Rap-1b isoform Iso 1 HomoSapiens GN=RAP1B PE=1 SV=50	P61224
83	C3 botulinum toxin substrate 2 isoform Iso 1 HomoSapiens GN=RAC2 PE=1 SV=55	P15153
84	protein RhoA isoform Iso 1 HomoSapiens GN=RHOA PE=1 SV=73	P61586
85	type I cytoskeletal 10 isoform Iso 1 HomoSapiens GN=KRT10 PE=1 SV=134	P13645
86	domain-containing protein 1 isoform Iso 1 HomoSapiens GN=EHOD1 PE=1 SV=49	Q9H4M9
87	aldolase A isoform Iso 1 HomoSapiens GN=ALDOA PE=1 SV=164	P04075
88	dehydrogenase [NADP], mitochondrial isoform Iso 1 HomoSapiens GN=IDH2 PE=1 SV=79	P48735
89	kinase 1 isoform Iso 1 HomoSapiens GN=PGK1 PE=1 SV=108	P00558
90	shock cognate 71 kDa protein isoform Iso 1 HomoSapiens GN=HSPA8 PE=1 SV=116	P11142
91	A5 isoform Iso 1 HomoSapiens GN=ANXA5 PE=1 SV=85	P08758
92	protein alpha isoform Iso 1 HomoSapiens GN=ERO1L PE=1 SV=63	Q9GHE7
93	tyrosine-protein phosphatase eta isoform Iso 1 HomoSapiens GN=PTPRJ PE=1 SV=112	Q12913
94	cis-trans isomerase B isoform Iso 1 HomoSapiens GN=PIIB PE=1 SV=79	P23284
95	disulfide-isomerase A6 isoform Iso 1 HomoSapiens GN=PDIA6 PE=1 SV=82	Q15084 (+1)
96	b-245 light chain isoform Iso 1 HomoSapiens GN=CYBA PE=1 SV=72	P13498
97	alpha chain, brain isoform Iso 1 HomoSapiens GN=SPTAN1 PE=1 SV=242	Q13813 (+2)
98	H2A type 1-B/E isoform Iso 1 HomoSapiens GN=HIST1H2AB;HIST1H2AE PE=1 SV=116	P04908 (+2)
99	1-dehydrogenase isoform Short HomoSapiens GN=G6PD PE=1 SV=94	P11413 (+2)
100	light polypeptide 6 isoform Smooth muscle HomoSapiens GN=MYL6 PE=1 SV=54	P60660.2
101	albumin isoform Iso 1 HomoSapiens GN=ALB PE=1 SV=474	P02768
102	isoform Iso 1 HomoSapiens GN=ACTN4 PE=1 SV=114	Q43707
103	isoform Iso 1 HomoSapiens GN=NCSTN PE=1 SV=59	Q92542 (+1)
104	cyclase-associated protein 1 isoform Iso 1 HomoSapiens GN=CAP1 PE=1 SV=103	Q01518
105	membrane glycoprotein 2 isoform LAMP-2B HomoSapiens GN=LAMP2 PE=1 SV=80	P13473.2

106	dehydrogenase, decarboxylating isoform Iso 1 HomoSapiens GN=PGD PE=1 SV=78	P52209
107	3 isoform Iso 1 HomoSapiens GN=PRG3 PE=1 SV=24	Q9Y2Y8
108	dehydrogenase A chain isoform Iso 1 HomoSapiens GN=LDDHA PE=1 SV=109	P00338 (+1)
109	isoform Iso 1 HomoSapiens GN=GNS PE=1 SV=74	P15586
110	nucleotide-binding protein G(I)/G(S)/G(T) subunit beta-2 isoform Iso 1 HomoSapiens GN=GNB2 PE=1 SV=70	P62879
111	5-lipoxygenase isoform Iso 1 HomoSapiens GN=ALOX5 PE=1 SV=57	P09917
112	mitochondrial isoform Mitochondrial HomoSapiens GN=PRDX5 PE=1 SV=100	P30044 (+1)
113	membrane glycoprotein 1 isoform Iso 1 HomoSapiens GN=LAMP1 PE=1 SV=69	P11279
114	omega-hydroxylase 2 isoform Iso 1 HomoSapiens GN=CYP4F3 PE=2 SV=45	Q08477
115	type I cytoskeletal 9 isoform Iso 1 HomoSapiens GN=KRT9 PE=1 SV=194	P35527
116	isoform Iso 1 HomoSapiens GN=CFL1 PE=1 SV=73	P23528
117	receptor isoform Iso 1 HomoSapiens GN=LBR PE=1 SV=59	Q14739
118	N isoform Iso 1 HomoSapiens GN=ANPEP PE=1 SV=187	P15144
119	cyclase 2 isoform Iso 1 HomoSapiens GN=BST1 PE=1 SV=57	Q10588
120	isomerase isoform Iso 1 HomoSapiens GN=GPI PE=1 SV=132	P06744
121	ATPase subunit alpha-1 isoform Long HomoSapiens GN=ATP1A1 PE=1 SV=125	P05023
122	isoform Iso 2 HomoSapiens GN=VCL PE=1 SV=121	P18206 (+1)
123	myosin-Ib isoform Iso 1 HomoSapiens GN=MYO1F PE=1 SV=34	Q00160
124	kDa heat shock protein, mitochondrial isoform Iso 1 HomoSapiens GN=HSPD1 PE=1 SV=102	P10809
125	acid soluble protein 1 isoform Iso 1 HomoSapiens GN=BASP1 PE=1 SV=47	P80723
126	isoform Long HomoSapiens GN=GUSB PE=1 SV=56	P08236
127	neutrophil cytosol factor 1B isoform Iso 1 HomoSapiens GN=NCF1B PE=5 SV=23	A6N172 (+1)
128	S-transferase P isoform Iso 1 HomoSapiens GN=GSTP1 PE=1 SV=81	P09211
129	family homolog 3 isoform Iso 1 HomoSapiens GN=FERMT3 PE=1 SV=54	Q86UX7 (+1)
130	15-lipoxygenase isoform Iso 1 HomoSapiens GN=ALOX15 PE=1 SV=56	P16050
131	division control protein 42 homolog isoform Iso 2 HomoSapiens GN=CDC42 PE=1 SV=71	P06953.2
132	protein 2/3 complex subunit 2 isoform Iso 1 HomoSapiens GN=ARPC2 PE=1 SV=54	Q15144
133	light chain isoform Iso 1 HomoSapiens GN=FTL PE=1 SV=64	P02792
134	synthase, mitochondrial isoform Iso 1 HomoSapiens GN=CS PE=1 SV=83	O75390
135	transporter-like protein 2 isoform Iso 1 HomoSapiens GN=SLC44A2 PE=1 SV=65	Q81WAS (+1)
136	isoform Iso 1 HomoSapiens GN=TALDO1 PE=1 SV=75	P37837
137	factor 3 isoform Iso 1 HomoSapiens GN=ARF3 PE=1 SV=47	P61204 (+1)
138	antimicrobial peptide isoform Iso 1 HomoSapiens GN=CAMP PE=1 SV=41	P49913
139	proton ATPase 116 kDa subunit a isoform 3 isoform Long HomoSapiens GN=TCIRG1 PE=1 SV=50	Q13488
140	A-4 hydrolase isoform Iso 1 HomoSapiens GN=LTA4H PE=1 SV=97	P09960
141	antigen-related cell adhesion molecule 1 isoform Iso 1 HomoSapiens GN=CEACAM1 PE=1 SV=48	P13688 (+3)
142	differentiation marker isoform Iso 1 HomoSapiens GN=MYADM PE=1 SV=37	Q96597
143	antigen isoform Iso 1 HomoSapiens GN=CD63 PE=1 SV=63	P08962
144	antigen isoform Iso 1 HomoSapiens GN=CD177 PE=1 SV=19	Q8N6Q3
145	antigen isoform Iso 1 HomoSapiens GN=CD97 PE=1 SV=121	P48960 (+2)
146	GDP-dissociation inhibitor 2 isoform Iso 1 HomoSapiens GN=ARHGDI2 PE=1 SV=44	P52566
147	type II cytoskeletal 2 epidermal isoform Iso 1 HomoSapiens GN=KRT7 PE=1 SV=215	P35908
148	collagenase isoform Iso 1 HomoSapiens GN=MMP8 PE=1 SV=55	P22894
149	peroxide reductase, mitochondrial isoform Iso 1 HomoSapiens GN=PRDX3 PE=1 SV=70	P30048
150	protein 1 isoform Iso 1 HomoSapiens GN=TOR1AIP1 PE=1 SV=44	Q5JTV8
151	2 subunit beta isoform Iso 1 HomoSapiens GN=PRKCSH PE=1 SV=64	P14314
152	cytosol factor 4 isoform Iso 1 HomoSapiens GN=NCF4 PE=1 SV=38	Q15080
153	oxidoreductase, mitochondrial isoform Iso 1 HomoSapiens GN=SQRDL PE=1 SV=68	Q9Y6N5
154	adhesion molecule 3 isoform Iso 1 HomoSapiens GN=ICAM3 PE=1 SV=132	P32942
155	vesicle membrane protein VAT-1 homolog isoform Iso 1 HomoSapiens GN=VAT1 PE=1 SV=57	Q99536
156	polypeptide isoform Sap-mu-0 HomoSapiens GN=PSAP PE=1 SV=68	P07602 (+2)
157	GTP-binding protein RhoG isoform Iso 1 HomoSapiens GN=RHOGE PE=1 SV=52	P84095
158	protein subunit alpha-1 isoform Iso 1 HomoSapiens GN=CAPZ1 PE=1 SV=49	P52907
159	isoform Iso 1 HomoSapiens GN=PRDX2 PE=1 SV=96	P32119
160	5-lipoxygenase-activating protein isoform Iso 1 HomoSapiens GN=ALOX5AP PE=1 SV=39	P20292
161	alpha-3 chain isoform Iso 2 HomoSapiens GN=TPM3 PE=1 SV=84	P06753.2
162	cell nuclear differentiation antigen isoform Iso 1 HomoSapiens GN=MNDA PE=1 SV=32	P41218
163	surface antigen CD47 isoform OA3-323 HomoSapiens GN=CD47 PE=1 SV=51	Q08722 (+3)
164	isoform Iso 1 HomoSapiens GN=OLFM4 PE=1 SV=32	Q6UX06
165	cis-trans isomerase A isoform Iso 1 HomoSapiens GN=PP1A PE=1 SV=92	P62937
166	shock protein HSP 90-alpha isoform Iso 1 HomoSapiens GN=HSP90AA1 PE=1 SV=192	P07900 (+1)
167	glycosyltransferase subunit 1 isoform Iso 1 HomoSapiens GN=RPN1 PE=1 SV=90	P04843
168	FAM49B isoform Iso 1 HomoSapiens GN=FAM49B PE=1 SV=57	Q9NUO9
169	dehydrogenase family 3 member B1 isoform Iso 1 HomoSapiens GN=ALDH3B1 PE=1 SV=45	P43353
170	isoform Iso 1 HomoSapiens GN=HK3 PE=1 SV=44	P52790
171	deaminase type-4 isoform Iso 1 HomoSapiens GN=PAD1A PE=1 SV=62	Q9UM07
172	translocase 2 isoform Iso 1 HomoSapiens GN=SLC25A5 PE=1 SV=109	P05141
173	S100-A12 isoform Iso 1 HomoSapiens GN=S100A12 PE=1 SV=43	P80511
174	cycle control protein 50A isoform Iso 1 HomoSapiens GN=TMEM30A PE=1 SV=50	Q9NV96
175	malic enzyme, mitochondrial isoform Iso 1 HomoSapiens GN=ME2 PE=1 SV=76	P23368
176	diaphanous homolog 1 isoform Iso 1 HomoSapiens GN=DIAPH1 PE=1 SV=94	O60610 (+1)
177	heavy chain 1 isoform Iso 1 HomoSapiens GN=CLTC PE=1 SV=183	Q00610 (+1)
178	receptor isoform Iso 1 HomoSapiens GN=FPRI PE=1 SV=26	P21462
179	protein beta/alpha isoform Long HomoSapiens GN=YWHAB PE=1 SV=100	P31946 (+1)
180	anaphylatoxin chemotactic receptor isoform Iso 1 HomoSapiens GN=CSAR1 PE=1 SV=65	P21730
181	dehydrogenase, mitochondrial isoform Iso 1 HomoSapiens GN=MDH2 PE=1 SV=104	P40926
182	type II cuticular Hb2 isoform Iso 1 HomoSapiens GN=KRT82 PE=1 SV=39	Q9NSB4
183	protein subunit beta isoform Iso 1 HomoSapiens GN=CAPZB PE=1 SV=64	P47756 (+1)
184	glycosyltransferase subunit 2 isoform Iso 1 HomoSapiens GN=RPN2 PE=1 SV=86	P04844 (+1)
185	alpha-mannosidase isoform Iso 1 HomoSapiens GN=MAN2B1 PE=1 SV=78	O00754
186	non-inflammatory molecule 2 isoform Iso 1 HomoSapiens GN=VNN2 PE=1 SV=44	Q95498
187	regulatory light chain 12B isoform Iso 1 HomoSapiens GN=MYL12B PE=1 SV=46	O14950 (+1)
188	reticulum resident protein 29 isoform Iso 1 HomoSapiens GN=ERP29 PE=1 SV=55	P30040
189	endoplasmic reticulum ATPase isoform Iso 1 HomoSapiens GN=VCP PE=1 SV=138	P55072
190	isoform Iso 1 HomoSapiens GN=CALM1;CALM2;CALM3 PE=1 SV=126	P62158
191	kinase HCK isoform Iso 1 HomoSapiens GN=HCK PE=1 SV=76	P08631 (+3)
192	nucleotide-binding protein G(s) subunit alpha isoforms XLas isoform XLas-1 HomoSapiens GN=GNAS PE=1 SV=65	Q51WF2 (+4)
193	ceramidase isoform Iso 1 HomoSapiens GN=ASAH1 PE=1 SV=80	Q13510 (+1)
194	1 isoform Iso 1 HomoSapiens GN=TPP1 PE=1 SV=70	O14773 (+1)
195	GDP dissociation inhibitor beta isoform Iso 1 HomoSapiens GN=GDID2 PE=1 SV=84	P50395
196	protein Rab-8 isoform Iso 1 HomoSapiens GN=RALB PE=1 SV=51	P11234
197	S100-A11 isoform Iso 1 HomoSapiens GN=S100A11 PE=1 SV=33	P31949
198	peptide receptor 2 isoform Iso 1 HomoSapiens GN=PPR2 PE=2 SV=27	P25090
199	plant pathogenesis-related protein 1 isoform Iso 1 HomoSapiens GN=GLIPR2 PE=1 SV=40	Q9H4G4
200	alpha Fc receptor isoform A.1 HomoSapiens GN=FCAR PE=1 SV=44	P24071
201	protein 1 isoform Iso 1 HomoSapiens GN=FMNL1 PE=1 SV=51	Q95466 (+1)
202	myosin-Ig isoform Iso 1 HomoSapiens GN=MYO1G PE=1 SV=87	B01172
203	protein 2/3 complex subunit 1B isoform Iso 1 HomoSapiens GN=ARPC1B PE=1 SV=57	O15143
204	disulfide-isomerase A4 isoform Iso 1 HomoSapiens GN=PDIA4 PE=1 SV=97	P13667
205	alpha chain, erythrocyte isoform Iso 1 HomoSapiens GN=SPTA1 PE=1 SV=61	P02549 (+1)
206	protein 2 isoform Iso 1 HomoSapiens GN=ACTR2 PE=1 SV=61	P61160
207	XRP2 isoform Iso 1 HomoSapiens GN=RP2 PE=1 SV=60	O75695
208	isoform Iso 1 HomoSapiens GN=MME PE=1 SV=65	P08473
209	protein Rab-27A isoform Long HomoSapiens GN=RAB27A PE=1 SV=66	P51159
210	phosphoribosyltransferase isoform Iso 1 HomoSapiens GN=NAMPT PE=1 SV=59	P43490
211	phospholipid-transporting ATPase IA isoform Iso 3 HomoSapiens GN=ATP8A1 PE=1 SV=43	Q9Y2Q0.3
212	mutase 1 isoform Iso 1 HomoSapiens GN=PGAM1 PE=1 SV=78	P18669

213	nucleotide-binding protein G(k) subunit alpha isoform Iso 1 HomoSapiens GN=GNAI3 PE=1 SV=76	P08754
214	hydrolase isoform Iso 1 HomoSapiens GN=GGH PE=1 SV=62	Q92820
215	ligase 1 isoform Iso 1 HomoSapiens GN=ACSL1 PE=1 SV=70	P33121
216	enzyme subunit alpha, mitochondrial isoform Iso 1 HomoSapiens GN=HADHA PE=1 SV=96	P40939
217	anion-selective channel protein 1 isoform Iso 1 HomoSapiens GN=VDAC1 PE=1 SV=83	P21796
218	intracellular channel protein 1 isoform Iso 1 HomoSapiens GN=CLIC1 PE=1 SV=136	Q00299
219	Ras-related protein Rab-1C isoform Iso 1 HomoSapiens GN=RAB1C PE=5 SV=35	Q92928 (+1)
220	dismutase [Mn], mitochondrial isoform Iso 1 HomoSapiens GN=SOD2 PE=1 SV=151	P04179
221	beta chain, brain isoform Long HomoSapiens GN=SPTBN1 PE=1 SV=206	Q01082 (+2)
222	repeat-containing protein 1 isoform Iso 1 HomoSapiens GN=WDR1 PE=1 SV=66	O75083
223	reticulum calcium ATPase 3 isoform SERCA3B HomoSapiens GN=ATP2A3 PE=1 SV=65	Q93084 (+6)
224	isoform Iso 1 HomoSapiens GN=SERPINA3 PE=1 SV=207	P10111
225	H3.2 isoform Iso 1 HomoSapiens GN=HIST2H3A;HIST2H3C;HIST2H3D PE=1 SV=106	Q17D13
226	protein Rab-7a isoform Iso 1 HomoSapiens GN=RAB7A PE=1 SV=69	P51149
227	protein 2/3 complex subunit 3 isoform Iso 1 HomoSapiens GN=ARPC3 PE=1 SV=51	O15145
228	isoform Iso 1 HomoSapiens GN=CNN2 PE=1 SV=44	Q99439
229	H2B type 1-J isoform Iso 1 HomoSapiens GN=HIST1H2BJ PE=1 SV=69	P06899 (+3)
230	protein isoform Iso 1 HomoSapiens GN=CAPG PE=1 SV=47	P40121
231	domain-containing protein 2 isoform Iso 1 HomoSapiens GN=SUN2 PE=1 SV=51	Q9UH99
232	dehydrogenase, mitochondrial isoform Iso 1 HomoSapiens GN=DLD PE=1 SV=69	P09622
233	unc-13 homolog D isoform Iso 1 HomoSapiens GN=UNC13D PE=1 SV=43	Q70199 (+1)
234	17-beta-dehydrogenase 11 isoform Iso 1 HomoSapiens GN=HSD17B11 PE=1 SV=62	Q8NBQ5
235	long-chain specific acyl-CoA dehydrogenase, mitochondrial isoform Iso 1 HomoSapiens GN=ACADVL PE=1 SV=73	P49748 (+1)
236	isomerase isoform Iso 2 HomoSapiens GN=TP1 PE=1 SV=124	P60174 (+1)
237	isoform Iso 3 HomoSapiens GN=RTN3 PE=1 SV=47	O95197.3
238	module-containing mucin-like hormone receptor-like 3 isoform Iso 1 HomoSapiens GN=EMR3 PE=1 SV=72	Q98Y15 (+1)
239	factor Tu, mitochondrial isoform Iso 1 HomoSapiens GN=TUFM PE=1 SV=73	P49411
240	cytosol factor 2 isoform Iso 1 HomoSapiens GN=NCF2 PE=1 SV=44	P19878
241	proton ATPase catalytic subunit A isoform Iso 1 HomoSapiens GN=ATP6V1A PE=1 SV=95	P38606
242	isoform Iso 1 HomoSapiens GN=SDCBP PE=1 SV=61	O00560 (+2)
243	protein 2/3 complex subunit 5 isoform Iso 1 HomoSapiens GN=ARPC5 PE=1 SV=39	O15511
244	D isoform Iso 1 HomoSapiens GN=CTSD PE=1 SV=84	P07339
245	G-protein coupled receptor 97 isoform Iso 1 HomoSapiens GN=GPR97 PE=1 SV=39	Q86Y34
246	protein sorting-associated protein 35 isoform Iso 1 HomoSapiens GN=VPS35 PE=1 SV=64	Q96QK1
247	protein 1 isoform Iso 2 HomoSapiens GN=SYPL1 PE=1 SV=36	Q15653.2
248	proton ATPase subunit d 1 isoform Iso 1 HomoSapiens GN=ATP6V0D1 PE=1 SV=60	P61421
249	isoform Iso 1 HomoSapiens GN=CPNE2 PE=1 SV=26	Q96FN4
250	factor 1-alpha 1 isoform Iso 1 HomoSapiens GN=EEF1A1 PE=1 SV=87	P68104 (+1)
251	b5 reductase 3 isoform Iso 1 HomoSapiens GN=CYB5R3 PE=1 SV=89	P00387 (+2)
252	facilitator superfamily domain-containing protein 10 isoform Iso 1 HomoSapiens GN=MFS010 PE=1 SV=27	Q14728
253	factor-like protein 8B isoform Iso 1 HomoSapiens GN=ARL8B PE=1 SV=44	Q9NVJ2
254	glucosyltransferase 1 isoform Iso 1 HomoSapiens GN=UGGT1 PE=1 SV=81	Q9NYU2 (+1)
255	STEAP4 isoform Iso 1 HomoSapiens GN=STEAP4 PE=1 SV=35	Q687X5
256	isoform Iso 1 HomoSapiens GN=VNN1 PE=1 SV=58	O95497
257	anion-selective channel protein 2 isoform Iso 1 HomoSapiens GN=VDAC2 PE=1 SV=73	P45880 (+2)
258	kinase Fgr isoform Iso 1 HomoSapiens GN=FGR PE=1 SV=63	P09769
259	phosphoprotein isoform Iso 1 HomoSapiens GN=VASP PE=1 SV=62	P50552
260	enzyme subunit beta, mitochondrial isoform Iso 1 HomoSapiens GN=HADHB PE=1 SV=85	P55084
261	isoform Iso 1 HomoSapiens GN=GALNS PE=1 SV=52	P34059
262	class I histocompatibility antigen, A-3 alpha chain isoform Iso 1 HomoSapiens GN=HLA-A PE=1 SV=61	P04439
263	isoform Iso 1 HomoSapiens GN=CPNE1 PE=1 SV=46	Q99829
264	isoform Iso 2 HomoSapiens GN=RTN4 PE=1 SV=69	Q9NQC3.2
265	hydrogen channel 1 isoform Iso 1 HomoSapiens GN=HVCN1 PE=1 SV=35	Q96096
266	component 1 Q subcomponent-binding protein, mitochondrial isoform Iso 1 HomoSapiens GN=C1QBIP PE=1 SV=49	Q07021
267	dehydrogenase B chain isoform Iso 1 HomoSapiens GN=LDBH PE=1 SV=104	P07195
268	protein Rab-11B isoform Iso 1 HomoSapiens GN=RAB11B PE=1 SV=40	Q15907
269	transporter 4 isoform Iso 1 HomoSapiens GN=SLC16A3 PE=1 SV=55	Q15427
270	subunit alpha isoform Iso 1 HomoSapiens GN=HEXA PE=1 SV=89	P06865
271	deiminase type-2 isoform Iso 1 HomoSapiens GN=PADI2 PE=1 SV=50	Q9Y2J8
272	S100-A4 isoform Iso 1 HomoSapiens GN=S100A4 PE=1 SV=43	P26447
273	cell death 6-interacting protein isoform Iso 1 HomoSapiens GN=PDCC6IP PE=1 SV=100	Q8WUM4
274	isoform Iso 1 HomoSapiens GN=PHB2 PE=1 SV=61	Q99623
275	kinase C delta type isoform Iso 1 HomoSapiens GN=PRKCD PE=1 SV=76	O05655
276	FMR1-interacting protein 2 isoform Iso 1 HomoSapiens GN=CYFIP2 PE=1 SV=103	Q96F07 (+1)
277	anion-selective channel protein 3 isoform Iso 1 HomoSapiens GN=VDAC3 PE=1 SV=62	Q9V277 (+1)
278	type I cuticular Ha1 isoform Iso 1 HomoSapiens GN=KRT31 PE=1 SV=44	Q15323
279	glycosyltransferase 48 kDa subunit isoform Iso 1 HomoSapiens GN=DDOST PE=1 SV=71	P39656
280	beta chain, erythrocyte isoform Iso 1 HomoSapiens GN=SPTB PE=1 SV=72	P11277 (+2)
281	proton ATPase subunit E 1 isoform Iso 1 HomoSapiens GN=ATP6V1E1 PE=1 SV=56	P36543 (+1)
282	modifier-activating enzyme 1 isoform Iso 1 HomoSapiens GN=UBA1 PE=1 SV=141	Q22314
283	GTPase-activating-like protein IQGAP2 isoform Iso 1 HomoSapiens GN=IQGAP2 PE=1 SV=67	Q13576
284	A7 isoform Iso 1 HomoSapiens GN=ANXA7 PE=1 SV=48	P20073 (+1)
285	SDR family member 7 isoform Iso 1 HomoSapiens GN=DHR57 PE=1 SV=44	Q9Y394 (+1)
286	uniporter protein, mitochondrial isoform Iso 1 HomoSapiens GN=MCU PE=1 SV=49	Q8NE86 (+1)
287	protein Rab-31 isoform Iso 1 HomoSapiens GN=RAB31 PE=1 SV=38	Q13636
288	phosphatase non-receptor type substrate 1 isoform Iso 1 HomoSapiens GN=SHRPA PE=1 SV=70	P78324 (+2)
289	synaptotagmin-1 isoform Iso 1 HomoSapiens GN=ESYT1 PE=1 SV=110	Q9BSJ8 (+1)
290	carrier family 15 member 4 isoform Iso 1 HomoSapiens GN=SLC15A4 PE=1 SV=45	Q8N697
291	isoform Iso 1 HomoSapiens GN=PLEK PE=1 SV=43	P08567
292	nucleoside phosphorylase isoform Iso 1 HomoSapiens GN=PNP PE=1 SV=83	P00491
293	protein Rab-5C isoform Iso 1 HomoSapiens GN=RAB5C PE=1 SV=65	P51148
294	protein Rab-3D isoform Iso 1 HomoSapiens GN=RAB3D PE=1 SV=45	O95716
295	type II cuticular Hb6 isoform Iso 1 HomoSapiens GN=KRT86 PE=1 SV=67	Q43790
296	isoform Iso 1 HomoSapiens GN=NPTN PE=1 SV=60	Q9Y639 (+4)
297	phosphatase non-receptor type 6 isoform Iso 1 HomoSapiens GN=PTPN6 PE=1 SV=61	P29350 (+1)
298	isoform Iso 1 HomoSapiens GN=BSG PE=1 SV=84	P35613 (+1)
299	nucleotide-binding protein G(I)/G(S)/G(T) subunit beta-1 isoform Iso 1 HomoSapiens GN=GNB1 PE=1 SV=84	P62873
300	factor 1 isoform Iso 1 HomoSapiens GN=OSTF1 PE=1 SV=29	Q92882
301	phosphatase PP1-alpha catalytic subunit isoform Iso 1 HomoSapiens GN=PPP1CA PE=1 SV=74	P62136
302	S100-P isoform Iso 1 HomoSapiens GN=S100P PE=1 SV=32	P25815
303	type I cuticular Ha2 isoform Iso 1 HomoSapiens GN=KRT32 PE=1 SV=32	Q14532
304	protein, mitochondrial isoform Iso 1 HomoSapiens GN=HSPA9 PE=1 SV=92	P38646
305	isoform Iso 1 HomoSapiens GN=ERLIN2 PE=1 SV=53	O94905
306	H2A.Z isoform Iso 1 HomoSapiens GN=H2AFZ PE=1 SV=50	POC055 (+2)
307	isoform Iso 1 HomoSapiens GN=LGALS3 PE=1 SV=55	P17931
308	isoform Iso 1 HomoSapiens GN=PHB PE=1 SV=63	P35232
309	pyrophosphatase/phosphodiesterase family member 4 isoform Iso 1 HomoSapiens GN=ENPP4 PE=1 SV=35	Q9Y6X5
310	isoform Iso 1 HomoSapiens GN=LNMN1 PE=1 SV=100	P20700
311	isoform Iso 1 HomoSapiens GN=PRDX6 PE=1 SV=91	P30041
312	b-c1 complex subunit 2, mitochondrial isoform Iso 1 HomoSapiens GN=UQCRC2 PE=1 SV=63	P22695
313	protein Rap-2B isoform Iso 1 HomoSapiens GN=RAP2B PE=1 SV=37	P61225
314	chemokine receptor type 2 isoform Iso 1 HomoSapiens GN=CXCR2 PE=1 SV=33	P25025
315	S isoform Iso 1 HomoSapiens GN=CTSS PE=1 SV=59	P25774 (+1)
316	kinase isoform Iso 1 HomoSapiens GN=PDXX PE=1 SV=66	O00764
317	protein Rap-1A isoform Iso 1 HomoSapiens GN=RAP1A PE=1 SV=56	P62834
318	protein 1 isoform Iso 1 HomoSapiens GN=LSP1 PE=1 SV=40	P33241
319	scramblase 1 isoform Iso 1 HomoSapiens GN=PLSCR1 PE=1 SV=31	O15162

320 proton ATPase subunit S1 isoform Iso 1 |HomoSapiens| GN=ATP6AP1 PE=1 SV=56 Q15904
321 2-oxoglutarate/malate carrier protein isoform Iso 1 |HomoSapiens| GN=SLC25A11 PE=1 SV=62 Q02978
322 isoform Iso 1 |HomoSapiens| GN=TAGLN2 PE=1 SV=64 P37802
323 subunit beta-1 isoform Iso 1 |HomoSapiens| GN=KPNB1 PE=1 SV=69 Q14974
324 nucleotide-binding protein G(a) subunit alpha isoform Iso 1 |HomoSapiens| GN=GNAQ PE=1 SV=57 P50148
325 locus protein 4 isoform Iso 1 |HomoSapiens| GN=SURF4 PE=1 SV=27 Q15260 (+1)
326 integral-membrane protein VIP36 isoform Iso 1 |HomoSapiens| GN=LTMAN2 PE=1 SV=59 Q12907
327 nuclear ribonucleoprotein K isoform Iso 3 |HomoSapiens| GN=HNRNP K PE=1 SV=84 P61978.3 (+2)
328 protein Rab-8B isoform Iso 1 |HomoSapiens| GN=RAB8B PE=1 SV=35 Q92930
329 speck-like protein containing a CARD isoform Iso 1 |HomoSapiens| GN=PYCARD PE=1 SV=37 Q9ULZ3 (+1)
330 emp24 domain-containing protein 9 isoform Iso 1 |HomoSapiens| GN=TMED9 PE=1 SV=52 Q9BVK6
331 domain-containing protein D2 isoform Iso 1 |HomoSapiens| GN=EFHD2 PE=1 SV=41 Q96C19
332 GTPase-activating protein 1 isoform Iso 1 |HomoSapiens| GN=ARHGAP1 PE=1 SV=55 Q07960
333 c oxidase subunit 2 isoform Iso 1 |HomoSapiens| GN=MT-CO2 PE=1 SV=50 P00403
334 isoform Iso 1 |HomoSapiens| GN=GLRX PE=1 SV=46 P35754
335 kDa heat shock protein, mitochondrial isoform Iso 1 |HomoSapiens| GN=HSPA1 PE=1 SV=49 P61604
336 isoform Iso 1 |HomoSapiens| GN=EZR PE=1 SV=99 P15311
337 1A1 isoform Iso 1 |HomoSapiens| GN=SULT1A1 PE=1 SV=92 P50225 (+1)
338 acyltransferase 2 isoform Iso 1 |HomoSapiens| GN=LPCAT2 PE=1 SV=56 Q7LSN7
339 homolog subfamily C member 13 isoform Iso 1 |HomoSapiens| GN=DNAC13 PE=1 SV=88 Q75165
340 class I histocompatibility antigen, B-7 alpha chain isoform Iso 1 |HomoSapiens| GN=HLA-B PE=1 SV=68 P01889
341 nucleotide-binding protein G(I)/G(S)/G(O) subunit gamma-2 isoform Iso 1 |HomoSapiens| GN=GN2 PE=1 SV=51 P59768
342 integrator 2 isoform Iso 1 |HomoSapiens| GN=BIN2 PE=1 SV=30 Q9UBW5
343 secretory protein E1 isoform Iso 1 |HomoSapiens| GN=NPC2 PE=1 SV=60 P61916
344 synthase subunit d, mitochondrial isoform Iso 1 |HomoSapiens| GN=ATP5H PE=1 SV=40 Q75947 (+1)
345 homolog subfamily C member 5 isoform Iso 1 |HomoSapiens| GN=DNAC5 PE=1 SV=55 Q9H324 (+1)
346 T2 isoform Iso 1 |HomoSapiens| GN=RNASET2 PE=1 SV=47 O00584
347 isoform Iso 1 |HomoSapiens| GN=TSPAN14 PE=1 SV=48 Q8NG11 (+1)
348 isoform Iso 1 |HomoSapiens| GN=CHIT1 PE=1 SV=60 Q13231 (+2)
349 activator complex subunit 1 isoform Iso 1 |HomoSapiens| GN=PSME1 PE=1 SV=48 Q06323
350 antigen isoform Iso 1 |HomoSapiens| GN=CD44 PE=1 SV=70 P16070 (+15)
351 Niban isoform Iso 1 |HomoSapiens| GN=FAM129A PE=1 SV=39 Q9BZ08
352 uridylyltransferase isoform Iso 1 |HomoSapiens| GN=UGP2 PE=1 SV=93 Q16851 (+1)
353 isoform Iso 1 |HomoSapiens| GN=FCN1 PE=1 SV=39 Q00602
354 alpha-4A chain isoform Iso 1 |HomoSapiens| GN=TUBA4A PE=1 SV=138 P68366
355 acyl-coenzyme A oxidase 1 isoform Iso 1 |HomoSapiens| GN=ACOX1 PE=1 SV=66 Q15067 (+1)
356 vault protein isoform Iso 1 |HomoSapiens| GN=MVP PE=1 SV=61 Q14764
357 17-beta-dehydrogenase 12 isoform Iso 1 |HomoSapiens| GN=HSD17B12 PE=1 SV=67 Q53G00
358 synthase subunit O, mitochondrial isoform Iso 1 |HomoSapiens| GN=ATP5O PE=1 SV=59 P48047
359 protein 2 isoform Iso 1 |HomoSapiens| GN=STXB2 PE=1 SV=79 Q15833 (+1)
360 dehydrogenase, mitochondrial isoform Iso 1 |HomoSapiens| GN=GPD2 PE=1 SV=86 P43304 (+1)
361 and metalloproteinase domain-containing protein 10 isoform Iso 1 |HomoSapiens| GN=ADAM10 PE=1 SV=81 Q14672
362 B receptor isoform Iso 1 |HomoSapiens| GN=APOBR PE=1 SV=101 Q0V083 (+1)
363 vav isoform Iso 1 |HomoSapiens| GN=VAV1 PE=1 SV=48 P15498
364 glycosyltransferase subunit STT3B isoform Iso 1 |HomoSapiens| GN=STT3B PE=1 SV=70 Q8TCJ2
365 protein 2/3 complex subunit 4 isoform Iso 1 |HomoSapiens| GN=ARPC4 PE=1 SV=32 P59998
366 emp24 domain-containing protein 10 isoform Iso 1 |HomoSapiens| GN=TMED10 PE=1 SV=58 P49755
367 protein eta isoform Iso 1 |HomoSapiens| GN=YWHAE PE=1 SV=75 Q04917
368 heavy chain isoform Iso 1 |HomoSapiens| GN=FTH1 PE=1 SV=69 P02794
369 reticulum aminopeptidase 1 isoform Iso 1 |HomoSapiens| GN=ERAP1 PE=1 SV=69 Q9NZ08 (+1)
370 histone macro-H2A.1 isoform Iso 2 |HomoSapiens| GN=H2AFY PE=1 SV=69 Q75367 (+2)
371 mitochondrial carrier protein SCA1 isoform Iso 1 |HomoSapiens| GN=SLC25A24 PE=1 SV=53 Q6NUK1
372 Z isoform Iso 1 |HomoSapiens| GN=CTS2 PE=1 SV=57 Q9UBR2
373 protein 43 isoform Iso 1 |HomoSapiens| GN=TMEM43 PE=1 SV=59 Q9BTV4
374 of cytokinesis protein 2 isoform Iso 1 |HomoSapiens| GN=DOCK2 PE=1 SV=42 Q92608
375 isoform Iso 1 |HomoSapiens| GN=TXN PE=1 SV=58 P10599
376 recognition protein 1 isoform Iso 1 |HomoSapiens| GN=PGLYRP1 PE=1 SV=34 Q75594
377 lectin domain family 5 member A isoform Iso 1 |HomoSapiens| GN=CLECSA PE=1 SV=52 Q9NY25
378 diphosphate kinase B isoform Iso 3 |HomoSapiens| GN=NME2 PE=1 SV=103 P22392.2
379 acyltransferase 7 isoform Iso 1 |HomoSapiens| GN=MBOAT7 PE=1 SV=36 Q96N66
380 synthase subunit f, mitochondrial isoform Iso 1 |HomoSapiens| GN=ATP5I2 PE=1 SV=31 P56134 (+1)
381 anhydrase 4 isoform Iso 1 |HomoSapiens| GN=CA4 PE=1 SV=58 P22748
382 subunit delta isoform Iso 1 |HomoSapiens| GN=HBD PE=1 SV=88 P02042
383 S-transferase omega-1 isoform Iso 1 |HomoSapiens| GN=GSTO1 PE=1 SV=72 P78417
384 protective protein isoform Iso 1 |HomoSapiens| GN=CTSA PE=1 SV=71 P10619
385 transmembrane protein 4 isoform Iso 1 |HomoSapiens| GN=TMX4 PE=1 SV=42 Q9H1E5
386 c oxidase subunit 5B, mitochondrial isoform Iso 1 |HomoSapiens| GN=COX5B PE=1 SV=36 P10606
387 dehydrogenase type-2 isoform Iso 1 |HomoSapiens| GN=HSD17B10 PE=1 SV=76 Q99714
388 peptidase 1 isoform Iso 1 |HomoSapiens| GN=CTSC PE=1 SV=106 P53634
389 phosphoesterase domain-containing protein 1 isoform Iso 1 |HomoSapiens| GN=CPED1 PE=1 SV=62 Q98R8F
390 kinase 2, mitochondrial isoform Iso 1 |HomoSapiens| GN=AK2 PE=1 SV=70 P54819 (+2)
391 peptidase complex catalytic subunit SEC11A isoform Iso 1 |HomoSapiens| GN=SEC11A PE=1 SV=41 P67812
392 carrier organic anion transporter family member 4C1 isoform Iso 1 |HomoSapiens| GN=SLCO4C1 PE=1 SV=35 Q6ZQ07
393 homolog subfamily B member 11 isoform Iso 1 |HomoSapiens| GN=DNAJB11 PE=1 SV=54 Q9UB54
394 protein epsilon isoform Iso 1 |HomoSapiens| GN=YWHAH PE=1 SV=102 P62258 (+1)
395 domain death agonist isoform Iso 1 |HomoSapiens| GN=BID PE=1 SV=61 P59957 (+2)
396 reticulum resident protein 44 isoform Iso 1 |HomoSapiens| GN=ERP44 PE=1 SV=37 Q9BS26
397 factor 4 isoform Iso 1 |HomoSapiens| GN=PF4 PE=1 SV=37 P02776
398 KRas isoform 2B |HomoSapiens| GN=KRAS PE=1 SV=77 P01116.2
399 dehydrogenase, mitochondrial isoform Iso 1 |HomoSapiens| GN=ALDH4A1 PE=1 SV=76 P30038
400 maturation factor gamma isoform Iso 1 |HomoSapiens| GN=GMFG PE=1 SV=39 Q06234
401 with coiled-coil, ANK repeat and PH domain-containing protein 1 isoform Iso 1 |HomoSapiens| GN=ACAP1 PE=1 SV=32 Q15027
402 histocompatibility protein HA-1 isoform Iso 1 |HomoSapiens| GN=HIMHA1 PE=1 SV=40 Q92619
403 protein Rab-14 isoform Iso 1 |HomoSapiens| GN=RAB14 PE=1 SV=56 P61106
404 catalytic subunit isoform Iso 1 |HomoSapiens| GN=CAPN1 PE=1 SV=79 P07384
405 endoplasmic bifunctional protein isoform Iso 1 |HomoSapiens| GN=H6PD PE=1 SV=63 Q95479
406 phosphatase 2A 65 kDa regulatory subunit A alpha isoform Iso 1 |HomoSapiens| GN=PPP2R1A PE=1 SV=84 P30153
407 S-transferase kappa 1 isoform Iso 1 |HomoSapiens| GN=GSTK1 PE=1 SV=73 Q9Y2Q3
408 H1.3 isoform Iso 1 |HomoSapiens| GN=HIST1H1D PE=1 SV=62 P16402 (+2)
409 c1, heme protein, mitochondrial isoform Iso 1 |HomoSapiens| GN=CYC1 PE=1 SV=72 P08574
410 kinase 10 isoform Iso 1 |HomoSapiens| GN=STK10 PE=1 SV=60 Q94804
411 proton ATPase 116 kDa subunit a isoform Iso 2 |HomoSapiens| GN=ATP6V0A1 PE=1 SV=67 Q93050 (+1)
412 up-regulated protein 1 isoform Iso 1 |HomoSapiens| GN=HYOU1 PE=1 SV=89 Q9Y411
413 immunoglobulin-like receptor subfamily B member 2 isoform Iso 1 |HomoSapiens| GN=LILRB2 PE=1 SV=63 Q8N423 (+1)
414 complex subunit beta-1 isoform A |HomoSapiens| GN=AP1B1 PE=1 SV=76 Q10567 (+2)
415 protein Rab-21 isoform Iso 1 |HomoSapiens| GN=RAB21 PE=1 SV=61 Q9UL25
416 acetyltransferase, mitochondrial isoform Iso 1 |HomoSapiens| GN=ACAT1 PE=1 SV=78 P24752
417 b-c1 complex subunit 1, mitochondrial isoform Iso 1 |HomoSapiens| GN=UQCRC1 PE=1 SV=63 P31930
418 H1.5 isoform Iso 1 |HomoSapiens| GN=HIST1H1B PE=1 SV=59 P16401
419 GTPase-activating protein 9 isoform Iso 1 |HomoSapiens| GN=ARHGAP9 PE=1 SV=30 Q98RR9 (+1)
420 glycoprotein isoform Iso 1 |HomoSapiens| GN=CD59 PE=1 SV=79 P13987
421 beta-4B chain isoform Iso 1 |HomoSapiens| GN=TUBB4B PE=1 SV=145 P68371
422 isoform Iso 1 |HomoSapiens| GN=ARG1 PE=1 SV=67 P05089 (+1)
423 protein subunit alpha isoform Iso 1 |HomoSapiens| GN=SSR1 PE=1 SV=49 P43307
424 c oxidase subunit 7A2, mitochondrial isoform Iso 1 |HomoSapiens| GN=COX7A2 PE=1 SV=26 P14406
425 expression-enhancing protein 5 isoform Iso 1 |HomoSapiens| GN=REPS5 PE=1 SV=40 Q00765
426 type II cuticular Hb5 isoform Iso 1 |HomoSapiens| GN=KRT85 PE=1 SV=75 P78386

427 initiation factor 4A-I isoform Iso 1 |HomoSapiens| GN=EIF4A1 PE=1 SV=95 P60842

428 protein kinase 14 isoform CSBP2 |HomoSapiens| GN=MAPK14 PE=1 SV=73 Q16539 (+1)

429 protein theta isoform Iso 1 |HomoSapiens| GN=YWHAQ PE=1 SV=91 P27348

430 receptor isoform Iso 1 |HomoSapiens| GN=SORL1 PE=1 SV=58 Q92673

431 synthase subunit b, mitochondrial isoform Iso 1 |HomoSapiens| GN=ATP5F1 PE=1 SV=46 P24539

432 B isoform Iso 1 |HomoSapiens| GN=ARSB PE=1 SV=57 P15848 (+1)

433 b5 type B isoform Iso 1 |HomoSapiens| GN=CYB5B PE=1 SV=47 Q43169

434 thiolase, peroxisomal isoform Iso 1 |HomoSapiens| GN=ACAA1 PE=1 SV=74 P09110

435 synthetase isozyme 2 isoform Iso 1 |HomoSapiens| GN=ADSS PE=1 SV=72 P30520

436 protein 1-like isoform Iso 1 |HomoSapiens| GN=NCKAP1L PE=1 SV=27 P55160

437 and cell motility protein 1 isoform Iso 1 |HomoSapiens| GN=ELMO1 PE=1 SV=40 Q92556

438 isoform Iso 1 |HomoSapiens| GN=HP PE=1 SV=200 P00738

439 domain-binding glutamic acid-rich-like protein isoform Iso 1 |HomoSapiens| GN=SH3BGLR PE=1 SV=30 O75368

440 protein isoform Iso 1 |HomoSapiens| GN=TSPO PE=1 SV=39 P30536

441 reductase, mitochondrial isoform Mitochondrial |HomoSapiens| GN=GSR PE=1 SV=71 P00390 (+4)

442 factor 2 isoform Iso 1 |HomoSapiens| GN=EEF2 PE=1 SV=116 P13639

443 isoform Iso 1 |HomoSapiens| GN=CORO1C PE=1 SV=76 Q9ULV4

444 domain-containing protein 12 isoform Iso 1 |HomoSapiens| GN=TXND12 PE=1 SV=46 Q95881

445 and immunoglobulin domain-containing protein 8 isoform Iso 1 |HomoSapiens| GN=VSI8 PE=1 SV=24 Q5VU13

446 hydratase, mitochondrial isoform Iso 1 |HomoSapiens| GN=ECHS1 PE=1 SV=74 P30084

447 B6 isoform Iso 1 |HomoSapiens| GN=SERPINB6 PE=1 SV=70 P35237

448 reductase, mitochondrial isoform Iso 1 |HomoSapiens| GN=DECR1 PE=1 SV=76 Q16698

449 synthase, peroxisomal isoform Iso 1 |HomoSapiens| GN=AGP5 PE=1 SV=77 Q00116

450 phosphorylase isoform Iso 1 |HomoSapiens| GN=TYMP PE=1 SV=61 P19971

451 proton ATPase subunit B, brain isoform Isoform Iso 1 |HomoSapiens| GN=ATP6V1B2 PE=1 SV=60 P21281

452 isoform Iso 1 |HomoSapiens| GN=SLC17A5 PE=1 SV=28 Q9NRA2

453 pyrophosphatase 2, mitochondrial isoform Iso 2 |HomoSapiens| GN=PPA2 PE=1 SV=78 Q9H2U.2 (+1)

454 kinase isoform Iso 1 |HomoSapiens| GN=NAGK PE=1 SV=57 Q9U170

455 peptidase 2 isoform Iso 1 |HomoSapiens| GN=PPP7 PE=1 SV=62 Q9UHL4

456 isoform Iso 1 |HomoSapiens| GN=EMB PE=1 SV=61 Q6PCB8

457 cell death protein 6 isoform Iso 1 |HomoSapiens| GN=PDCC6 PE=1 SV=33 O75340

458 peptidase complex subunit 3 isoform Iso 1 |HomoSapiens| GN=SPCS3 PE=1 SV=31 P61009

459 lipid-transfer protein isoform SCPx |HomoSapiens| GN=SCP2 PE=1 SV=82 P22307 (+1)

460 isoform Iso 1 |HomoSapiens| GN=HK1 PE=1 SV=129 P19367 (+3)

461 protein gamma isoform Iso 1 |HomoSapiens| GN=YWHAG PE=1 SV=77 P61981

462 EVI2B isoform Iso 1 |HomoSapiens| GN=EVI2B PE=1 SV=34 P34910

463 kinase Fes/Fps isoform Iso 1 |HomoSapiens| GN=FES PE=1 SV=54 P07332 (+1)

464 protein 205 isoform Iso 1 |HomoSapiens| GN=TMEM205 PE=1 SV=33 Q6UW68

465 kinase C beta type isoform Beta+1 |HomoSapiens| GN=PRKCB PE=1 SV=77 P05771 (+1)

466 shock protein HSP 90-beta isoform Iso 1 |HomoSapiens| GN=HSP90AB1 PE=1 SV=142 P08338

467 glycoprotein 1 isoform Iso 1 |HomoSapiens| GN=ORM1 PE=1 SV=162 P02763

468 protein 1 subunit zeta isoform Iso 1 |HomoSapiens| GN=CCT6A PE=1 SV=62 P40227

469 carrier family 2, facilitated glucose transporter member 5 isoform Iso 1 |HomoSapiens| GN=SLC2A5 PE=1 SV=56 P27232

470 factor receptor-bound protein 2 isoform Iso 1 |HomoSapiens| GN=GRB2 PE=1 SV=71 P62993

471 protease 57 isoform Iso 1 |HomoSapiens| GN=PRSS57 PE=1 SV=45 Q6UWY2

472 protein 1 subunit delta isoform Iso 1 |HomoSapiens| GN=CCT4 PE=1 SV=77 P50991

473 activator complex subunit 2 isoform Iso 1 |HomoSapiens| GN=PSME2 PE=1 SV=53 Q9UL46

474 glucosidase isoform Iso 1 |HomoSapiens| GN=MOGS PE=1 SV=81 Q13724

475 of cytokinesis protein 8 isoform Iso 1 |HomoSapiens| GN=DOCK8 PE=1 SV=53 Q8NF50 (+2)

476 multivesicular body protein 4b isoform Iso 1 |HomoSapiens| GN=CHMP4B PE=1 SV=41 Q9H444

477 phosphatase, tissue-nonspecific isozyme isoform Iso 1 |HomoSapiens| GN=ALPL PE=1 SV=69 P05186

478 isoform Iso 1 |HomoSapiens| GN=CORO7 PE=1 SV=36 P57737 (+1)

479 family protein C6orf115 isoform Iso 1 |HomoSapiens| GN=C6orf115 PE=1 SV=29 Q9P1F3

480 protein Rab-5B isoform Iso 1 |HomoSapiens| GN=RAB5B PE=1 SV=51 P61020

481 acidic ribosomal protein P2 isoform Iso 1 |HomoSapiens| GN=RPLP2 PE=1 SV=47 P05387

482 protein p22 isoform Iso 1 |HomoSapiens| GN=CHP PE=1 SV=37 Q99653

483 transhydrogenase, mitochondrial isoform Iso 1 |HomoSapiens| GN=NNT PE=1 SV=84 Q13423

484 repeat-containing protein 3 isoform Iso 1 |HomoSapiens| GN=NHLRC3 PE=2 SV=33 Q51537

485 transfer flavoprotein subunit alpha, mitochondrial isoform Iso 1 |HomoSapiens| GN=ETFA PE=1 SV=64 P13804

486 isoform Br21 |HomoSapiens| GN=ANK1 PE=1 SV=54 P16157.21 (+16)

487 specific acyl-CoA dehydrogenase, mitochondrial isoform Iso 1 |HomoSapiens| GN=ACADM PE=1 SV=69 P11310 (+1)

488 alpha-11b isoform Iso 1 |HomoSapiens| GN=ITGA2B PE=1 SV=54 P08514

489 glucokinase isoform Iso 1 |HomoSapiens| GN=ADPGK PE=1 SV=45 Q9BRR6 (+1)

490 reductase isoform Iso 1 |HomoSapiens| GN=DCXR PE=1 SV=71 Q724W1

491 A isoform Iso 1 |HomoSapiens| GN=GLA PE=1 SV=69 P06280

492 glycoprotein 4 isoform Iso 1 |HomoSapiens| GN=CD36 PE=1 SV=92 P16671

493 protein C17orf62 isoform Iso 1 |HomoSapiens| GN=C17orf62 PE=1 SV=28 Q9BQA9

494 function-associated antigen 3 isoform Iso 1 |HomoSapiens| GN=CD58 PE=1 SV=40 P19256 (+2)

495 A dehydrogenase, mitochondrial isoform Iso 1 |HomoSapiens| GN=HADH PE=1 SV=99 Q16836 (+1)

496 homology domain-containing family O member 2 isoform Iso 1 |HomoSapiens| GN=PLEKHO2 PE=1 SV=23 Q8T055

497 dehydrogenase, cytoplasmic isoform Iso 1 |HomoSapiens| GN=MDH1 PE=1 SV=98 P40825

498 disulfide-isomerase TMX3 isoform Iso 1 |HomoSapiens| GN=TMX3 PE=1 SV=57 Q96J7

499 alpha-L isoform Iso 1 |HomoSapiens| GN=ITGAL PE=1 SV=85 P20701 (+2)

500 NipSnap homolog 3A isoform Iso 1 |HomoSapiens| GN=NIPSNAP3A PE=1 SV=39 Q9UWF0

501 S100-A3 isoform Iso 1 |HomoSapiens| GN=S100A3 PE=1 SV=28 P33764

502 protein 33 isoform Iso 1 |HomoSapiens| GN=TMEM33 PE=1 SV=40 P57088

503 GTPase-activating protein 4 isoform Iso 1 |HomoSapiens| GN=ARHGAP4 PE=1 SV=45 P98171 (+1)

504 expressed in FDCP 6 homolog isoform Iso 1 |HomoSapiens| GN=DEF6 PE=1 SV=46 Q9H4E7

505 carrier homolog 2 isoform Iso 1 |HomoSapiens| GN=MTCH2 PE=1 SV=49 Q9Y6C9

506 phospholipid-transporting ATPase IF isoform Iso 1 |HomoSapiens| GN=ATP11B PE=1 SV=56 Q9Y2G3

507 protein 4 isoform Iso 1 |HomoSapiens| GN=CKAP4 PE=1 SV=90 Q07065

508 isoform Iso 1 |HomoSapiens| GN=AGA PE=1 SV=57 P20933

509 domain-binding glutamic acid-rich-like protein 3 isoform Iso 1 |HomoSapiens| GN=SH3BGLR3 PE=1 SV=34 Q9H299

510 b-c1 complex subunit 9 isoform Iso 1 |HomoSapiens| GN=UQC10 PE=1 SV=27 Q9UDW1

511 proteasome non-ATPase regulatory subunit 6 isoform Iso 1 |HomoSapiens| GN=PSMD6 PE=1 SV=45 Q15008

512 RNA polymerase II transcriptional coactivator p15 isoform Iso 1 |HomoSapiens| GN=SUB1 PE=1 SV=52 P53999

513 homolog isoform Iso 1 |HomoSapiens| GN=IST1 PE=1 SV=48 P53990 (+3)

514 synthase isoform Iso 1 |HomoSapiens| GN=TBXAS1 PE=1 SV=115 P24557

515 inhibitor 1 isoform Iso 1 |HomoSapiens| GN=TM6IM6 PE=1 SV=39 P55061

516 isoform Iso 1 |HomoSapiens| GN=PLEC PE=1 SV=365 Q15149 (+8)

517 synthase subunit gamma, mitochondrial isoform Liver |HomoSapiens| GN=ATP5C1 PE=1 SV=44 P36542 (+1)

518 Pro-X carboxypeptidase isoform Iso 1 |HomoSapiens| GN=PRCP PE=1 SV=68 P42785

519 c oxidase subunit 5A, mitochondrial isoform Iso 1 |HomoSapiens| GN=COX5A PE=1 SV=45 P20674

520 isoform Iso 1 |HomoSapiens| GN=PRDX4 PE=1 SV=67 Q13162

521 subunit alpha type-5 isoform Iso 1 |HomoSapiens| GN=PSMA5 PE=1 SV=67 P28066

522 kinase-associated phosphoprotein 2 isoform Iso 1 |HomoSapiens| GN=SKAP2 PE=1 SV=27 O75563

523 c oxidase subunit 4 isoform 1, mitochondrial isoform Iso 1 |HomoSapiens| GN=COX4I1 PE=1 SV=55 P13073

524 protein Rap-2c isoform Iso 1 |HomoSapiens| GN=RAP2C PE=1 SV=40 Q9Y3L5

525 B isoform Iso 1 |HomoSapiens| GN=RNPEP PE=1 SV=70 Q9H4A4

526 protein SEC63 homolog isoform Iso 1 |HomoSapiens| GN=SEC63 PE=1 SV=36 Q9UGP8

527 dehydrogenase [ubiquinone] iron-sulfur subunit, mitochondrial isoform Iso 1 |HomoSapiens| GN=SDHB PE=1 SV=66 P21912

528 factor 6 isoform Iso 1 |HomoSapiens| GN=ARF6 PE=1 SV=49 P62330

529 1 isoform Iso 1 |HomoSapiens| GN=GGT1 PE=1 SV=70 P19440 (+3)

530 type I cuticular Ha4 isoform Iso 1 |HomoSapiens| GN=KRT34 PE=1 SV=35 Q76011

531 beta-1 chain isoform Iso 1 |HomoSapiens| GN=TUBB1 PE=1 SV=71 Q9H4B7

532 syndrome protein family member 2 isoform Iso 1 |HomoSapiens| GN=WASF2 PE=1 SV=39 Q9Y6W5 (+1)

533 necrosis factor alpha-induced protein 2 isoform Iso 1 |HomoSapiens| GN=TNFAIP2 PE=1 SV=37 Q03169

534	hydratase, mitochondrial isoform Iso 1 HomoSapiens GN=ACO2 PE=1 SV=110	Q99798
535	dehydrogenase-like oxidoreductase isoform Iso 1 HomoSapiens GN=SCCPDH PE=1 SV=51	Q8N8X0
536	subunit alpha type-6 isoform Iso 1 HomoSapiens GN=PSMA6 PE=1 SV=68	P60900
537	GTP-binding protein C isoform Iso 1 HomoSapiens GN=RRAGC PE=1 SV=51	Q9HB90 (+2)
538	ERGIC-53 isoform Iso 1 HomoSapiens GN=LMAN1 PE=1 SV=62	P49257
539	emp24 domain-containing protein 4 isoform Iso 1 HomoSapiens GN=TMED4 PE=1 SV=44	Q727H5 (+2)
540	inhibitor isoform Iso 1 HomoSapiens GN=RNH1 PE=1 SV=63	P13489
541	isoform Iso 1 HomoSapiens GN=MANBA PE=1 SV=45	O00462
542	family CARD domain-containing protein 4 isoform Iso 1 HomoSapiens GN=NLR4 PE=2 SV=23	Q9NPP4 (+1)
543	synthase-coupling factor 6, mitochondrial isoform Iso 1 HomoSapiens GN=ATP5J PE=1 SV=43	P18859
544	proton ATPase subunit C 1 isoform Iso 1 HomoSapiens GN=ATP6V1C1 PE=1 SV=62	P21283
545	c oxidase subunit 6B1 isoform Iso 1 HomoSapiens GN=COX6B1 PE=1 SV=46	P14854
546	protein kinase 1 isoform Iso 1 HomoSapiens GN=MAPK1 PE=1 SV=100	P28482
547	type I cuticular Ha5 isoform Iso 1 HomoSapiens GN=KRT35 PE=1 SV=48	Q92764
548	type I cytoskeletal 14 isoform Iso 1 HomoSapiens GN=KRT14 PE=1 SV=109	P02533
549	repeat-containing protein 15 isoform Iso 1 HomoSapiens GN=LRR15 PE=1 SV=75	Q8TF66 (+1)
550	isoform Iso 1 HomoSapiens GN=AHCY PE=1 SV=76	P23526
551	isoform Iso 1 HomoSapiens GN=TOR1A PE=1 SV=49	O14656
552	kinase Lyn isoform Iso 2 HomoSapiens GN=LYN PE=1 SV=88	P07948.2
553	necrosis factor alpha-induced protein 8 isoform Iso 1 HomoSapiens GN=TNFAIP8 PE=1 SV=22	O95379 (+2)
554	reductase isoform Iso 1 HomoSapiens GN=TECR PE=1 SV=59	Q9N201
555	RNA helicase DDX3X isoform Iso 1 HomoSapiens GN=DDX3X PE=1 SV=87	O00571 (+1)
556	A isoform Iso 1 HomoSapiens GN=ARSA PE=1 SV=65	P15289
557	1,4,5-trisphosphate receptor-interacting protein isoform Iso 1 HomoSapiens GN=ITPRIP PE=1 SV=27	Q8IWB1
558	phosphoribosyltransferase isoform Iso 1 HomoSapiens GN=APRT PE=1 SV=70	P07741
559	type II cytoskeletal 5 isoform Iso 1 HomoSapiens GN=KRT5 PE=1 SV=148	P13647
560	isoform B HomoSapiens GN=PLIN3 PE=1 SV=82	O60664 (+1)
561	type II cytoskeletal 1b isoform Iso 1 HomoSapiens GN=KRT77 PE=1 SV=50	Q72794
562	synthase subunit g, mitochondrial isoform Iso 1 HomoSapiens GN=ATP5L PE=1 SV=35	O75964
563	type I cuticular Ha3-II isoform Iso 1 HomoSapiens GN=KRT33B PE=1 SV=41	Q14525
564	domain-containing protein 88B isoform Iso 1 HomoSapiens GN=CCDC88B PE=1 SV=40	A6NC98 (+2)
565	isoform Iso 1 HomoSapiens GN=PLXNC1 PE=1 SV=46	O60486
566	leucine-rich nuclear phosphoprotein 32 family member E isoform Iso 1 HomoSapiens GN=ANP32E PE=1 SV=41	Q9BTT0
567	isomerase, mitochondrial isoform Iso 1 HomoSapiens GN=ECH1 PE=1 SV=52	Q13011
568	ETHE1, mitochondrial isoform Iso 1 HomoSapiens GN=ETHE1 PE=1 SV=50	O95571
569	isoform Iso 1 HomoSapiens GN=TTR PE=1 SV=123	P02766
570	phosphatase 2A 56 kDa regulatory subunit alpha isoform Iso 1 HomoSapiens GN=PPP2R5A PE=1 SV=39	Q15172 (+1)
571	alanine-rich C-kinase substrate isoform Iso 1 HomoSapiens GN=MARCKS PE=1 SV=49	P29866
572	b-c1 complex subunit 7 isoform Iso 1 HomoSapiens GN=UQCRB PE=1 SV=41	P14927
573	g-like protein 2 isoform Iso 1 HomoSapiens GN=LYG2 PE=1 SV=24	Q865G7
574	type I cytoskeletal 39 isoform Iso 1 HomoSapiens GN=KRT39 PE=1 SV=21	Q6A163
575	acid dehydratase isoform Iso 2 HomoSapiens GN=ALAD PE=1 SV=91	P13716.2 (+1)
576	protein 2 isoform Iso 1 HomoSapiens GN=HEBP2 PE=1 SV=34	O9Y524 (+1)
577	superfamily member 6 isoform Iso 1 HomoSapiens GN=IGSF6 PE=2 SV=30	O95976
578	acetyltransferase component of pyruvate dehydrogenase complex, mitochondrial isoform Iso 1 HomoSapiens GN=DLAT PE=1 SV=74	P10515
579	transfer flavoprotein subunit beta isoform Iso 2 HomoSapiens GN=ETFB PE=1 SV=67	P38117.2 (+1)
580	alpha-4 chain isoform Iso 1 HomoSapiens GN=TPM4 PE=1 SV=93	P67936
581	dehydrogenase [ubiquinone] 1 alpha subcomplex subunit 5 isoform Iso 1 HomoSapiens GN=NDUF5A PE=1 SV=37	Q16718
582	protein 2 isoform Iso 1 HomoSapiens GN=NBEAL2 PE=1 SV=29	Q6ZNI1 (+2)
583	family member X1 isoform Iso 1 HomoSapiens GN=NLRX1 PE=1 SV=39	Q86UT6 (+1)

END OF FILE