

THE LANCET

Infectious Diseases

Supplementary appendix

This appendix formed part of the original submission. We post it as supplied by the authors.

Supplement to: Khalil A, von Dadelszen P, Kalafat E, et al. Change in obstetric attendance and activities during the COVID-19 pandemic. *Lancet Infect Dis* 2020; published online Oct 5. [https://doi.org/10.1016/S1473-3099\(20\)30779-9](https://doi.org/10.1016/S1473-3099(20)30779-9).

Figure: The number of prenatal bookings (a), obstetric triage visits (b), and births (c) per week in years 2020 (red) and 2019 (blue). The dots represent the number of antenatal bookings, visits or births (y-axis) in their respective weeks (x-axis). The red (2020) and blue (2019) lines show the trajectory of change fitted with spline regression. The differences between the 2020 and 2019 epochs were assessed with mixed-effects regression. The shaded areas depict the 95% prediction intervals. Intervals in which shaded areas diverge suggest significant difference between years 2020 and 2019. Three vertical black lines depict the points when the pandemic started in the UK, and strict lockdown began and ended.

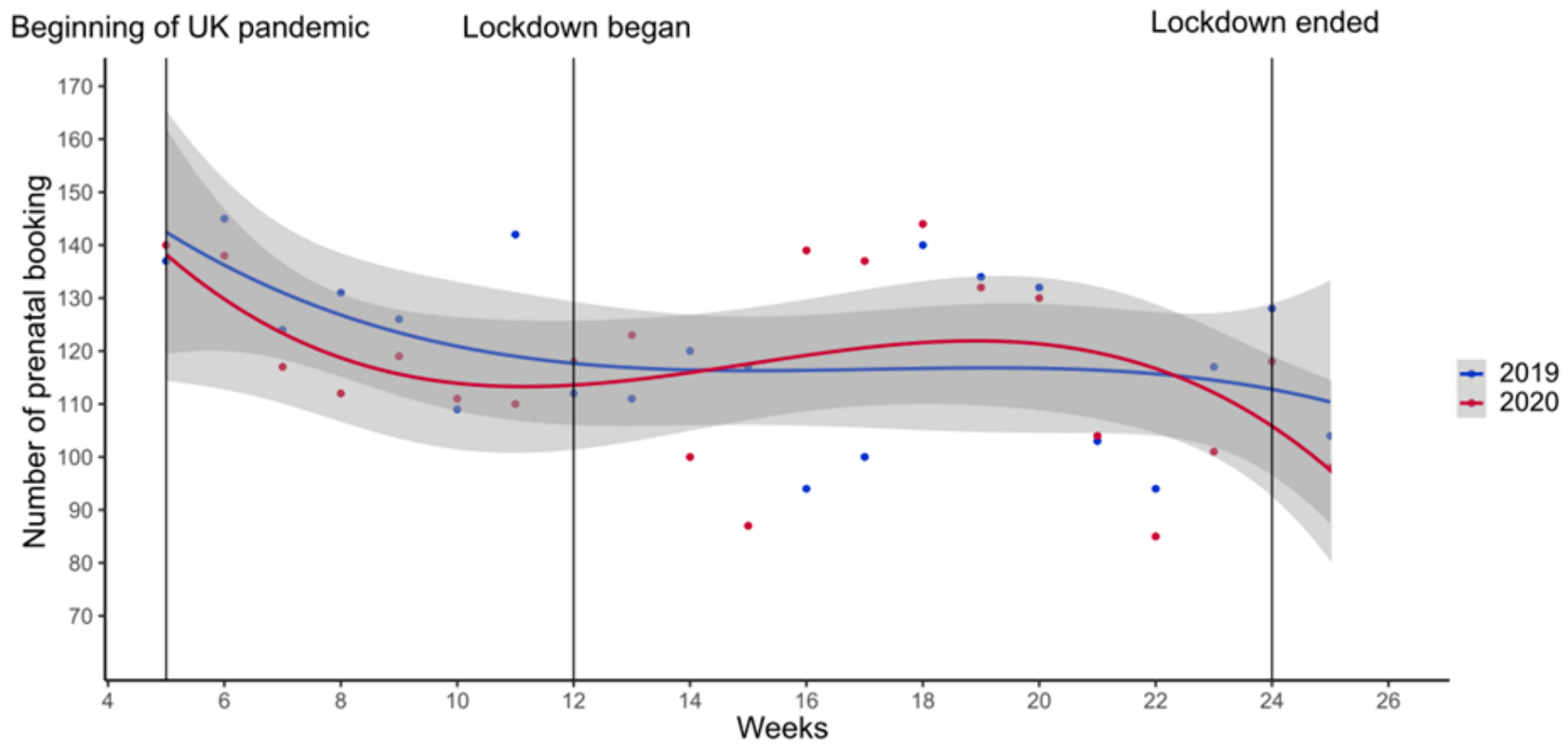


Figure 1a

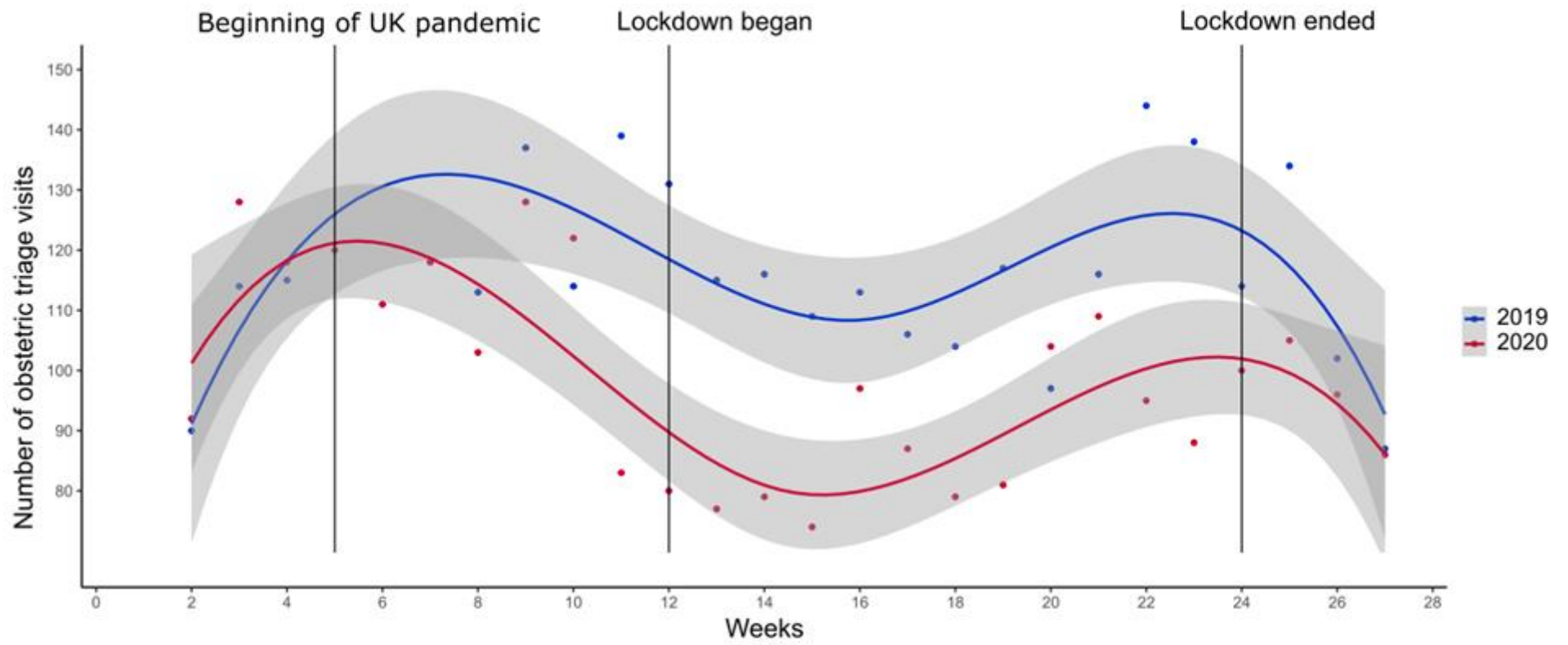


Figure 1b

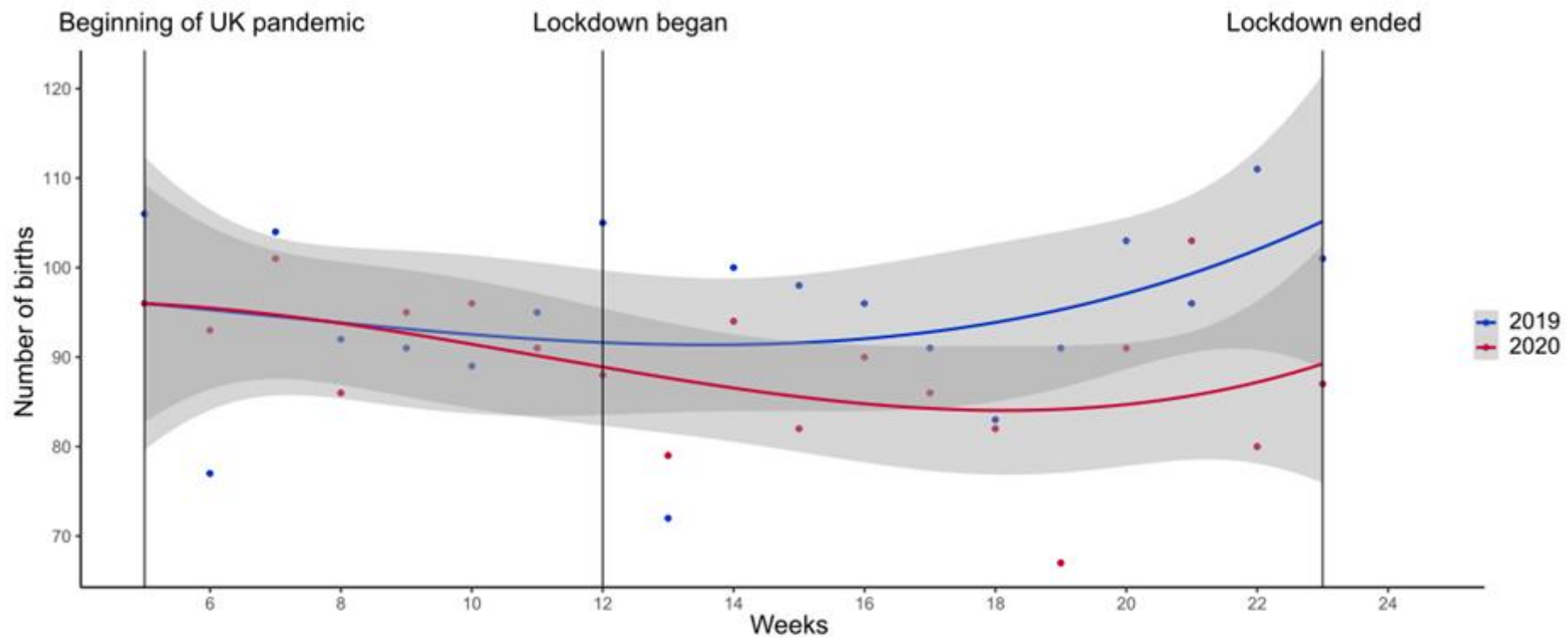


Figure 1c