

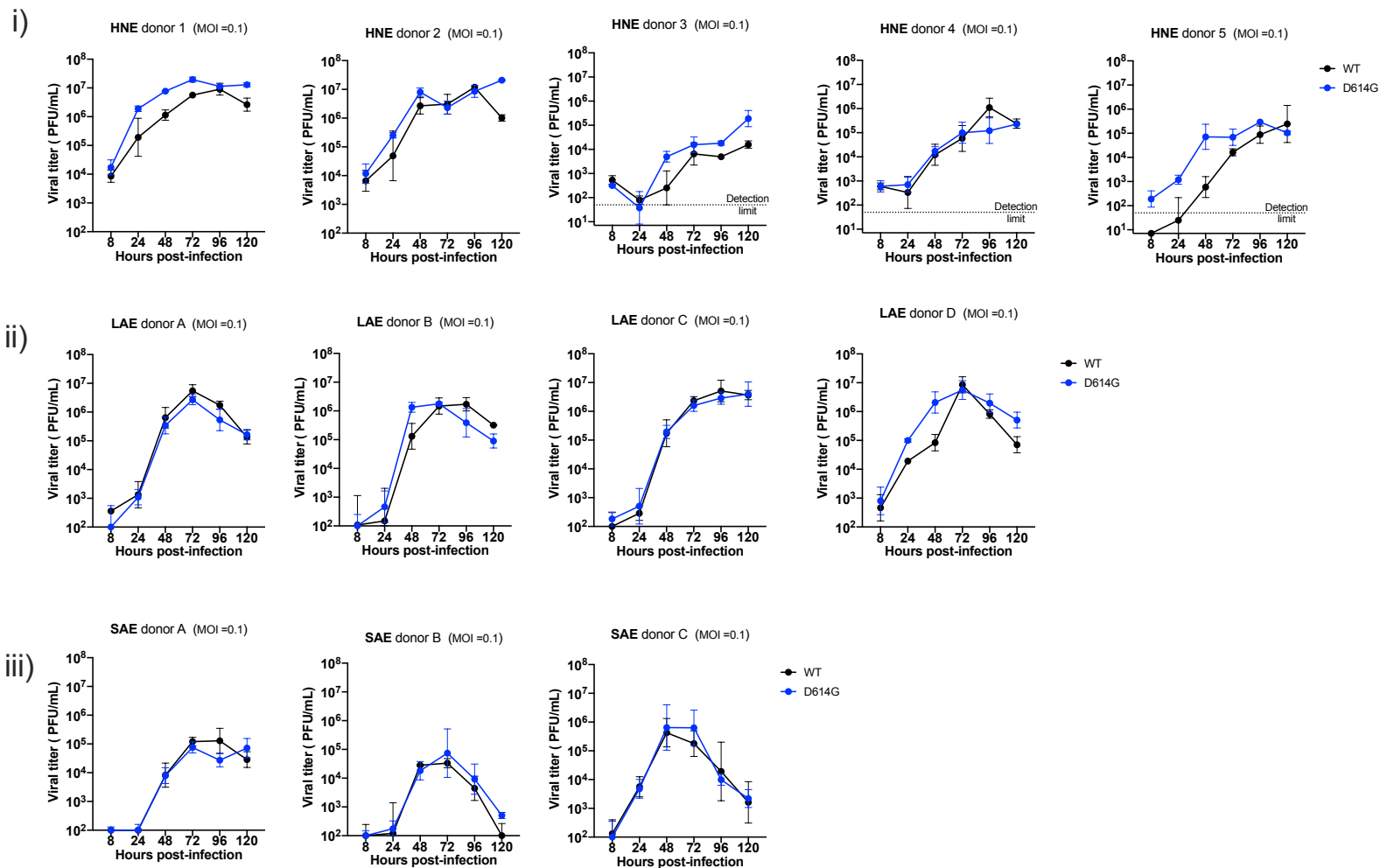
579 **Figure S1. Additional data of WT and D614G infected primary human airway epithelial**
580 **cells.** A. Growth curves of the two viruses in individual primary nasal (i), large airway (ii) and
581 small airway (iii) epithelial cells relating to Fig 1 D to F, MOI = 0.1; plaque assay detection limit:
582 $1.7 \log_{10}$ PFU/mL. B. comparison of WT and D614G titer at 96h on HNE, LAE and SAE. C.
583 Whole-mount staining of WT and D614G infected LAE cultures, blue: Hoechst (nuclei), red:
584 phalloidin (F-actin), white: cilia (α -tubulin); yellow: MUC5AC, Green: SARS-CoV-2 N protein,
585 scale bar: 50 μ m.

586

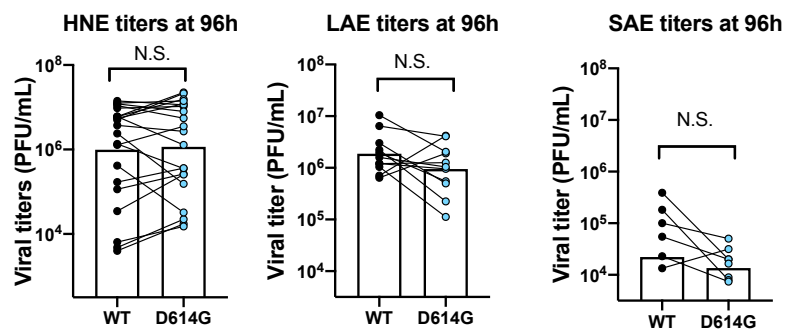
587 **Figure S2. Experimental design of hamster transmission study.** A, Timeline of nasal wash
588 sampling from infected and exposed animals. B. Image of hamsters in the cage in transmission
589 study.

Figure S1

A



B



C

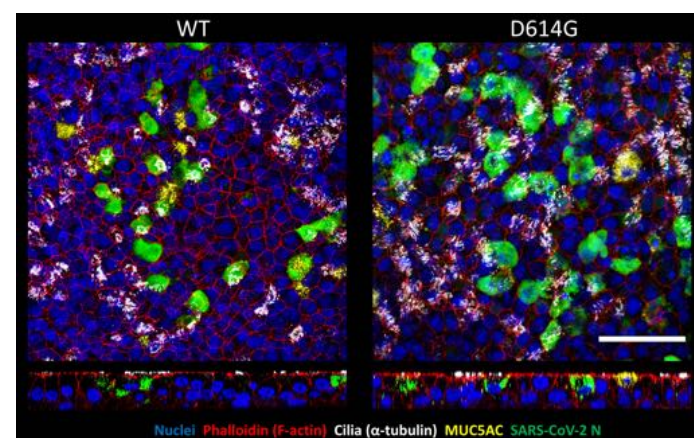




Figure S2

A

Infected hamsters (Day post infection)	0	1	2	3	4	5	6	7	8
Exposed hamsters (Day post exposure)	-	0	1	2	3	4	5	6	7

 : nasal wash sampling
 : nasal wash sampling

B

