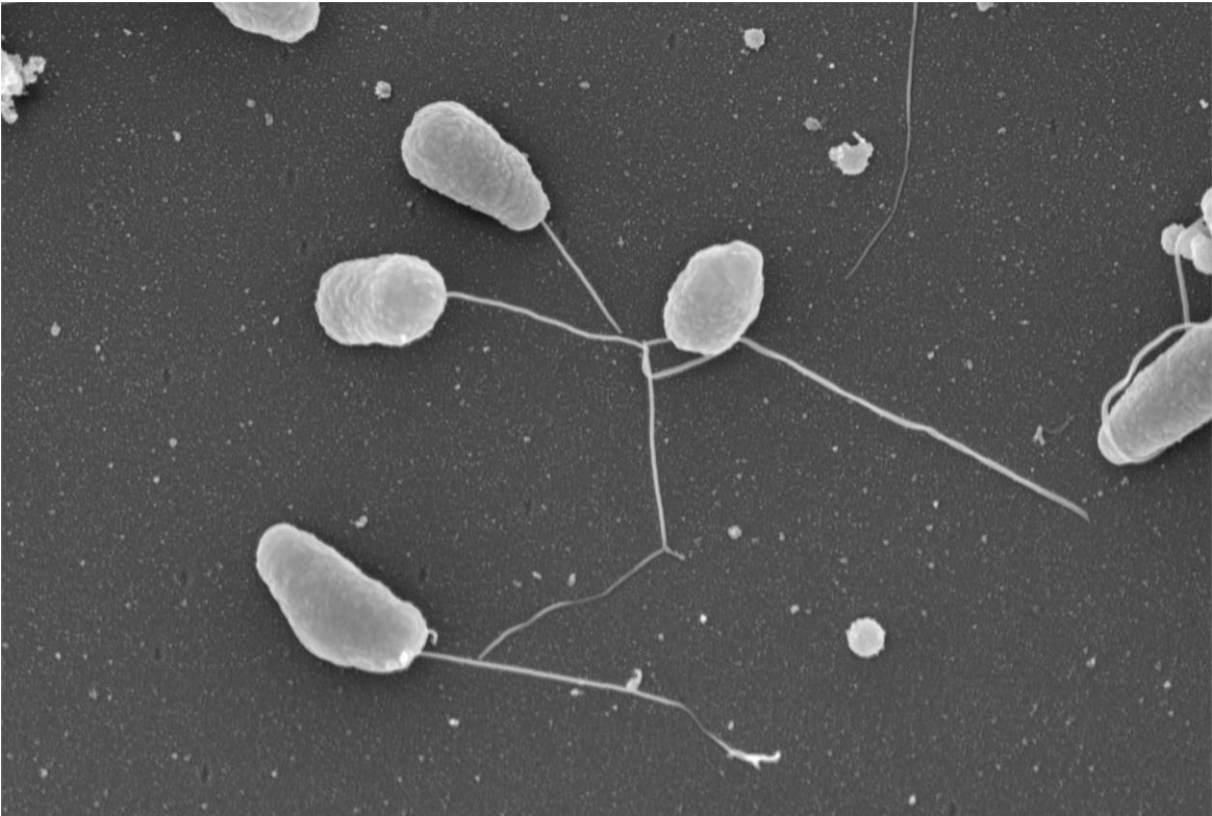
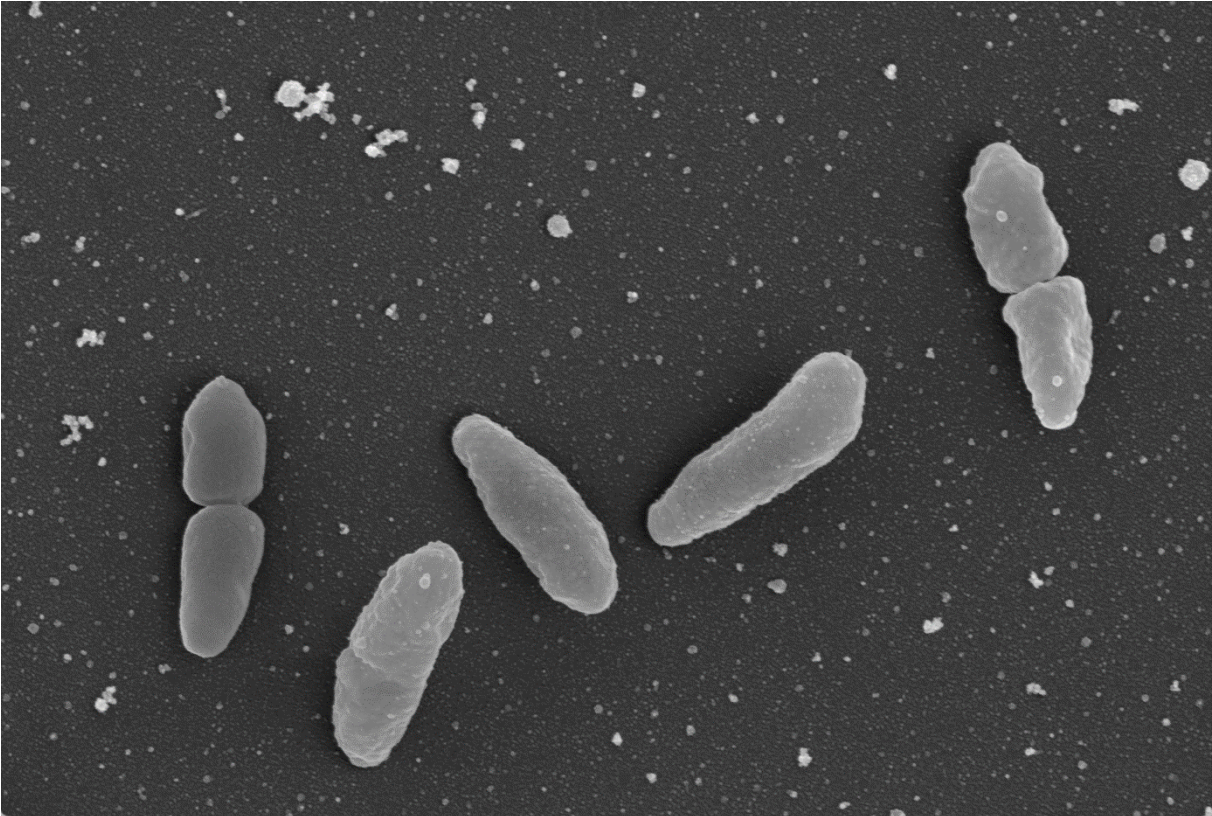


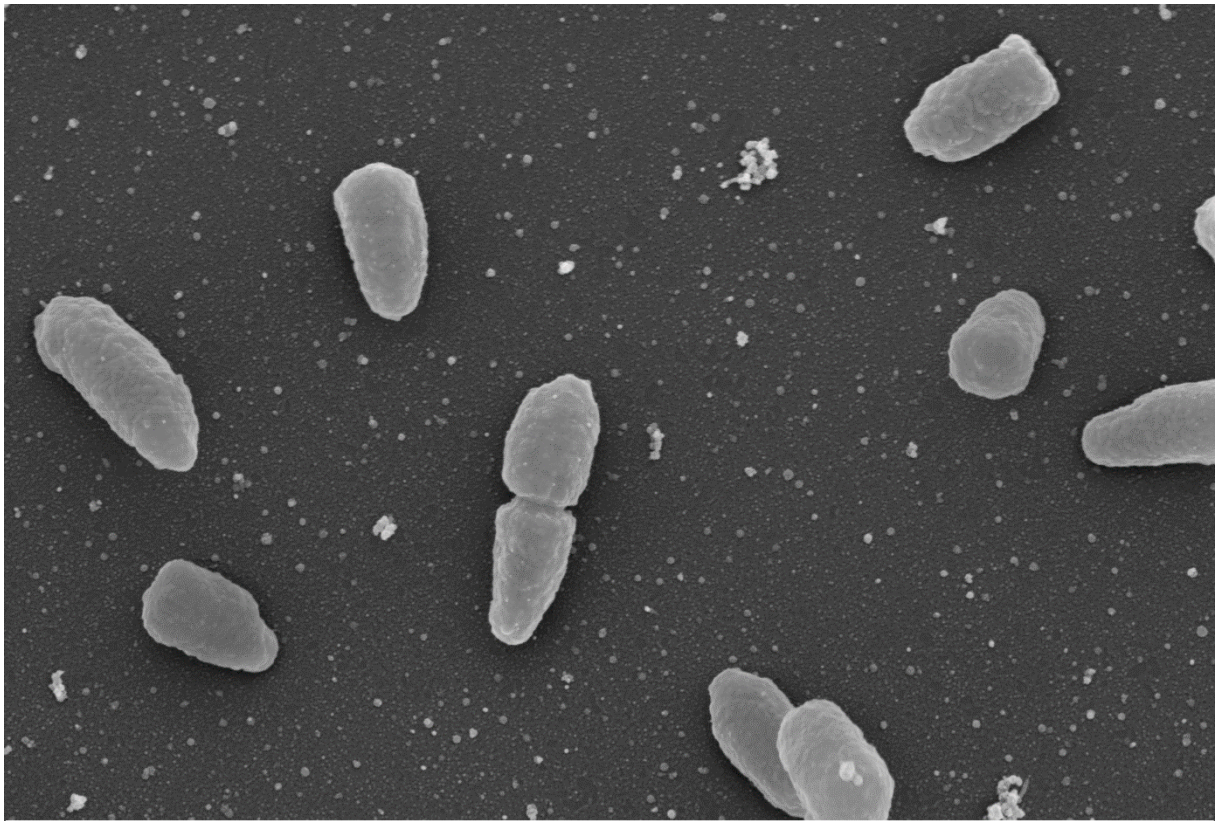
Figure 1B – Source File Scanning Electron microscopy



1  $\mu$ m      Mag = 30.01 K X    6.833 nm      Pseudomonas PA14 dmotABCD\_04.tif      25 Jan 2018  
EHT = 5.00 kV    -0.0 °  
WD = 3.0 mm    Signal B = InLens    Mix Signal = 0.7500    Signal A = HE-SE2    ESB Grid = 0 V    CC Pressure = 0.0 %    M. Rohde, H Z I



1  $\mu$ m      Mag = 30.01 K X    6.833 nm      Pseudomonas PA14 dflgk\_04.tif      26 Jan 2018  
EHT = 5.00 kV    -0.0 °  
WD = 3.0 mm    Signal B = InLens    Mix Signal = 0.7500    Signal A = HE-SE2    ESB Grid = 0 V    CC Pressure = 0.0 %    M. Rohde, H Z I



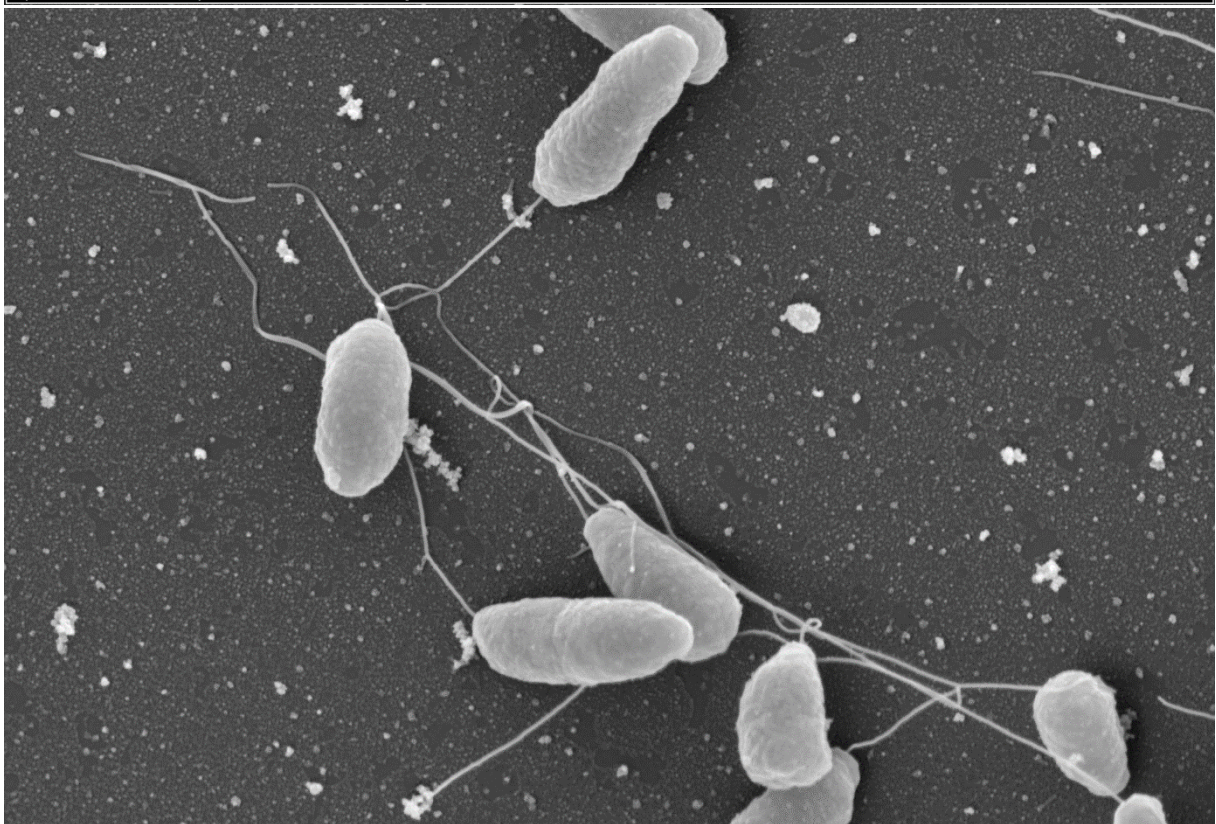
1  $\mu$ m

Mag = 30.01 K X 6.833 nm  
EHT = 5.00 kV -0.0 °  
WD = 3.0 mm

Pseudomonas PA14 dfliC\_04.tif

25 Jan 2018

Signal B = InLens Mix Signal = 0.7500 Signal A = HE-SE2 ESB Grid = 0 V CC Pressure = 0.0 % M. Rohde, H Z I



1  $\mu$ m

Mag = 30.01 K X 6.833 nm  
EHT = 5.00 kV -0.0 °  
WD = 3.0 mm

Pseudomonas PA14 Wt\_04.tif

25 Jan 2018

Signal B = InLens Mix Signal = 0.7500 Signal A = HE-SE2 ESB Grid = 0 V CC Pressure = 0.0 % M. Rohde, H Z I