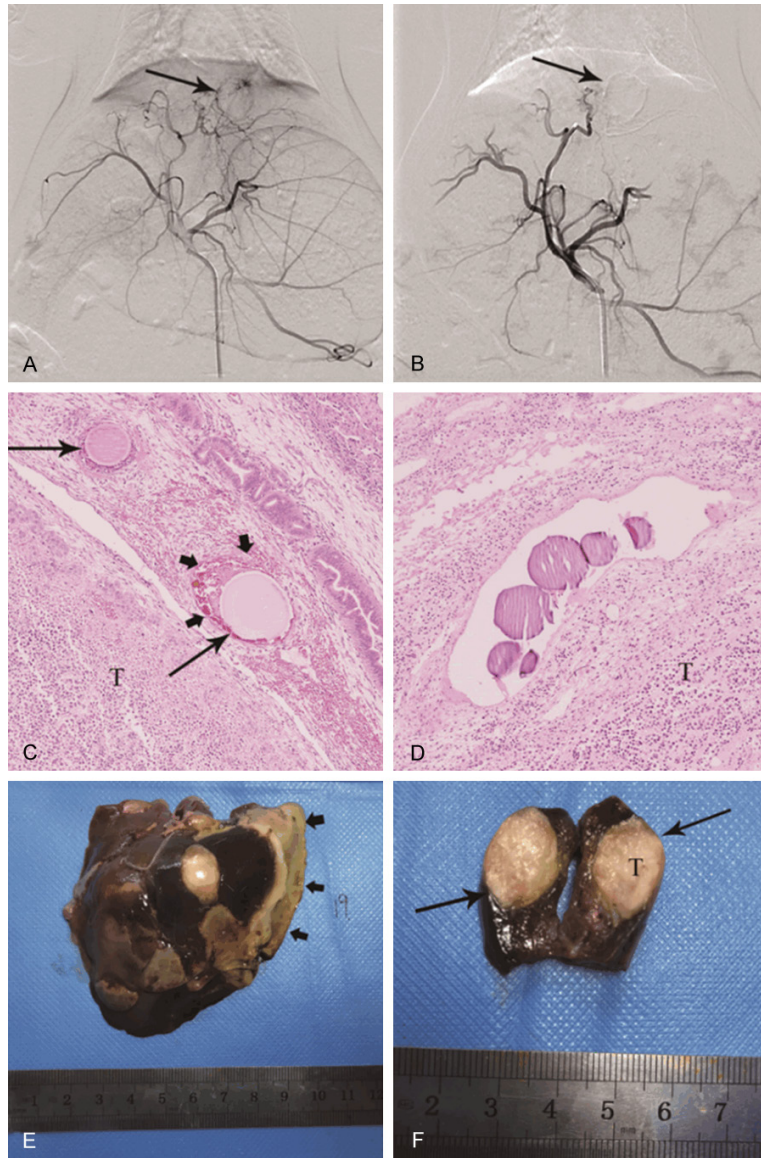


## ATO-loaded CSM in TACE-treated liver tumors



**Supplementary Figure 1.** Representative images of CSM-ATO treatment. A: The parenchymal phase of hepatic arteriography of tumors in VX2 liver tumor rabbits at 16 d after tumor construction. B: The parenchymal phase of hepatic arteriography of tumors in VX2 liver tumor rabbits after treatment. C: The morphology of CSM beads in the peritumor vessels of VX2 liver tumor rabbits at 1 d after treatment. D: The morphology of CSM beads in the peritumor vessels of VX2 liver tumor rabbits at 14 d after treatment. E: The liver specimens of VX2 liver tumor rabbits at 14 d after treatment. F: Tumor specimens (cut by the maximum diameter) of VX2 liver tumor rabbits at 14 d after treatment. CSM: CalliSpheres<sup>®</sup> microspheres; ATO: arsenic trioxide; T: tumor tissue.