

Hepatocellular carcinoma stemness indices predict survival

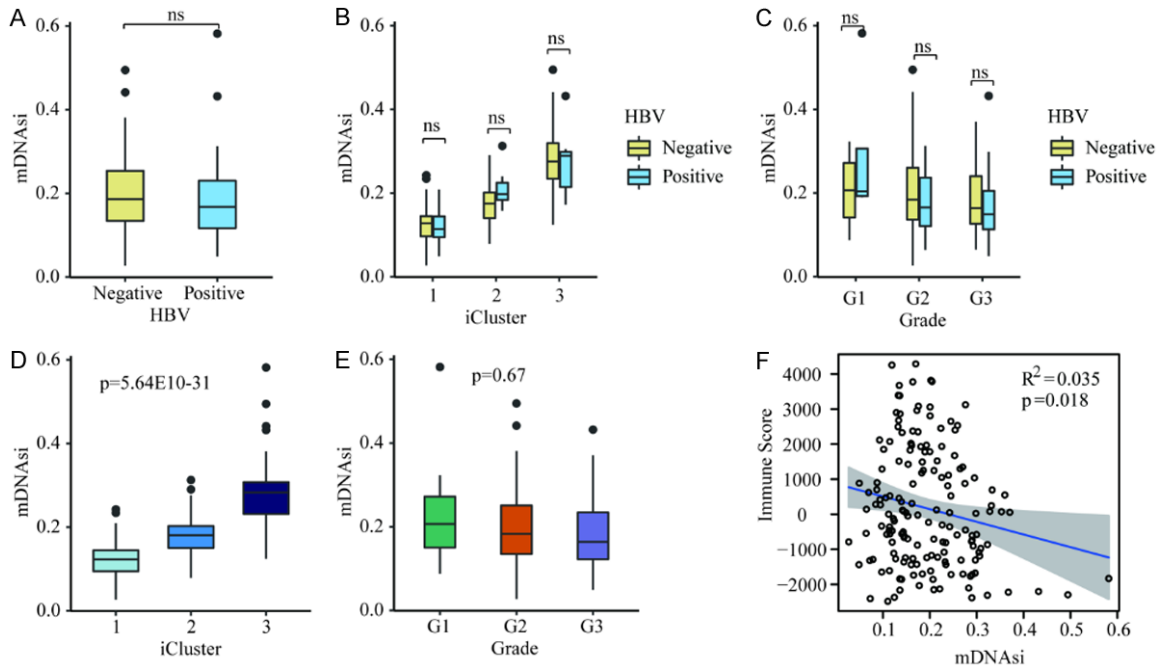


Figure S1. Relationship between mDNAsi values and clinical characteristics. A. There were no significant correlations between mDNAsi scores and HBV infections in CGA HCC samples. B. mDNAsi values were highest in iCluster3 and lowest in iCluster1 for CGA HCC samples without HBV infections. C. There were no significant correlations between mDNAsi scores and pathology grading in CGA HCC samples without HBV infections. D. mDNAsi scores were highest in iCluster3 and lowest in iCluster1 for all CGA HCC samples. E. There were no significant correlations between mDNAsi values and pathology grading for all CGA HCC samples. F. Immune scores were inversely related to mDNAsi values.

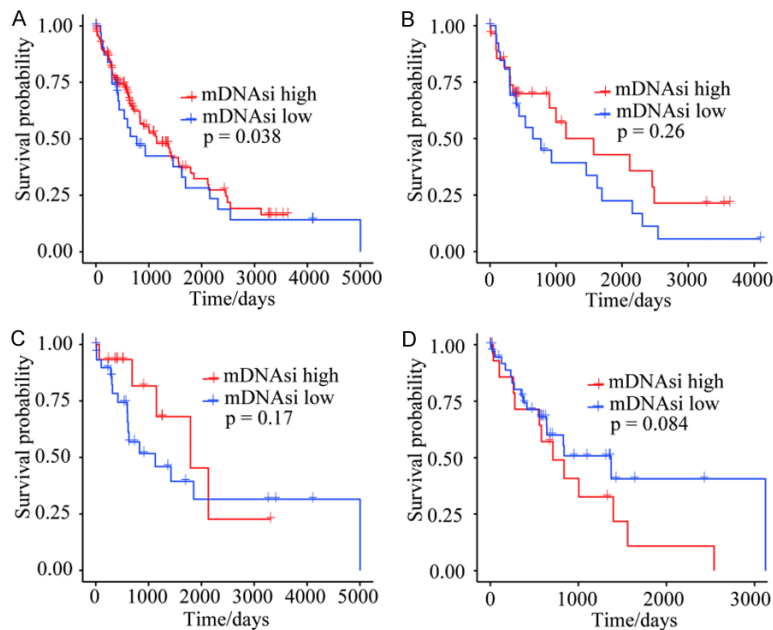


Figure S2. Kaplan-Meier survival analyses for CGA HCC samples. A. Survival probabilities for the mDNAsi-high group were higher than those of the mDNAsi-low group for all CGA HCC samples. B. Survival probabilities for the mDNAsi-low group and the mDNAsi-high group in iCluster1 were not significantly different. C. Survival probabilities for the mDNAsi-low and the mDNAsi-high group in iCluster2 were not significantly different. D. Survival probabilities for the mDNAsi-low group and the mDNAsi-high group in iCluster3 were not significantly different.