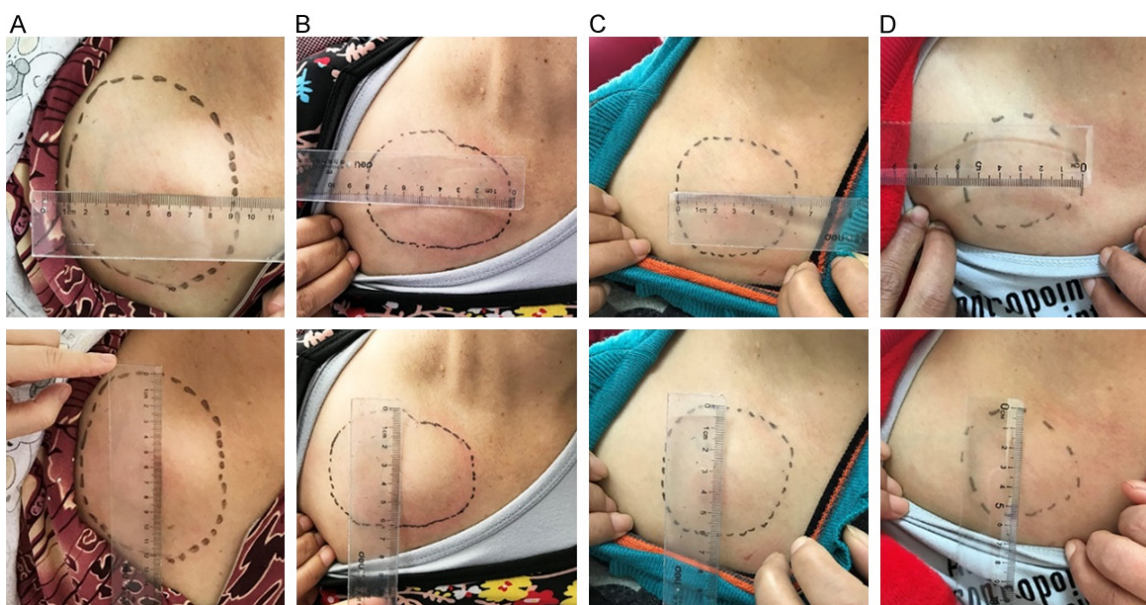


Identifying phenotype discordance between primary and synchronous metastatic BC

Supplementary Table 1. Primary antibodies used in immunohistochemistry analysis and results of the primary and metastatic tumors

Antibody	Tumor Stain		Source/Isotype	Company	Dilution
	Primary	Metastasis			
ER	Strong positive	Negative	Mouse monoclonal antibody	Fuzhou Maxim Biotech	Ready-to-use
PR	Strong positive	Negative	Mouse monoclonal antibody	Fuzhou Maxim Biotech	Ready-to-use
HER2	Strong positive	Partial weak positive	Rabbit monoclonal IgG	Abcam	1:3000
Ki-67	20% positive	90% positive	Rabbit monoclonal IgG	Abcam	1:100
CD44	Partial weak positive	Strong positive	Rabbit polyclonal IgG	Proteintech Group	1:500
CD24	Strong positive	Strong positive	Mouse monoclonal IgG1	Abcam	1:100
ALDH1	Moderate positive	Strong positive	Rabbit polyclonal IgG	Proteintech Group	1:400



Supplementary Figure 1. The size of metastatic subclavian lymph node was shown before (A), 2 cycles (B), 4 cycles (C) and 6 cycles (D) after initiation of GP regimen, demonstrating gradual shrinkage of the targeted tumor lesion.