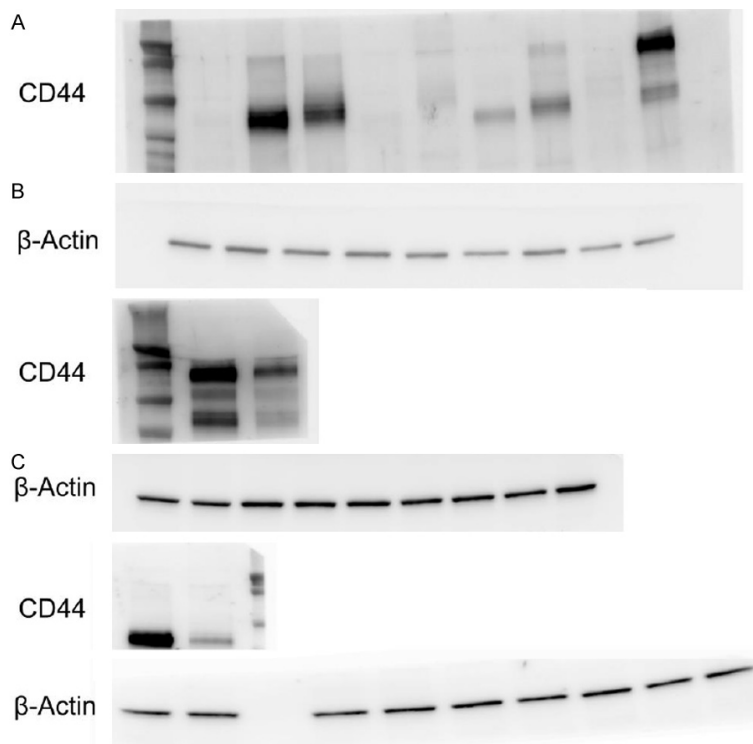
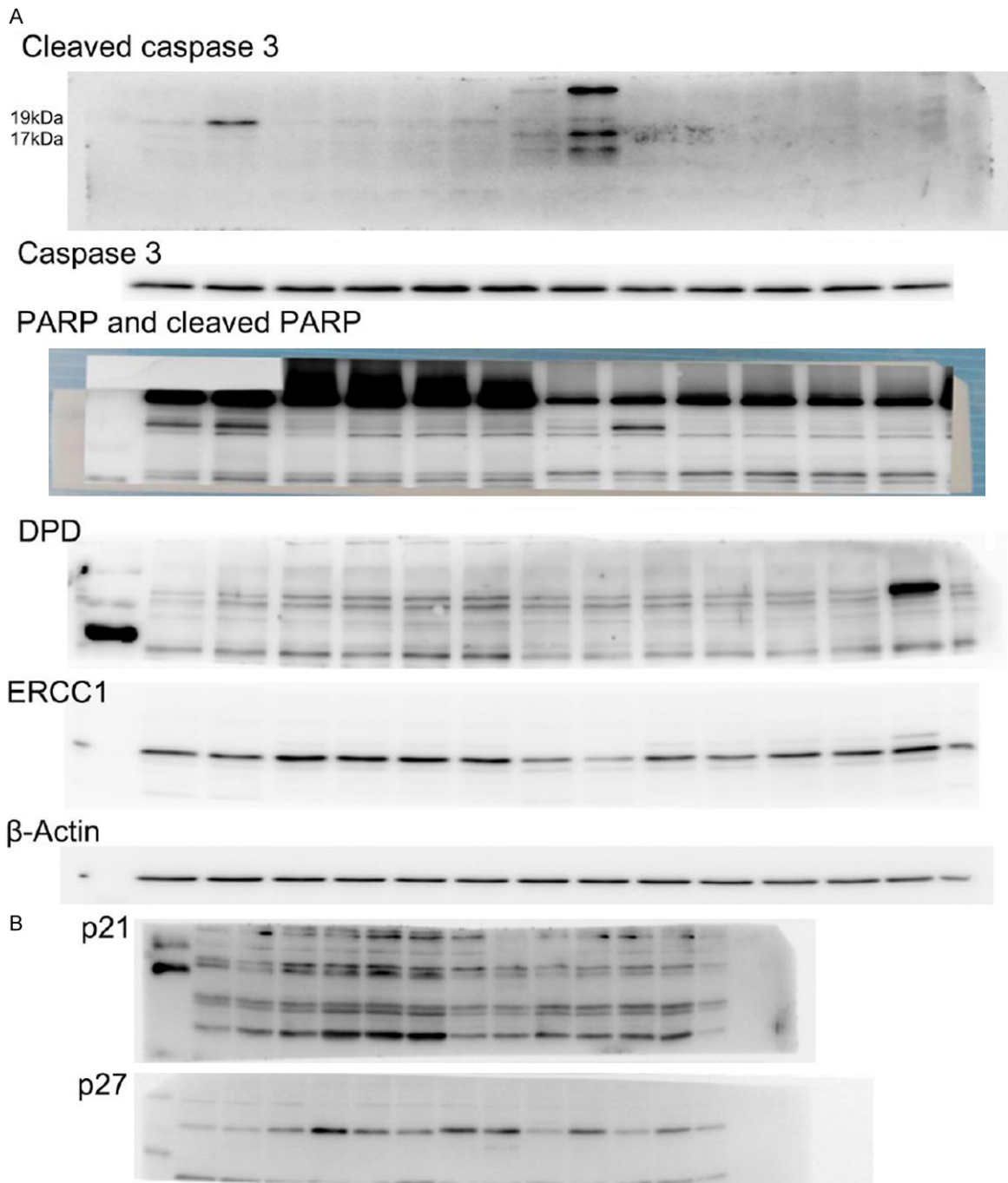


Clinical and biological impacts of CD44 expression in colorectal liver metastasis



Supplemental Figure 1. Original western images of CD44 expression. A. CD44 protein expression in colon cancer cell lines. B. Downregulation of CD44 protein expression in HT29 cells. C. Downregulation of CD44 protein expression in SW480HT29 cells. β -actin is used as an internal control.

Clinical and biological impacts of CD44 expression in colorectal liver metastasis



Supplemental Figure 2. Original western images of cleaved caspase 3, Caspase 3, cleaved PARP, PARP, DPD, ERCC1, P21, and P27 expressions. A. Original western images of cleaved caspase 3, Caspase 3, cleaved PARP, PARP, DPD, and ERCC1. β -actin is used as an internal control. B. Original western images of P21 and P27 protein expressions.