

# Backbone and sidechain resonance assignments and secondary structure of Scc4 from *Chlamydia trachomatis*

## *Biomolecular NMR Assignments*

Thilini O. Ukwaththage,<sup>1</sup> Marco Tonelli,<sup>2</sup> and Megan A. Macnaughtan<sup>1\*</sup>

<sup>1</sup> Department of Chemistry, Louisiana State University, Baton Range, LA 70803, USA

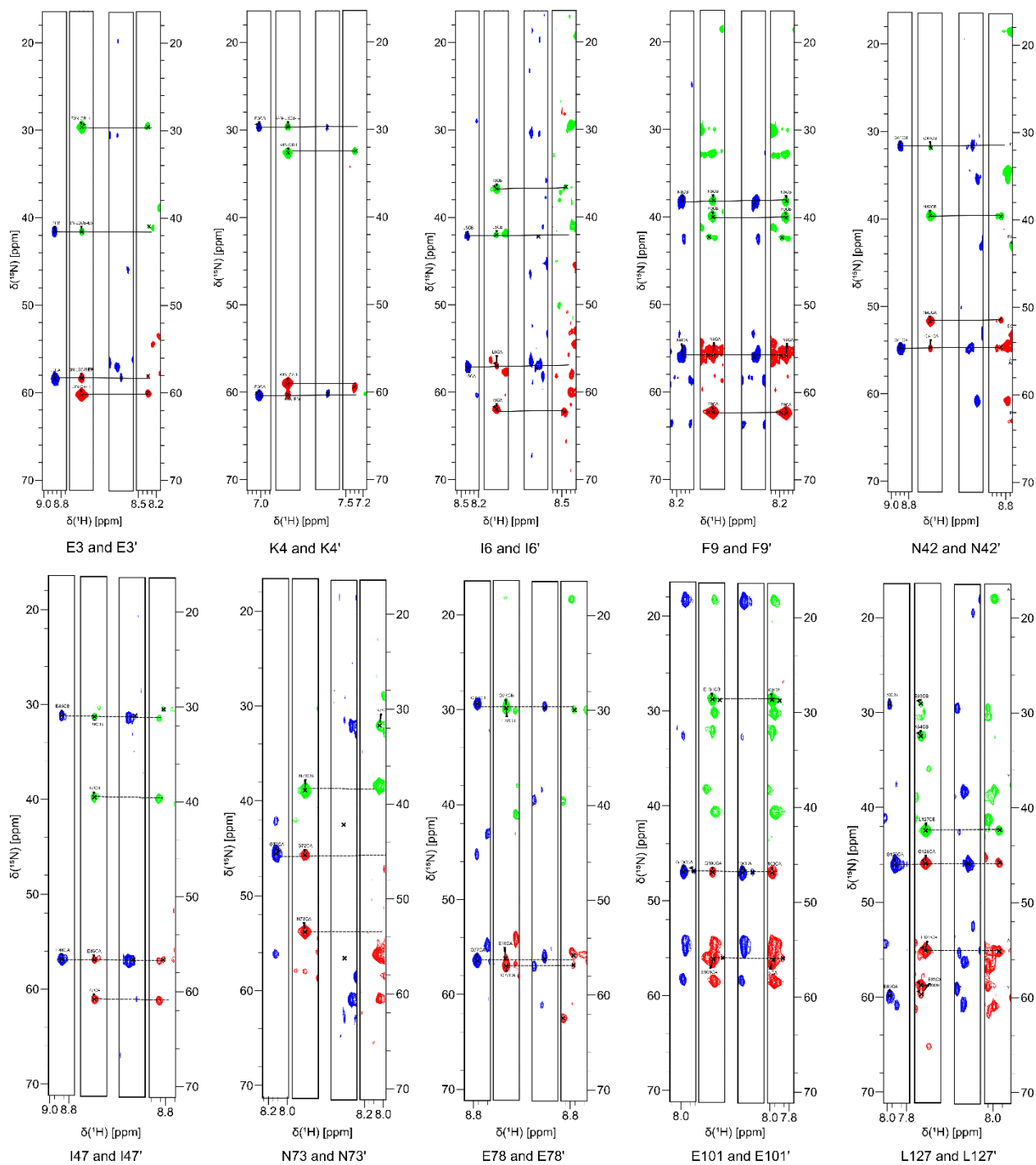
<sup>2</sup> National Magnetic Resonance Facility at Madison and Biochemistry Department, University of Wisconsin-Madison, Madison, WI 53706, USA

\*corresponding author (email: macnau@lsu.edu; phone: 225-578-7975)

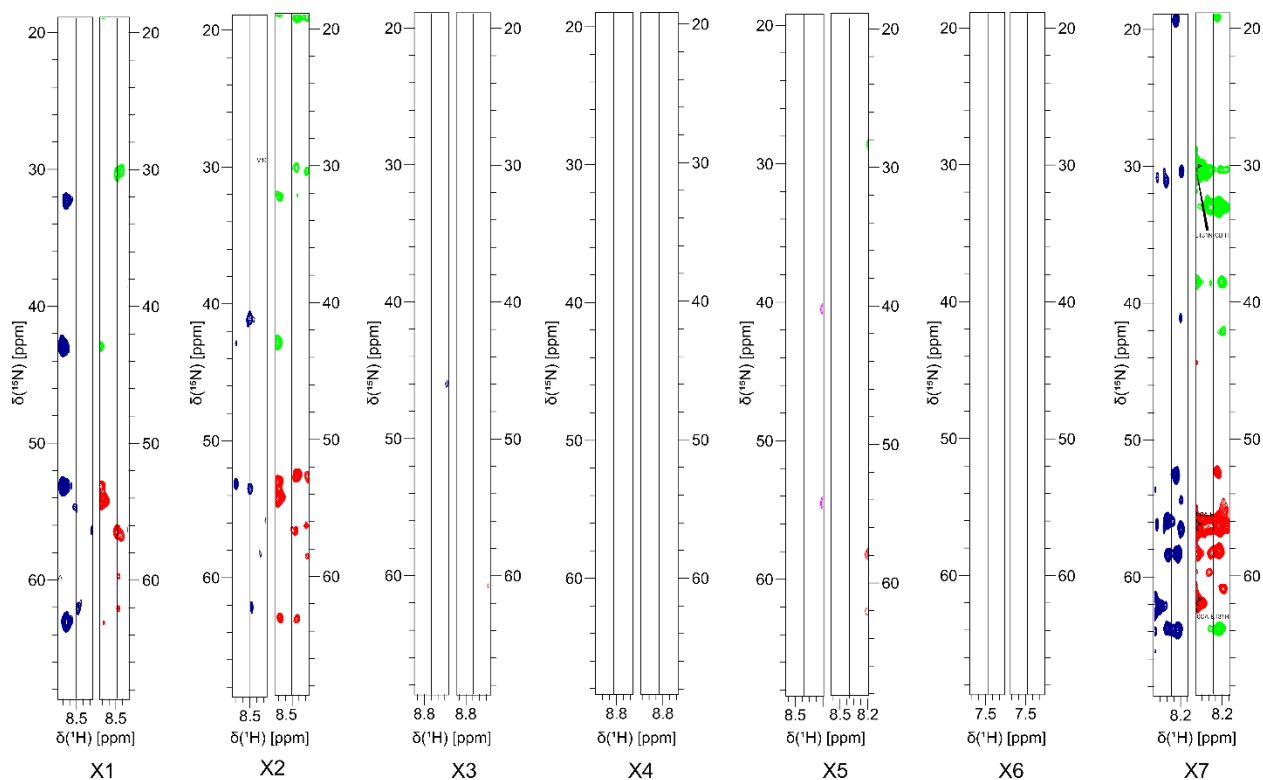
### **Electronic Supplementary Material – Online Resource 1**

Supplementary Fig. 1.....	2
Supplementary Fig. 2.....	3
Supplementary Fig. 3.....	4
Supplementary Fig. 4.....	5

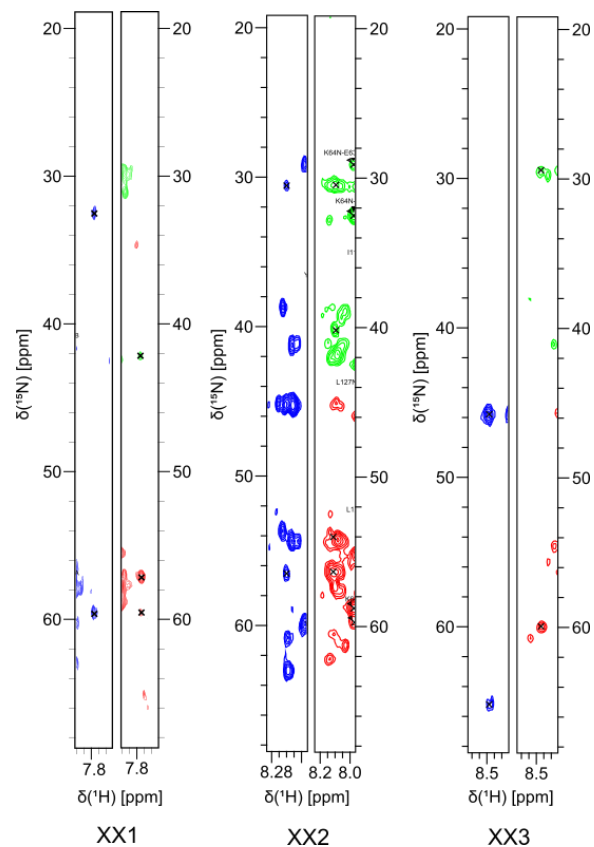




**Supplementary Fig. 2** The 3D strip plots of the multiple slow-exchange peaks assigned in the  $^1\text{H}$ ,  $^{15}\text{N}$  HSQC. (blue labels in Supplementary Fig. 1). In each pair of strip plots, the first strip is the  $^{15}\text{N}$  plane from the 3D CBCA(CO)NH experiment and the second strip is the corresponding  $^{15}\text{N}$  plane from the 3D HNCACB experiment. The horizontal lines indicate resonances used to assign the peaks. Assignment labels within the strip plots were not intended to be readable and can be disregarded. The contour levels in each plot are identical.



**Supplementary Fig. 3** The 3D strip plots of the unassigned peaks in the  $^1\text{H},^{15}\text{N}$  HSQC due to missing  $\text{C}^\alpha$  and  $\text{C}^\beta$  resonances (green labels in Supplementary Fig. 1). In each pair of strip plots, the first strip is the  $^{15}\text{N}$  plane from the 3D CBCA(CO)NH experiment and the second strip is the corresponding  $^{15}\text{N}$  plane from the 3D HNCACB experiment. Assignment labels within the strip plots were not intended to be readable and can be disregarded. The contour levels in each plot are identical.



**Supplementary Fig. 4** The 3D strip plots of the unassigned peaks in the  $^1\text{H}$ ,  $^{15}\text{N}$  HSQC due to ambiguous  $\text{C}^\alpha$  and  $\text{C}^\beta$  resonances (cyan labels in Supplementary Fig. 1). In each pair of strip plots, the first strip is the  $^{15}\text{N}$  plane from the 3D CBCA(CO)NH experiment and the second strip is the corresponding  $^{15}\text{N}$  plane from the 3D HNCACB experiment. Assignment labels within the strip plots were not intended to be readable and can be disregarded. The contour levels in each plot are identical.