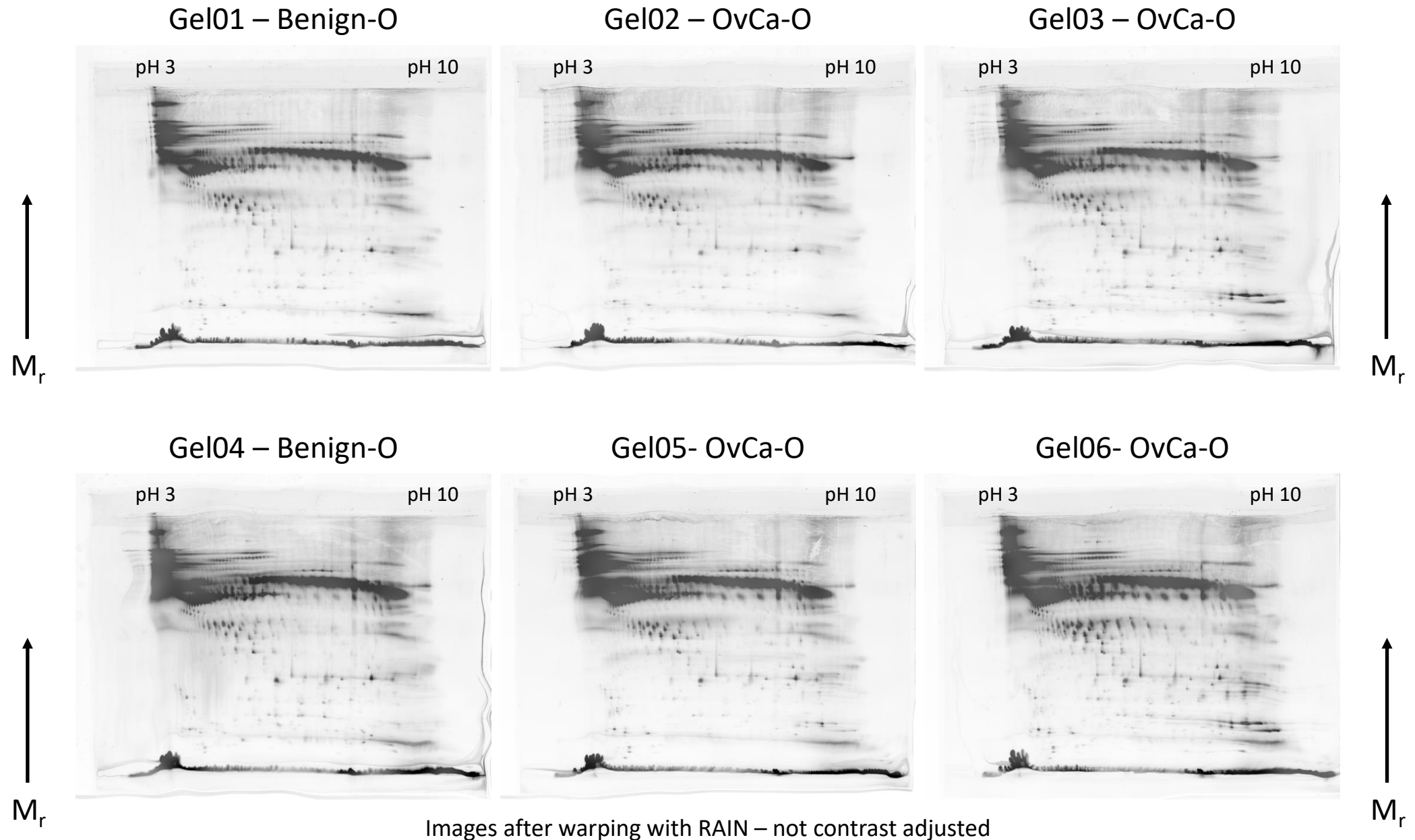
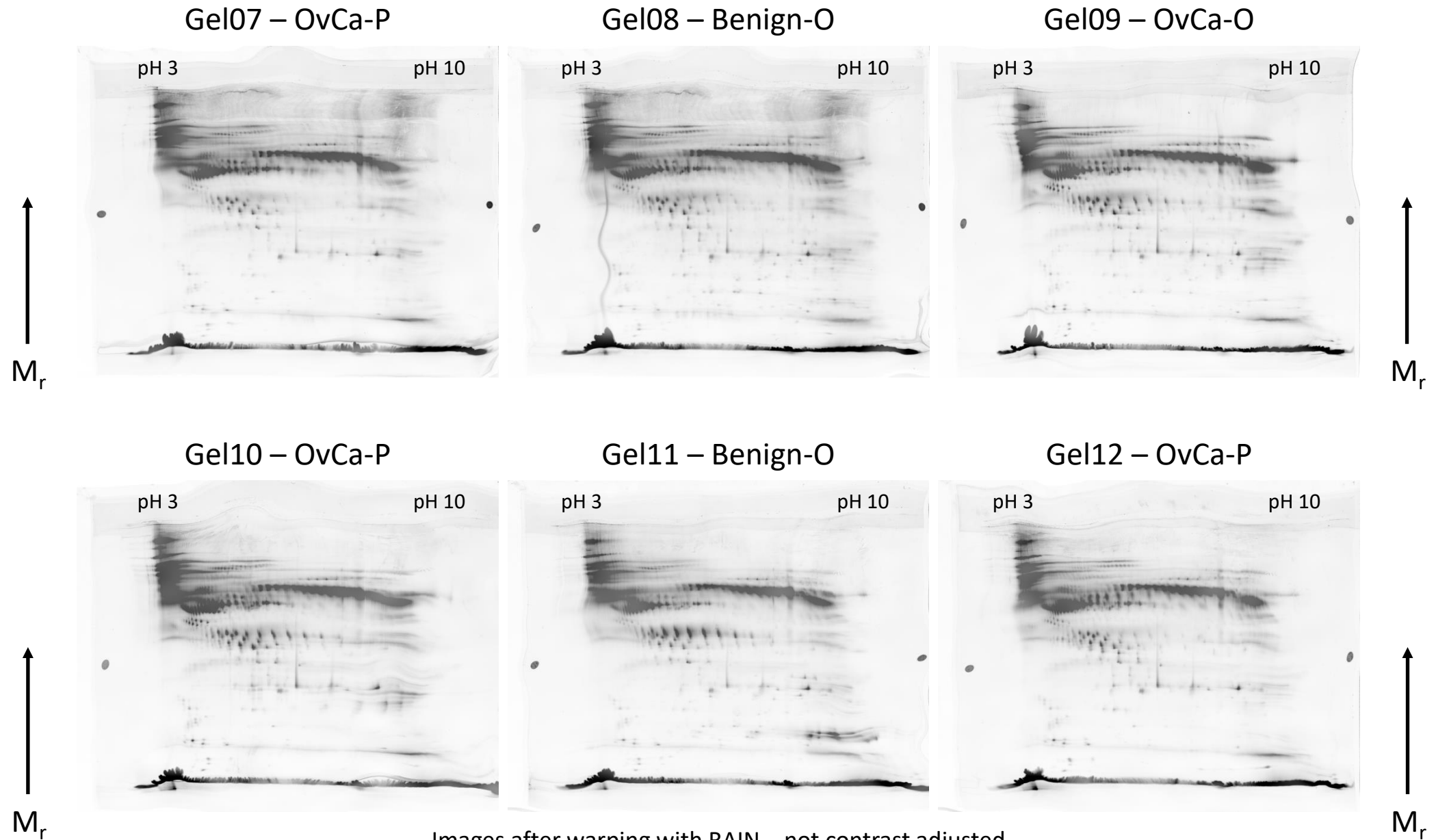


Supplementary Figure S1: Saturation labelling DIGE of serum samples – IPG 3-10NL, 24 cm, 5 μ g protein load, SDS-PAGE: T=12.5%, S-200 channel.
-O: Ovarian serum; -P: Peripheral serum. OvCa: Ovarian cancer



Images after warping with RAIN – not contrast adjusted

Supplementary Figure S1: Saturation labelling DIGE of serum samples – IPG 3-10NL, 24 cm, 5 μ g protein load, SDS-PAGE: T=12.5%, S-200 channel.
-O: Ovarian serum; -P: Peripheral serum. OvCa: Ovarian cancer



Images after warping with RAIN – not contrast adjusted

Supplementary Figure S1: Saturation labelling DIGE of serum samples – IPG 3-10NL, 24 cm, 5 μ g protein load, SDS-PAGE: T=12.5%, S-200 channel.
-O: Ovarian serum; -P: Peripheral serum. OvCa: Ovarian cancer

