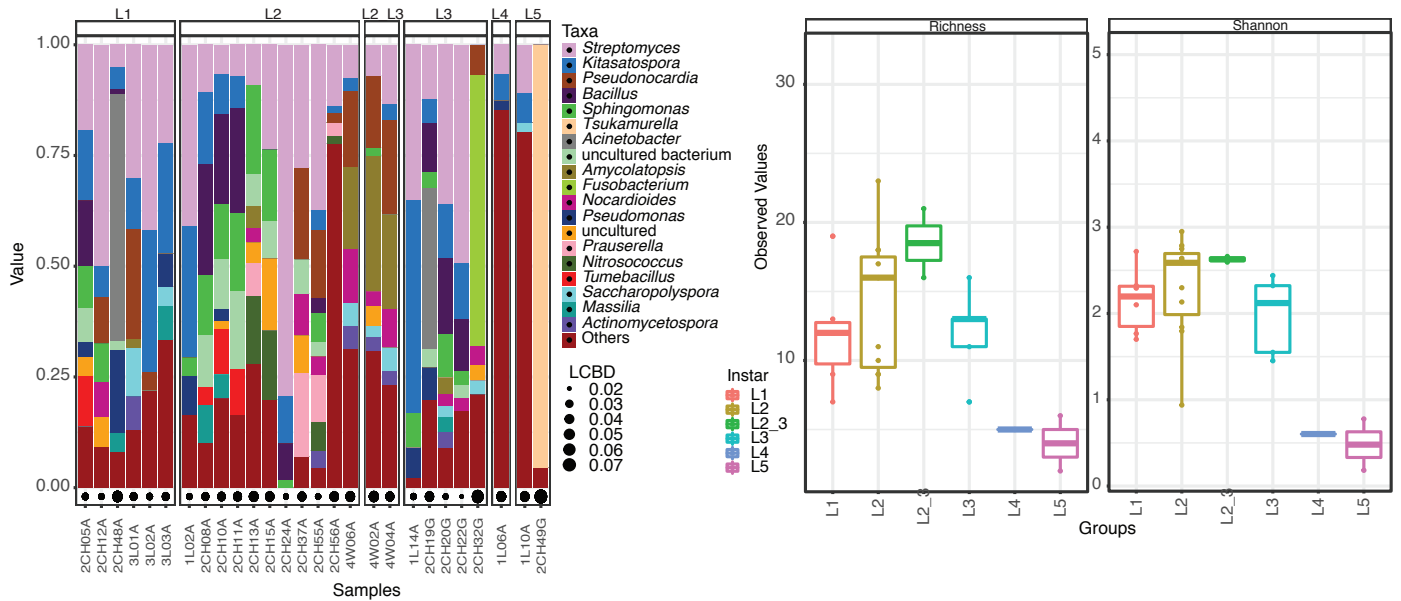
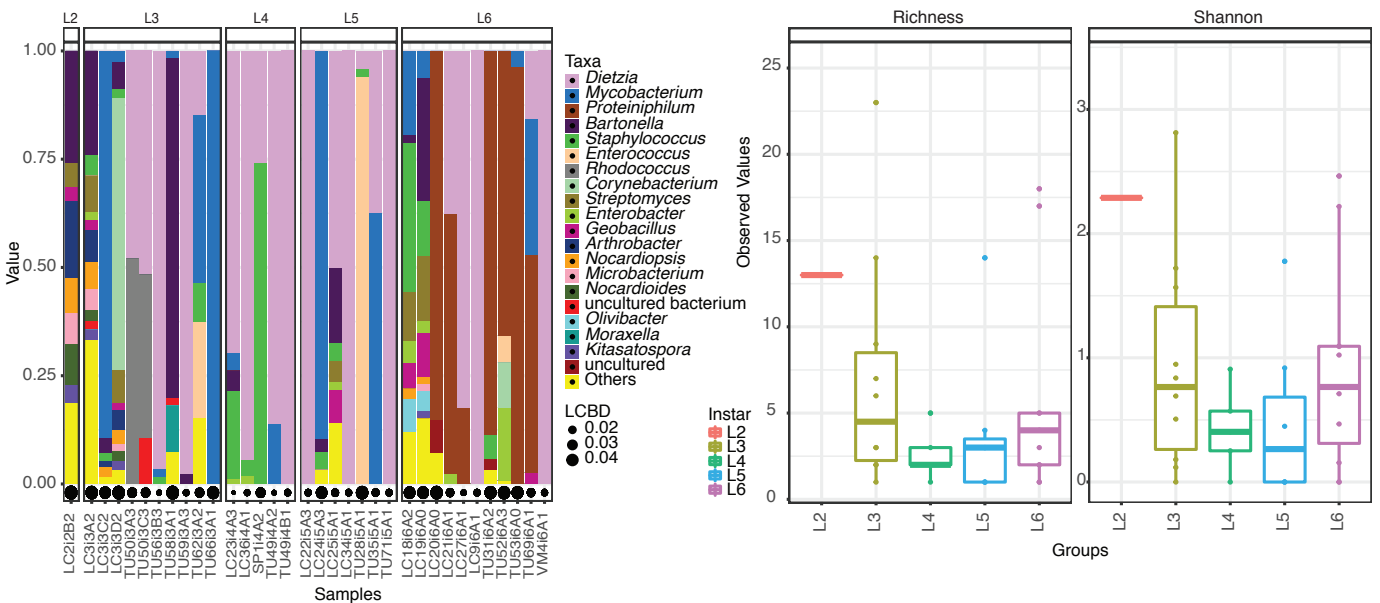


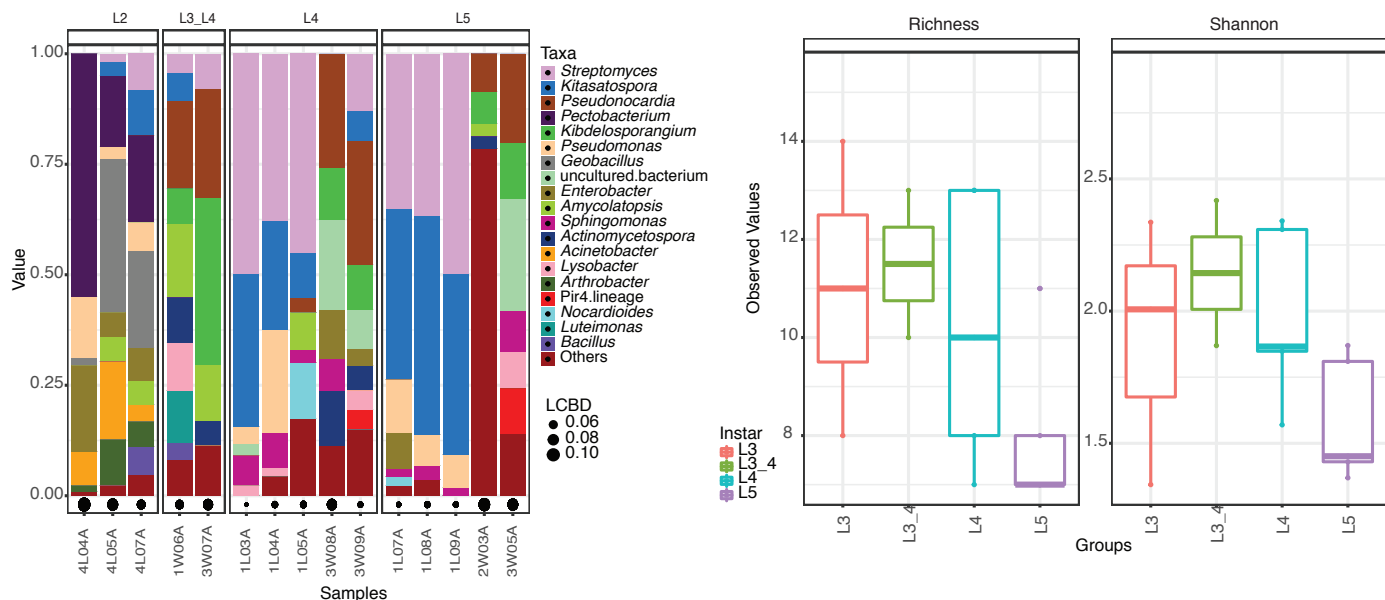
Additional File 5: Microbiome ontogenetic shift in other *Triatoma* sp.



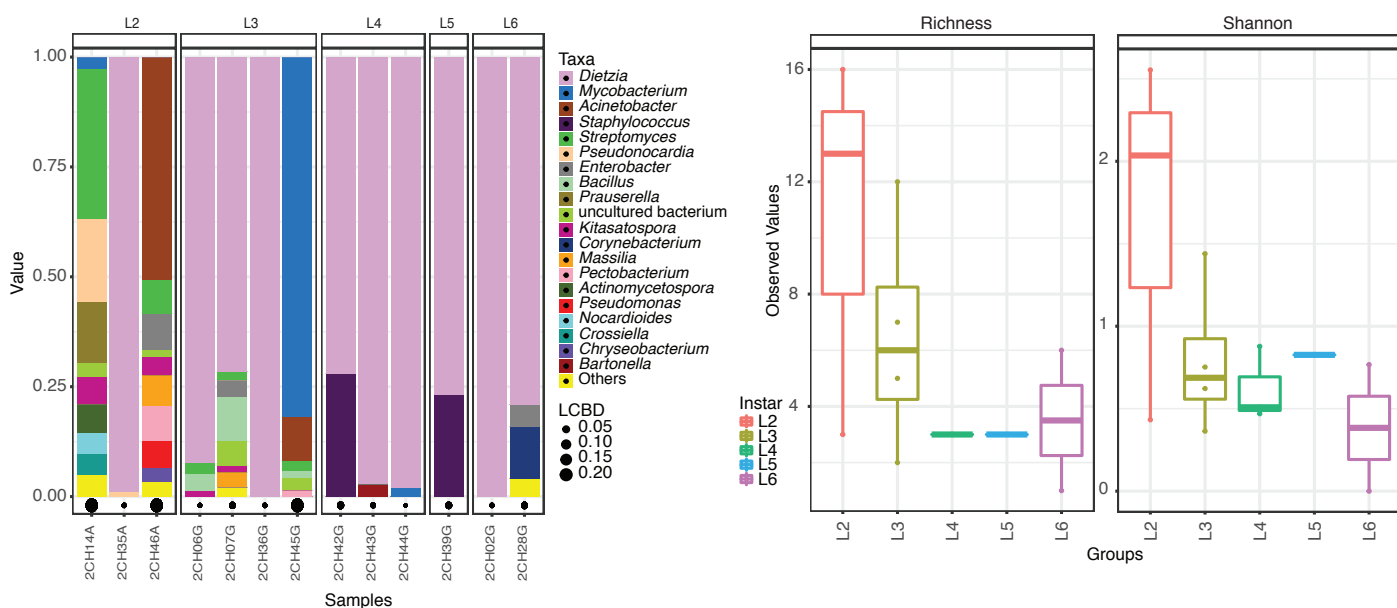
A (Supplementing Figure 1B): Microbiome profiles (top 20 bacterial genera) and diversity indices for the ontogenetic range of *Triatoma gerstaeckeri* based on the 'ultraclean' dataset.



B (Supplementing Figure 1B): Microbiome profiles (top 20 bacterial genera) and diversity indices for the available ontogenetic range of *Triatoma protracta* based on the 'ultraclean' dataset. Pink denotes *Dietzia* which displays a similar cumulative pattern to *T. rubida* discussed in the main manuscript.



C (Supplementing Figure 1B): Microbiome profiles (top 20 bacterial genera) and diversity indices for the available ontogenetic range of *Triatoma sanguisuga* based on the 'ultraclean' dataset.



D (Supplementing Figure 1B): Microbiome profiles (top 20 bacterial genera) and diversity indices for the available ontogenetic range of *Triatoma lecticularia* based on the 'ultraclean' dataset. *T. lecticularia* is the third (after *T. rubida* and *T. protracta*) of our study species to display a similar pattern of *Dietzia* over ontogenetic development.