

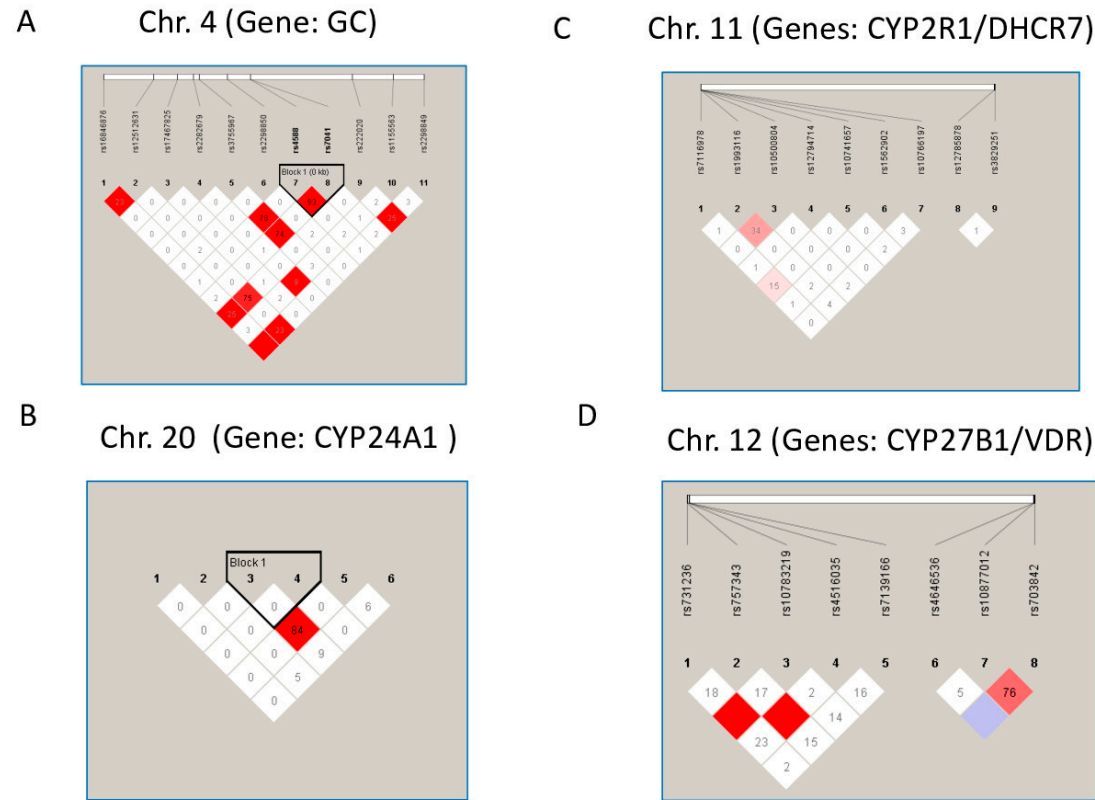
**Supplementary Table 1. SNPs ID and related sequences.**

Target Name	Sequence
rs2298849	ATTCTTTAATGTTTCAAGGGACATCTGCATTTATCCTGCTTTGTAAAATTAAGGTTTTCATTTAGTGCTGTGTCAGTTAACA GCCTCACCTAATTCGTACA[C/T]TATTATTCATAATAGTAATGTGTTTTGCCAGTGGAATAAAATGTGTGTTCCCAAGAAT TATCAGTTATTAACGTAAACATGAATAACCTTACTCTTGACT
rs12512631	TACTACTATTGTTAATTGCAAAC TAGAATTTCCAGAATGCTTTAGCTATGAACTAGTAGCCTTGTGGTGGTGGTTGTC ATGGAAGAAACAATTAGATG[C/T]TTTCTTGGCCTAATAGAGAGAAAAGAATATTTACAGTCTGGAAAAATGGACA AGGATAAAATAGCCTCTGGGAAAGAGAATCTTTTGACCTGATTATC
rs16846876	TTTTCGTTTGTGGATTTTGTGTATTTTCGCAACTTAAATGCCTTGTGAGTTTGAATTGTAATATATTATCCCTACCTG CACATGCTGTGAACTTT[A/T]TTCATGATGCTTTTGTGAACAGAACTCTAAACTTGATAATAAAATTTMATCAATATT TTGCCATTGATTTGCCTCTTGAATTTTCTTAGGTAGG
rs17467825	AAATGGAACAAATGACATCATTATGCATATTAGATCTAACATTA AAAACTCTTTACTAAAATTACAATATTTCTGTCAGCG ATTCTTAATAAAGAAAA[A/G]TGGTGAAATGTGTTAGAGTGTGCTGGAAAATATATCCATGGGAACTATGAAAACC CTACTTCAGTGAATTGTATATTTATTGACTACTTTGTGACA AWA
rs3755967	TGATGAAGGCCTACCAATGTTCAATTATTT CAGGAATAGTTACATGGCTTTGAAAAAGCAAATTATACCTTGTTCACAAA GTTATAGGTCTGAGGTACTT[A/G]ATATCCAGAAATAATGAGACCACAACCTTACCCTTATCTTAGGTTTCCAGAACAC AACCAACTCATTGCAGTTCCTGGGTTCCAGGGAGAATTTGTAG
rs2298850	AAAAGACCCATTTGCCTACAGAAAAACCTATAGTTACAAAATTAGACTTGAAATCTTCTTTCTCTTCTACCATCATTCA GGCAGGGCATCCCTTTGGG[C/G]TCTTCTGAGAACTACTACTATGCTTCTTTAAAATGTTTCAACAGACTGCTAGTGA GCATCAGATATGATTTCCCAAAGTATCCAAAAGTCATTGTAA
rs731236	GGTGGGATTGAGCAGTGAGGKGCCAGCTGAGAGCTCCTGTGCCTTCTTCTATCCCCGTGCCACAGATCGTCTGG GRTGCAGGACGCCGCTGAT[C/T]GWGGCCATCCAGGACCGCTGTCCAACACACTGCAGACGTACATCCGSTGCCG CCACCCGCCCGGGCAGCCACCTGCTCTATGCCAAGATGATCCAGA
rs10783219	TGCCTACCTTGCCTTCTGGCTGCTTACCTGCTTTACAGCCAGACTTTCTGTGGGATAGTGTGGTCCCCAGAGGTCTGG GAAGCTGGATGAGCAAAATG[A/T]GGAGGCTGTAGATATGGAGGAAGAGGGGAAGAGGAAACGTGAGGCCAGTCTT GGCTCCACTATGAACCCCAATTTCCCAGGGGAAGCTGAAGAGGAGTT
rs7139166	AGAAACAGATGAAGTGCCCTTTAGAGGTCTGCCAGTCTGATGGATGGATTCTCTACCTGTAATGAAAGTAATAGGA AGGATCCCTTGGCCAAAGCAT[C/G]GTGGGAAAGCTAGCGGTGATTCTTGTGGGAAGAAAAGCATAAGAGGAAATTT CCAACCAACATACCTTGGGACATTCTCTGCAAGTCCCATGAGCCTCT
rs4516035	GGAGAATGTATAAATAAATAGTAATTACAACATAATCTTCTGGAATAGAAATGCTCACAAAATCATCCAGCAGTCGATG ACCTCTTTAGCCAGGGAAGA[C/T]ATTGCTATTCGCTCTTACAGAGGAGGAAACCATGGCTCAGAGGGACAAGGTG AAAGGGTGGGAAATTGAGGCATAGAAAGTTAAGTGATATGCCAAC
rs757343	AGGTTTCTTGCGGGCAGGGTACAAAACCTTGGAGCCTGAGAGATGTTTCTGCCTATATAGTTTACCTGATTGATTTTGG AGGCAATGTGCAGTGACCTT[A/G]ACCTCTCCGCTGGTTAGAGGTGAGAAGAGGGAGAAAAGGCCGAAGAGGAAAG TTATTGTGACCTTGGGACATGATGTCGGTGATGAGGTCCAAAGAGGG
rs703842	AAGAATACAAGATCCCGTCTCCAGGCAGTGACCTCCAAACCAGCCTGCCTGGTCACTGACTGCTTACTCTACCTTAGC TGGACCTCGTCTCCAGGGA[C/T]TAGAGAAAAGAGCAGGAGTCTGGGTCTCCAGTTGAGACTGCTGGAGCTGAG ACACAGTACTCTTAAAGAAGGTGGGGAGCTGCCAGGGCAGAAC
rs4646536	CAGGGAGATAGCAGAGAAAAATGGCCCTCTACTCCTGGCCAAAAGGGTTTTGGAAGTTGAAACAATGAGAAGGGGG CTGCAGCCCTAGCCTCATCTTG[C/T]TGTCTCATTGTTGTGCTTTGCAACCTAGACTGTACYCTGTGGTACCTGGA AATT CTSRGTGCCAGACAAAGACATTCATGTGGGTGACTATATTATCCC
rs10877012	AGCCCGGGAGGTCAAGGCTGCAGTGAGTTATGATTGTACCACTGCACTCCAGCCTAGGCAACAGAGAGAGGGCCTGTC TCTAAAAAAATTAATAAATAAA[A/G]AATCTCCACAGTTTACTCTCTGCTCTTACTCCCTCATTCCCCTGCAACTCT ATCAGGCTCTGTGCCAGTCAGCTAGCTCTGAAGTTCTGGAATTG
rs1562902	CTACAAGTGTGCATAACATAGGAAATGTGATCAGTCTTGGAGGTGAGTAATTGATGCTGCACAAAACAACCACTTAT ATCCAGGGACTCCCCATGAT[C/T]GTGTTTATGGAAGATGTTACTACAATTCTTCCCTATCAACTGGTCTCATATGGAC ACTGAGTGAAGGGAAAGGAAAGTAACAAAATCTCTRTTAAAAT
rs10500804	CATGGCACTATTTAACACTATCTTGAACCAGAAACATTCATATTTCTTGTCTTCTGCCTGCATGCTAAAATTACAAACTCCTT AGGAGCAGTGATTTATC[C/G]TTTTTCTTTGAACTCTTACACAGAATCTCATTGCTGCTGTGCATAAAGTTCTCAAT AAATGCTGTA AAAATAAATAACGCTGTCAATTCTACTT

rs10741657	AGAGCAATGACATGGAAATACAATAATTTTCAATAATCAGAAGCAAACAAAAAGTGC GTTATAGAAAACGCCTGGTGG TTGGGGAGATACTTTAGCAGGC[A/G]AGGGCTGTCAAGGAAAGTCTTATTAGGAAGATGACATTGGAGCTGAGATCAA CTGCTAAAGAAGTGATTTGTTTCTACTACTGTTGTAATAAATTACC
rs10766197	AATAGCAGTCCCTTAATAGAAGGCTTTTGGCTGTCTCCTTCAAAAACCATAATCTCTGTACAATTTGGAACACTCCAGTT AATTAGAGATCTTTAAACT[A/G]TGCCAAGATACAGAAAGGACCAAGCTTTAAAAAATATTGTCTCCACATGGATTGG TCTAAAAGCAGTATTTAACCTAAGCTYTGAATACAGTTTTAC
rs12794714	AGCCCGGGCCAGCCTGGCGGCCCTCCCTGCCCGGGGCCGTCGGGGCTGTACCTCTCCGTACACCTGGCTCTGCTTTCT CATGTAGACATGGGGAAAGCTC[A/G]GATGAGGCTGCCAGGGAATAGATGTTGCCGATAAATGGCAGCCCCGGCGGCC CCGGGGGGAAGCCCATCGGCCCTCTGCTTCAGCAGCTGGCGGACCC
rs7116978	TTAAAATTATTTTCATAGTTGTATAGTCTTATTCACITTAATTTTTAAATAAAATTCATTTAAGTGCTTAAGTACCTTTTAT AGGTAAAAGATTATCTAA[C/T]ACAATACTTTGAATGTGATTCTTAAAGACTTCTATTTTGAAGTCTCTCAAAAAAATG CCATATGAATGGGGCTCTAGACTTCTATTAAGTTTCAATC
rs1993116	TTATTGAGAACTTTATGCACAGCACTGAATGAGATTCTGTGTAAGGATTCAAAGATGAAAAMGATGAAATCACTGCTCC TAAGGAGTTTGTAATTTAGCA[C/T]GCAGGCAGAAAGACAAGAATGAATGTTTCTGGTTCAAGATAGTGTAAATAAG TGCCATGGGAGCTTCAAGCTCCCATGTGTGGTTCAAAGCAGAGAG
rs3829251	TGTGCTCACCAGGTTGTGCAGCAGTCCCTGGGAGTTGGCTGCAGGCTGGCTCCTACCCCTCTCCTTTCTCTCCCTGC CCTACTGCCTCTCCACGG[A/G]CAGTTCTCTATGTGAGGACAGTGAAGGAGGGCACCTTTCCRGAGAAGRAAGACT GGGTCTACTAGAAATTTCCATCCATAATGGCTCCTAGGAGAAA
rs12785878	TGTTCTTAAATTTGTCTTCAATTTGATTGATTCTTTAAGAAATCTTTCACCTAAGTGCCAAGGGATCTAGGGTTCTGGGCTG TCTGATATCACAAAGCTT[G/T]ATCCTCTCCTGGCCCGTGCCGGATCTTCTCCTGGGCTGGACTCAAGGCTGATCG TCTCGTGAGCCTGACCTCTCTGGGCTGGTCCGGGGCCTGAT
rs11234027	CTGGTGACATGTTGCTGTATTCTTGGGTGAGAATGCTRAGGACATGCTGCTGTATTCTTGGGCGAGTACATTGGTGACA TGCTGCTGTGTTCTTAGTGA[A/G]TACACTGGTGAACAATGCCAATCKCACGGCCAAGAGWTTTGAGGAGCAGGG ACATCTGGTAAGCAGACTTCAGTTTCTTTTCAGTAATGTGCCCTCT
rs2244719	AAGCCATTACCAGAGGAAGAGAAGGGAAGGGAATAATTATGTTCTAAACACCCATTACACGCCAGGTAAGTGGGCTAG CACTTCATATAGGGTTTTTTTT[C/T]CTTCCATTTTCATTTTATTTAGAAGGAACCTTTTTACAAAATAAAATTTCTCAACTC TTCATTTCAAAACTTTTTACCTAGAGAAAAGTTGAAGGAATGG
rs2296241	ACGACAACCTACTTTCAAACGACCATTTGTTTCAGTTCCGTGTACAAGTCTTCAACGTGGCCTCTTTTCATCACAGAGCTCAT CTATTTGCCATAAAATC[A/G]GCCAAGACCTTCAAAGAAAACAACCGCAAAGACACATTTTAAAGCCGTTGAAGGA AAACAAAACCTTAAAGCTCACTGAGCTAACTTCAGGTCTTGCTA
rs2426496	GCTTGGGCTGAAACCATGGCTCCACCCTCATTAGCTGTGTGATCTTGGGCAAGTTATTTAACTTCTCTGAGTCTAGTTT CCTTAATGGTAAAATTGGAG[G/T]TACTATACCTGTGTCTCAGGAAGGTCAAGATAAATACTAAAAATATTAGACAAA ACACGATTGTCTTCACTAAAATCTGTTTGGCCTCTGACTTGCTT
rs4809960	GGCATAACTTAAGCACCTAAAAGAAGCATTAAAAGGGCTGCTCTGGCCTTTCCTAGGCAGCAATAATGCCTGTTTACA AAAGAGTTGTCAAAGAGCCA[C/T]GTTTTATCCGCAAATCACCTGCAAATCAGTGAGCAAGTCTGTGACGACAACCT TACTTTCAAACGACCATTTGTTTCAGTTCCGTGTACAAGTCTTCAAC
rs4588	AAATTTGTATAAAATAAATACATGTAGTAAGACCTTACATTTAAATGGTTTTTCAGACTGGCAGAGCGACTAAAAGCAA AATTGCCTGAKGCCACACCCA[A/C]GGAAGTGGCAAAGCTGGTTAAACAAGCACTCAGACTTTGCCTCAAAGTCTGCTTCC ATAAACTCACCTCTTACTGTGATTAGAGGTAGGAAAATGT
rs17219315	TTAGCATCAGAATATTTGGGATAAAATAGTGATCATCTTTTGACAATAGTTTGACAATAGGATGAAAAAGCACCTTTCTC CTAGTCAAAGATTGCACCA[A/G]AAAGTTGAAGTCCAGATAATTTGGGTTGAGGGATTTTGGAGTGTCTTGCAGGGA GTGGGGCTGGGAGGCCTGGGACAATTCCTAGCGGTAAAAGGGGG
rs6013897	CTCTGCCACTTACCTACTGTGTATCTTTGGGTAGGTTACTTCTGCCTCTGTCTTGGTTTCTCATCTGTAAAAGGGGGATA ATGAAAGTACCTACTTCAAG[A/T]GGATGATTACACTTCTTACATGCATTTACGAGTTTTCTGAACATATAATCTGTG AGATCCATGTGGACTTGATGATTCTAATTTTGTGATGCAT
rs7041	TTTTGCATTAGAAATTTGTATAAAATAAATACATGTAGTAAGACCTTACATTTAAATGGTTTTTCAGACTGGCAGAGCGA CTAAAAGCAAAATTGCCTGA[G/T]GCCACACCCAMGGAAGTGGCAAAGCTGGTTAAACAAGCACTCAGACTTTGCCTCC AACTGCTGTTCCATAAACTCACCTCTTACTGTGATTAGAGG
rs229624	CATGCCTCCTCTCATGTCGTTGATGTACCAGGCCACACAGGTCATGGTGTCAATGGCATCCTCCACCACCTCAAACCCA TCCTCTTCTCATCAAATG[C/T]TTGGCAATTTCTGCGCAGAAGATAGACGCTTAGGTGCCCTGACCCGAAGGCCCT GCCCTCCCAGGCCCTAGGTGCTTGGGAGGACCGAGGGGCTACC

rs222020	GAATAACAAGGGAGAGAGATCACAGAAGAACACAGTAAGAGAAAACGGCAGCTTTACACATCTTGGTAACCAGAGGA GACAACCTTGGCTCACCATGCTG[C/T]CCATTGAATTTTTGNCCATTGAGTTGAGTTTTCTGCTGCTATCTCTTACT AGCTTCTCCTTTCCTGTGTTAGCCCTGGAGGAGGTAGAAGCAGCC
rs2882679	TGATTTAGGACCATACCACGGAGAGACACAAAGTGGTACCAGAGACCAGCTCATTAAGTTTACCATATACTATGGT AATTTGTTTTAAAAGATATT[C/T]TAAAACAGGTAAGTCAAAGTTTCACATATGGAAATATGTCCAAATTTAAATGTGC TTGTCTCCTGAAGAGTCTGGGTCATTCATTAATAAAAAAAAAAAAAA
rs1155563	GAACTGATAATATCAAATAACAAATTTACTTTTCGTGTAGTAAAATTTGAAGACTGAAATGGTTATTCTAAGACTGTGCT CTTGCTATTGTANTTTTTAA[C/T]AGATAAAAAATCACAGTTATTTCCATATAAAAAATTTTTCACTCATAAATGGGAGT CGAACAGTGAGAACACATRGACACAGGGAGGGGAACATCACAC
rs2282679	TTCTGACCTTGTGATCCACCCACCTCGGCCTCCCAAAGTGCTGGGATTACAGGCCTGAGCCACCATGCCAGCAAATCT CTGTCTCTAATTATCTACA[A/C]AGCCAGGTATTTTTATTGTTAGCTTTGGAAGCAAGTAGTAGTCCCTCTGGGTTGC CAAAAACATAAATGAATTGGCTCACAGTGTAGAATCAGATTGGG

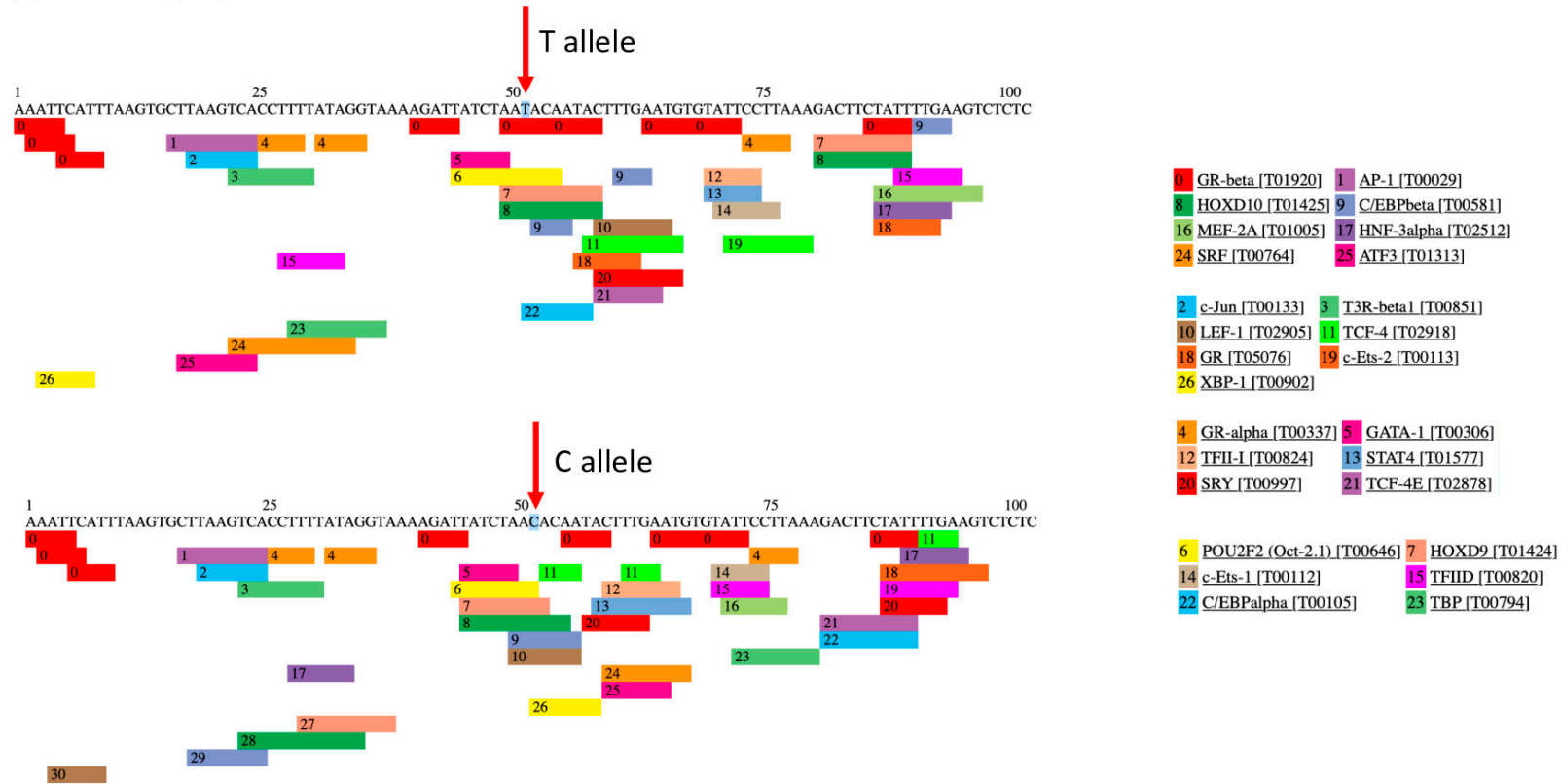
Supplementary Fig. 1



**Supplementary Fig. 1.**  $D'$  pairwise linkage disequilibrium (LD) plots of analyzed polymorphisms in Chromosomes 4, 11, 20 and 12. The red shaded boxes correspond to the paired  $D'$  values between the SNPs.

**Supplementary Fig. 1.**  $D'$  pairwise linkage disequilibrium (LD) plots of analyzed polymorphisms in Chromosomes 4, 11, 20 and 12. The red shaded boxes correspond to the paired  $D'$  values between the SNPs.

Supplementary Fig. 2



**Supplementary Fig. 2.** Transcription Factor Binding Sites Prediction for intronic SNP rs7116978 (PROMO, [http://algggen.lsi.upc.es/cgi-bin/promo\\_v3/promo/promoinit.cgi?dirDB=TF\\_8.3](http://algggen.lsi.upc.es/cgi-bin/promo_v3/promo/promoinit.cgi?dirDB=TF_8.3)). The red arrows indicate the two different alleles of the SNP. Transcription factors are represented in different colors

**Supplementary Fig. 2.** Transcription Factor Binding Sites Prediction for intronic SNP rs7116978 (PROMO, [http://algggen.lsi.upc.es/cgi-bin/promo\\_v3/promo/promoinit.cgi?dirDB=TF\\_8.3](http://algggen.lsi.upc.es/cgi-bin/promo_v3/promo/promoinit.cgi?dirDB=TF_8.3)). The red arrows indicate the two different alleles of the SNP. Transcription factors are represented in different color

