

An optimized desuccinylase activity assay reveals a difference in desuccinylation activity between proliferative and differentiated cells

Taolin Yuan¹, Jaap Keijer¹, Angela H. Guo², David B. Lombard², Vincent C. J. de Boer^{1,*}

¹Human and Animal Physiology, Wageningen University & Research, Wageningen, 6708WD, the Netherlands. ² Department of Pathology, University of Michigan, Ann Arbor MI 48109. USA.

***Correspondence**

Vincent C.J. de Boer, PhD

Human and Animal Physiology

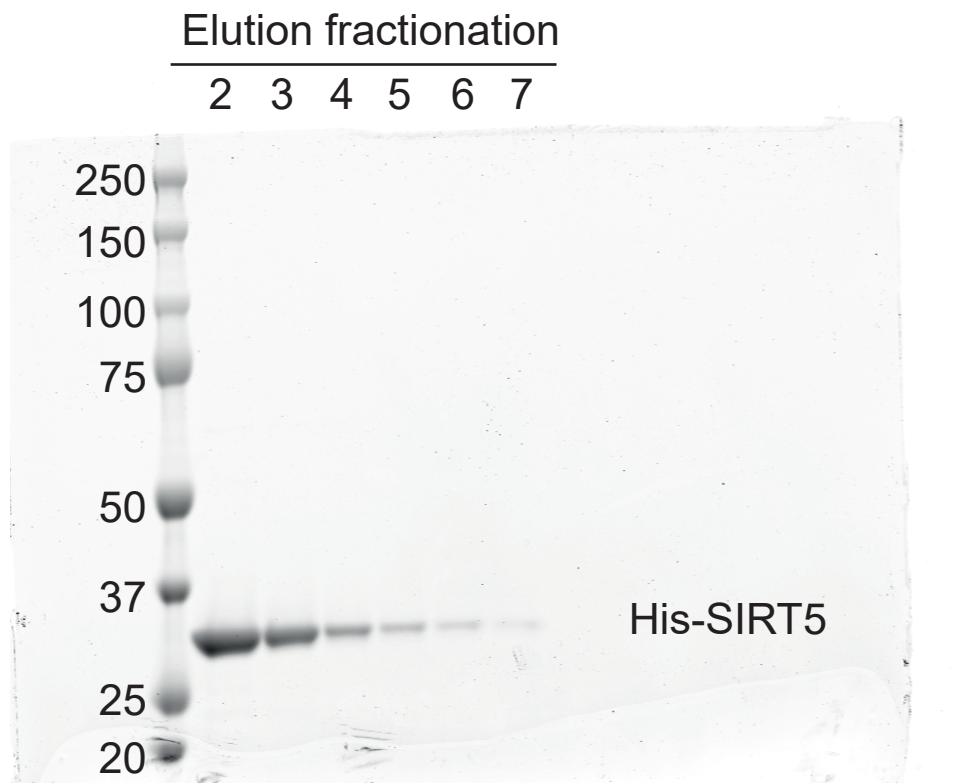
Wageningen University & Research

De Elst 1, 6708 WD Wageningen

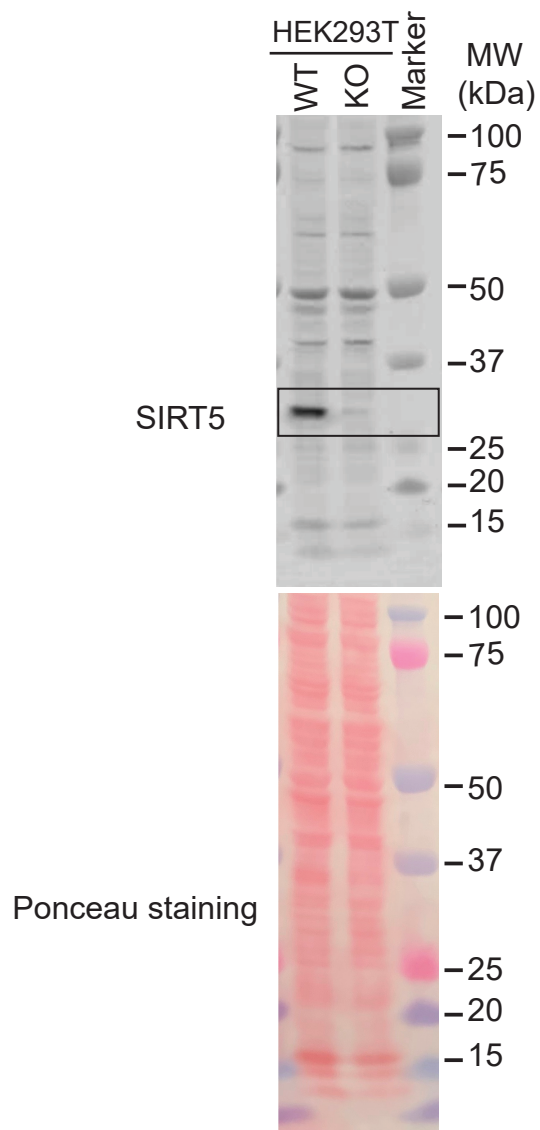
The Netherlands

+31 317 484699

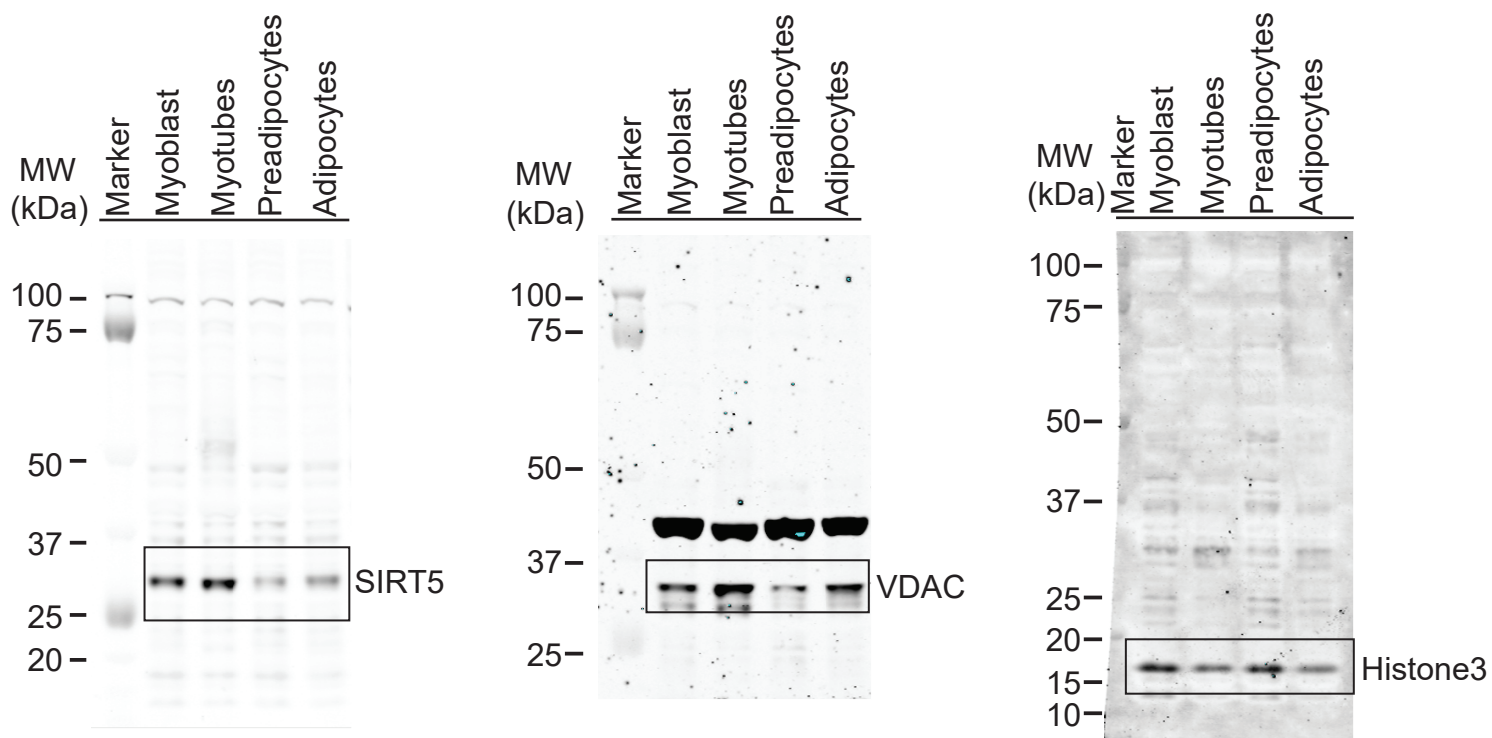
Vincent.deboer@wur.nl



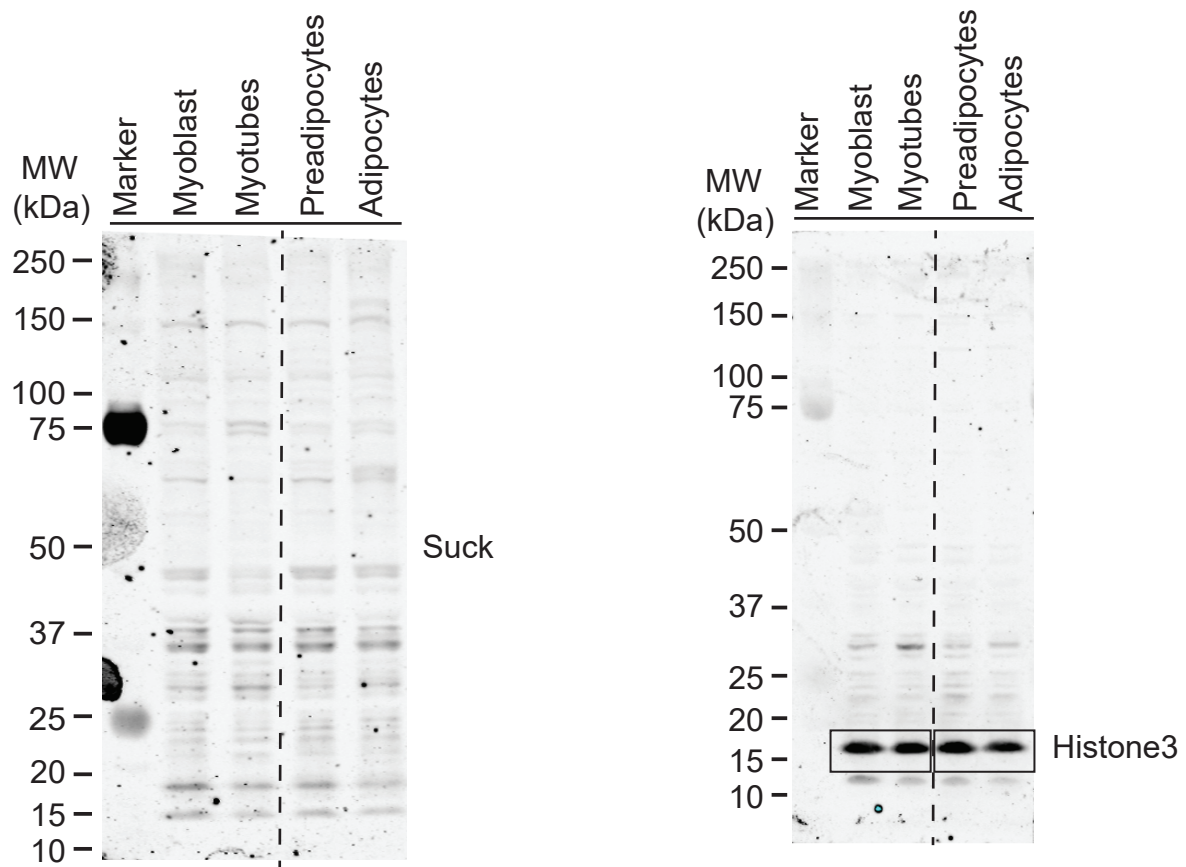
Supplementary Figure 1 Gel electrophoresis result of elution fractionation of His-SIRT5. The elution fractionation 1 was not loaded on gel due to high salt content in the sample.



Supplementary Figure 2 Full-length blots for cropped blots shown in Fig. 1e. Ponceua staining shows the equal loading.



Supplementary Figure 3 Full-length blots for cropped blots shown in Fig. 5a.



Supplementary Figure 4 Full-length blots of cropped blots shown in Fig. 5b and Fig. 5c. Blot was cropped along the black dash line. Left side of dash line was shown in Fig. 5b, and right side of dash line was shown in Fig. 5c.