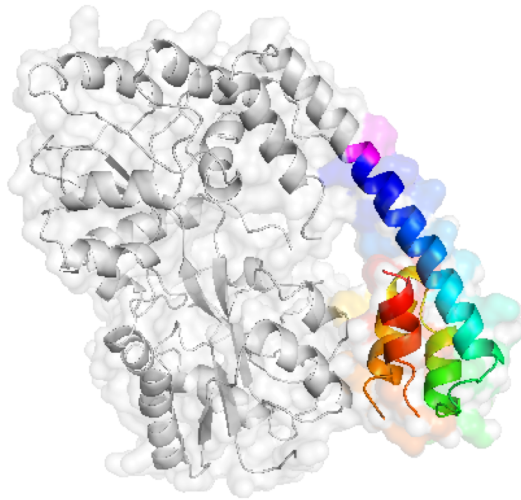
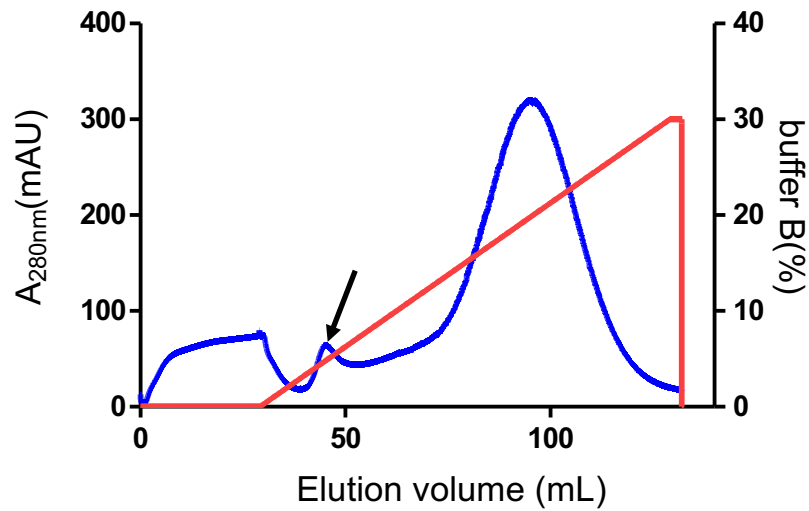


Supplementary Fig. S1. RT-PCR detect the mRNA level of caspase-4 in HEK293T cells.



Supplementary Fig. S2. Cartoon diagram of caspase11-CARD with the MBP fusion protein in structure. Related to Figure 1. Cartoon diagram of caspase-11 CARD was shown with N-terminal blue to C-terminal red for chain C and MBP fusion protein in gray. The linker between CARD and MBP fusion protein was shown in rose red



Supplementary Fig. S3. 2nd Nickel purification analysis of VLLV-CARD in liquid without MBP fusion protein

TEV enzyme was used to remove MBP fusion protein on N-terminal side of VLLV-CARD^{aa11-101} protein. The arrow showed the VLLV-CARD^{aa11-101} protein while 2nd Nickel purification.