

**Supplemental Table 1.** Summary of select tumor/disease characteristics. Analysis based on a cohort of men and women with invasive breast cancer from the National Cancer Data Base (2004-2015). Data presented as N (%). ER: estrogen receptor. PR: progesterone receptor. HER2: human epidermal growth factor receptor 2.

	<b>All Patients N=1,664,746 100.0%</b>	<b>Female N=1,648,070 99.0%</b>	<b>Male N=16,676 1.0%</b>	<b>P-Value</b>
<b>ER Status</b>				<0.0001
ER+	1292947 (80%)	1278261 (79.9%)	14,686 (92.1%)	
ER-	322,299 (20%)	321,042 (20.1%)	1,257 (7.9%)	
<b>PR Status</b>				<0.0001
PR+	1118217 (69.6%)	1105028 (69.5%)	13,189 (83.3%)	
PR-	488,520 (30.4%)	485,883 (30.5%)	2,637 (16.7%)	
<b>HER2 Status</b>				<0.0001
HER2+	130,223 (14.8%)	129,119 (14.8%)	1,104 (12.5%)	
HER2-	750,161 (85.2%)	742,419 (85.2%)	7,742 (87.5%)	
<b>Clinical T Stage</b>				
T1	774,712 (61.8%)	768,621 (61.9%)	6,091 (50.1%)	<0.0001
T2	344,836 (27.5%)	340,274 (27.4%)	4,562 (37.5%)	
T3	70,249 (5.6%)	69,749 (5.6%)	500 (4.1%)	
T4	63,638 (5.1%)	62,623 (5%)	1,015 (8.3%)	
<b>Clinical N Stage</b>				
N0	1010729 (80.3%)	1001489 (80.4%)	9,240 (76%)	<0.0001
N1	185,275 (14.7%)	183,111 (14.7%)	2,164 (17.8%)	
N2	38,893 (3.1%)	38,392 (3.1%)	501 (4.1%)	
N3	23,505 (1.9%)	23,252 (1.9%)	253 (2.1%)	
<b>Pathological T Stage</b>				
T1	832,512 (64.5%)	825,938 (64.7%)	6,574 (50.5%)	<0.0001
T2	349,091 (27.1%)	343,981 (26.9%)	5,110 (39.3%)	
T3	55,850 (4.3%)	55,453 (4.3%)	397 (3.1%)	
T4	27,790 (2.2%)	26,949 (2.1%)	841 (6.5%)	
T0	24,548 (1.9%)	24,461 (1.9%)	87 (0.7%)	
<b>Pathological N Stage</b>				
N0	862,553 (69.4%)	855,531 (69.6%)	7,022 (56.3%)	<0.0001
N1	261,563 (21.1%)	257,981 (21%)	3,582 (28.7%)	
N2	78,373 (6.3%)	77,119 (6.3%)	1,254 (10.1%)	
N3	39,592 (3.2%)	38,978 (3.2%)	614 (4.9%)	

\*Frequency may not add up to total because of missing values. Percentages are of the total reported and are based on the non-missing cohort of each variable.

**Supplemental Table 2.** Summary of select patient demographics, tumor/disease characteristics, and treatments for NSABP-B06 eligible patients. Analysis based on a cohort of men and women with invasive breast cancer from the National Cancer Data Base (2004-2015). Data presented as N (%) or Median (IQR). IQR: interquartile range. ER: estrogen receptor. PR: progesterone receptor. HER2: human epidermal growth factor receptor 2. HR: hormone receptor. TNBC: triple negative breast cancer.

	All Patients	Female	Male	P-Value
	N=716,928 (100%)	N=709,818 (99.0%)	N=7,110 (1.0%)	
Follow-up (months)				<0.001
Median (IQR)	58.9 (36.6-83.9)	58.9 (36.6-83.9)	56.5 (34.8-81.4)	
Age				<0.001
Median (IQR)	61 (52 - 70)	61 (52 - 70)	66 (57 - 74)	
Race/Ethnicity				<0.001
Hispanic	31,412 (4.6%)	31,199 (4.6%)	213 (3.2%)	
Non-Hispanic Black	64,151 (9.4%)	63,446 (9.4%)	705 (10.5%)	
Non-Hispanic Other	26,548 (3.9%)	26,384 (3.9%)	164 (2.4%)	
Non-Hispanic White	556,815 (82%)	551,197 (82%)	5,618 (83.9%)	
Charlson/Deyo Comorbidity Score				<0.001
0	601,125 (84.3%)	595,649 (84.4%)	5,476 (77.9%)	
1	95,246 (13.4%)	93,989 (13.3%)	1,257 (17.9%)	
≥ 2	16,389 (2.3%)	16,094 (2.3%)	295 (4.2%)	
Histology				<0.001
Ductal	639,584 (89.2%)	632,716 (89.1%)	6,868 (96.6%)	
Lobular	71,001 (9.9%)	70,797 (10%)	204 (2.9%)	
Other	6,343 (0.9%)	6,305 (0.9%)	38 (0.5%)	
Tumor Size (mm)				<0.001
Median (IQR)	15 (9 - 21)	15 (9 - 21)	19 (13 - 25)	
Positive LNs				<0.001
Median (IQR)	1 (1 - 3)	1 (1 - 3)	2 (1 - 3)	
Oncotype Dx				0.11
Median (IQR)	16 (11-22)	16 (11-22)	16 (8.5 -23.5)	
Grade				<0.001
1	175,308 (25.6%)	174,233 (25.7%)	1,075 (15.7%)	
2	308,967 (45.1%)	305,418 (45%)	3,549 (51.8%)	
3	201,465 (29.4%)	199,235 (29.3%)	2,230 (32.5%)	
Molecular Subtypes by Receptors				<0.001

	All Patients	Female	Male	P-Value
	N=716,928 (100%)	N=709,818 (99.0%)	N=7,110 (1.0%)	
HER2+	53,359 (11.2%)	52,853 (11.2%)	506 (10.4%)	
HR+/HER2-	373,215 (78.5%)	369,022 (78.4%)	4,193 (86.4%)	
TNBC	48,789 (10.3%)	48,635 (10.3%)	154 (3.2%)	
Clinical T Stage				<0.001
T1	546,417 (76.2%)	542,040 (76.4%)	4,377 (61.6%)	
T2	170,511 (23.8%)	167,778 (23.6%)	2,733 (38.4%)	
Clinical N Stage				<0.001
N0	659,460 (92%)	653,319 (92%)	6,141 (86.4%)	
N1	57,468 (8%)	56,499 (8%)	969 (13.6%)	
Pathological T Stage				<0.001
T1	454,448 (72.1%)	450,818 (72.3%)	3,630 (57%)	
T2	174,289 (27.7%)	171,651 (27.5%)	2,638 (41.4%)	
T3	435 (0.1%)	430 (0.1%)	5 (0.1%)	
T4	1,043 (0.2%)	951 (0.2%)	92 (1.4%)	
Pathological N Stage				<0.001
N0	480,208 (76.4%)	476,208 (76.5%)	4,000 (63.1%)	
N1	122,534 (19.5%)	120,714 (19.4%)	1,820 (28.7%)	
N2	19,108 (3%)	18,755 (3%)	353 (5.6%)	
N3	7,065 (1.1%)	6,897 (1.1%)	168 (2.6%)	
Pathological M Stage				0.9015
M0	716,708 (100%)	709,600 (100%)	7,108 (100%)	
M1	220 (0%)	218 (0%)	2 (0%)	
Anatomic Stage Groups				<0.001
I	519,547 (72.5%)	515,588 (72.6%)	3,959 (55.7%)	
II	197,381 (27.5%)	194,230 (27.4%)	3,151 (44.3%)	
Prognostic Stage Group				<0.001
I	577,239 (90%)	572,197 (90.1%)	5,042 (83.8%)	
II	60,276 (9.4%)	59,321 (9.3%)	955 (15.9%)	
III	3,584 (0.6%)	3,563 (0.6%)	21 (0.3%)	
Breast Surgery Type				<0.001
Lumpectomy	431,112 (60.1%)	429,794 (60.5%)	1,318 (18.5%)	
Mastectomy	285,816 (39.9%)	280,024 (39.5%)	5,792 (81.5%)	
Received Any Radiation Therapy				<0.001

	All Patients	Female	Male	P-Value
	N=716,928 (100%)	N=709,818 (99.0%)	N=7,110 (1.0%)	
No	237,340 (33.2%)	232,807 (32.9%)	4,533 (64.3%)	
Yes	476,889 (66.8%)	474,369 (67.1%)	2,520 (35.7%)	
Local-Regional Therapy				<0.001
Mastectomy	237,340 (33.2%)	232,807 (32.9%)	4,533 (64.3%)	
Lumpectomy+Radiation	431,112 (60.4%)	429,794 (60.8%)	1,318 (18.7%)	
Mastectomy+Radiation	45,777 (6.4%)	44,575 (6.3%)	1,202 (17%)	
Received Any Chemotherapy				0.9839
No	427,897 (61%)	423,698 (61%)	4,199 (61%)	
Yes	273,172 (39%)	270,490 (39%)	2,682 (39%)	
Timing of Chemotherapy				0.9462
Adjuvant Chemo Only	260,193 (37.8%)	257,644 (37.8%)	2,549 (37.8%)	
No Chemo	427,897 (62.2%)	423,698 (62.2%)	4,199 (62.2%)	
Received Endocrine Therapy based on HR status				<0.001
Endocrine if HR+	473,206 (66.8%)	468,845 (66.9%)	4,361 (62.5%)	
No Endocrine if HR+	131,316 (18.5%)	129,023 (18.4%)	2,293 (32.9%)	
Endocrine if HR-	3,492 (0.5%)	3,479 (0.5%)	13 (0.2%)	
No Endocrine if HR-	100,091 (14.1%)	99,779 (14.2%)	312 (4.5%)	
Year				0.0016
2004	21,218 (3%)	21,030 (3%)	188 (2.6%)	
2005	23,347 (3.3%)	23,136 (3.3%)	211 (3%)	
2006	25,968 (3.6%)	25,709 (3.6%)	259 (3.6%)	
2007	33,524 (4.7%)	33,210 (4.7%)	314 (4.4%)	
2008	57,826 (8.1%)	57,297 (8.1%)	529 (7.4%)	
2009	68,598 (9.6%)	67,975 (9.6%)	623 (8.8%)	
2010	75,363 (10.5%)	74,629 (10.5%)	734 (10.3%)	
2011	79,082 (11%)	78,321 (11%)	761 (10.7%)	
2012	81,270 (11.3%)	80,445 (11.3%)	825 (11.6%)	
2013	84,865 (11.8%)	83,970 (11.8%)	895 (12.6%)	
2014	84,151 (11.7%)	83,279 (11.7%)	872 (12.3%)	
2015	81,716 (11.4%)	80,817 (11.4%)	899 (12.6%)	

\*Frequency may not add up to total because of missing values. Percentages are of the total reported and are based on the non-missing cohort of each variable.

**Supplemental Table 3.** Summary of select patient demographics, tumor/disease characteristics, and treatments for CALGB 9343 eligible patients. Analysis based on a cohort of men and women with invasive breast cancer from the National Cancer Data Base (2004-2015). Data presented as N (%) or Median (IQR) unless otherwise specified. IQR: interquartile range. LN: lymph node. PR: progesterone receptor. HER2: human epidermal growth factor receptor 2.

	All Patients	Female	Male	
	N=86,391 (100%)	N=86,127 (99.7%)	N=264 (0.3%)	P-Value
Follow-up (months)				
Median (IQR)	54.1 (33.8-79.1)	54.1 (33.8-79.1)	51.9 (33.2-73.8)	
Age				
Median (IQR)	75 (72 - 80)	75 (72 - 80)	75 (72 - 80)	0.79
Race/Ethnicity				
Hispanic	2,049 (2.5%)	2,043 (2.5%)	6 (2.4%)	
Non-Hispanic Black	5,000 (6.1%)	4,983 (6.1%)	17 (6.9%)	
Non-Hispanic Other	1,687 (2.1%)	1,684 (2.1%)	3 (1.2%)	
Non-Hispanic White	73,412 (89.4%)	73,193 (89.4%)	219 (89.4%)	
Charlson/Deyo Comorbidity Score				
0	68,260 (79.7%)	68,048 (79.7%)	212 (81.2%)	
1	14,614 (17.1%)	14,569 (17.1%)	45 (17.2%)	
≥ 2	2,777 (3.2%)	2,773 (3.2%)	4 (1.5%)	
Histology				
Ductal	76,095 (88.1%)	75,854 (88.1%)	241 (91.3%)	
Lobular	10,182 (11.8%)	10,159 (11.8%)	23 (8.7%)	
Other	114 (0.1%)	114 (0.1%)	0 (0%)	
Tumor Size (mm)				
Median (IQR)	12 (8 - 15)	12 (8 - 15)	12 (8 - 16)	0.57
Positive LNs				
Median (IQR)	1 (1 - 2)	1 (1 - 2)	1 (1 - 1)	0.23
Oncotype Dx Score				
Median (IQR)	15 (10-21)	15 (10-21)	16 (9-22)	0.78
Grade				
1	76,095 (88.1%)	75,854 (88.1%)	241 (91.3%)	
2	10,182 (11.8%)	10,159 (11.8%)	23 (8.7%)	
3	114 (0.1%)	114 (0.1%)	0 (0%)	
PR Status				
PR+	76,000 (88.3%)	75,760 (88.3%)	240 (90.9%)	0.18

	All Patients	Female	Male	
	N=86,391 (100%)	N=86,127 (99.7%)	N=264 (0.3%)	P-Value
PR-	10,065 (11.7%)	10,041 (11.7%)	24 (9.1%)	
HER2 Status				0.36
HER2+	3,728 (5.9%)	3,713 (5.9%)	15 (7.5%)	
HER2-	59,140 (94.1%)	58,954 (94.1%)	186 (92.5%)	
Pathological T Stage				0.67
T1	72,033 (92.9%)	71,812 (92.9%)	221 (94.8%)	
T2	5,341 (6.9%)	5,329 (6.9%)	12 (5.2%)	
T3	106 (0.1%)	106 (0.1%)	0 (0%)	
T4	41 (0.1%)	41 (0.1%)	0 (0%)	
Pathological N Stage				0.09
N0	63,643 (89.7%)	63,460 (89.8%)	183 (85.1%)	
N1	6,736 (9.5%)	6,705 (9.5%)	31 (14.4%)	
N2	424 (0.6%)	423 (0.6%)	1 (0.5%)	
N3	113 (0.2%)	113 (0.2%)	0 (0%)	
N0	63,643 (89.7%)	63,460 (89.8%)	183 (85.1%)	
Pathological M Stage				0.84
M0	86,377 (100%)	86,113 (100%)	264 (100%)	
M1	14 (0%)	14 (0%)	0 (0%)	
Had LNs Examined				0.81
Yes	75,617 (87.6%)	75,387 (87.6%)	230 (87.1%)	
No or unknown	10,694 (12.4%)	10,660 (12.4%)	34 (12.9%)	
Extent of Axillary Surgery				0.94
[1-5] LNs	65,644 (87.5%)	65,447 (87.5%)	197 (87.2%)	
[6-9] LNs	5,236 (7%)	5,219 (7%)	17 (7.5%)	
≥ 10 LNs	4,149 (5.5%)	4,137 (5.5%)	12 (5.3%)	
Received Any Radiation Therapy				0.94
No	23,717 (27.5%)	23,644 (27.5%)	73 (27.7%)	
Yes	62,674 (72.5%)	62,483 (72.5%)	191 (72.3%)	
Local-Regional Therapy				0.94
Lumpectomy	23,717 (27.5%)	23,644 (27.5%)	73 (27.7%)	
Lumpectomy+Radiation	62,674 (72.5%)	62,483 (72.5%)	191 (72.3%)	
Received Any Chemotherapy				0.006
No	79,104 (93.3%)	78,876 (93.3%)	228 (89.1%)	

	<b>All Patients</b>	<b>Female</b>	<b>Male</b>	
	<b>N=86,391</b> <b>(100%)</b>	<b>N=86,127</b> <b>(99.7%)</b>	<b>N=264</b> <b>(0.3%)</b>	<b>P-Value</b>
Yes	5,651 (6.7%)	5,623 (6.7%)	28 (10.9%)	
<b>Timing of Chemotherapy</b>				<b>0.005</b>
Adjuvant Chemo Only	5,563 (6.6%)	5,535 (6.6%)	28 (10.9%)	
No Chemo	79,104 (93.4%)	78,876 (93.4%)	228 (89.1%)	
<b>Year</b>				<b>0.37</b>
2004	1,833 (2.1%)	1,831 (2.1%)	2 (0.8%)	
2005	2,075 (2.4%)	2,068 (2.4%)	7 (2.7%)	
2006	2,424 (2.8%)	2,413 (2.8%)	11 (4.2%)	
2007	3,155 (3.7%)	3,150 (3.7%)	5 (1.9%)	
2008	5,801 (6.7%)	5,785 (6.7%)	16 (6.1%)	
2009	7,150 (8.3%)	7,130 (8.3%)	20 (7.6%)	
2010	8,196 (9.5%)	8,168 (9.5%)	28 (10.6%)	
2011	9,225 (10.7%)	9,193 (10.7%)	32 (12.1%)	
2012	10,023 (11.6%)	9,991 (11.6%)	32 (12.1%)	
2013	11,429 (13.2%)	11,403 (13.2%)	26 (9.8%)	
2014	12,236 (14.2%)	12,199 (14.2%)	37 (14%)	
2015	12,844 (14.9%)	12,796 (14.9%)	48 (18.2%)	

\*Frequency may not add up to total because of missing values. Percentages are of the total reported and are based on the non-missing cohort of each variable.

**Supplemental Table 4.** Summary of select patient demographics, tumor/disease characteristics, and treatments for ACOSOG Z011 eligible patients. Analysis based on a cohort of men and women with invasive breast cancer from the National Cancer Data Base (2004-2015). Data presented as N (%) or Median (IQR). IQR: interquartile range. HER2: human epidermal growth factor receptor 2. HR: hormone receptor. TNBC: triple negative breast cancer. LN: lymph node.

	All Patients	Female	Male	P-Value
	N=46,769 (100%)	N=46,596 (99.6%)	N=173 (0.4%)	
Follow-up (months)				
Median (IQR)	56.1 (35.1-81.6)	56.0 (35.1-81.6)	54.0 (34.5-75.9)	
Age				
Median (IQR)	61 (52 - 69)	61 (52 - 69)	61 (52 - 70)	0.82
Race/Ethnicity				
Hispanic	2,243 (5%)	2,239 (5%)	4 (2.5%)	
Non-Hispanic Black	4,563 (10.3%)	4,552 (10.3%)	11 (6.9%)	
Non-Hispanic Other	1,634 (3.7%)	1,628 (3.7%)	6 (3.8%)	
Non-Hispanic White	36,063 (81%)	35,925 (81%)	138 (86.8%)	
Charlson/Deyo Comorbidity Score				
0	39,272 (84.4%)	39,137 (84.5%)	135 (78.5%)	
1	6,093 (13.1%)	6,063 (13.1%)	30 (17.4%)	
≥ 2	1,145 (2.5%)	1,138 (2.5%)	7 (4.1%)	
Histology				
Ductal	42,701 (91.3%)	42,538 (91.3%)	163 (94.2%)	
Lobular	3,876 (8.3%)	3,867 (8.3%)	9 (5.2%)	
Other	192 (0.4%)	191 (0.4%)	1 (0.6%)	
Tumor Size (mm)				
Median (IQR)	17 (12 - 23)	17 (12 - 23)	17 (13 - 22)	0.77
Oncotype Dx Recurrence Score				
Median (IQR)	15 (11-20)	15 (11-20)	17 (12-24)	0.09
Grade				
1	9,887 (21.9%)	9,861 (21.9%)	26 (15.9%)	
2	22,231 (49.3%)	22,141 (49.3%)	90 (54.9%)	
3	12,978 (28.8%)	12,930 (28.8%)	48 (29.3%)	
Molecular Subtypes by Receptors				
HER2+	3,266 (9.9%)	3,255 (9.9%)	11 (8.3%)	
HR+/HER2-	27,311 (83.1%)	27,195 (83%)	116 (87.2%)	
TNBC	2,305 (7%)	2,299 (7%)	6 (4.5%)	

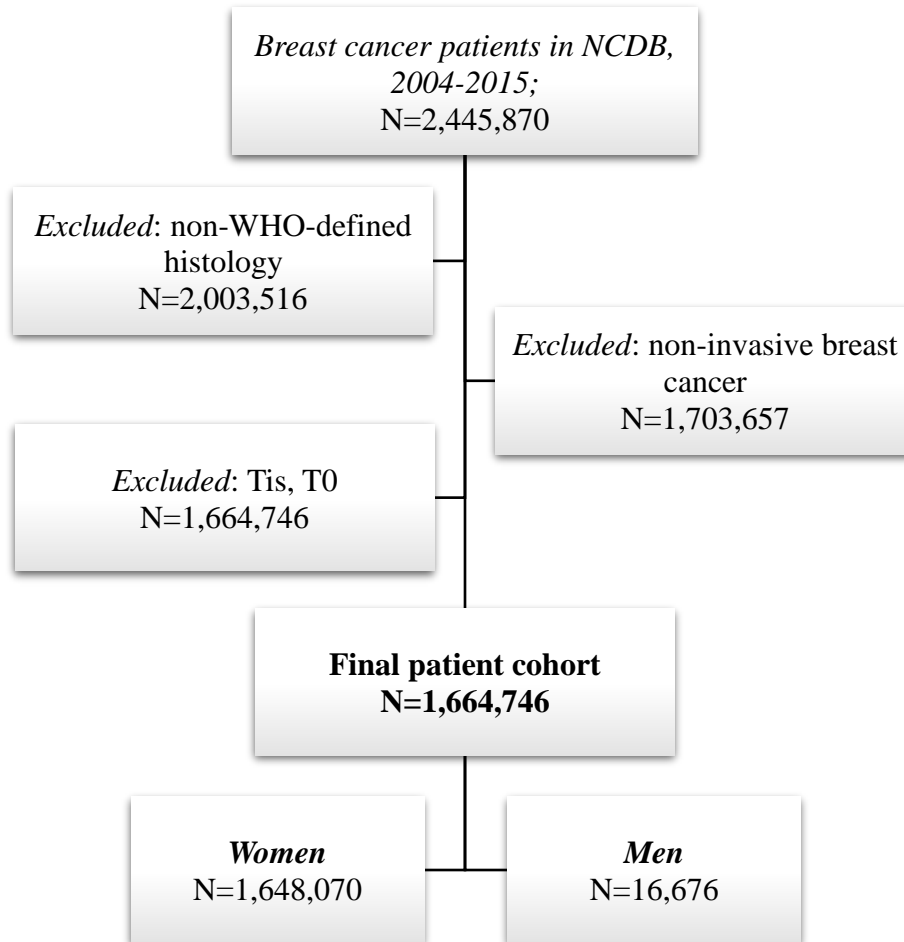


	All Patients	Female	Male	P-Value
	N=46,769 (100%)	N=46,596 (99.6%)	N=173 (0.4%)	
Clinical T Stage				0.24
T1	34,794 (74.4%)	34,672 (74.4%)	122 (70.5%)	
T2	11,975 (25.6%)	11,924 (25.6%)	51 (29.5%)	
Pathological T Stage				0.45
T1	27,707 (66.1%)	27,604 (66.1%)	103 (62.8%)	
T2	13,838 (33%)	13,777 (33%)	61 (37.2%)	
T3	329 (0.8%)	329 (0.8%)	0 (0%)	
T4	57 (0.1%)	57 (0.1%)	0 (0%)	
Pathological N Stage				0.25
N0	836 (2%)	831 (2%)	5 (3%)	
N1	40,957 (97.8%)	40,799 (97.8%)	158 (96.3%)	
N2	52 (0.1%)	51 (0.1%)	1 (0.6%)	
N3	18 (0%)	18 (0%)	0 (0%)	
Anatomic Stage Groups				0.55
I	34,664 (74.1%)	34,542 (74.1%)	122 (70.5%)	
II	11,845 (25.3%)	11,795 (25.3%)	50 (28.9%)	
IV	260 (0.6%)	259 (0.6%)	1 (0.6%)	
Extent of Axillary Surgery				0.18
[1-5] LNs	30,456 (65.1%)	30,335 (65.1%)	121 (69.9%)	
≥ 10 LNs	16,313 (34.9%)	16,261 (34.9%)	52 (30.1%)	
Received Radiation Therapy				<0.001
No	5,170 (11.1%)	5,135 (11.1%)	35 (20.5%)	
Yes	41,417 (88.9%)	41,281 (88.9%)	136 (79.5%)	
Local-Regional Therapy				<0.001
Lumpectomy	5,170 (11.1%)	5,135 (11.1%)	35 (20.5%)	
Lumpectomy+Radiation	41,417 (88.9%)	41,281 (88.9%)	136 (79.5%)	
Received Any Chemotherapy				0.97
No	19,074 (41.5%)	19,004 (41.5%)	70 (41.7%)	
Yes	26,844 (58.5%)	26,746 (58.5%)	98 (58.3%)	
Timing of Chemotherapy				0.96
Adjuvant Chemo Only	25,547 (57.3%)	25,454 (57.3%)	93 (57.1%)	
No Chemo	19,074 (42.7%)	19,004 (42.7%)	70 (42.9%)	
Received Endocrine Therapy based on HR status				0.001

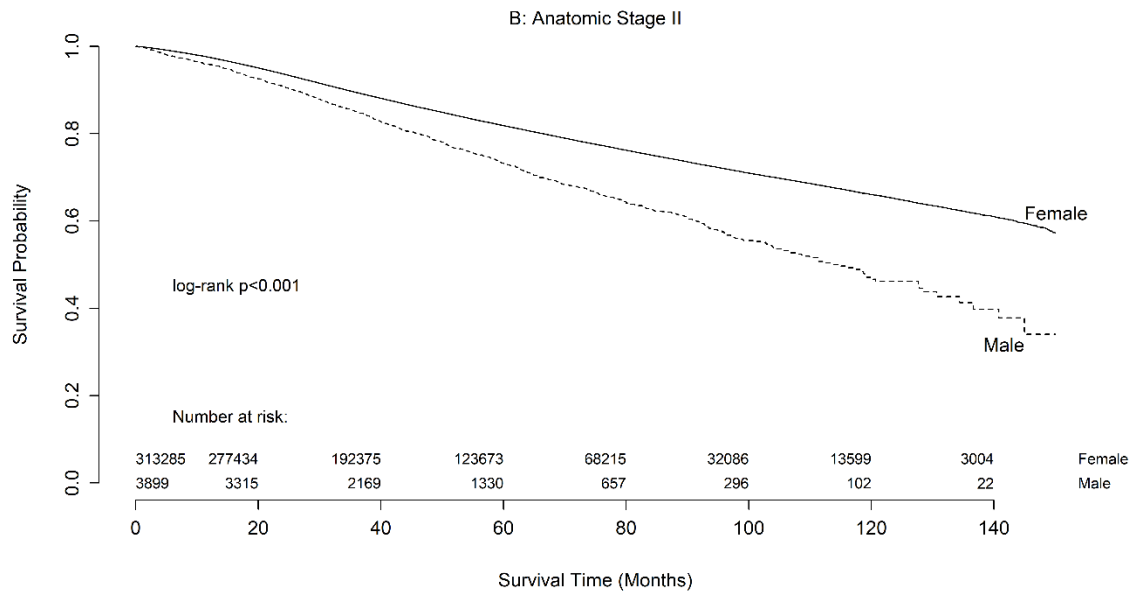
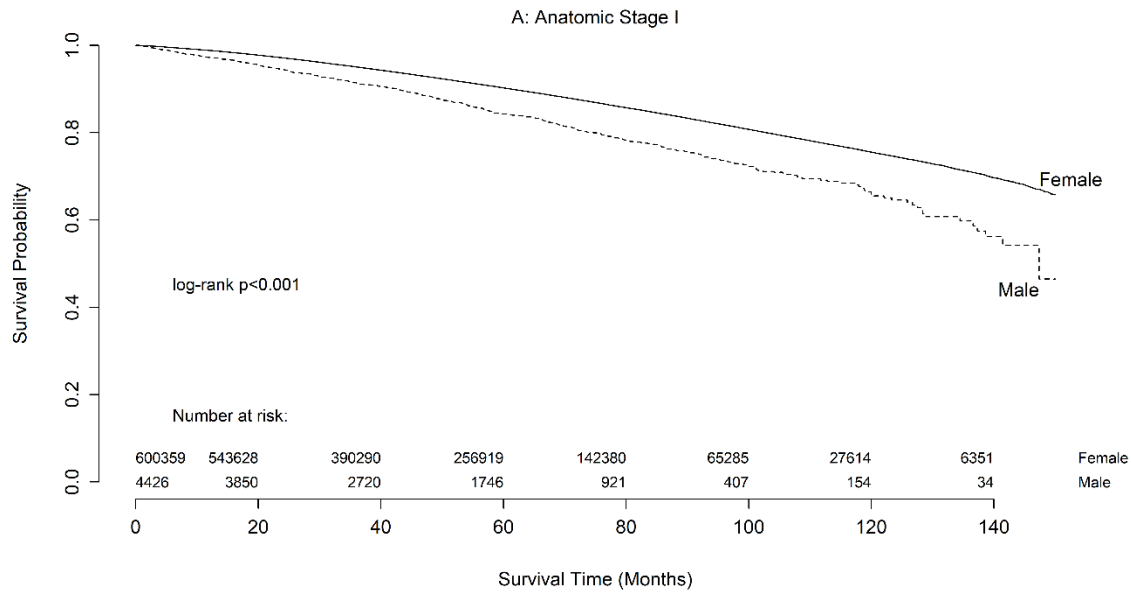
	All Patients	Female	Male	
	N=46,769 (100%)	N=46,596 (99.6%)	N=173 (0.4%)	P-Value
Endocrine if HR+	34,264 (73.8%)	34,149 (73.8%)	115 (67.3%)	
No Endocrine if HR+	7,152 (15.4%)	7,108 (15.4%)	44 (25.7%)	
Endocrine if HR-	160 (0.3%)	160 (0.3%)	0 (0%)	
No Endocrine HR-	4,845 (10.4%)	4,833 (10.4%)	12 (7%)	
Year				0.40
2004	1,335 (2.9%)	1,330 (2.9%)	5 (2.9%)	
2005	1,421 (3%)	1,419 (3%)	2 (1.2%)	
2006	1,534 (3.3%)	1,530 (3.3%)	4 (2.3%)	
2007	1,832 (3.9%)	1,826 (3.9%)	6 (3.5%)	
2008	3,301 (7.1%)	3,289 (7.1%)	12 (6.9%)	
2009	4,008 (8.6%)	3,999 (8.6%)	9 (5.2%)	
2010	4,427 (9.5%)	4,410 (9.5%)	17 (9.8%)	
2011	5,080 (10.9%)	5,056 (10.9%)	24 (13.9%)	
2012	5,382 (11.5%)	5,358 (11.5%)	24 (13.9%)	
2013	5,607 (12%)	5,588 (12%)	19 (11%)	
2014	6,241 (13.3%)	6,223 (13.4%)	18 (10.4%)	
2015	6,601 (14.1%)	6,568 (14.1%)	33 (19.1%)	

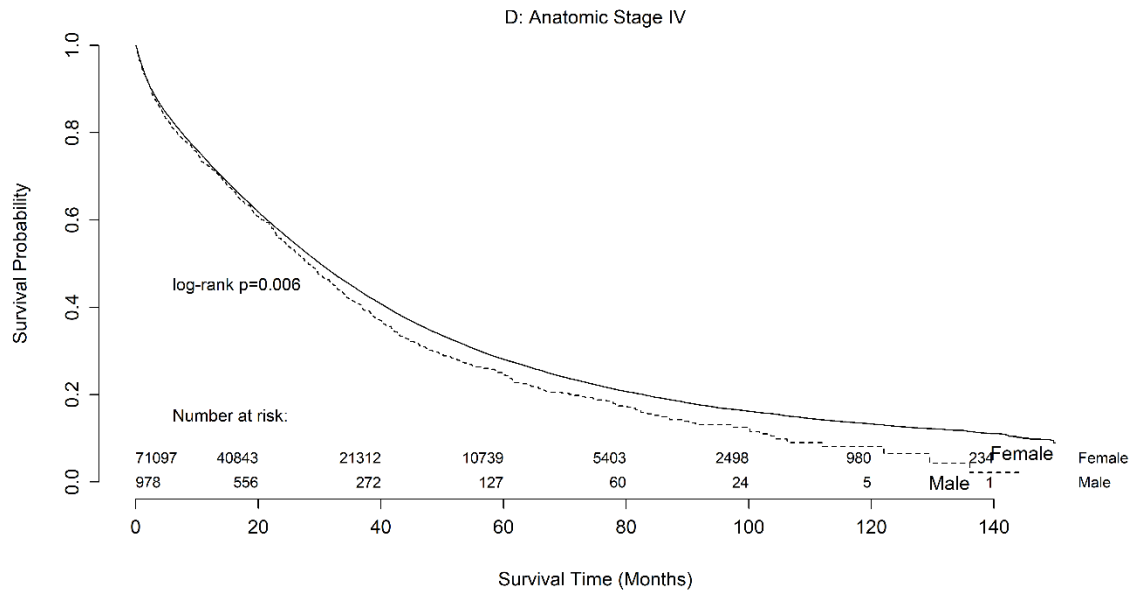
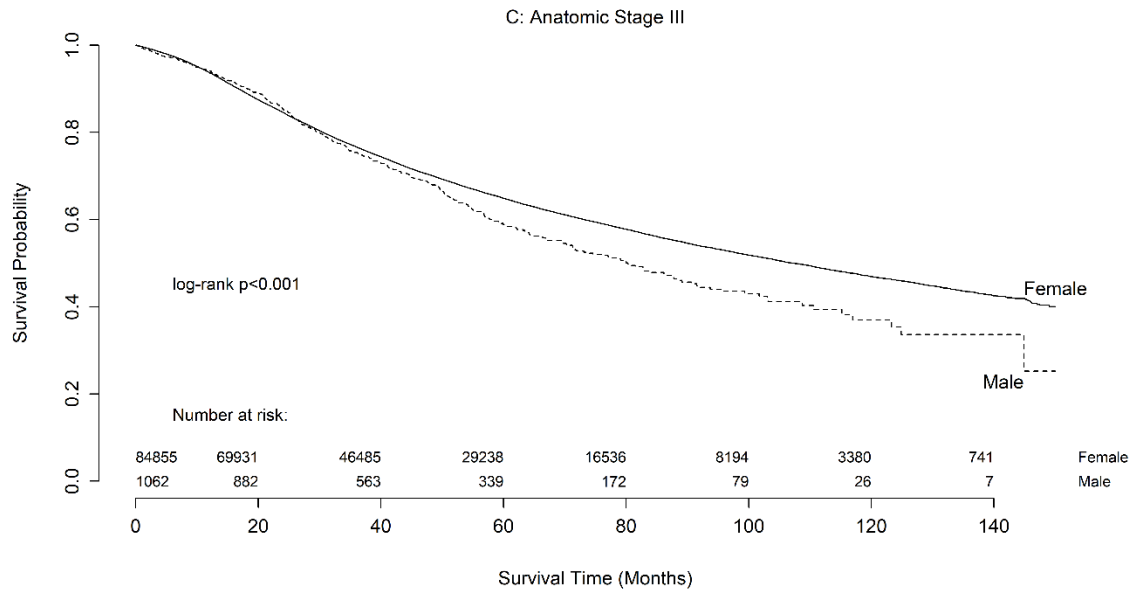
\*Frequency may not add up to total because of missing values. Percentages are of the total reported and are based on the non-missing cohort of each variable.

**Supplemental Figure 1.** Patient selection diagram based on data from the National Cancer Database (NCDB) 2004-2015 dataset, applying the defined inclusion and exclusion criteria. WHO: World Health Organization.



**Supplemental Figure 2.** Unadjusted overall survival stratified by clinical anatomic stage and gender; (2A) Stage I, (2B) Stage II, (2C) Stage III, (2D) Stage IV. Analysis based on a cohort of men and women with invasive breast cancer from the National Cancer Data Base (2004-2015).





**Supplemental Figure 3.** Unadjusted overall survival stratified by clinical prognostic stage and gender; (3A) Stage I, (3B) Stage II, (3C) Stage III, (3D) Stage IV. Analysis based on a cohort of men and women with invasive breast cancer from the National Cancer Data Base (2004-2015).

