

Supplementary figure S1

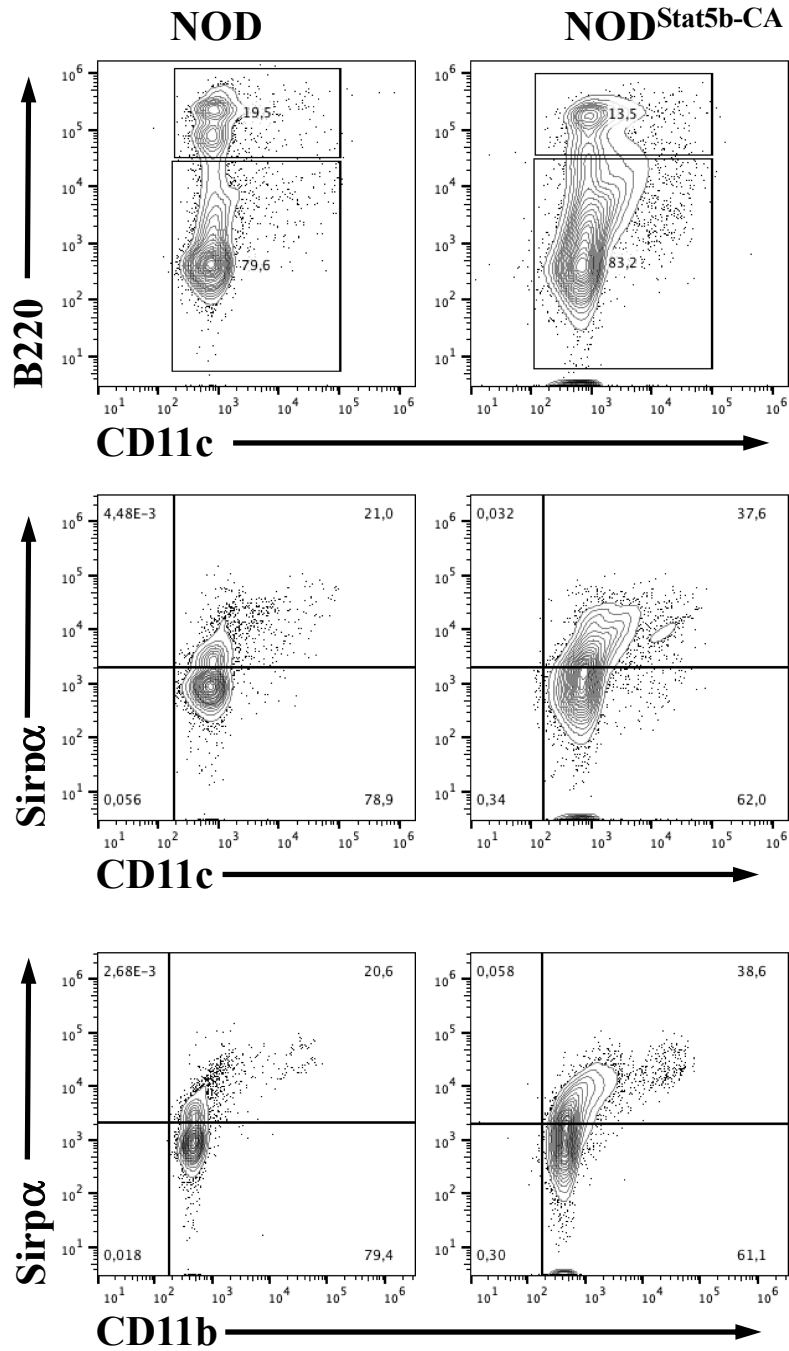


Figure S1. Percentages of Sirp α ⁺-expressing BMDCs generated from NOD and NOD^{Stat5b-CA} mice. BMDCs were derived from NOD and NOD.CD11c^{Stat5b-CA} mice using Flt3L (50 ng/mL) for 6 days and analyzed by flow cytometry. Data are a representative FACS profile of CD11c⁺B220⁺ cells, CD11c⁺B220⁻Sirp α ⁺ cells, and CD11c⁺ B220⁻CD11b⁺Sirp α ⁺ cell subsets.