

Table S1. Food intake, drinking volume and body weight.

| Group                       | NOR                         | CON            | EL             | EM             | EH             |
|-----------------------------|-----------------------------|----------------|----------------|----------------|----------------|
| Food intake (g/day)         | 5.00 ± 0.10 <sup>ns</sup>   | 6.79 ± 0.48    | 5.21 ± 0.05    | 4.96 ± 0.16    | 5.45 ± 0.11    |
| Drink volume (mL/day)       | 4.29 ± 0.11 <sup>ns</sup>   | 4.86 ± 0.11    | 5.33 ± 0.22    | 5.29 ± 0.03    | 4.86 ± 0.16    |
| Average daily gain (mg/day) | 125.01 ± 7.17 <sup>ns</sup> | 122.92 ± 12.33 | 122.08 ± 10.43 | 121.83 ± 14.48 | 123.75 ± 11.07 |

NOR: normal group; CON: UVB-control group; EL: low dose of ethanol-extracted *V. uliginosum*-treated group; EM: middle dose of ethanol-extracted *V. uliginosum*-treated group; EH: high dose of ethanol-extracted *V. uliginosum*-treated group. Data are expressed as mean ± standard error (n=6), NS: not significant.

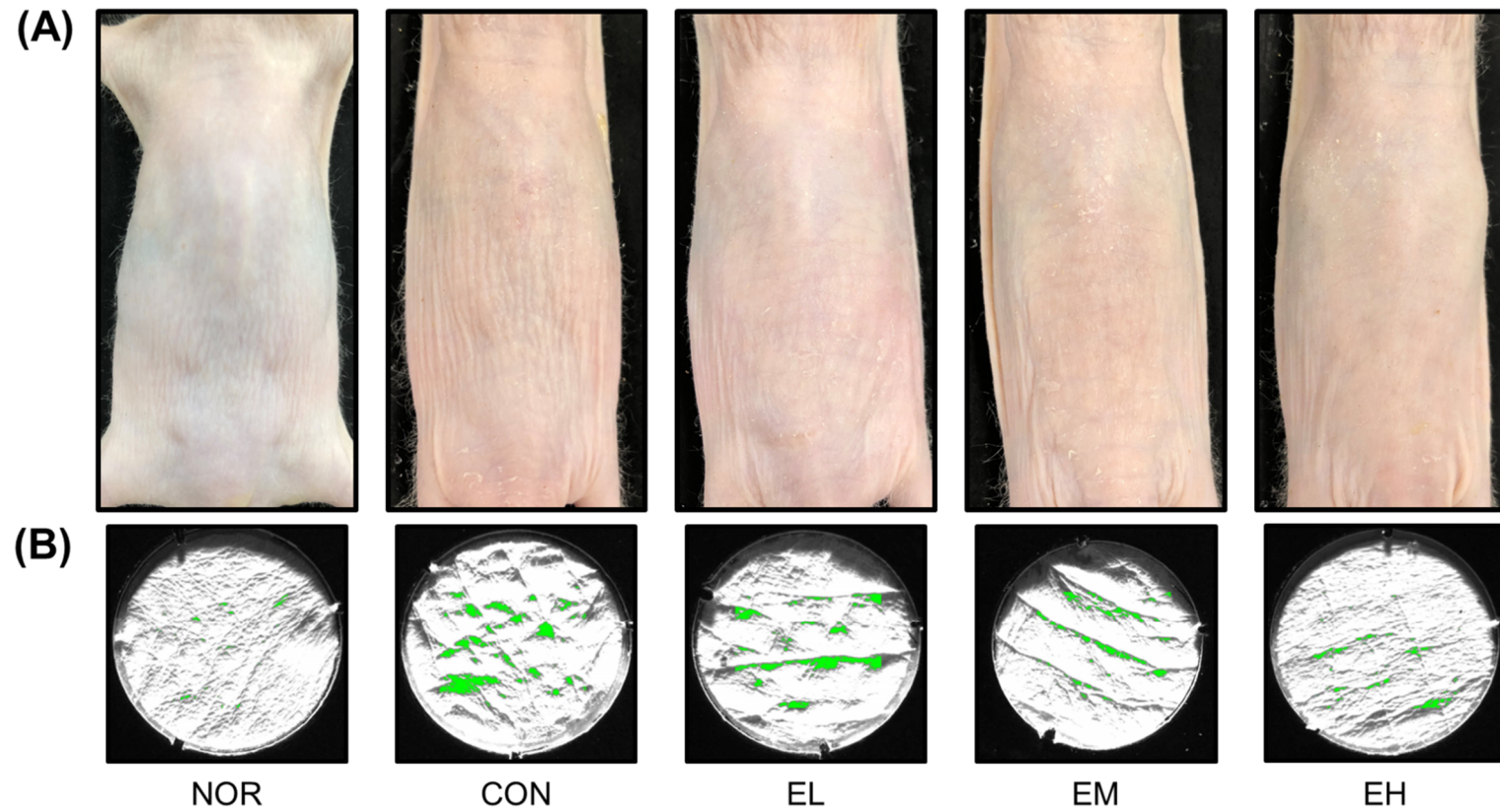


Figure S1. Effects of an anthocyanin-enriched extract from *Vaccinium uliginosum* on UVB-irradiated mouse skin. The dorsal skin of hairless mice was (A) photographed, and (B) replicas of the back skin were made using a Replica full kit. NOR: normal group; CON: UVB-control group; EL: low dose of ethanol-extracted *V. uliginosum*-treated group; EM: middle dose of ethanol-extracted *V. uliginosum*-treated group; EH: high dose of ethanol-extracted *V. uliginosum*-treated group.