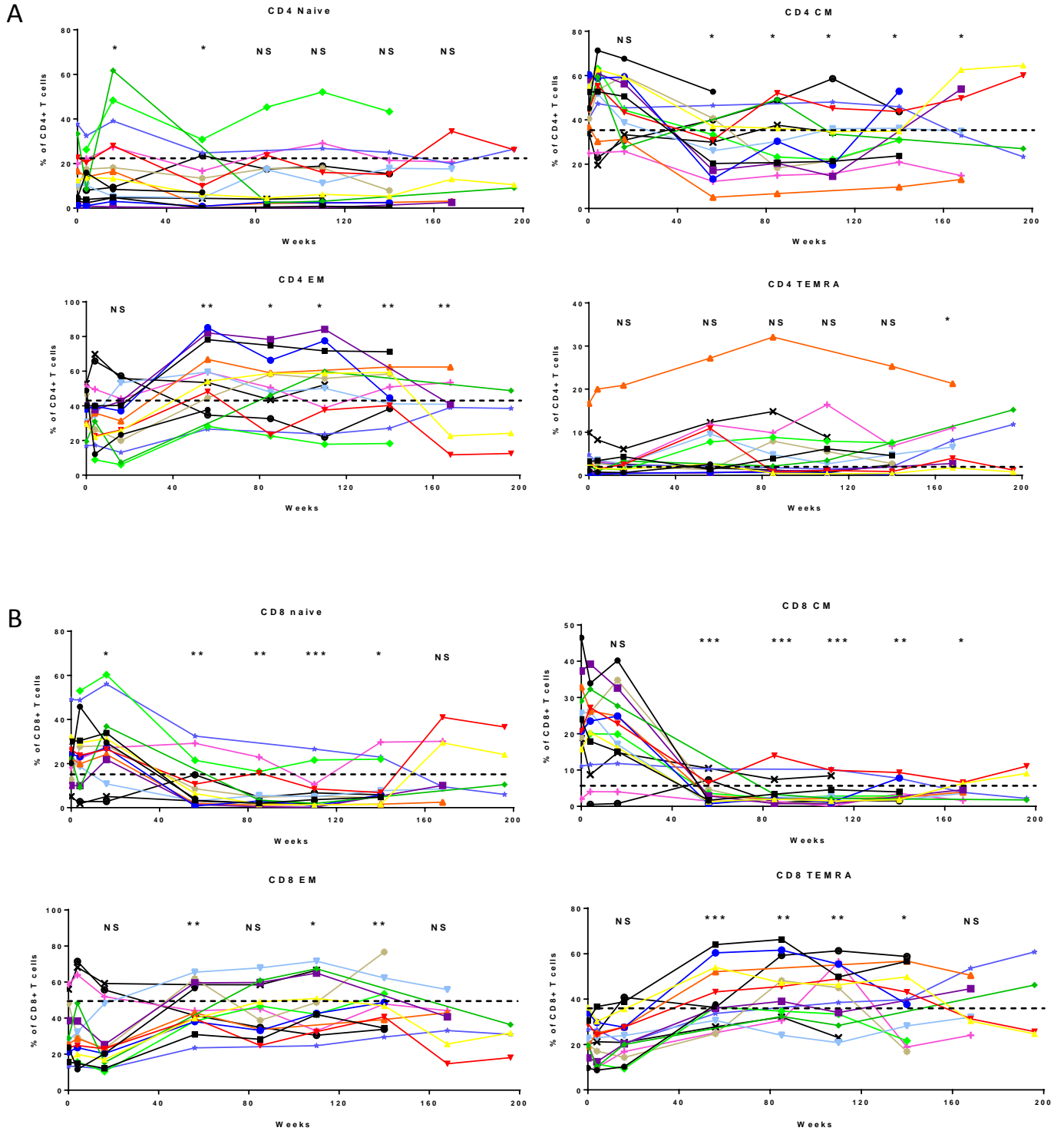
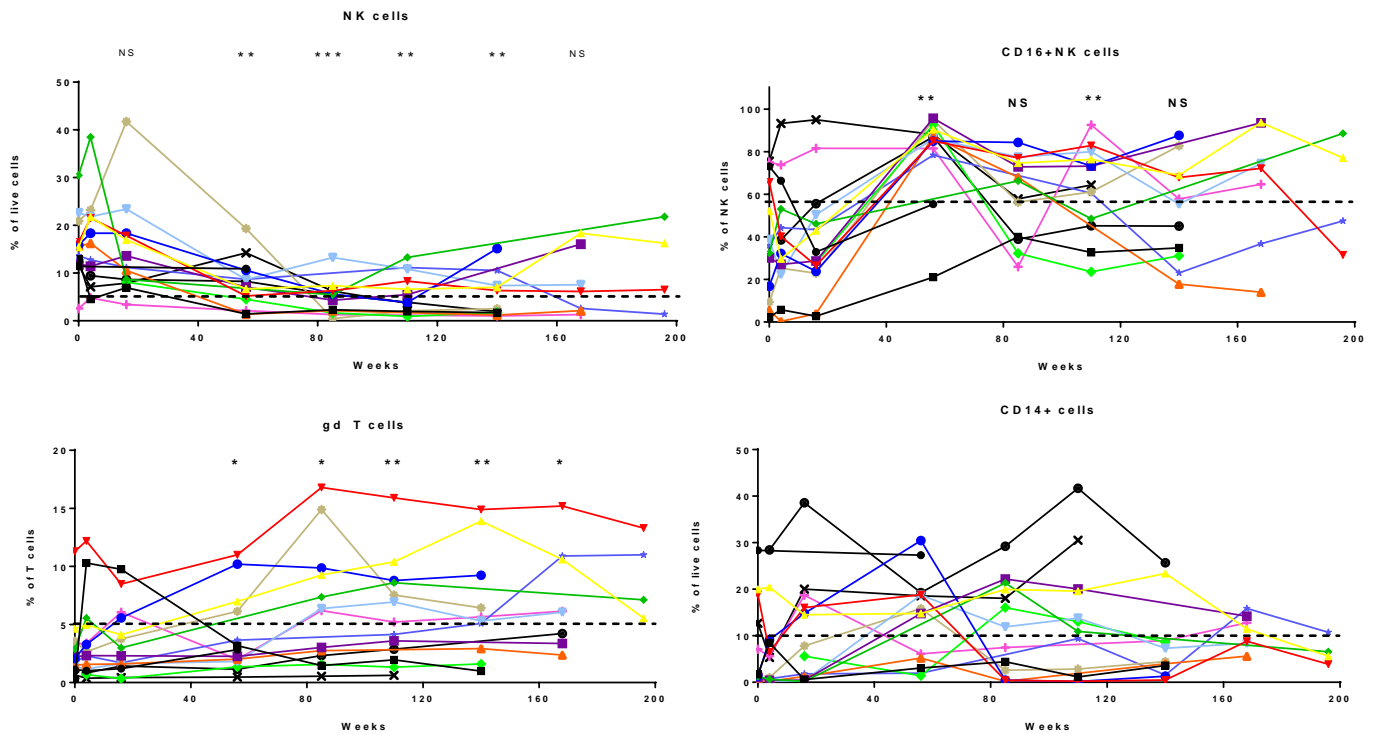


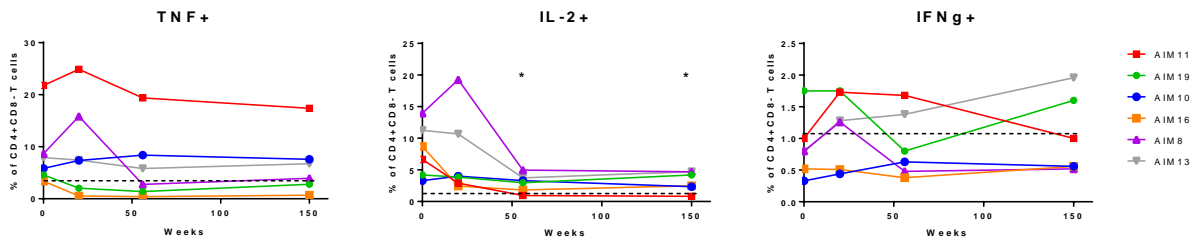
Supplementary data for: Immune Recovery in Patients with Mantle Cell Lymphoma Receiving Long Term Ibrutinib and Venetoclax Combination Therapy



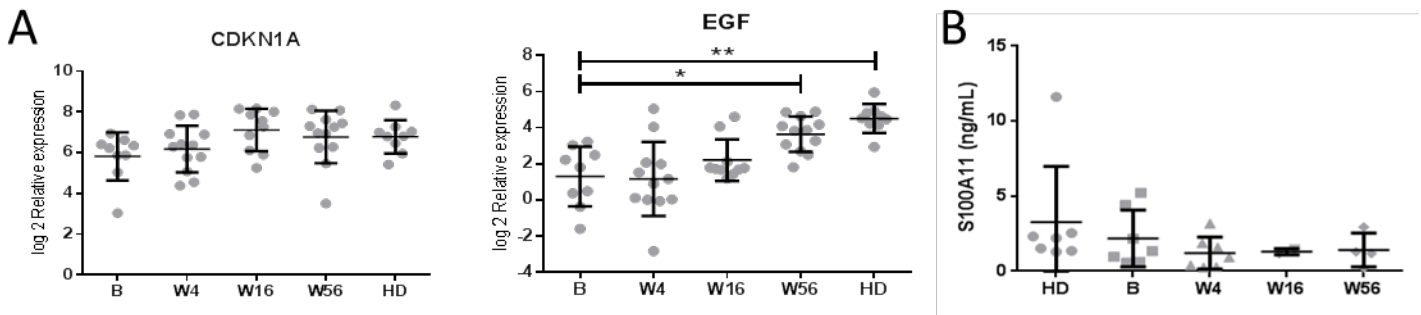
Supplementary Figure S1: Long term changes in the frequency of T cells over time. Flow cytometry analysis of (A) CD4+ memory subsets (Naïve, Central Memory (CM), Effector Memory (EM) and Terminal Effector Memory (TEM)) and (B) CD8+ memory subsets (n=15). Statistics – Wilcoxon matched pairs signed rank test to Baseline. *P<0.05, **P<0.01, ***P<0.001, ****P<0.0001. Each colour represents a different patient in the study. Dotted horizontal line indicates the average %positive in healthy controls (n=8).



Supplementary Figure S2: Long term changes in the frequency of NK, $\gamma\delta$ T cells and monocytes over time. Flow cytometry analysis of NK cells, CD16+ NK cells, $\gamma\delta$ T cells and CD14+ cells over time (n=15). Statistics – Wilcoxon matched pairs signed rank test to Baseline. *P<0.05, **P<0.01, ***P<0.001, ****P<0.0001. Each colour represents a different patient in the study. Dotted horizontal line indicates the average %positive in healthy controls (n=8).



Supplementary Figure S3: Cytokine production in CD4+ T cells. Cytokine production in CD4+ T cells from PBMC stimulated with CD3/28 T cell activation beads at baseline and on treatment (n=6). Dotted horizontal line indicates average cytokine percentage in age matched donors (n=8). Statistics - Wilcoxon's matched pairs signed rank test compared to baseline. *P<0.05



Supplementary Figure S4: Changes in downstream signalling pathways that may be impacted by S100A11 upregulation. (A) Expression of CDKN1A and EGF. (B) Plasma concentrations of S100A11. Kruskal-Wallis test Dunn's multiple comparisons to B. *P<0.05, **P<0.01, ***P<0.001