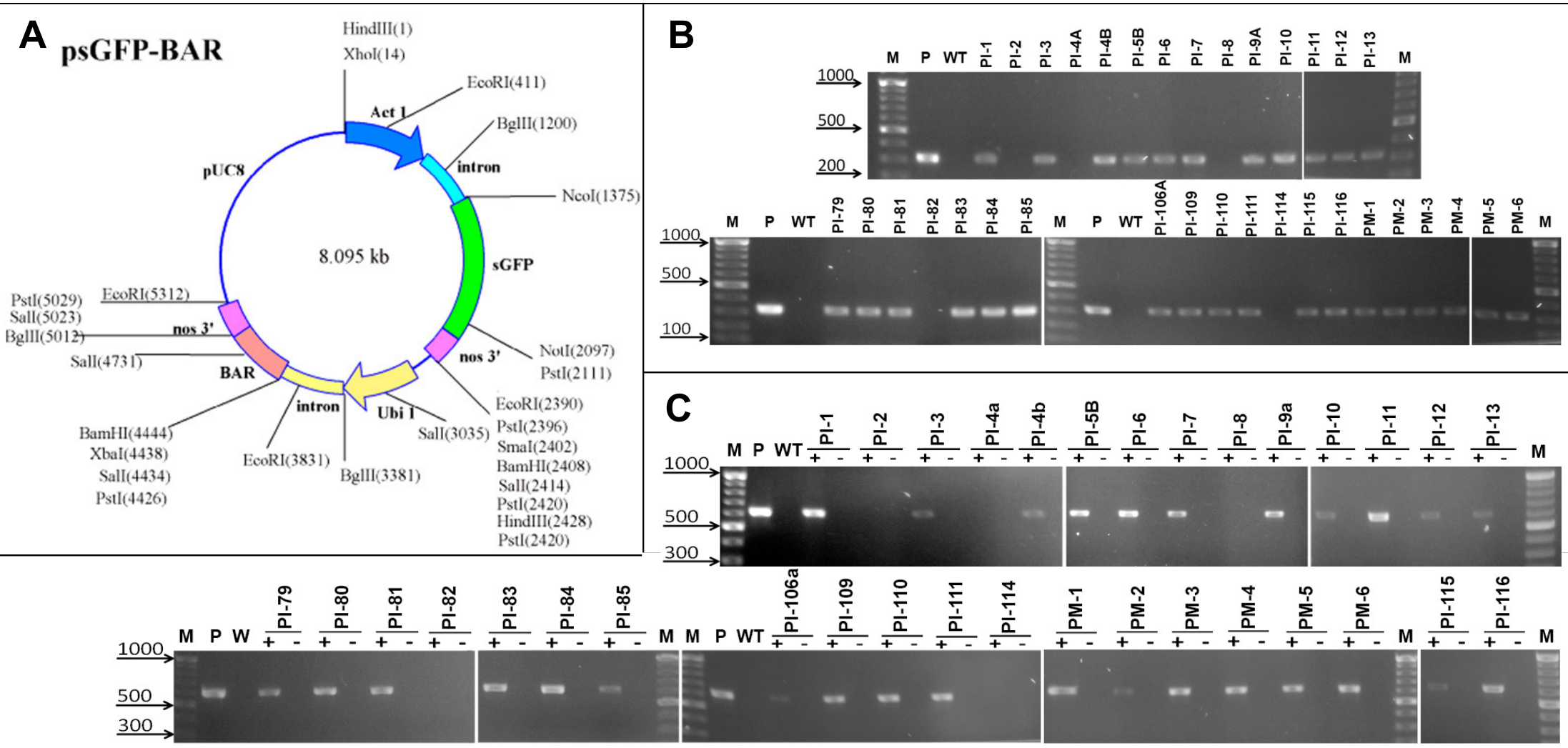


Supplementary Material 1

A competence of embryo-derived tissues of tetraploid cultivated wheat species *Triticum dicoccum* and *Triticum timopheevii* for efficient and stable transgenesis mediated by particle inflow gun



**Figure S1. a.** Schematic diagrams of psGFP-BAR vector used for transformation. Red bar represents the position of the probe used for Southern blot analysis. **b,c.** Putative transgenic plants of emmer wheat ‘Runo’ produced within experiments were analyzed for the presence of *bar* gene by PCR amplification (**b**) and GFP expression by RT-PCR (**c**); an example of analysis for a part of plants generated using IE-derived explants (labeled as PI) and ME-derived explants (labeled as PM); lane M, DNA ladder as molecular weight marker; lane P, psGFP-BAR; lane WT, untransformed emmer wheat plant; +, a sample with addition of reverse transcriptase; -, the same sample without addition of reverse transcriptase.