

Nicardipine Loaded Solid Phospholipid Extrudates for the Prevention of Cerebral Vasospasms: In Vitro Characterization

Christin Zlomke, Johannes Albrecht and Karsten Mäder

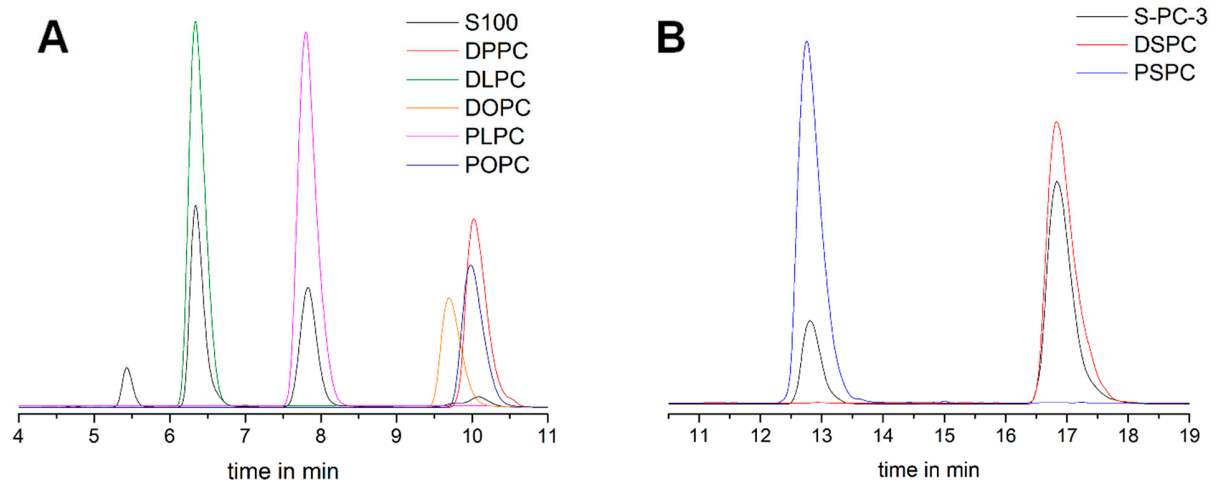


Figure S1. HPLC chromatograms of (A) S100 and (B) S-PC-3 each with selected standard PC types.

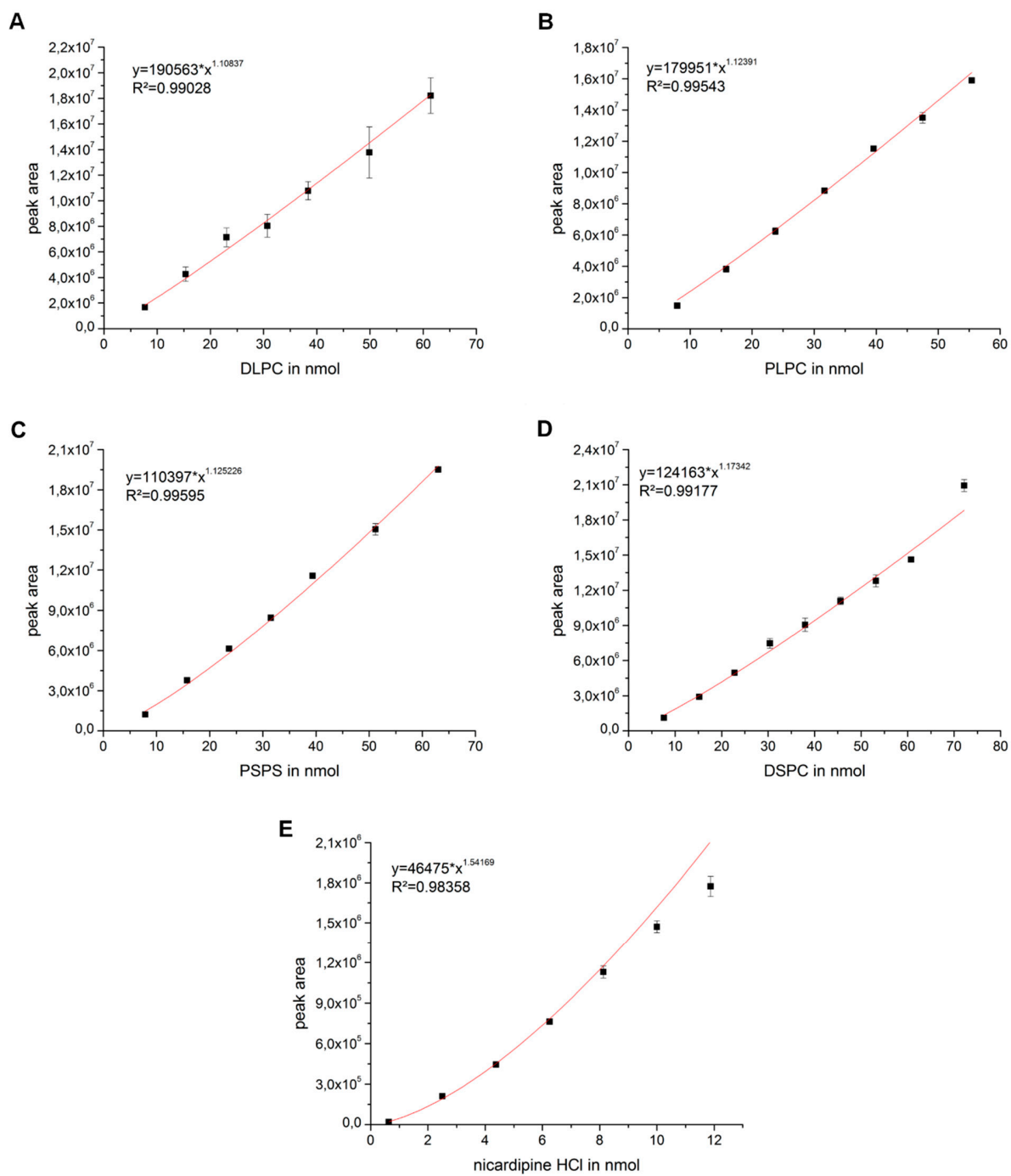


Figure S1. ELSD-HPLC calibration curves of phosphatidylcholine standards DLPC (A), PLPC (B), PSPC (C) and DSPC (D) as well as nicardipine hydrochloride (E).

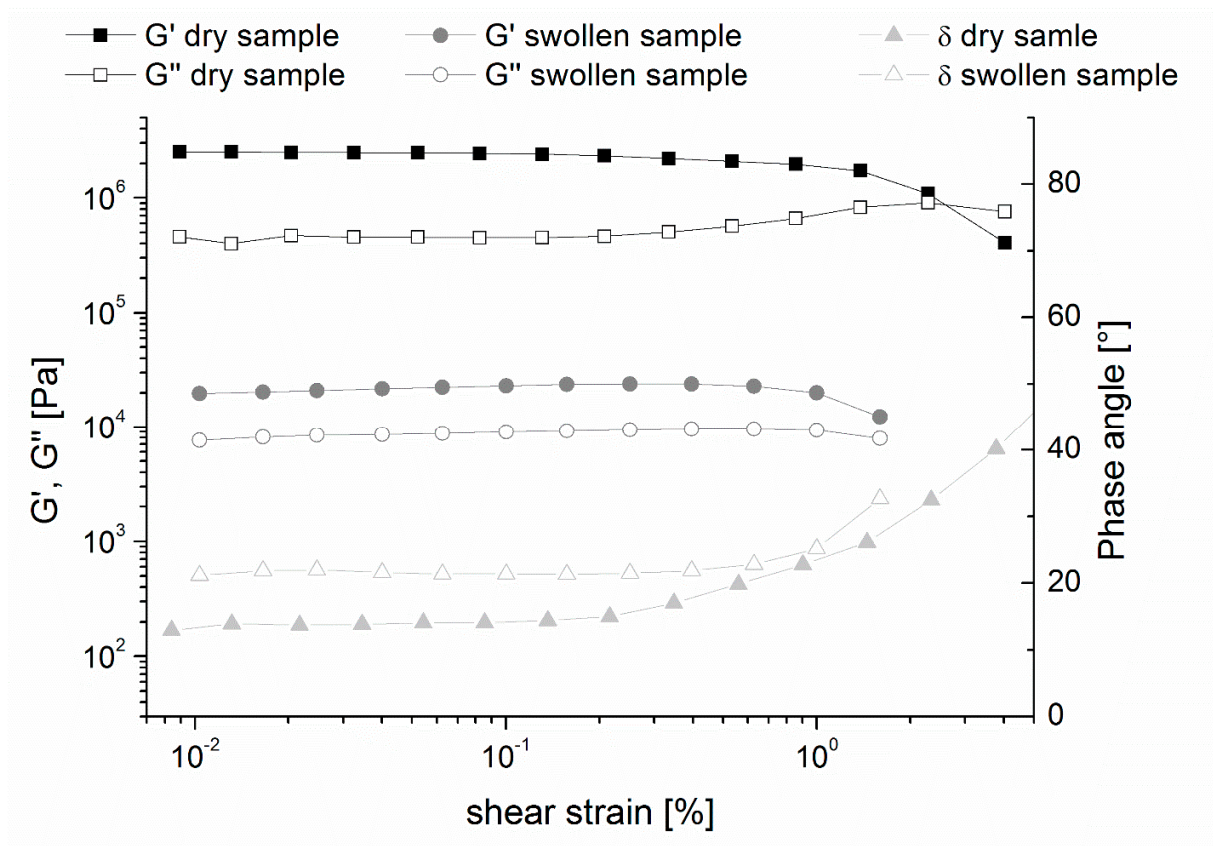


Figure S2. Impact of shear strain and buffer exposure (5 days of incubation in PBS at 37 °C) on the phase angle and the elastic (G') and loss (G'') moduli of S100:S-PC-3 60:40.

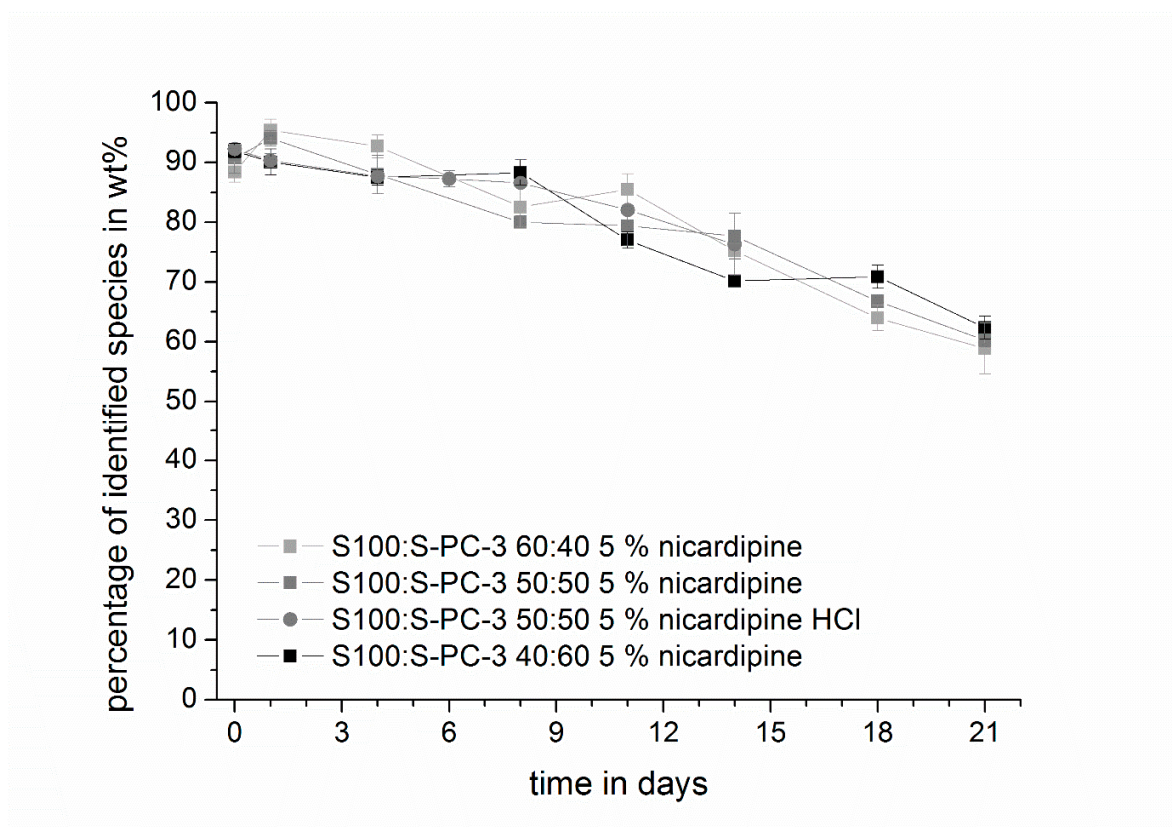


Figure S4. Percentage of identified species from total extrudate mass during release studies. Data are presented as mean \pm SD, $n = 3$.