

Supplementary material

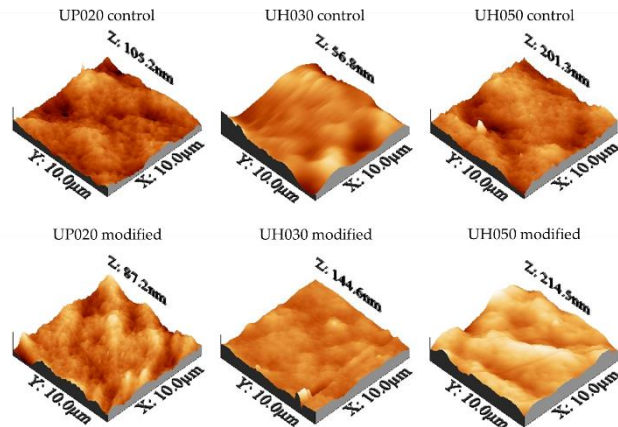


Figure 1. AFM images of the control and modified membranes.

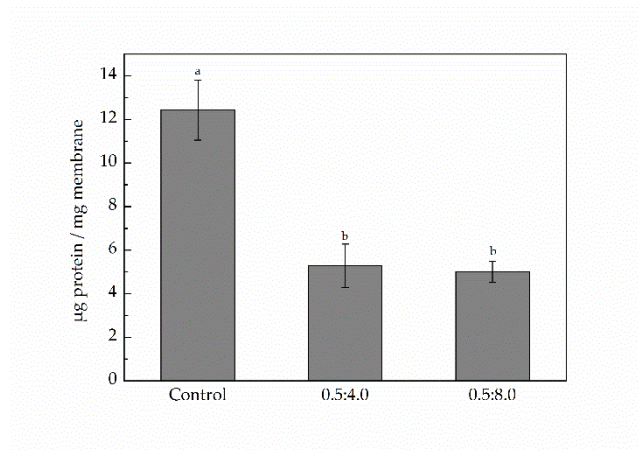


Figure S2: Static adsorption test of BSA on the surface of the control and modified membranes. The test was performed for 6 h with a BSA solution concentration of 0.5 g L⁻¹. Bars with different letters show statistical difference ($p < 0.05$).

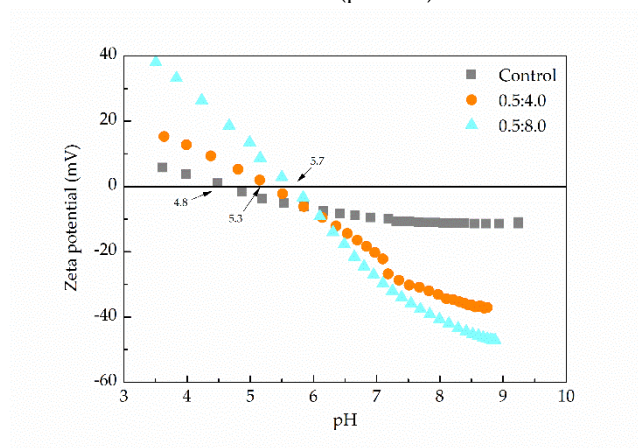


Figure S3: Zeta potential of the control and modified membranes. The DA and PEI concentrations used to modify the membranes were 0.5:4.0 and 0.5:8.0 mg mL⁻¹.