

Figure 6A: HeLa cells stably expressing GFP alone or GFP-FXR1 were immunoprecipitated using GFP-Trap beads (GFP-IP), analysed by Western blot.

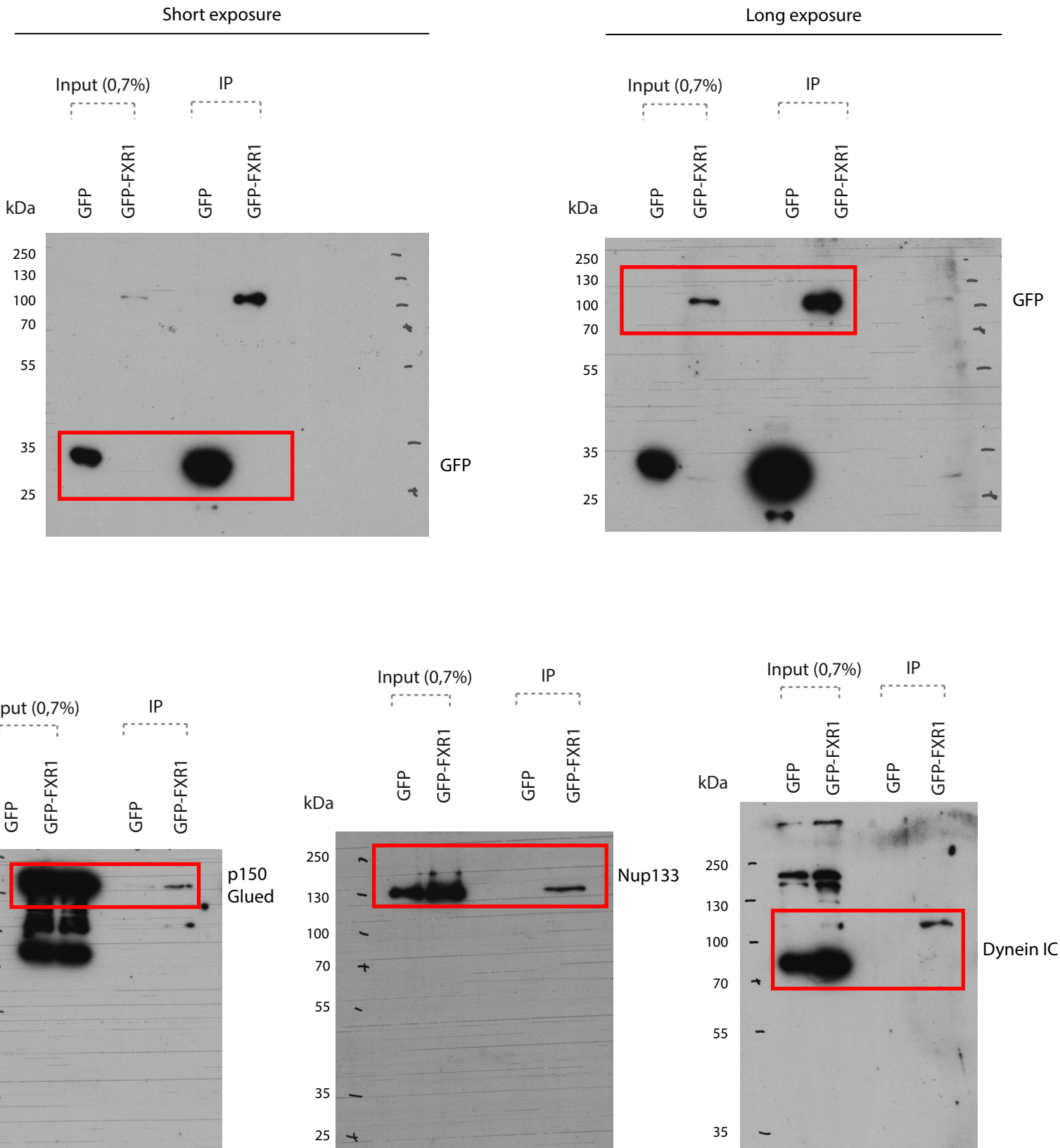


Figure 6D: HLysates of HeLa cells stably expressing GFP alone or GFP-FXR1 were subjected to immunoprecipitation using GFP-Trap beads (GFP-IP), analysed by Western blotting.

