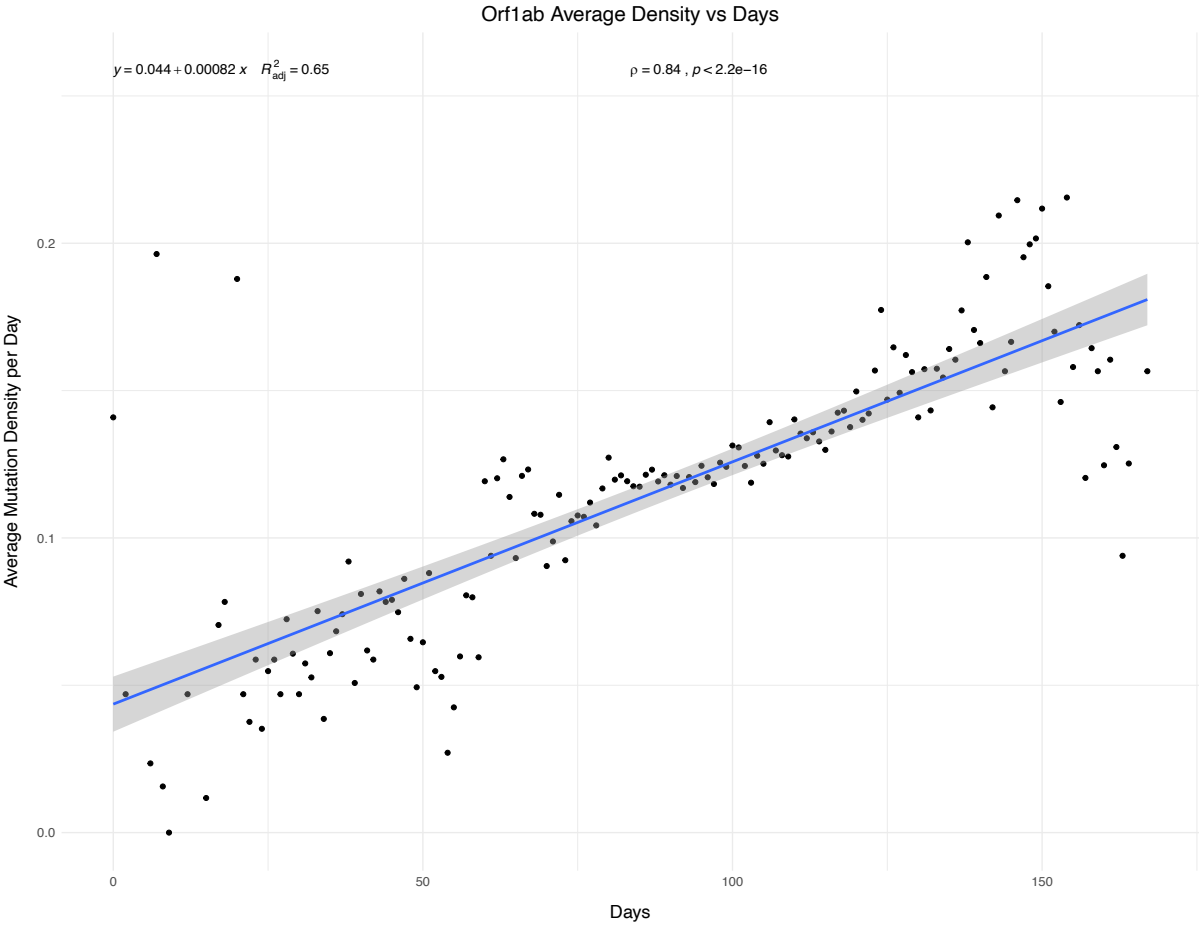
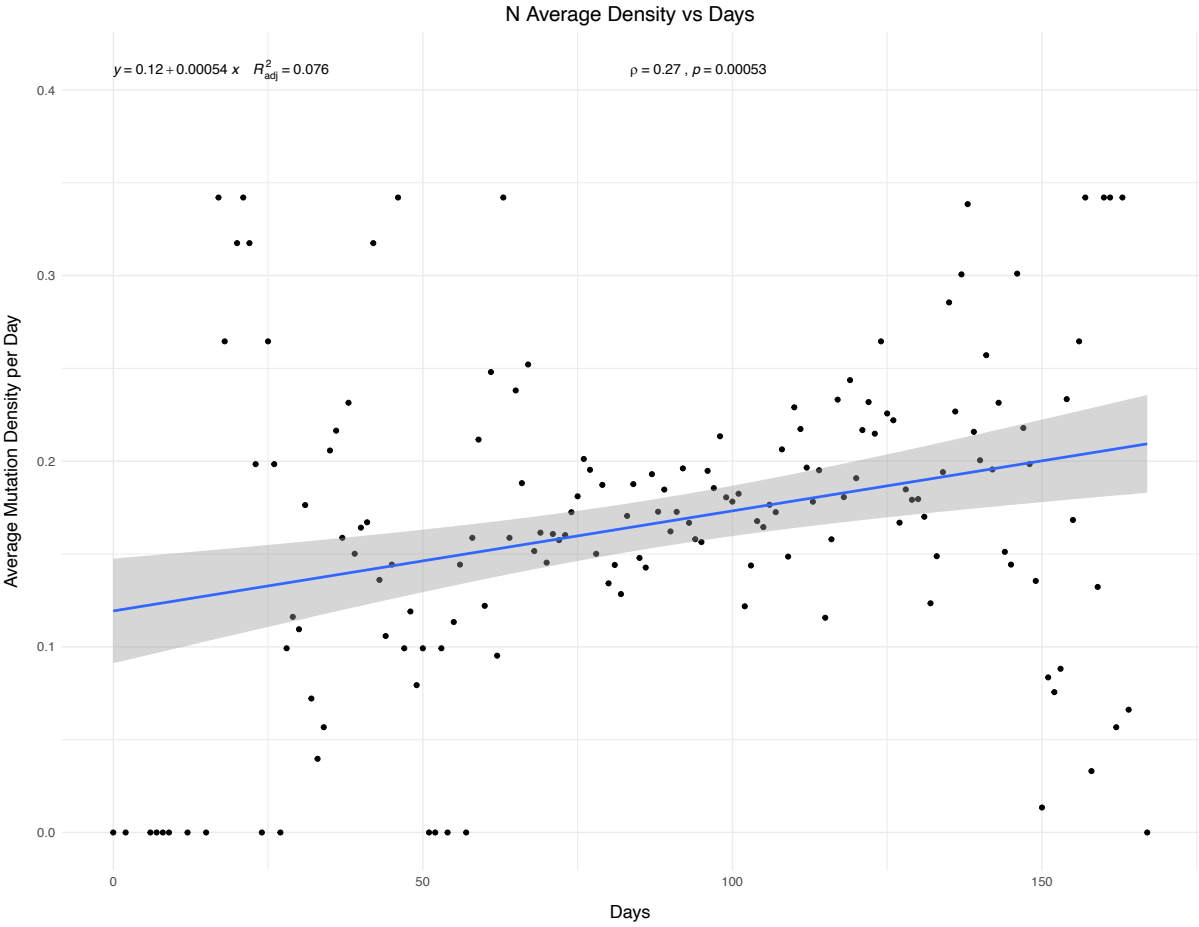


**Supplementary Figure 1**



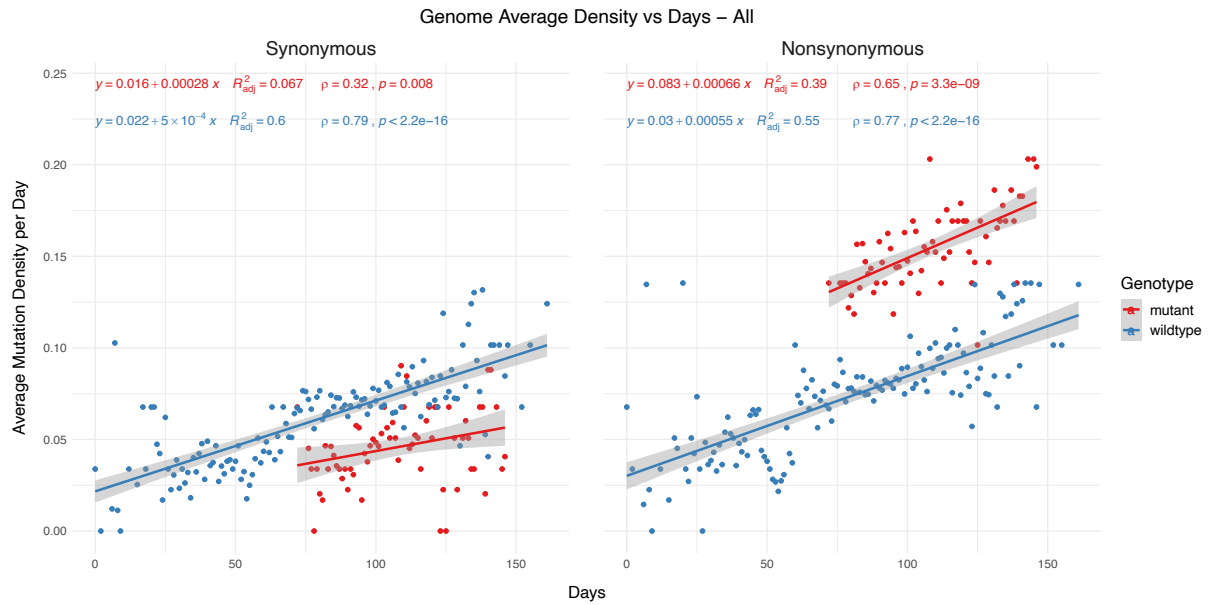
**Supplementary Figure 1. The distribution of daily mutation density averages in Orf1ab gene.** Correlation scores are calculated using Spearman rank correlation.

### Supplementary Figure 2



**Supplementary Figure 2. The distribution of daily mutation density averages in N gene.**  
Correlation scores are calculated using Spearman rank correlation.

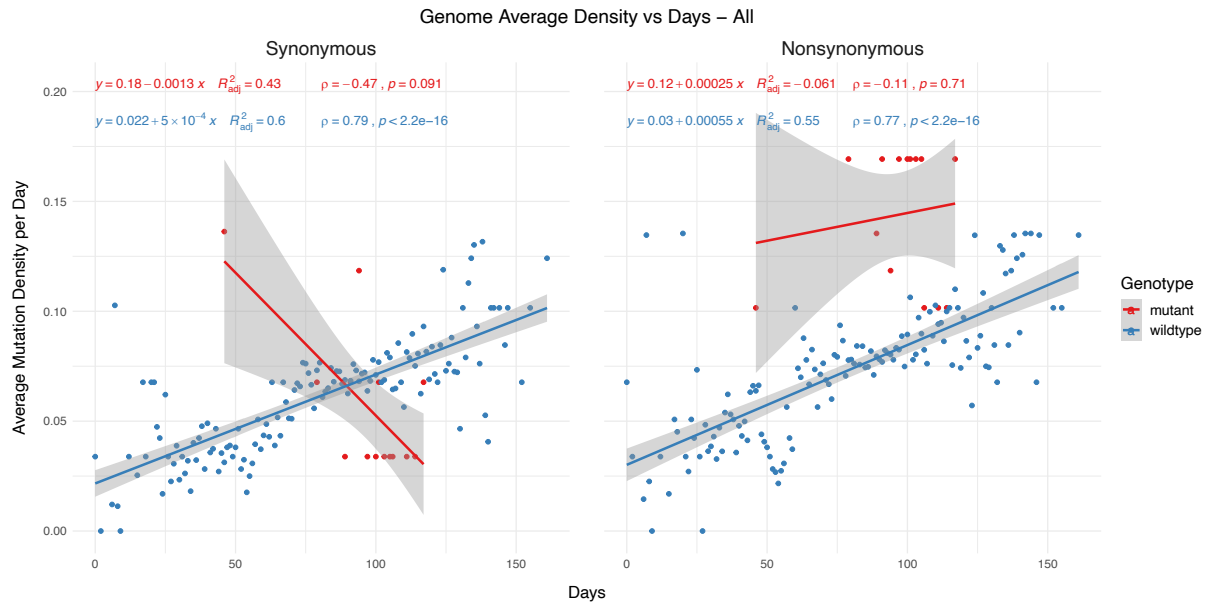
### Supplementary Figure 3



**Supplementary Figure 3. The distribution of synonymous and nonsynonymous mutations in isolates carrying 11916C>T mutation compared to wildtype isolates.**

Correlation scores are calculated using Spearman rank correlation.

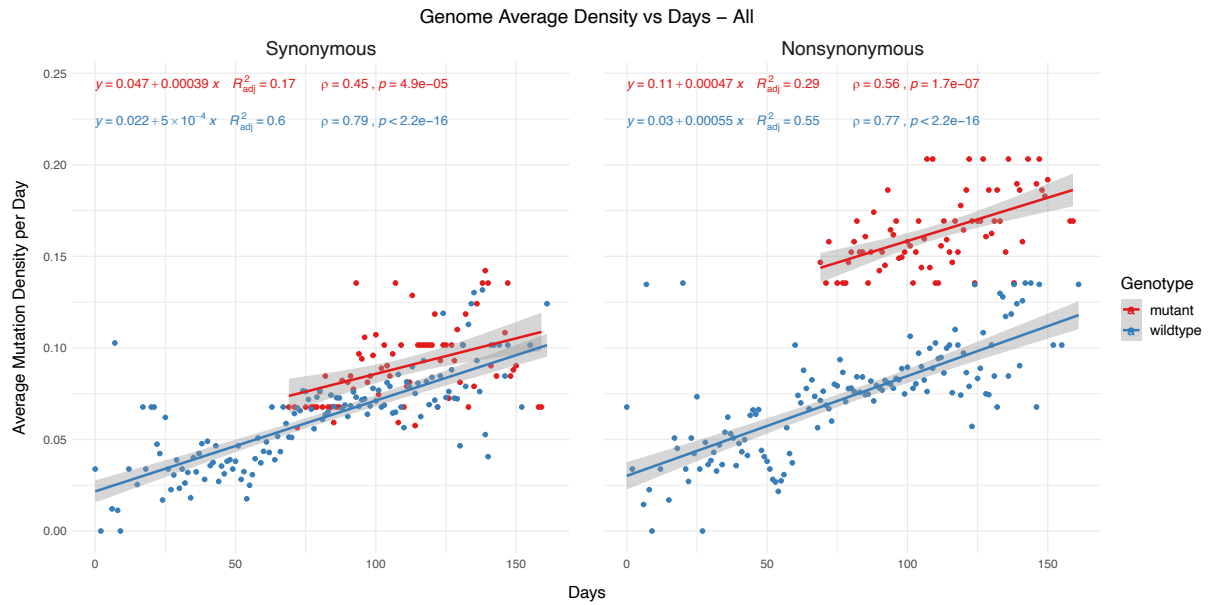
## Supplementary Figure 4



**Supplementary Figure 4. The distribution of synonymous and nonsynonymous mutations in isolates carrying 12073C>T mutation compared to wildtype isolates.**

Correlation scores are calculated using Spearman rank correlation.

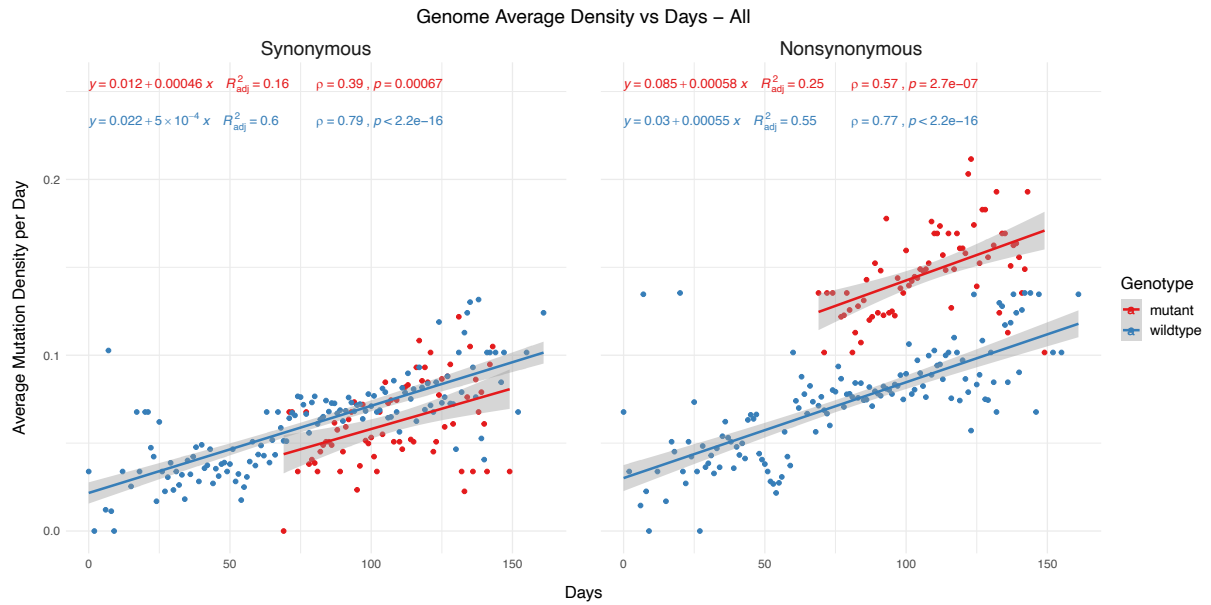
## Supplementary Figure 5



**Supplementary Figure 5. The distribution of synonymous and nonsynonymous mutations in isolates carrying 13536C>T mutation compared to wildtype isolates.**

Correlation scores are calculated using Spearman rank correlation.

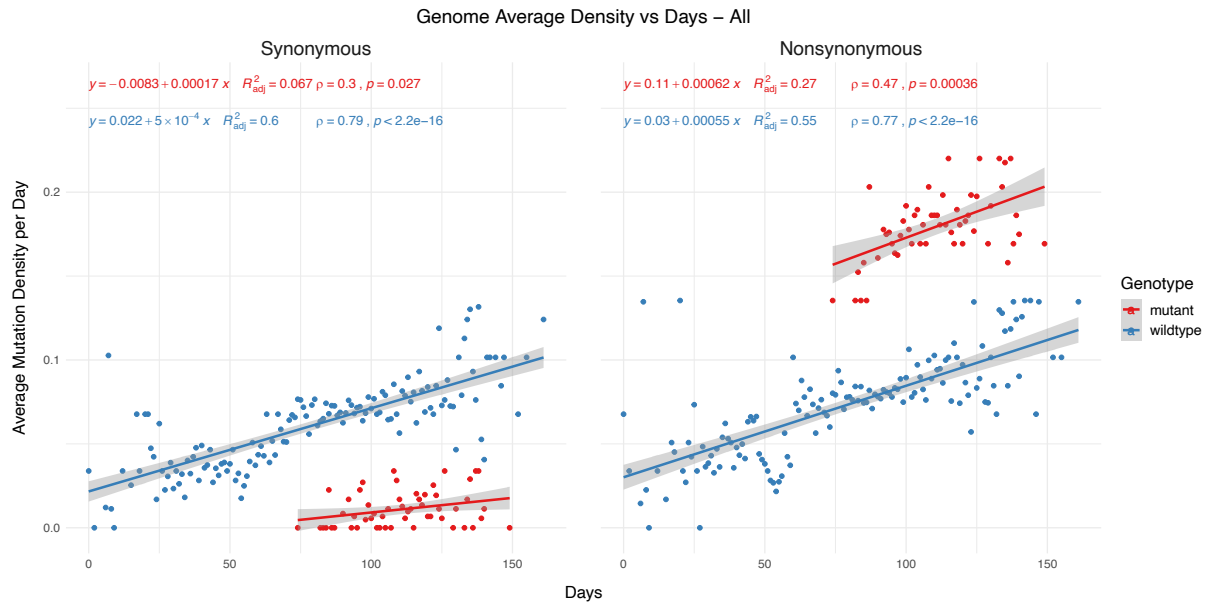
## Supplementary Figure 6



**Supplementary Figure 6. The distribution of synonymous and nonsynonymous mutations in isolates carrying 13730C>T mutation compared to wildtype isolates.**

Correlation scores are calculated using Spearman rank correlation.

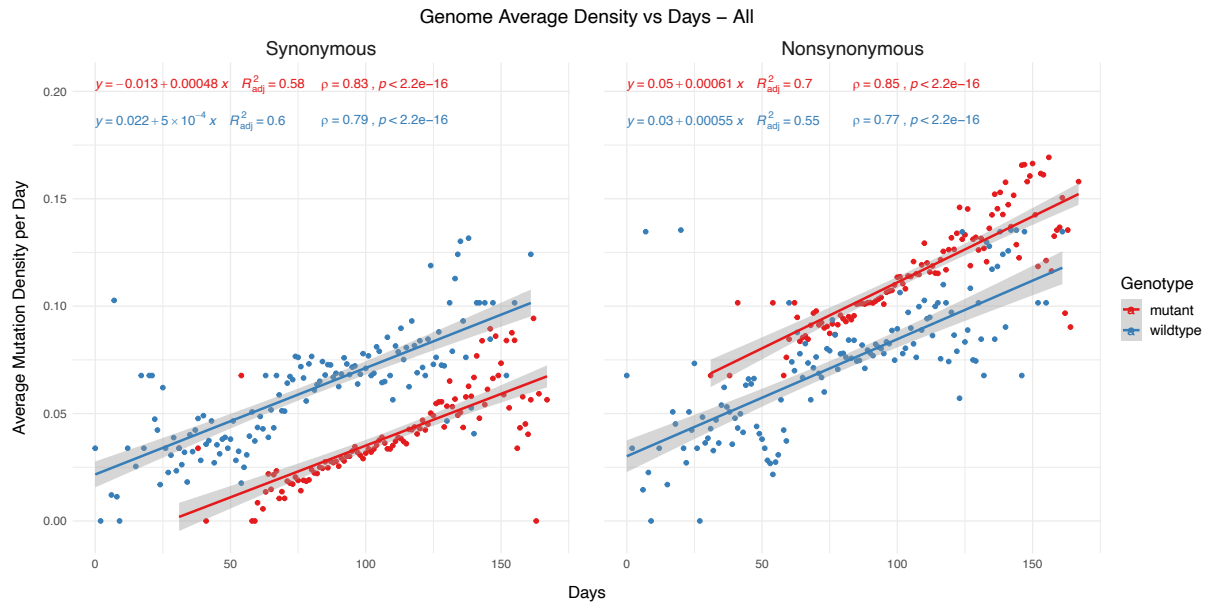
## Supplementary Figure 7



**Supplementary Figure 7. The distribution of synonymous and nonsynonymous mutations in isolates carrying 13862C>T mutation compared to wildtype isolates.**

Correlation scores are calculated using Spearman rank correlation.

## Supplementary Figure 8



**Supplementary Figure 8. The distribution of synonymous and nonsynonymous mutations in isolates carrying 14408C>T mutation compared to wildtype isolates.**

Correlation scores are calculated using Spearman rank correlation.