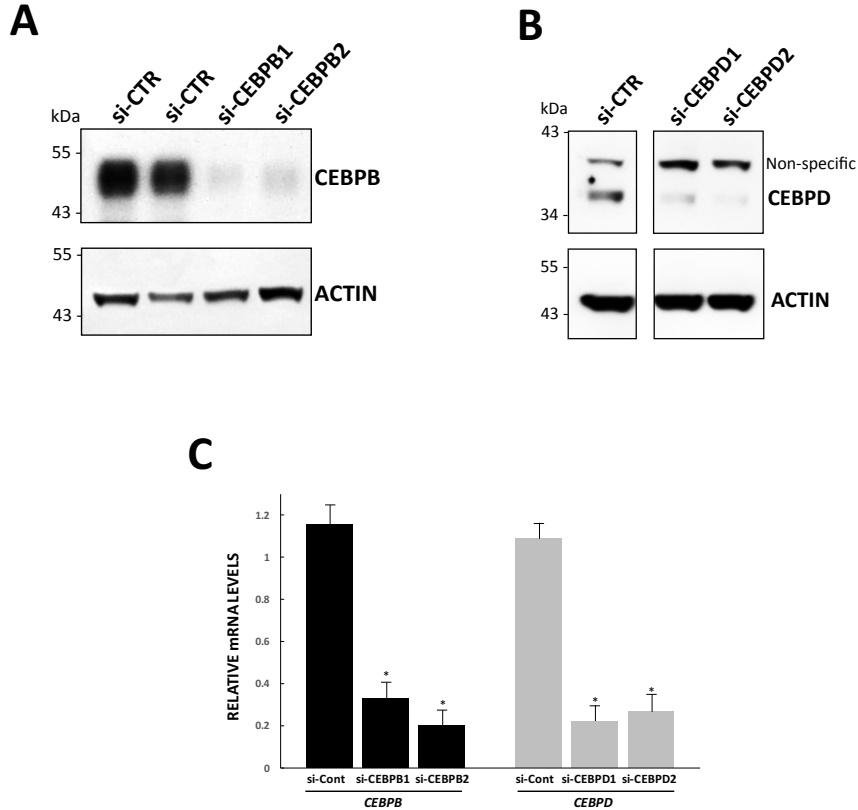


Supplementary Figure S4



Supplementary Figure S4

Knockdown efficacies of siCEBPBs and siCEBPDs. A,B, Knockdown efficiencies of siCEBPBs (A) and CEBPDs (B) in T98G cells on their corresponding proteins. Cultures were transfected with the indicated siRNAs and assessed 4 days later for expression of CEBPB and CEBPD by Western immunoblotting. For CEBPD blot in B, all samples were analyzed on the same blot and irrelevant intervening lanes were removed as indicated. C, Efficacy of CEBPB and CEBPD siRNAs in knocking down their corresponding mRNAs. Replicate cultures of T98G cells were treated with the indicated siRNAs for 3 days and then assessed for relative levels of *CEBPB* and *CEBPD* mRNA. Values are means \pm SEM. For si-Cont, N=13(*CEBPB*) or 9(*CEBPD*) for 3 independent experiments; si-CEBPB1 and si-CEBPD2, N=9 for 3 independent experiments; for siCEBPB2, N=6 for 2 independent experiments; for siCEBPD1, N=5 for 2 independent experiments. * $P < 0.001$ compared with corresponding control.