

THE LANCET

Global Health

Supplementary appendix

This appendix formed part of the original submission and has been peer reviewed. We post it as supplied by the authors.

Supplement to: Garber K, Fox C, Abdalla M, et al. Estimating access to health care in Yemen, a complex humanitarian emergency setting: a descriptive applied geospatial analysis. *Lancet Glob Health* 2020; **8**: e1435–43.

Appendix

Appendix Table of Contents

Appendix Figures	Page
Figure 1a: Geocoded locations of functional or partially functional public primary health-care facilities and hospitals	3
Figure 1b: Updated population spatial distribution mapping for Yemen, 2018	4
Figure 1c: Updated digitized road network map for Yemen	5
Figure 2a: District-level headcount of Yemenis living greater than one-hour travel time from nearest functional or partially functional public primary health-care facility	6
Figure 2b: District-level headcount of Yemenis living greater than two-hour travel time from nearest functional or partially functional public hospital	7
Appendix Tables	
Table 1: Ranking of districts with poorest access to healthcare, by absolute headcount	8
Table 2: Population living within specified time of nearest health facility (%), by mode of access	9

Figure 1a: Geocoded locations of functional or partially functional public primary health-care facilities and hospitals

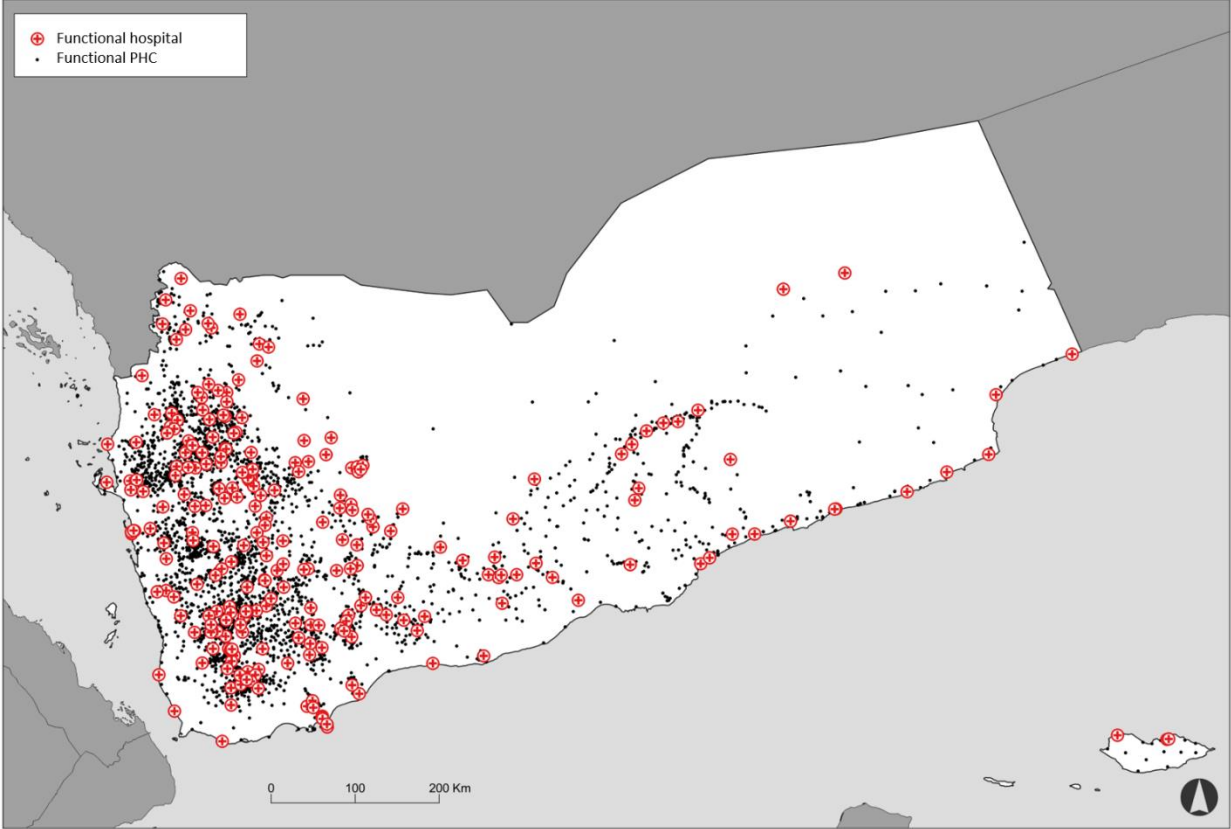


Figure 1b: Updated population spatial distribution mapping for Yemen, 2018

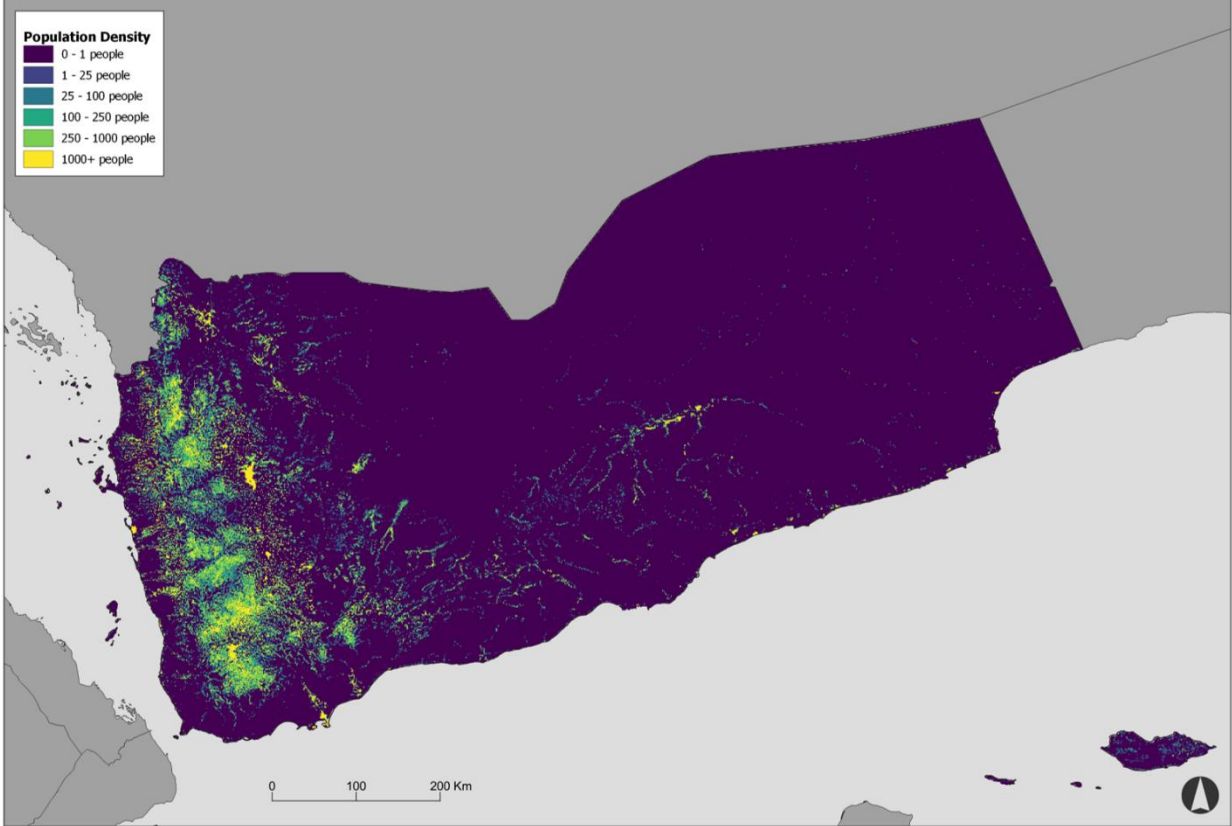


Figure 1c: Updated digitized road network map for Yemen

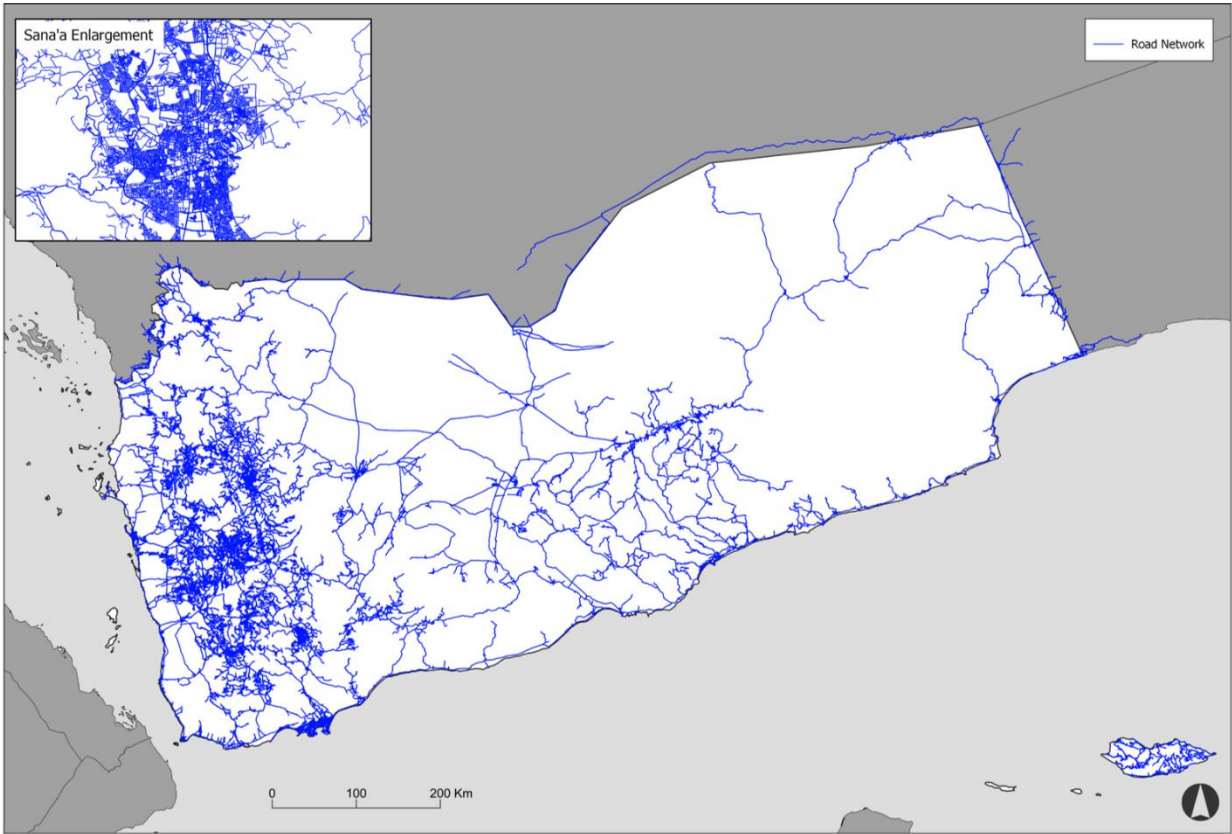


Figure 2a: District-level headcount of Yemenis living greater than one-hour travel time from nearest functional or partially functional public primary health-care facility

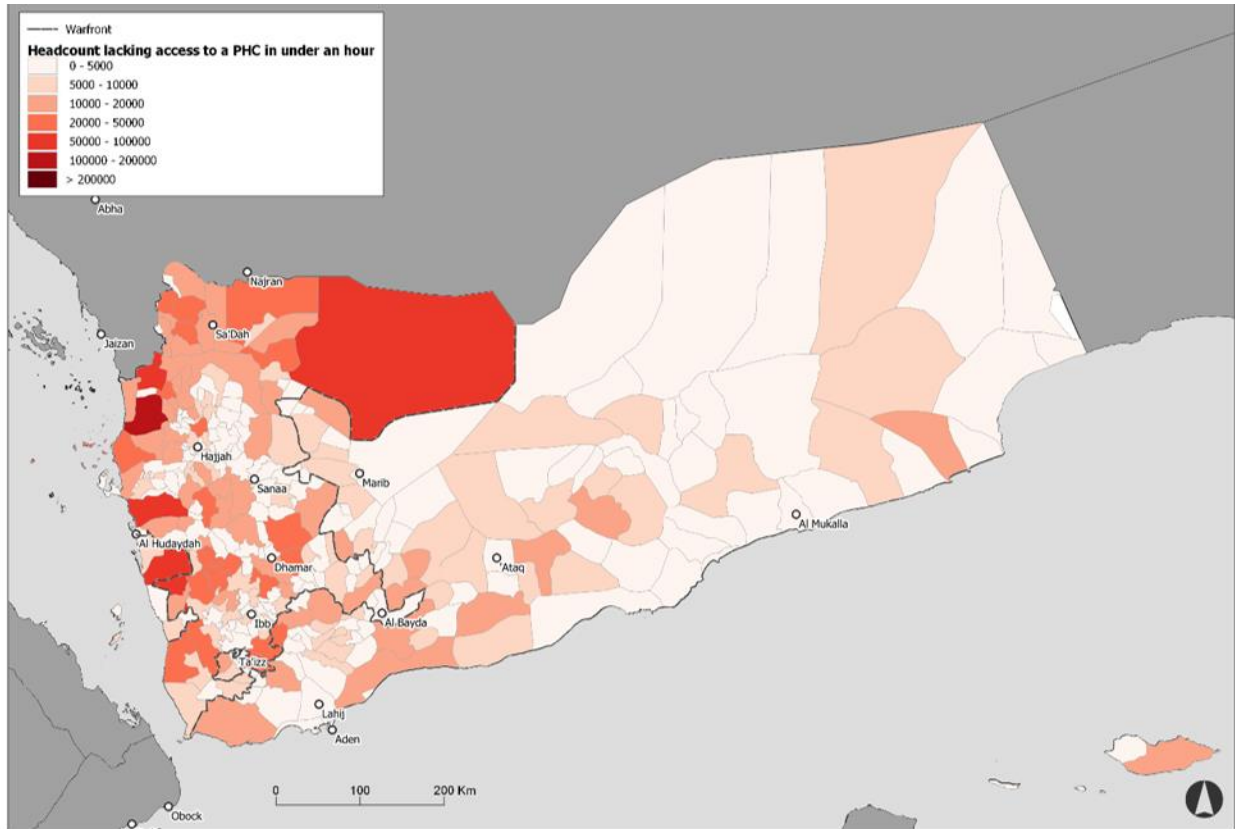
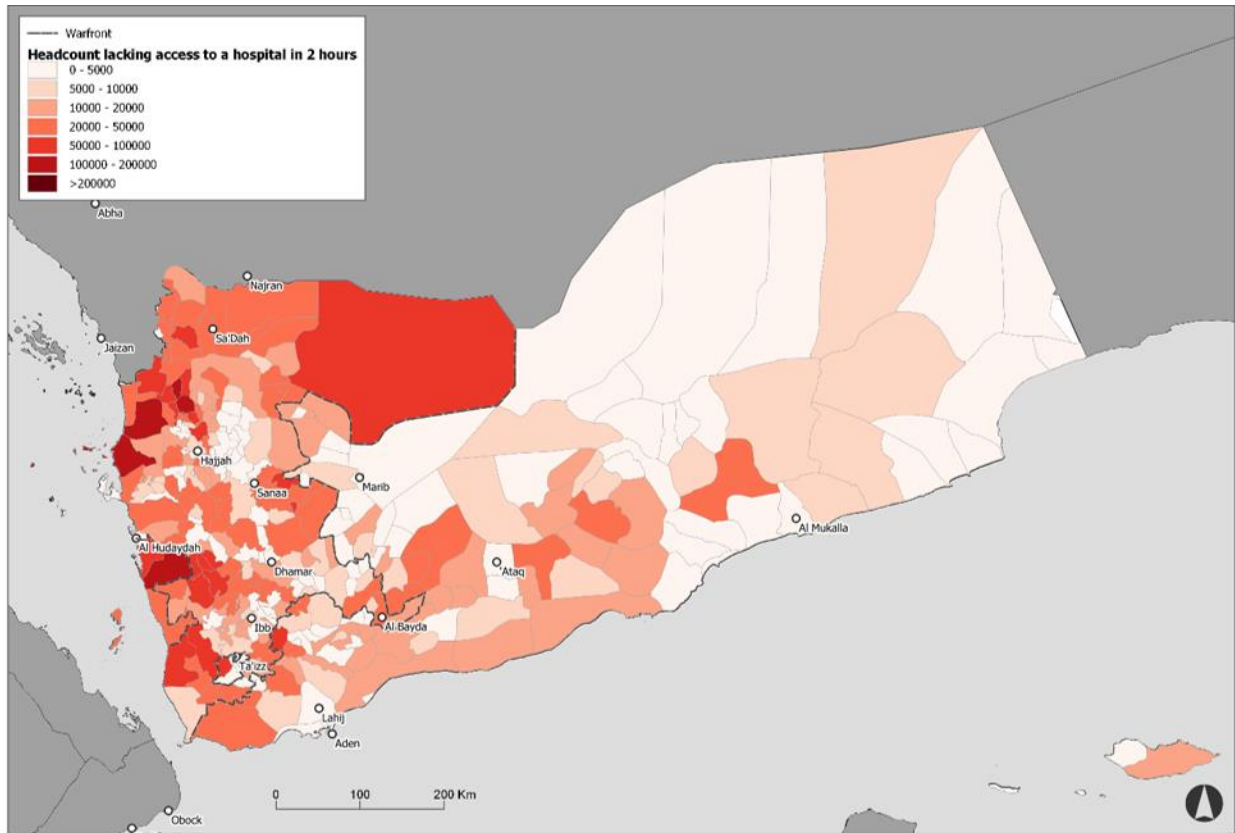


Figure 2b: District-level headcount of Yemenis living greater than two-hour travel time from nearest functional or partially functional public hospital



Appendix Table 1: Ranking of districts with poorest access to healthcare, by absolute headcount									
PHC					Hospital				
Rank	District	Governorate	# ppl living > 1h from nearest PHC	% district population	Rank	District	Governorate	# ppl living > 2h from nearest hospital	% district population
1	Abs	Hajjah	111,355	56.7%	1	Abs	Hajjah	131,997	68.1%
2	Bayt Al Faqiah	Al Hudaydah	68,389	38.5%	2	Washhah	Hajjah	122,390	100.0%
3	Zabid	Al Hudaydah	61,295	53.5%	3	Kushar	Hajjah	120,309	99.8%
4	Khabb wa ash Sha'af	Al Jawf	60,283	82.4%	4	Alluheyah	Al Hudaydah	115,383	71.3%
5	Harad	Hajjah	59,215	61.7%	5	Bayt Al Faqiah	Al Hudaydah	112,106	41.0%
6	Bajil	Al Hudaydah	55,982	47.0%	6	Wusab Al Ali	Dhamar	96,911	38.7%
7	Majz	Sa'dah	43,685	66.3%	7	Khabb wa ash Sha'af	Al Jawf	96,604	100.0%
8	Al Mukha	Ta'izz	43,592	86.4%	8	Mustaba	Hajjah	85,192	100.0%
9	Utмах	Dhamar	40,449	24.5%	9	Al Husha	Al Dali'	82,959	85.0%
10	Wusab Al Ali	Dhamar	34,398	21.9%	10	Ad Durayhimi	Al Hudaydah	80,220	100.0%

Travel time	Nearest PHC with vehicle access	Nearest PHC by foot	Nearest Hospital with vehicle	Nearest hospital by foot
< 30 minutes	69.4%	55%	37.4%	17%
< 60 minutes	90.9%	82%	57.6%	32%
< 120 minutes	98.4%	97%	80.5%	52%