

Results appendix to Measuring universal health coverage based on an index of effective coverage of health services in 204 countries and territories, 1990–2019: a systematic analysis for the Global Burden of Disease Study 2019

This appendix provides supplemental figures and tables.

List of supplementary figures and tables

Supplementary figure 1. Map of the UHC effective coverage index, by decile, in 1990. Deciles are based on the distribution of UHC effective coverage index values in 2019. Where lower and upper bounds of deciles appear to overlap, they should be interpreted as values up to but not equalling the upper bound in the preceding decile (ie, exclusive of the upper bound value) and values equalling the lower bound of the following decile (ie, inclusive of the lower bound value). UHC=universal health coverage.

Supplementary figure 2. Map of the UHC effective coverage index, by decile, in 2010. Deciles are based on the distribution of UHC effective coverage index values in 2019. Where lower and upper bounds of deciles appear to overlap, they should be interpreted as values up to but not equalling the upper bound in the preceding decile (ie, exclusive of the upper bound value) and values equalling the lower bound of the following decile (ie, inclusive of the lower bound value). UHC=universal health coverage.

Supplementary figure 3. UHC effective coverage index frontier relative to total health spending per capita (A) and log-transformed total health spending per capita (B). Total health spending per capita includes government health expenditures, prepaid private expenditures, out-of-pocket expenditures, and development assistance for health. All health spending estimates are for 2017 measured in 2019 PPP dollars adjusted for inflation. The black line represents the frontier values estimated for UHC effective coverage in 2019 relative to spending per capita in 2017. Locations are colour-coded by GBD super-region, with a subset abbreviated according to their ISO3 codes. UHC=universal health coverage. GBD=Global Burden of Disease. PPP=purchasing-power parity.

Supplementary figure 4. UHC effective coverage index frontier relative to domestic pooled health spending per capita (A) and log-transformed domestic pooled health spending per capita (B). Domestic pooled health spending per capita includes government health expenditures and prepaid private expenditures. All health spending estimates are for 2017 measured in 2019 PPP dollars adjusted for inflation. The black line represents the frontier values estimated for UHC effective coverage in 2019 relative to spending per capita in 2017. Locations are colour-coded by GBD super-region, with a subset abbreviated according to their ISO3 codes. UHC=universal health coverage. GBD=Global Burden of Disease. PPP=purchasing-power parity.

Supplementary figure 5. Comparing the UHC effective coverage index in 2019 with GBD 2017 UHC service coverage index in 2017. Locations are colour-coded by GBD super-region, and are abbreviated according to their ISO3 codes. UHC=universal health coverage. GBD=Global Burden of Disease.

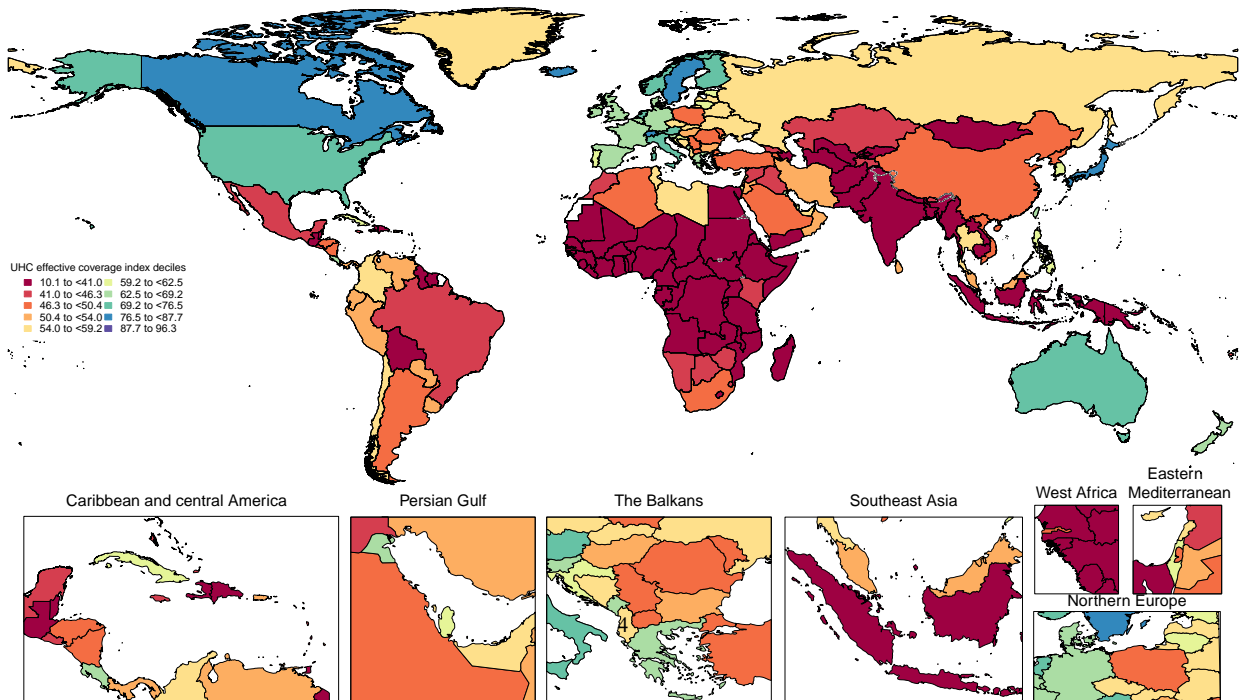
Supplementary figure 6. Comparing the UHC effective coverage index in 2019 with UHC SCI in 2017. Locations are colour-coded by GBD super-region, and are abbreviated according to their ISO3 codes. UHC SCI is used to measure SDG indicator 3.8.1 for UHC service coverage, with WHO as its custodial agency. UHC=universal health coverage. SCI=service coverage index. GBD=Global Burden of Disease. SDG=Sustainable Development Goal.

Supplementary figure 7. Comparing the UHC effective coverage index in 2019 with the World Bank service coverage index. Locations are colour-coded by GBD super-region, and are abbreviated according to their ISO3 codes. The World Bank's service coverage index is reported for the most recent year for each country. UHC=universal health coverage. GBD=Global Burden of Disease.

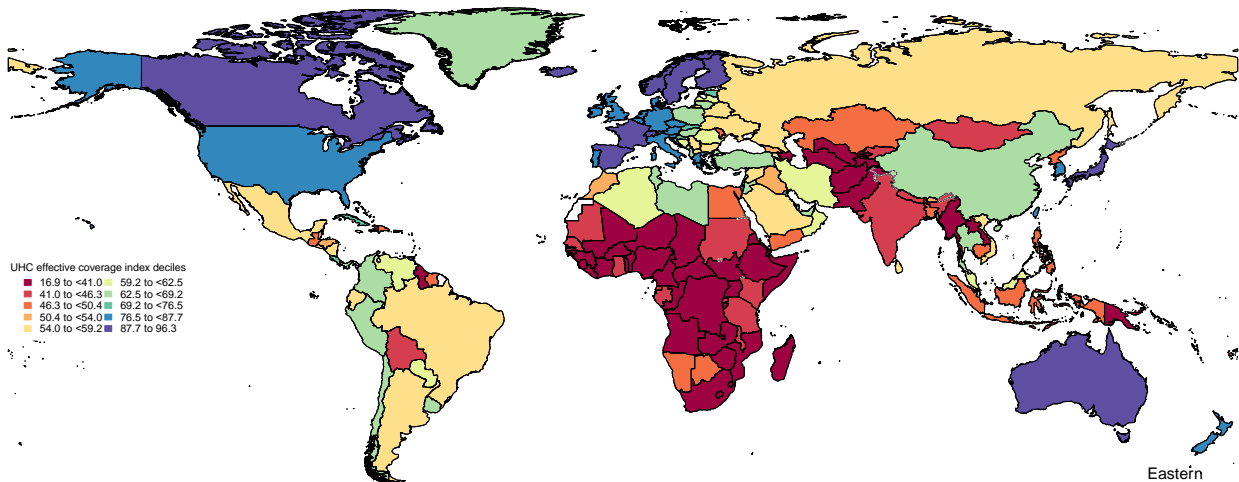
Supplementary table 1. Health gain weights, by effective coverage indicator, for each location in 2019. Estimation of health gain weights are further detailed within the methods appendix. FP=family planning. MCV1=measles-containing vaccine, 1 dose. DTP3=diphtheria, tetanus, pertussis vaccine, 3 doses. LRI=lower respiratory infection. ART=antiretroviral therapy. TB=tuberculosis. IHD=ischaemic heart disease. CKD=chronic kidney disease. COPD=chronic obstructive pulmonary disease.

Supplementary table 2. UHC effective coverage index values for 1990, 2010, and 2019, and annualised rates of change for 1990-2019, 1990-2010, and 2010-2019. All estimates are accompanied by 95% uncertainty intervals in parentheses. Annualised rate of change is reported in terms of percentages. UHC=universal health coverage.

Supplementary figure 1. Map of the UHC effective coverage index, by decile, in 1990. Deciles are based on the distribution of UHC effective coverage index values in 2019. Where lower and upper bounds appear to overlap, they should be interpreted as values up to but not equaling the upper bound in the preceding decile (ie, exclusive of the upper bound value) and values equalling the lower bound of the following decile (ie, inclusive of the lower bound value). UHC=universal health coverage.



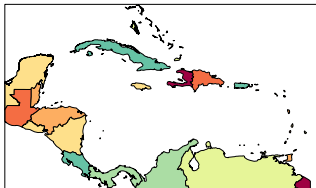
Supplementary figure 2. Map of the UHC effective coverage index, by decile, in 2010. Deciles are based on the distribution of UHC effective coverage index values in 2019. Where lower and upper bounds of deciles appear to overlap, they should be interpreted as values up to but not equalling the upper bound in the preceding decile (ie, exclusive of the upper bound value) and values equalling the lower bound of the following decile (ie, inclusive of the lower bound value). UHC=universal health coverage.



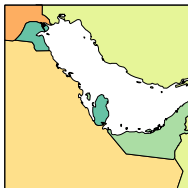
UHC effective coverage index deciles

- 16.9 to <41.0
- 41.0 to <46.3
- 46.3 to <50.4
- 50.4 to <54.0
- 54.0 to <59.2
- 59.2 to <62.5
- 62.5 to <69.2
- 69.2 to <76.5
- 76.5 to <87.7
- 87.7 to 96.3

Caribbean and central America



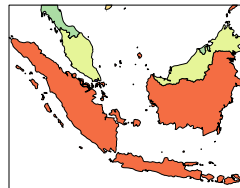
Persian Gulf



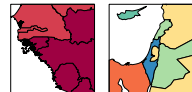
The Balkans



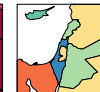
Southeast Asia



West Africa



Mediterranean

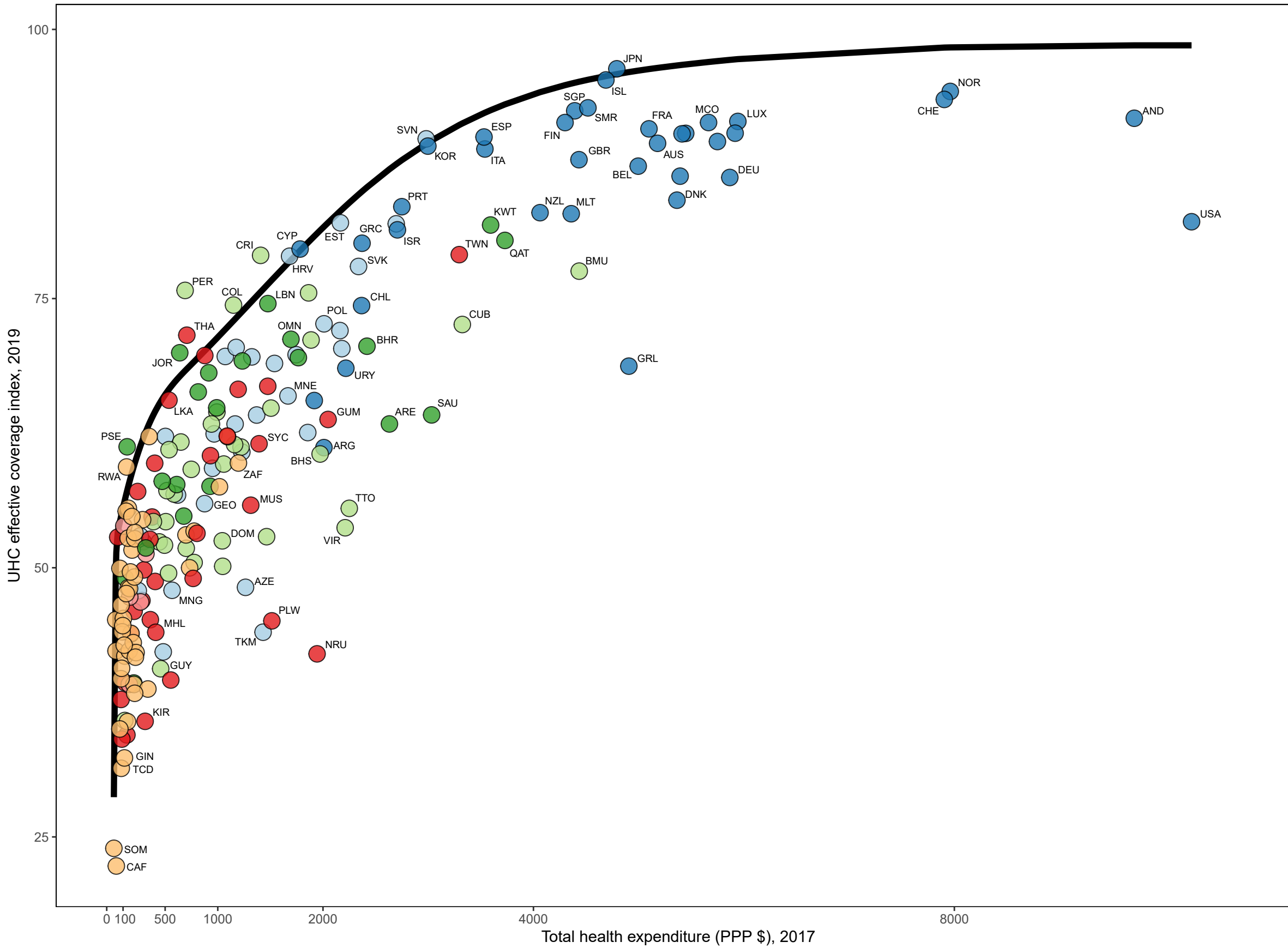


Northern Europe

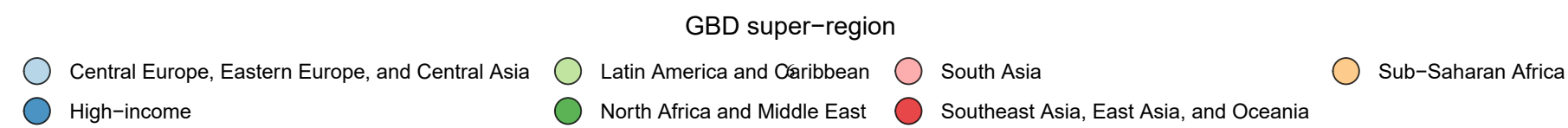
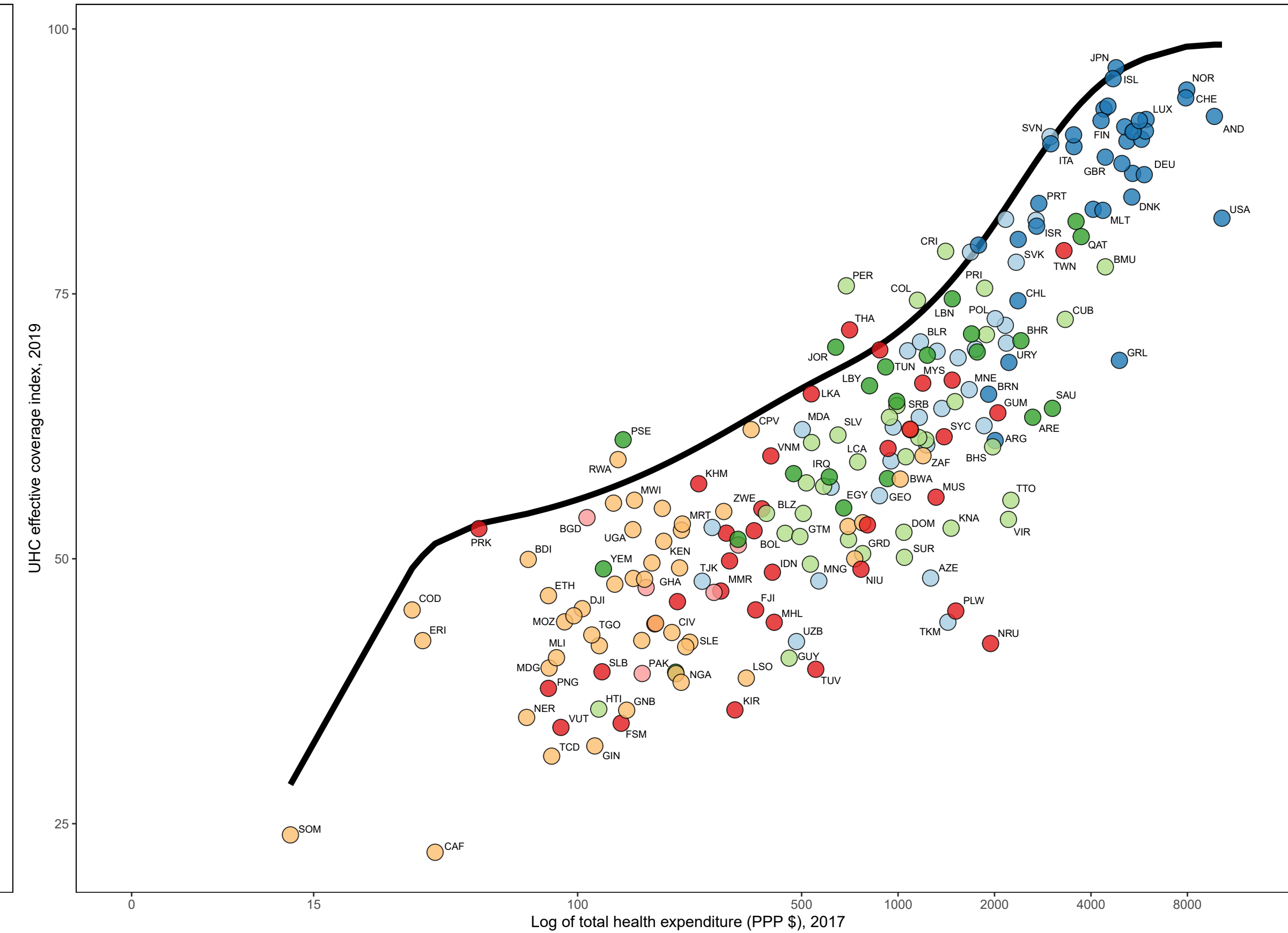


Supplementary figure 3. UHC effective coverage index frontier relative to total health spending per capita (A) and log-transformed total health spending per capita (B). Total health spending per capita includes government health expenditures, prepaid private expenditures, out-of-pocket expenditures, and development assistance for health. All health spending estimates are for 2017 measured in 2019 PPP dollars adjusted for inflation. The black line represents the frontier values estimated for UHC effective coverage in 2019 relative to spending per capita in 2017. Locations are colour-coded by GBD super-region, with a subset abbreviated according to their ISO3 codes. UHC=universal health coverage. GBD=Global Burden of Disease. PPP=purchasing-power parity.

A) UHC effective coverage index relative to total health expenditure per capita

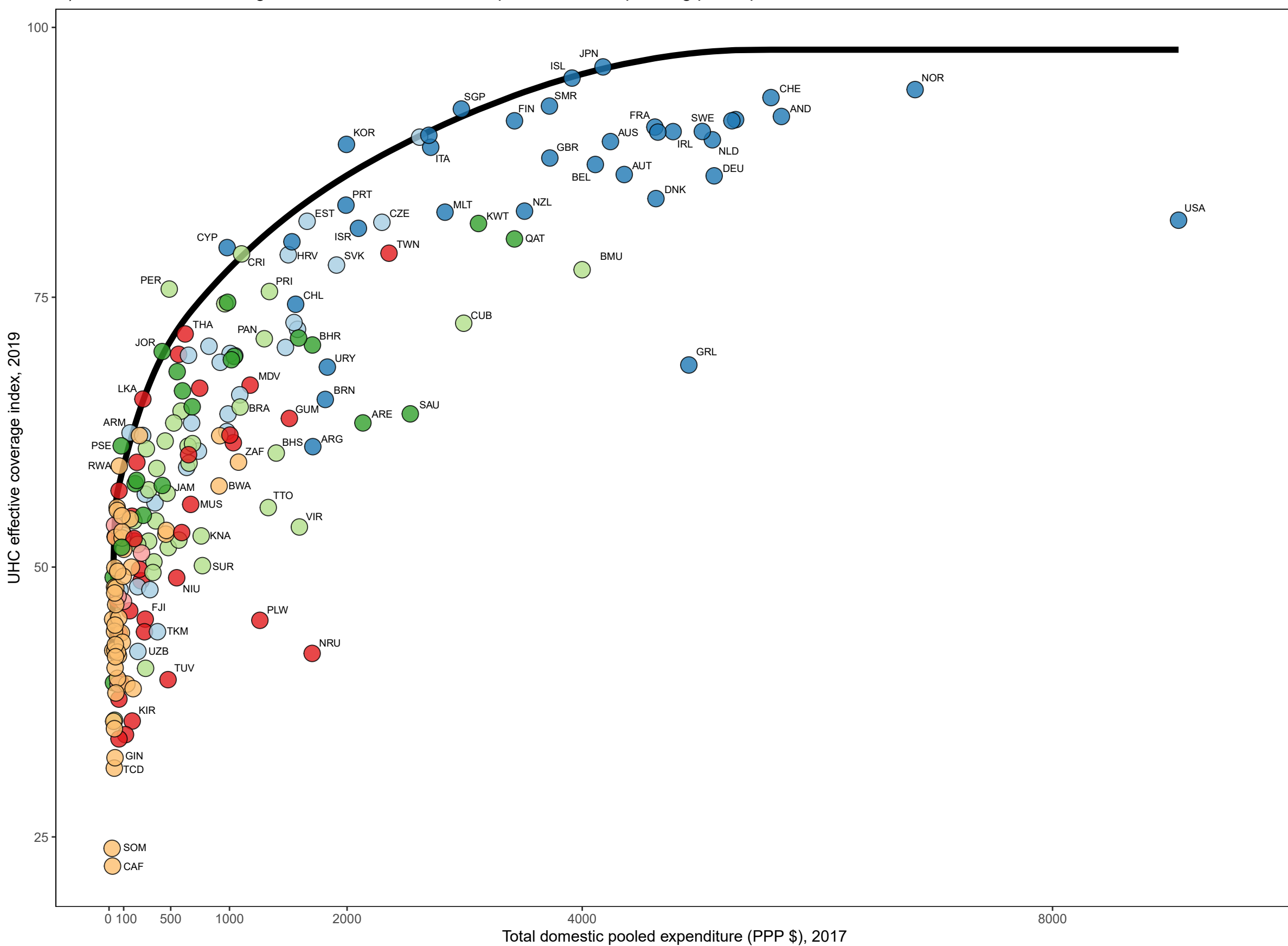


B) UHC effective coverage index relative to log-transformed total health expenditure per capita

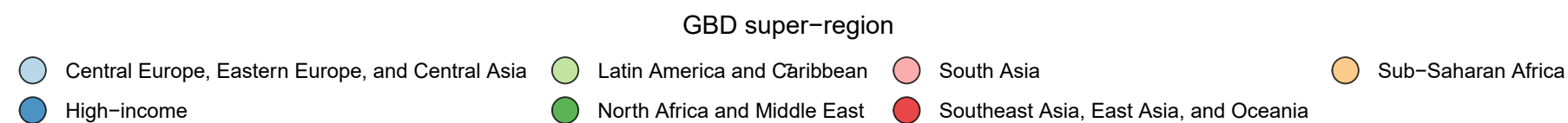
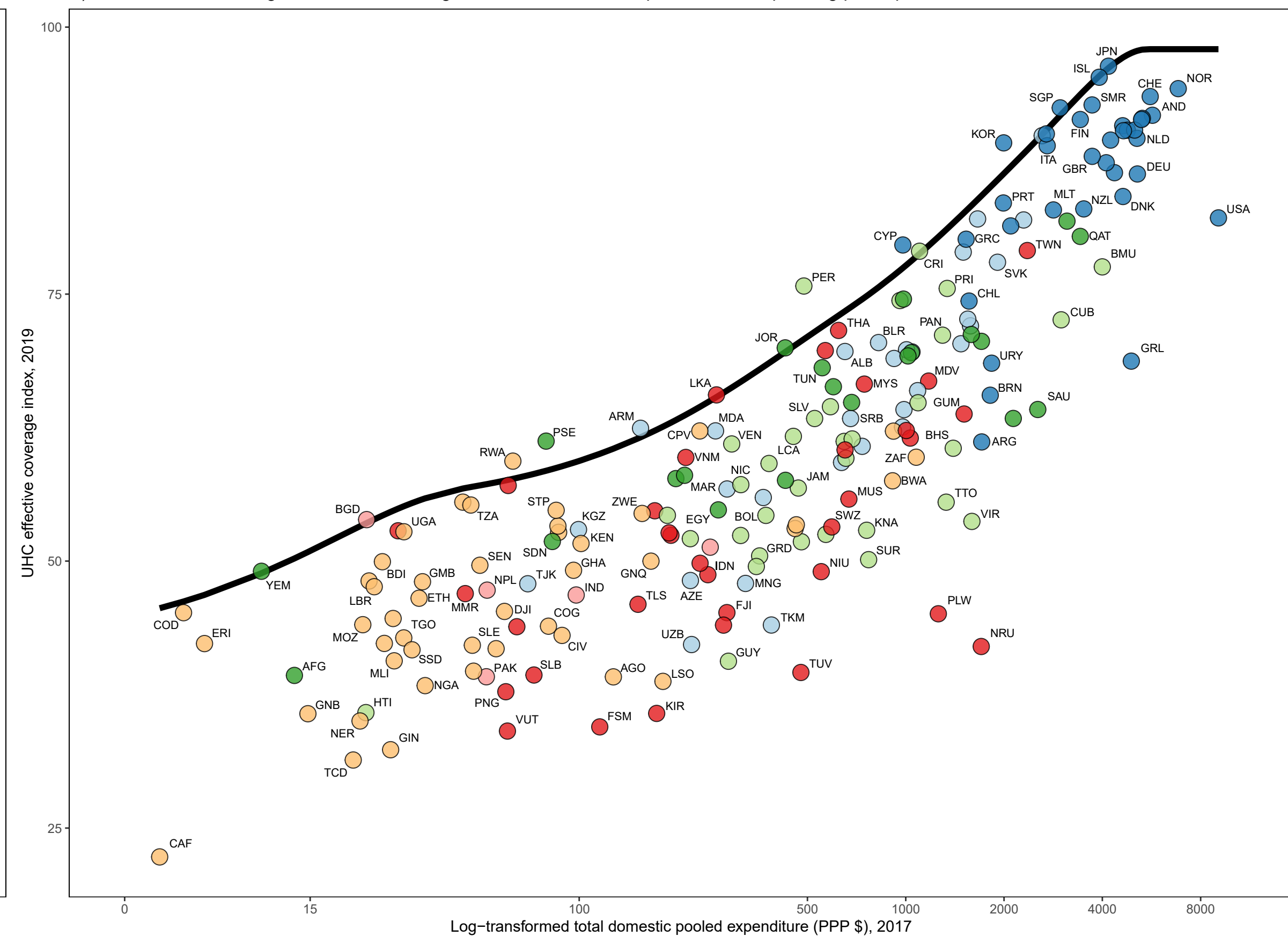


Supplementary figure 4. UHC effective coverage index frontier relative to domestic pooled health spending per capita (A) and log-transformed domestic pooled health spending per capita (B). Domestic pooled health spending per capita includes government health expenditures and prepaid private expenditures. All health spending estimates are for 2017 measured in 2019 PPP dollars adjusted for inflation. The black line represents the frontier values estimated for UHC effective coverage in 2019 relative to spending per capita in 2017. Locations are colour-coded by GBD super-region, with a subset abbreviated according to their ISO3 codes. UHC=universal health coverage. GBD=Global Burden of Disease. PPP=purchasing-power parity.

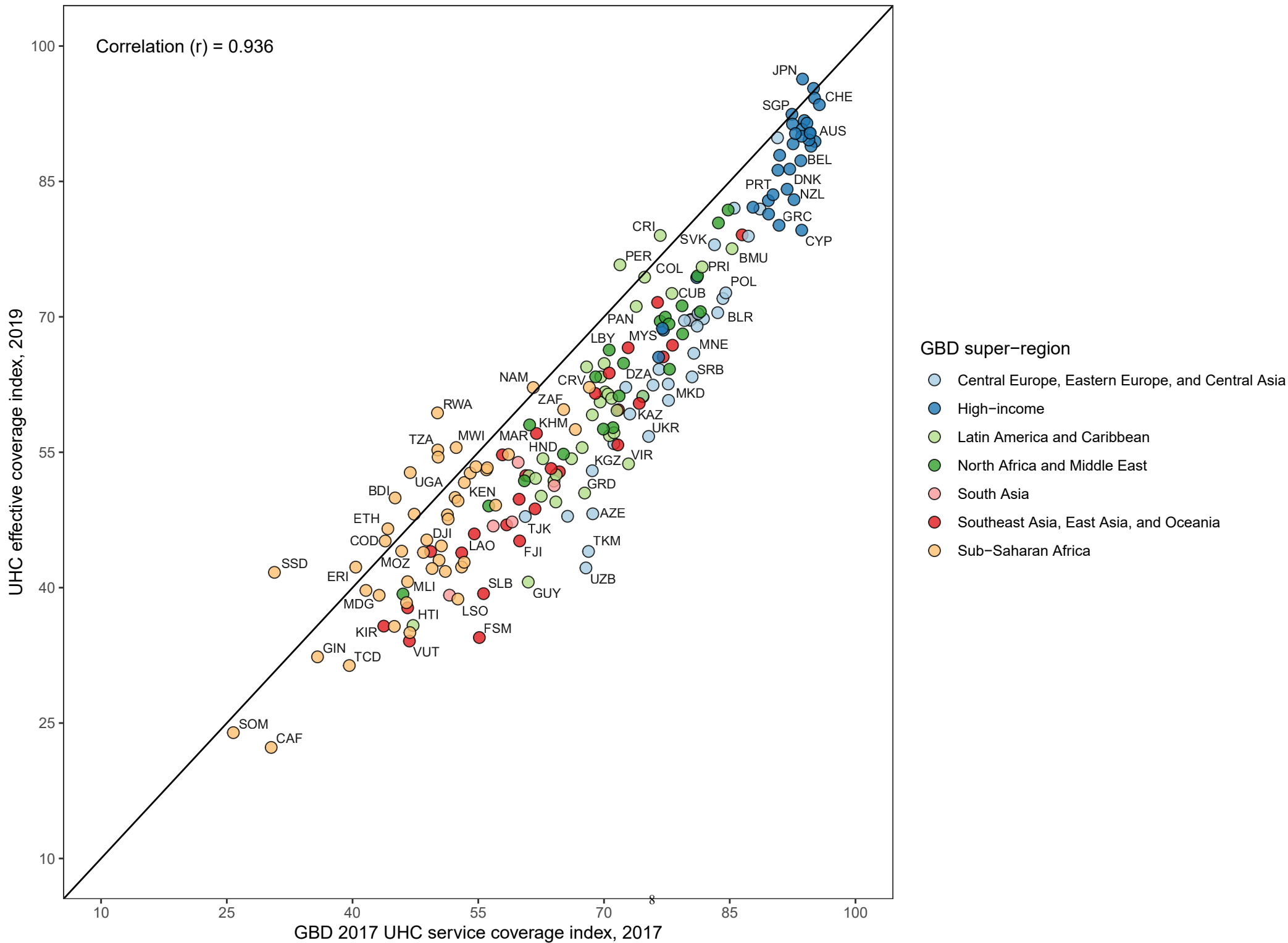
A) UHC effective coverage index relative to domestic pooled health spending per capita



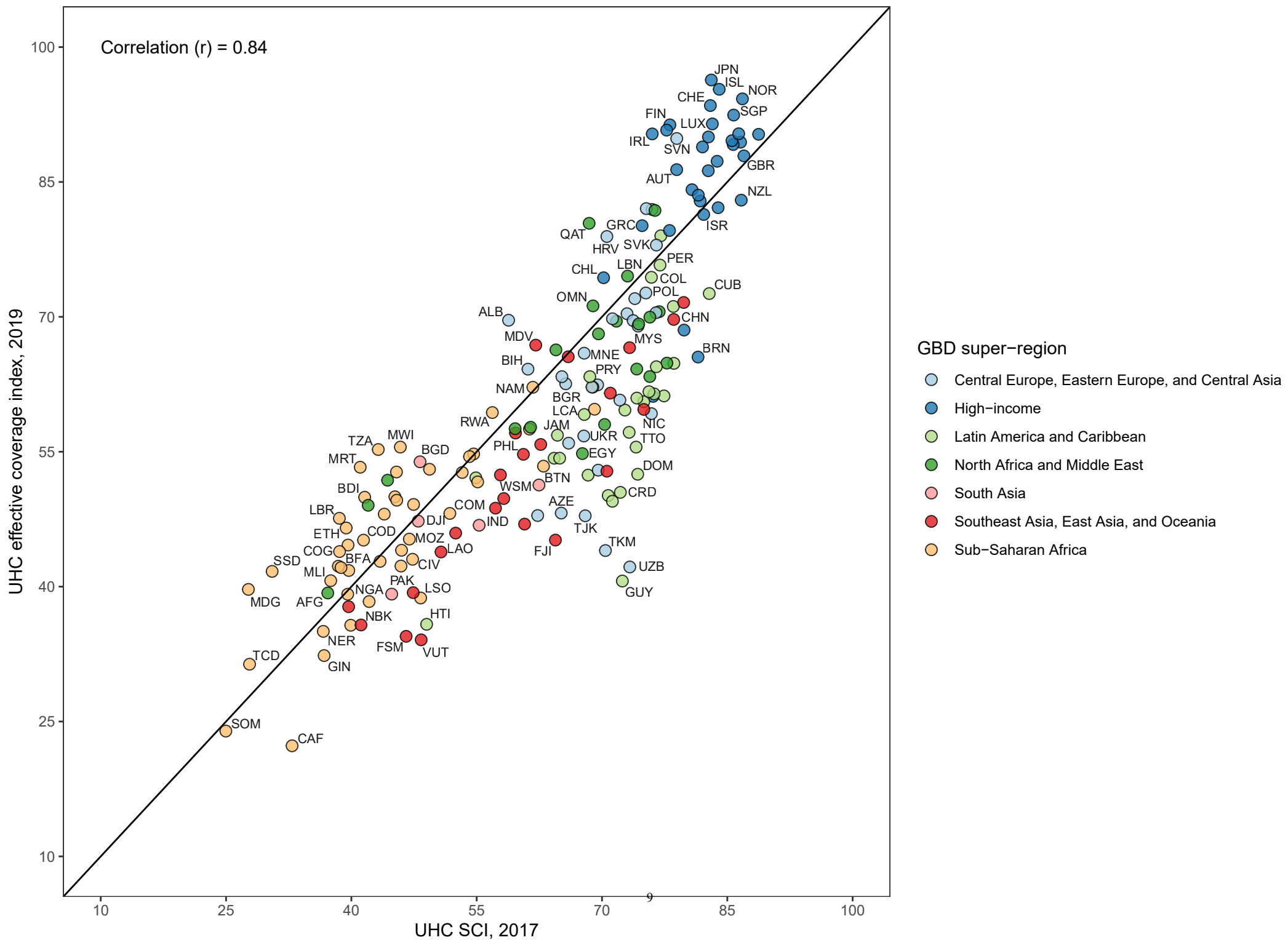
B) UHC effective coverage index relative to log-transformed domestic pooled health spending per capita



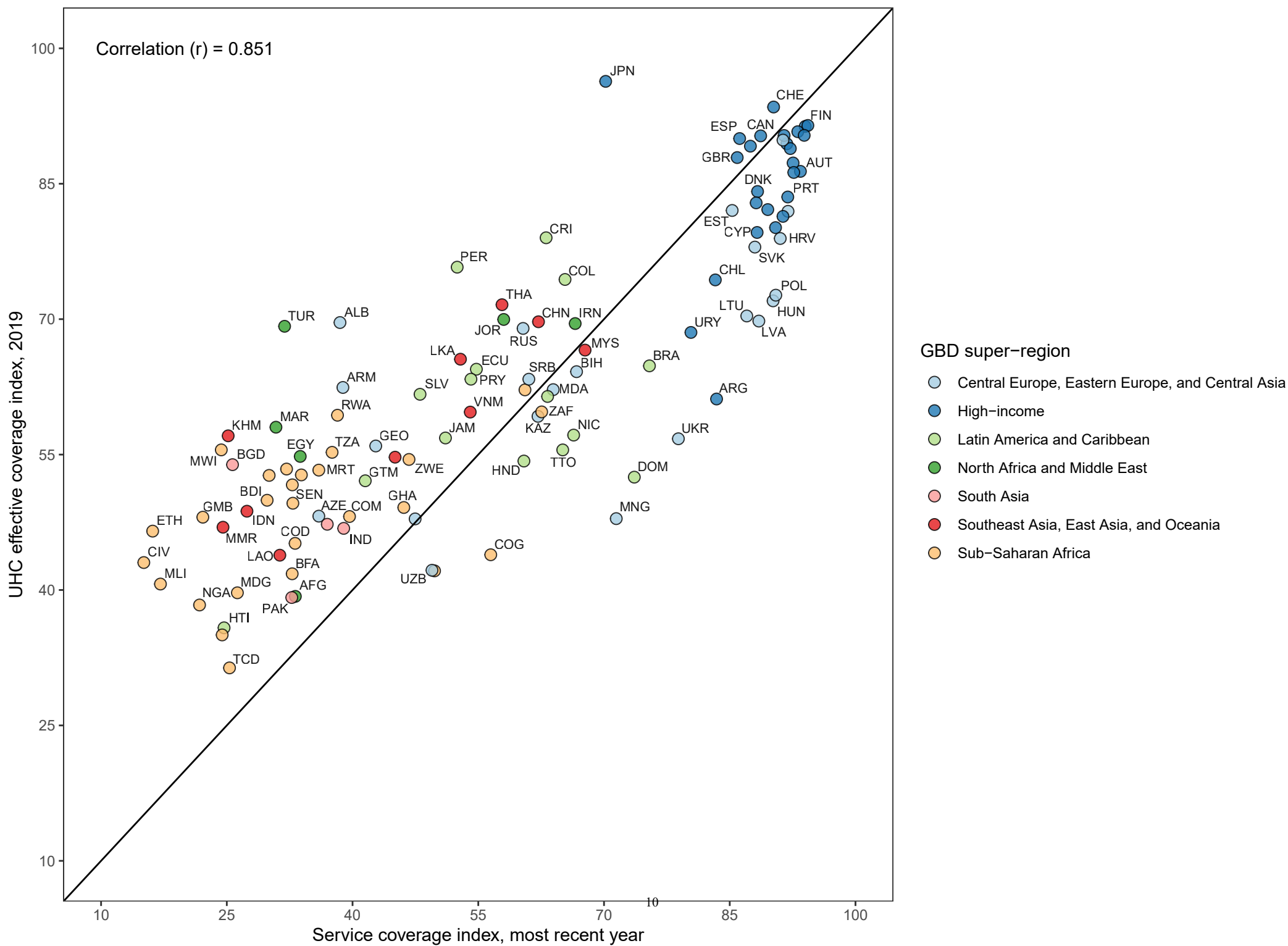
Supplementary figure 5. Comparing the UHC effective coverage index in 2019 with GBD 2017 UHC service coverage index in 2017. Locations are colour-coded by GBD super-region, and are abbreviated according to their ISO3 codes. UHC=universal health coverage. GBD=Global Burden of Disease.



Supplementary figure 6. Comparing the UHC effective coverage index in 2019 with UHC SCI in 2017. Locations are colour-coded by GBD super-region, and are abbreviated according to their ISO3 codes. UHC SCI is used to measure SDG indicator 3.8.1 for UHC service coverage, with WHO as its custodial agency. UHC=universal health coverage. SCI=service coverage index. GBD=Global Burden of Disease. SDG=Sustainable Development Goal.



Supplementary figure 7. Comparing the UHC effective coverage index in 2019 with the World Bank service coverage index. Locations are colour-coded by GBD super-region, and are abbreviated according to their ISO3 codes. The World Bank's service coverage index is reported for the most recent year for each country. UHC=universal health coverage. GBD=Global Burden of Disease.



	Met need for FP with modern contraception	Antenatal, peripartum and postnatal care for newborns	Antenatal, postpartum and postnatal care for mothers	MCV1 coverage	DTP3 coverage	Diarrhoea treatment	LR1 treatment	ART coverage	TB treatment	Acute lymphoid leukaemia treatment	Breast cancer treatment	Cervical cancer treatment	Uterine cancer treatment	Colon/rectum cancer treatment	IHD treatment	Stroke treatment	Diabetes treatment	CKD treatment	COPD treatment	Asthma treatment	Epilepsy treatment	Appendicitis treatment
Tanzania	0.001	0.067	0.067	0.067	0.067	0.067	0.067	0.138	0.071	0.001	0.004	0.004	0.001	0.004	0.134	0.134	0.007	0.071	0.004	0.004	0.008	0.002
Thailand	0.002	0.010	0.002	0.010	0.010	0.060	0.071	0.119	0.003	0.070	0.061	0.012	0.070	0.070	0.119	0.119	0.070	0.119	0.020	0.002	0.013	0.005
The Bahamas	0.001	0.062	0.009	0.001	0.001	0.062	0.062	0.079	0.010	0.002	0.070	0.063	0.010	0.070	0.123	0.123	0.070	0.123	0.017	0.009	0.011	0.011
The Gambia	0.005	0.066	0.066	0.066	0.066	0.066	0.066	0.071	0.132	0.001	0.005	0.005	0.001	0.005	0.132	0.132	0.009	0.071	0.009	0.005	0.010	0.002
Timor-Leste	0.001	0.064	0.006	0.006	0.064	0.064	0.064	0.076	0.128	0.002	0.008	0.008	0.002	0.013	0.128	0.128	0.070	0.128	0.013	0.006	0.009	0.004
Togo	0.001	0.067	0.067	0.004	0.067	0.067	0.067	0.138	0.071	0.001	0.005	0.067	0.001	0.005	0.133	0.133	0.008	0.071	0.008	0.004	0.009	0.002
Tokelau	0.001	0.058	0.012	0.058	0.012	0.058	0.058	0.060	0.070	0.002	0.070	0.013	0.013	0.025	0.116	0.116	0.116	0.070	0.025	0.012	0.015	0.004
Tonga	0.001	0.060	0.010	0.010	0.060	0.060	0.060	0.012	0.070	0.003	0.070	0.019	0.011	0.011	0.121	0.121	0.121	0.121	0.019	0.010	0.012	0.004
Trinidad and Tobago	0.001	0.062	0.001	0.001	0.001	0.062	0.062	0.064	0.010	0.002	0.070	0.017	0.017	0.070	0.123	0.123	0.123	0.123	0.017	0.009	0.011	0.011
Tunisia	0.001	0.061	0.009	0.009	0.009	0.061	0.061	0.011	0.010	0.002	0.070	0.010	0.010	0.070	0.123	0.123	0.123	0.123	0.070	0.009	0.011	0.011
Turkey	0.001	0.059	0.001	0.011	0.011	0.059	0.059	0.004	0.012	0.003	0.070	0.012	0.012	0.070	0.119	0.119	0.070	0.119	0.011	0.011	0.023	0.013
Turkmenistan	0.001	0.066	0.004	0.001	0.001	0.066	0.066	0.068	0.071	0.001	0.071	0.067	0.005	0.071	0.133	0.133	0.071	0.071	0.009	0.004	0.010	0.006
Tuvalu	0.001	0.060	0.010	0.010	0.010	0.060	0.060	0.062	0.070	0.002	0.070	0.012	0.012	0.021	0.120	0.120	0.120	0.070	0.070	0.010	0.013	0.003
UK	0.001	0.009	0.001	0.001	0.001	0.009	0.009	0.011	0.010	0.010	0.123	0.010	0.018	0.123	0.123	0.123	0.123	0.123	0.009	0.011	0.011	0.011
USA	0.001	0.010	0.001	0.001	0.001	0.010	0.010	0.062	0.010	0.001	0.122	0.020	0.020	0.122	0.122	0.122	0.071	0.122	0.010	0.011	0.011	0.011
Uganda	0.001	0.068	0.068	0.068	0.068	0.068	0.068	0.139	0.071	0.001	0.004	0.068	0.001	0.004	0.071	0.135	0.006	0.071	0.004	0.003	0.007	0.002
Ukraine	0.001	0.064	0.001	0.001	0.001	0.064	0.064	0.065	0.071	0.001	0.071	0.071	0.013	0.128	0.128	0.128	0.071	0.071	0.013	0.007	0.008	0.008
United Arab Emirates	0.000	0.065	0.006	0.000	0.065	0.065	0.065	0.066	0.066	0.001	0.071	0.006	0.006	0.071	0.131	0.131	0.071	0.071	0.071	0.006	0.071	0.006
Uruguay	0.001	0.057	0.001	0.001	0.001	0.013	0.057	0.059	0.015	0.003	0.114	0.070	0.027	0.114	0.114	0.114	0.027	0.070	0.070	0.013	0.016	0.016
Uzbekistan	0.001	0.065	0.005	0.001	0.001	0.065	0.065	0.067	0.071	0.001	0.071	0.066	0.006	0.071	0.131	0.131	0.071	0.071	0.011	0.005	0.011	0.007
Vanuatu	0.001	0.064	0.006	0.006	0.064	0.064	0.064	0.066	0.071	0.002	0.071	0.007	0.007	0.007	0.128	0.128	0.071	0.071	0.071	0.006	0.014	0.002
Venezuela	0.002	0.060	0.010	0.002	0.060	0.060	0.060	0.063	0.012	0.003	0.070	0.070	0.012	0.070	0.120	0.120	0.070	0.120	0.020	0.010	0.013	0.013
Vietnam	0.001	0.059	0.001	0.011	0.011	0.059	0.059	0.062	0.119	0.003	0.070	0.021	0.003	0.070	0.119	0.119	0.070	0.070	0.021	0.011	0.013	0.013
Virgin Islands	0.001	0.061	0.001	0.001	0.009	0.009	0.009	0.064	0.010	0.002	0.122	0.018	0.010	0.122	0.122	0.122	0.122	0.122	0.018	0.009	0.011	0.011
Yemen	0.001	0.068	0.068	0.068	0.068	0.068	0.068	0.004	0.071	0.001	0.068	0.004	0.001	0.004	0.135	0.135	0.071	0.071	0.007	0.003	0.007	0.007
Zambia	0.000	0.069	0.003	0.069	0.069	0.069	0.069	0.140	0.137	0.001	0.003	0.069	0.001	0.003	0.071	0.137	0.005	0.071	0.003	0.003	0.005	0.001
Zimbabwe	0.000	0.069	0.002	0.069	0.069	0.069	0.069	0.207	0.138	0.001	0.002	0.002	0.001	0.002	0.138	0.071	0.004	0.071	0.004	0.002	0.005	0.001

Supplementary table 2. UHC effective coverage index values for 1990, 2010, and 2019, and annualised rates of change for 1990-2019, 1990-2010, and 2010-2019. All estimates are accompanied by 95% uncertainty intervals in parentheses. Annualised rate of change is reported in terms of percentages. UHC=universal health coverage.

	UHC effective coverage index			Annualised rate of change (%)		
	1990	2010	2019	1990-2019	1990-2010	2010-2019
Global	45.8	55.7	60.3	0.9	1.0	0.9
	(44.2 to 47.5)	(54.4 to 57.0)	(58.7 to 61.9)	(0.8 to 1.1)	(0.8 to 1.1)	(0.6 to 1.2)
Central Europe, eastern Europe, and central Asia	51.3	57.0	64.0	0.8	0.5	1.3
	(49.8 to 52.7)	(55.7 to 58.2)	(61.5 to 66.6)	(0.6 to 0.9)	(0.4 to 0.6)	(0.8 to 1.8)
Central Asia	39.3	41.9	49.0	0.8	0.3	1.7
	(37.3 to 41.3)	(40.1 to 43.7)	(47.3 to 50.8)	(0.5 to 1.0)	(0.1 to 0.5)	(1.1 to 2.3)
Armenia	46.9	55.7	62.4	1.0	0.8	1.3
	(44.8 to 49.1)	(54.0 to 57.2)	(59.5 to 65.6)	(0.8 to 1.2)	(0.7 to 1.0)	(0.8 to 1.8)
Azerbaijan	32.0	40.3	48.2	1.4	1.2	2.0
	(29.2 to 34.6)	(38.3 to 42.5)	(44.9 to 51.5)	(1.0 to 1.8)	(0.8 to 1.6)	(1.0 to 2.8)
Georgia	43.6	53.2	55.9	0.8	1.0	0.5
	(41.8 to 45.9)	(50.6 to 55.9)	(52.8 to 59.6)	(0.6 to 1.1)	(0.7 to 1.3)	(-0.2 to 1.4)
Kazakhstan	44.8	50.0	59.3	1.0	0.6	1.9
	(42.4 to 47.1)	(47.6 to 52.0)	(56.2 to 62.1)	(0.7 to 1.2)	(0.3 to 0.8)	(1.3 to 2.5)
Kyrgyzstan	35.0	42.8	52.9	1.4	1.0	2.4
	(32.3 to 38.0)	(40.6 to 45.0)	(49.9 to 56.1)	(1.1 to 1.7)	(0.7 to 1.3)	(1.7 to 3.0)
Mongolia	27.4	42.3	47.9	1.9	2.2	1.4
	(22.6 to 31.5)	(38.6 to 45.9)	(44.2 to 51.7)	(1.3 to 2.7)	(1.3 to 3.2)	(0.3 to 2.5)
Tajikistan	41.6	40.4	47.9	0.5	-0.2	1.9
	(38.9 to 44.5)	(37.4 to 43.8)	(44.7 to 51.0)	(0.1 to 0.8)	(-0.6 to 0.3)	(0.7 to 3.0)
Turkmenistan	31.8	39.0	44.0	1.1	1.0	1.3
	(29.7 to 34.4)	(35.0 to 42.0)	(39.9 to 47.9)	(0.6 to 1.6)	(0.5 to 1.4)	(-0.1 to 2.9)
Uzbekistan	38.1	35.7	42.2	0.4	-0.3	1.9
	(35.4 to 40.4)	(32.8 to 38.4)	(39.2 to 45.1)	(0.0 to 0.7)	(-0.7 to 0.1)	(0.7 to 3.1)
Central Europe	52.2	66.6	71.9	1.1	1.2	0.9
	(50.7 to 53.6)	(65.3 to 67.8)	(68.1 to 75.3)	(0.9 to 1.3)	(1.1 to 1.3)	(0.2 to 1.4)
Albania	54.5	68.4	69.7	0.8	1.1	0.2
	(52.6 to 56.2)	(65.8 to 71.1)	(64.5 to 74.5)	(0.5 to 1.1)	(0.9 to 1.4)	(-0.6 to 1.0)
Bosnia and Herzegovina	54.2	61.6	64.3	0.6	0.6	0.5
	(52.1 to 56.1)	(59.7 to 63.3)	(59.3 to 68.7)	(0.3 to 0.9)	(0.5 to 0.8)	(-0.4 to 1.3)
Bulgaria	52.4	56.3	62.6	0.6	0.4	1.2
	(50.7 to 54.3)	(54.4 to 58.0)	(58.0 to 67.1)	(0.3 to 0.9)	(0.2 to 0.5)	(0.3 to 2.0)
Croatia	61.0	73.2	79.0	0.9	0.9	0.8
	(59.3 to 62.7)	(71.6 to 74.6)	(74.0 to 83.3)	(0.7 to 1.1)	(0.8 to 1.0)	(0.1 to 1.5)
Czech Republic	55.9	77.7	82.1	1.3	1.6	0.6
	(54.4 to 57.4)	(76.3 to 79.0)	(77.6 to 85.9)	(1.1 to 1.5)	(1.5 to 1.8)	(-0.0 to 1.2)
Hungary	53.8	67.1	72.0	1.0	1.1	0.8
	(52.0 to 55.4)	(65.6 to 68.6)	(67.5 to 76.3)	(0.8 to 1.2)	(1.0 to 1.2)	(0.1 to 1.4)
Montenegro	63.3	63.5	66.0	0.1	0.0	0.4
	(61.4 to 65.2)	(61.9 to 65.1)	(62.5 to 69.4)	(-0.1 to 0.3)	(-0.1 to 0.2)	(-0.2 to 1.0)
North Macedonia	49.6	55.7	60.8	0.7	0.6	1.0
	(47.3 to 51.7)	(53.9 to 57.4)	(55.9 to 65.4)	(0.4 to 1.0)	(0.4 to 0.8)	(0.0 to 1.8)
Poland	49.8	68.3	72.7	1.3	1.6	0.7
	(48.2 to 51.5)	(66.8 to 69.6)	(64.3 to 80.5)	(0.9 to 1.7)	(1.5 to 1.7)	(-0.7 to 1.8)
Romania	50.1	62.6	69.6	1.1	1.1	1.2
	(48.1 to 52.0)	(60.8 to 64.0)	(66.3 to 72.7)	(0.9 to 1.4)	(1.0 to 1.2)	(0.5 to 1.8)
Serbia	49.2	57.0	63.3	0.9	0.7	1.2
	(47.1 to 51.0)	(55.3 to 58.6)	(58.6 to 67.9)	(0.6 to 1.2)	(0.6 to 0.9)	(0.3 to 2.0)
Slovakia	56.2	72.3	78.1	1.1	1.3	0.8
	(54.6 to 57.8)	(71.0 to 73.8)	(73.2 to 82.5)	(0.9 to 1.3)	(1.2 to 1.4)	(0.1 to 1.4)
Slovenia	67.1	84.9	90.0	1.0	1.2	0.6
	(62.3 to 71.4)	(83.4 to 86.3)	(85.5 to 93.0)	(0.7 to 1.3)	(0.8 to 1.6)	(0.1 to 1.1)
Eastern Europe	54.4	57.5	66.5	0.7	0.3	1.6
	(52.8 to 55.9)	(56.2 to 58.9)	(61.8 to 70.6)	(0.4 to 0.9)	(0.1 to 0.4)	(0.8 to 2.3)
Belarus	57.1	58.5	70.5	0.7	0.1	2.1
	(55.5 to 59.2)	(57.2 to 59.9)	(66.7 to 73.8)	(0.5 to 0.9)	(-0.0 to 0.2)	(1.3 to 2.7)
Estonia	60.1	74.9	82.0	1.1	1.1	1.0
	(58.5 to 61.7)	(72.2 to 76.6)	(77.6 to 86.3)	(0.8 to 1.3)	(0.9 to 1.2)	(0.4 to 1.6)
Latvia	55.4	62.0	69.8	0.8	0.6	1.3
	(53.9 to 56.9)	(60.4 to 63.6)	(66.8 to 72.6)	(0.6 to 1.0)	(0.4 to 0.7)	(0.7 to 1.9)
Lithuania	60.6	65.9	70.4	0.5	0.4	0.7
	(59.0 to 62.2)	(64.3 to 67.5)	(66.7 to 73.7)	(0.3 to 0.7)	(0.3 to 0.5)	(0.0 to 1.4)
Moldova	48.5	48.6	62.2	0.9	0.0	2.7
	(46.8 to 50.2)	(47.1 to 50.2)	(59.4 to 64.9)	(0.7 to 1.0)	(-0.2 to 0.2)	(2.3 to 3.2)
Russia	54.2	57.6	69.1	0.8	0.3	2.0
	(52.6 to 55.9)	(56.2 to 59.1)	(63.1 to 74.2)	(0.5 to 1.1)	(0.2 to 0.4)	(1.0 to 2.8)
Ukraine	54.0	56.4	56.8	0.2	0.2	0.1
	(52.5 to 56.0)	(55.1 to 57.7)	(48.4 to 64.2)	(-0.4 to 0.6)	(0.1 to 0.3)	(-1.7 to 1.4)
High income	70.1	84.1	86.1	0.7	0.9	0.3
	(69.0 to 71.1)	(83.1 to 84.9)	(84.4 to 87.3)	(0.7 to 0.7)	(0.9 to 0.9)	(0.1 to 0.4)
Australasia	71.5	87.3	88.5	0.7	1.0	0.1
	(70.2 to 72.8)	(85.9 to 88.5)	(86.5 to 89.7)	(0.7 to 0.8)	(0.9 to 1.1)	(0.0 to 0.3)
Australia	72.2	88.3	89.5	0.7	1.0	0.2
	(70.9 to 73.5)	(86.9 to 89.5)	(87.3 to 90.8)	(0.7 to 0.8)	(0.9 to 1.1)	(-0.0 to 0.3)
New Zealand	68.1	82.3	83.0	0.7	0.9	0.1
	(66.6 to 69.5)	(81.0 to 83.6)	(80.8 to 84.9)	(0.6 to 0.8)	(0.8 to 1.1)	(-0.2 to 0.3)
High-income Asia Pacific	75.2	91.1	94.1	0.8	1.0	0.4
	(73.8 to 76.4)	(90.0 to 92.0)	(92.8 to 95.1)	(0.7 to 0.8)	(0.9 to 1.0)	(0.3 to 0.4)

	UHC effective coverage index			Annualised rate of change (%)		
	1990	2010	2019	1990-2019	1990-2010	2010-2019
Brunei	52.3 (49.5 to 55.2)	63.1 (60.8 to 65.4)	65.6 (62.6 to 67.9)	0.8 (0.5 to 1.0)	0.9 (0.6 to 1.3)	0.4 (-0.1 to 0.9)
Japan	80.9 (79.5 to 82.1)	93.6 (92.5 to 94.7)	96.4 (95.0 to 97.4)	0.6 (0.5 to 0.7)	0.7 (0.7 to 0.8)	0.3 (0.2 to 0.4)
South Korea	59.7 (57.8 to 61.4)	84.8 (83.1 to 86.0)	89.2 (87.3 to 90.5)	1.4 (1.3 to 1.5)	1.7 (1.6 to 1.9)	0.6 (0.4 to 0.7)
Singapore	66.5 (64.7 to 68.2)	89.5 (88.1 to 90.7)	92.6 (90.1 to 93.9)	1.1 (1.0 to 1.2)	1.5 (1.4 to 1.6)	0.4 (0.1 to 0.6)
High-income North America	74.0 (72.9 to 75.1)	81.9 (80.8 to 83.0)	83.0 (81.2 to 84.4)	0.4 (0.3 to 0.4)	0.5 (0.5 to 0.6)	0.2 (-0.0 to 0.3)
Canada	79.8 (78.4 to 81.2)	88.1 (86.9 to 89.2)	90.4 (88.4 to 91.7)	0.4 (0.4 to 0.5)	0.5 (0.4 to 0.6)	0.3 (0.1 to 0.4)
Greenland	54.1 (51.9 to 56.4)	63.5 (61.2 to 66.2)	68.8 (64.6 to 72.9)	0.8 (0.6 to 1.1)	0.8 (0.6 to 1.0)	0.9 (0.2 to 1.5)
USA	73.4 (72.3 to 74.5)	81.2 (80.0 to 82.4)	82.2 (80.4 to 83.6)	0.4 (0.3 to 0.4)	0.5 (0.5 to 0.6)	0.1 (-0.1 to 0.2)
Southern Latin America	49.5 (48.0 to 51.1)	61.7 (60.1 to 63.5)	65.4 (59.9 to 69.3)	1.0 (0.7 to 1.1)	1.1 (1.0 to 1.2)	0.6 (-0.2 to 1.2)
Argentina	46.6 (44.8 to 48.3)	58.9 (57.2 to 60.8)	61.4 (55.6 to 65.7)	0.9 (0.6 to 1.2)	1.2 (1.0 to 1.3)	0.4 (-0.5 to 1.1)
Chile	55.9 (54.1 to 57.9)	68.2 (66.2 to 69.9)	74.6 (69.7 to 77.8)	1.0 (0.8 to 1.1)	1.0 (0.8 to 1.1)	1.0 (0.4 to 1.4)
Uruguay	53.4 (51.6 to 55.2)	64.2 (62.5 to 65.9)	68.8 (62.8 to 73.1)	0.9 (0.6 to 1.1)	0.9 (0.7 to 1.1)	0.8 (-0.2 to 1.4)
Western Europe	67.5 (66.3 to 68.6)	85.8 (84.8 to 86.6)	88.3 (86.0 to 89.9)	0.9 (0.9 to 1.0)	1.2 (1.1 to 1.3)	0.3 (0.1 to 0.5)
Andorra	80.9 (75.6 to 84.3)	90.8 (87.2 to 93.3)	91.9 (87.6 to 94.5)	0.4 (0.2 to 0.7)	0.6 (0.3 to 0.9)	0.1 (-0.3 to 0.5)
Austria	71.2 (69.6 to 72.6)	82.3 (81.1 to 83.5)	86.5 (83.5 to 88.6)	0.7 (0.6 to 0.8)	0.7 (0.6 to 0.8)	0.5 (0.2 to 0.8)
Belgium	67.6 (66.0 to 69.0)	83.4 (82.1 to 84.8)	87.5 (83.9 to 90.0)	0.9 (0.8 to 1.0)	1.1 (1.0 to 1.1)	0.5 (0.1 to 0.8)
Cyprus	56.9 (54.8 to 58.9)	74.8 (73.0 to 76.5)	79.6 (77.6 to 81.7)	1.2 (1.0 to 1.3)	1.4 (1.2 to 1.5)	0.7 (0.4 to 1.0)
Denmark	65.3 (63.4 to 67.1)	80.8 (79.3 to 82.3)	84.3 (80.6 to 86.7)	0.9 (0.7 to 1.0)	1.1 (1.0 to 1.2)	0.5 (0.0 to 0.8)
Finland	71.4 (69.8 to 73.0)	88.5 (87.2 to 89.8)	91.4 (89.0 to 92.9)	0.8 (0.8 to 0.9)	1.1 (1.0 to 1.2)	0.4 (0.1 to 0.5)
France	66.2 (64.5 to 67.8)	88.0 (86.8 to 89.0)	91.0 (86.6 to 93.6)	1.1 (0.9 to 1.2)	1.4 (1.3 to 1.5)	0.4 (-0.2 to 0.7)
Germany	66.5 (65.1 to 67.9)	83.5 (82.1 to 84.7)	86.5 (82.1 to 89.1)	0.9 (0.7 to 1.0)	1.1 (1.0 to 1.2)	0.4 (-0.1 to 0.7)
Greece	66.1 (64.4 to 67.8)	79.9 (78.3 to 81.6)	80.3 (76.3 to 82.9)	0.7 (0.5 to 0.8)	1.0 (0.9 to 1.0)	0.0 (-0.4 to 0.4)
Iceland	78.2 (76.3 to 80.2)	93.8 (92.5 to 95.2)	95.3 (93.6 to 96.8)	0.7 (0.6 to 0.8)	0.9 (0.8 to 1.1)	0.2 (-0.0 to 0.4)
Ireland	63.2 (61.5 to 65.0)	86.3 (84.7 to 87.6)	90.6 (87.3 to 92.3)	1.2 (1.1 to 1.3)	1.6 (1.4 to 1.7)	0.5 (0.1 to 0.8)
Israel	59.5 (57.8 to 61.1)	78.6 (77.1 to 80.0)	81.6 (77.8 to 84.1)	1.1 (0.9 to 1.2)	1.4 (1.3 to 1.5)	0.4 (-0.1 to 0.7)
Italy	70.4 (69.0 to 71.6)	86.8 (85.6 to 88.2)	89.0 (86.2 to 90.7)	0.8 (0.7 to 0.9)	1.0 (1.0 to 1.1)	0.3 (-0.0 to 0.4)
Luxembourg	66.2 (64.3 to 68.1)	87.5 (85.6 to 89.3)	91.5 (90.3 to 92.5)	1.1 (1.0 to 1.2)	1.4 (1.2 to 1.6)	0.5 (0.3 to 0.7)
Malta	60.0 (57.7 to 62.2)	77.5 (75.9 to 79.0)	82.9 (80.8 to 84.6)	1.1 (1.0 to 1.3)	1.3 (1.1 to 1.5)	0.8 (0.5 to 1.0)
Monaco	78.2 (74.7 to 82.1)	88.7 (85.9 to 91.6)	91.2 (88.5 to 94.8)	0.5 (0.3 to 0.7)	0.6 (0.4 to 0.9)	0.3 (-0.0 to 0.7)
Netherlands	69.8 (68.2 to 71.3)	87.6 (86.1 to 89.1)	89.9 (86.0 to 91.7)	0.9 (0.7 to 0.9)	1.1 (1.0 to 1.2)	0.3 (-0.1 to 0.5)
Norway	72.0 (70.4 to 73.5)	90.2 (88.7 to 91.4)	94.4 (91.3 to 96.1)	0.9 (0.8 to 1.0)	1.1 (1.0 to 1.2)	0.5 (0.2 to 0.7)
Portugal	60.8 (59.1 to 62.4)	79.2 (77.5 to 80.7)	83.8 (80.3 to 85.8)	1.1 (1.0 to 1.2)	1.3 (1.2 to 1.4)	0.6 (0.2 to 0.9)
San Marino	83.1 (80.1 to 85.7)	91.9 (85.8 to 96.1)	93.4 (84.8 to 97.3)	0.4 (0.1 to 0.6)	0.5 (0.1 to 0.8)	0.2 (-0.5 to 0.8)
Spain	65.0 (63.6 to 66.4)	88.4 (87.1 to 89.7)	90.3 (87.1 to 91.6)	1.1 (1.0 to 1.2)	1.5 (1.4 to 1.6)	0.2 (-0.1 to 0.4)
Sweden	78.8 (77.5 to 80.0)	88.3 (87.1 to 89.4)	90.4 (88.3 to 92.2)	0.5 (0.4 to 0.5)	0.6 (0.5 to 0.6)	0.3 (0.0 to 0.5)
Switzerland	77.2 (75.7 to 78.6)	90.7 (89.4 to 91.9)	93.7 (91.0 to 95.0)	0.7 (0.6 to 0.7)	0.8 (0.7 to 0.9)	0.4 (0.1 to 0.5)
UK	67.2 (65.9 to 68.4)	86.0 (84.9 to 87.1)	88.0 (85.2 to 89.9)	0.9 (0.8 to 1.0)	1.2 (1.2 to 1.3)	0.3 (-0.1 to 0.5)
Latin America and Caribbean	45.3 (43.5 to 47.2)	58.6 (57.4 to 59.9)	63.8 (61.5 to 65.9)	1.2 (1.0 to 1.3)	1.3 (1.1 to 1.4)	0.9 (0.6 to 1.3)
Andean Latin America	48.1 (45.0 to 51.4)	59.2 (57.1 to 61.1)	68.3 (64.4 to 71.5)	1.2 (0.9 to 1.5)	1.0 (0.7 to 1.4)	1.6 (0.9 to 2.2)
Bolivia	29.0 (23.8 to 34.3)	44.8 (40.9 to 49.4)	52.5 (47.2 to 58.0)	2.0 (1.4 to 2.8)	2.2 (1.3 to 3.1)	1.7 (0.6 to 2.7)
Ecuador	51.5 (47.5 to 54.6)	57.2 (54.8 to 59.5)	64.5 (60.4 to 68.4)	0.8 (0.4 to 1.1)	0.5 (0.2 to 0.9)	1.3 (0.5 to 2.1)

	UHC effective coverage index			Annualised rate of change (%)		
	1990	2010	2019	1990-2019	1990-2010	2010-2019
Peru	52.3 (48.1 to 56.4)	65.2 (62.2 to 68.1)	76.0 (70.4 to 79.9)	1.3 (0.9 to 1.7)	1.1 (0.7 to 1.5)	1.7 (0.8 to 2.5)
Caribbean	41.8 (40.2 to 43.4)	51.7 (50.3 to 53.2)	55.1 (52.3 to 57.8)	1.0 (0.7 to 1.2)	1.1 (0.8 to 1.3)	0.7 (0.0 to 1.3)
Antigua and Barbuda	47.1 (45.4 to 48.9)	59.9 (58.1 to 61.6)	59.7 (56.5 to 62.7)	0.8 (0.6 to 1.0)	1.2 (1.0 to 1.4)	-0.0 (-0.7 to 0.5)
The Bahamas	45.5 (43.3 to 47.9)	59.8 (57.7 to 61.8)	60.6 (56.9 to 64.3)	1.0 (0.7 to 1.3)	1.4 (1.1 to 1.6)	0.1 (-0.6 to 0.8)
Barbados	46.6 (44.8 to 48.4)	60.8 (59.2 to 62.5)	61.3 (57.5 to 65.0)	0.9 (0.7 to 1.2)	1.3 (1.2 to 1.5)	0.1 (-0.6 to 0.7)
Belize	39.5 (36.5 to 42.2)	52.1 (49.9 to 54.4)	54.3 (51.2 to 57.2)	1.1 (0.8 to 1.4)	1.4 (1.1 to 1.7)	0.4 (-0.3 to 1.1)
Bermuda	55.9 (54.3 to 57.4)	73.8 (71.8 to 75.4)	77.7 (73.3 to 80.8)	1.1 (0.9 to 1.3)	1.4 (1.2 to 1.6)	0.6 (0.0 to 1.0)
Cuba	59.4 (57.8 to 60.8)	70.9 (69.4 to 72.4)	72.5 (69.0 to 76.4)	0.7 (0.5 to 0.9)	0.9 (0.8 to 1.0)	0.3 (-0.4 to 0.9)
Dominica	43.9 (41.7 to 46.4)	50.9 (48.0 to 53.4)	51.9 (47.2 to 56.0)	0.6 (0.2 to 0.9)	0.7 (0.3 to 1.1)	0.2 (-0.7 to 1.0)
Dominican Republic	37.6 (34.2 to 40.9)	48.4 (44.8 to 52.1)	52.7 (46.6 to 58.0)	1.2 (0.7 to 1.6)	1.3 (0.6 to 1.9)	0.9 (-0.7 to 2.3)
Grenada	33.9 (31.6 to 36.0)	48.4 (46.5 to 50.2)	50.5 (48.3 to 52.8)	1.4 (1.1 to 1.6)	1.8 (1.5 to 2.1)	0.5 (0.0 to 1.0)
Guyana	23.2 (20.1 to 26.5)	33.1 (30.3 to 36.0)	40.7 (34.9 to 46.3)	1.9 (1.3 to 2.6)	1.8 (1.0 to 2.6)	2.3 (0.6 to 3.7)
Haiti	11.8 (9.0 to 15.3)	25.0 (21.0 to 29.0)	35.8 (30.5 to 41.2)	3.8 (2.8 to 4.9)	3.8 (2.4 to 5.2)	4.0 (2.5 to 5.5)
Jamaica	44.7 (42.8 to 46.5)	57.7 (55.9 to 59.3)	56.9 (51.9 to 61.5)	0.8 (0.5 to 1.1)	1.3 (1.1 to 1.5)	-0.1 (-1.1 to 0.7)
Puerto Rico	53.4 (51.4 to 55.2)	71.7 (70.0 to 73.2)	75.8 (70.4 to 79.9)	1.2 (0.9 to 1.4)	1.5 (1.3 to 1.6)	0.6 (-0.2 to 1.3)
Saint Kitts and Nevis	35.7 (33.7 to 37.4)	55.4 (53.5 to 57.3)	53.0 (49.4 to 56.0)	1.4 (1.1 to 1.6)	2.2 (1.9 to 2.5)	-0.5 (-1.3 to 0.1)
Saint Lucia	39.9 (37.7 to 42.2)	58.0 (56.3 to 59.8)	59.2 (55.4 to 62.6)	1.4 (1.1 to 1.6)	1.9 (1.6 to 2.1)	0.2 (-0.5 to 0.9)
Saint Vincent and the Grenadines	37.9 (35.8 to 39.8)	49.7 (47.6 to 51.9)	49.6 (46.4 to 52.6)	0.9 (0.7 to 1.2)	1.4 (1.1 to 1.6)	-0.1 (-0.8 to 0.7)
Suriname	36.4 (33.8 to 39.4)	48.9 (47.0 to 50.6)	50.2 (46.0 to 54.0)	1.1 (0.7 to 1.5)	1.5 (1.1 to 1.8)	0.3 (-0.7 to 1.1)
Trinidad and Tobago	37.5 (35.4 to 39.7)	51.9 (50.1 to 53.6)	55.6 (49.3 to 61.4)	1.4 (0.9 to 1.7)	1.6 (1.4 to 1.8)	0.8 (-0.6 to 1.9)
Virgin Islands	47.6 (44.4 to 50.9)	52.6 (50.6 to 54.7)	53.7 (50.6 to 56.9)	0.4 (0.1 to 0.7)	0.5 (0.1 to 0.9)	0.2 (-0.3 to 0.8)
Central Latin America	48.7 (46.9 to 50.5)	59.2 (57.7 to 60.7)	63.3 (59.8 to 66.9)	0.9 (0.7 to 1.1)	1.0 (0.9 to 1.1)	0.7 (0.1 to 1.4)
Colombia	55.7 (53.8 to 57.4)	66.4 (64.8 to 67.9)	74.5 (69.2 to 79.0)	1.0 (0.7 to 1.2)	0.9 (0.7 to 1.0)	1.3 (0.5 to 2.0)
Costa Rica	65.8 (63.8 to 67.6)	74.0 (72.0 to 75.7)	79.1 (74.2 to 83.1)	0.6 (0.4 to 0.8)	0.6 (0.4 to 0.7)	0.8 (-0.0 to 1.5)
El Salvador	41.6 (39.1 to 44.2)	56.7 (54.6 to 58.4)	61.7 (56.3 to 66.6)	1.4 (1.0 to 1.7)	1.5 (1.3 to 1.8)	0.9 (-0.1 to 1.9)
Guatemala	39.5 (36.7 to 42.8)	47.2 (43.3 to 51.0)	52.2 (46.1 to 57.8)	1.0 (0.4 to 1.4)	0.9 (0.4 to 1.4)	1.1 (-0.6 to 2.6)
Honduras	46.9 (43.5 to 50.2)	52.7 (48.8 to 57.2)	54.5 (49.2 to 58.4)	0.5 (0.1 to 0.8)	0.6 (0.1 to 1.1)	0.3 (-0.8 to 1.3)
Mexico	46.2 (44.3 to 48.1)	57.8 (55.9 to 59.6)	61.4 (56.4 to 66.8)	1.0 (0.7 to 1.3)	1.1 (1.0 to 1.3)	0.7 (-0.2 to 1.5)
Nicaragua	47.4 (44.7 to 49.8)	54.1 (52.3 to 56.1)	57.1 (54.0 to 60.8)	0.6 (0.4 to 0.9)	0.7 (0.4 to 0.9)	0.6 (-0.2 to 1.4)
Panama	53.9 (52.2 to 55.9)	63.9 (62.1 to 65.7)	71.3 (65.4 to 76.3)	1.0 (0.6 to 1.2)	0.8 (0.7 to 1.0)	1.2 (0.3 to 2.1)
Venezuela	51.2 (47.3 to 54.0)	60.3 (58.4 to 62.3)	61.1 (55.1 to 66.3)	0.6 (0.2 to 1.0)	0.8 (0.6 to 1.2)	0.1 (-1.0 to 1.1)
Tropical Latin America	42.0 (39.8 to 44.2)	59.1 (57.6 to 60.8)	64.8 (63.0 to 66.7)	1.5 (1.3 to 1.7)	1.7 (1.5 to 2.0)	1.0 (0.8 to 1.3)
Brazil	41.6 (39.5 to 43.9)	59.1 (57.6 to 60.8)	64.8 (63.0 to 66.7)	1.5 (1.4 to 1.7)	1.7 (1.5 to 2.0)	1.0 (0.8 to 1.3)
Paraguay	53.3 (50.6 to 55.9)	59.5 (57.3 to 61.8)	63.4 (57.9 to 68.2)	0.6 (0.2 to 0.9)	0.6 (0.3 to 0.8)	0.7 (-0.3 to 1.6)
North Africa and Middle East	44.4 (43.0 to 45.8)	55.6 (54.5 to 56.7)	60.5 (58.3 to 62.6)	1.1 (0.9 to 1.2)	1.1 (1.0 to 1.3)	0.9 (0.6 to 1.3)
North Africa and Middle East	44.4 (43.0 to 45.8)	55.6 (54.5 to 56.7)	60.5 (58.3 to 62.6)	1.1 (0.9 to 1.2)	1.1 (1.0 to 1.3)	0.9 (0.6 to 1.3)
Afghanistan	21.9 (17.1 to 27.2)	31.0 (25.5 to 36.4)	39.2 (33.6 to 45.1)	2.0 (1.3 to 2.9)	1.7 (0.6 to 3.0)	2.6 (1.2 to 4.0)
Algeria	48.7 (45.3 to 51.9)	62.5 (59.5 to 65.5)	64.8 (61.4 to 68.3)	1.0 (0.7 to 1.3)	1.3 (0.9 to 1.7)	0.4 (-0.3 to 1.2)
Bahrain	54.8 (52.2 to 57.4)	66.3 (64.1 to 68.6)	70.6 (66.4 to 74.5)	0.9 (0.6 to 1.1)	1.0 (0.7 to 1.2)	0.7 (0.0 to 1.4)
Egypt	38.2 (35.1 to 40.9)	49.9 (47.4 to 52.8)	54.7 (49.0 to 60.6)	1.2 (0.8 to 1.7)	1.3 (1.1 to 1.7)	1.0 (-0.3 to 2.2)
Iran	52.6 (50.1 to 54.8)	62.1 (60.3 to 63.8)	69.6 (67.4 to 71.4)	1.0 (0.8 to 1.1)	0.8 (0.7 to 1.0)	1.3 (1.0 to 1.5)

	UHC effective coverage index			Annualised rate of change (%)		
	1990	2010	2019	1990-2019	1990-2010	2010-2019
Iraq	45.4 (42.5 to 48.2)	50.5 (46.6 to 55.0)	57.7 (53.5 to 62.4)	0.8 (0.5 to 1.2)	0.6 (0.1 to 1.0)	1.5 (0.7 to 2.2)
Jordan	53.0 (49.8 to 56.4)	68.0 (65.4 to 70.8)	70.0 (66.9 to 72.8)	1.0 (0.7 to 1.2)	1.2 (0.9 to 1.6)	0.3 (-0.3 to 0.9)
Kuwait	65.4 (61.7 to 67.9)	75.1 (73.4 to 76.7)	81.9 (78.6 to 84.9)	0.8 (0.6 to 1.0)	0.7 (0.5 to 1.0)	1.0 (0.4 to 1.4)
Lebanon	54.3 (51.4 to 56.7)	69.0 (67.0 to 71.3)	74.5 (72.5 to 76.6)	1.1 (0.9 to 1.3)	1.2 (1.0 to 1.5)	0.8 (0.5 to 1.2)
Libya	57.7 (54.2 to 61.6)	66.6 (64.8 to 68.4)	66.4 (62.3 to 70.6)	0.5 (0.1 to 0.8)	0.7 (0.4 to 1.0)	-0.0 (-0.8 to 0.7)
Morocco	41.0 (38.0 to 44.3)	53.2 (49.5 to 57.6)	57.8 (54.6 to 62.5)	1.2 (0.8 to 1.6)	1.3 (0.8 to 1.9)	0.9 (0.1 to 1.7)
Oman	53.5 (49.7 to 57.6)	61.6 (59.9 to 63.2)	71.2 (69.0 to 73.3)	1.0 (0.7 to 1.3)	0.7 (0.3 to 1.1)	1.6 (1.3 to 2.0)
Palestine	47.2 (43.9 to 50.6)	56.6 (54.7 to 58.4)	61.3 (58.3 to 64.1)	0.9 (0.6 to 1.2)	0.9 (0.5 to 1.4)	0.9 (0.3 to 1.5)
Qatar	60.0 (55.4 to 63.7)	76.4 (72.2 to 79.3)	80.7 (75.9 to 83.3)	1.0 (0.7 to 1.3)	1.2 (0.8 to 1.6)	0.6 (-0.0 to 1.3)
Saudi Arabia	50.1 (45.3 to 55.6)	58.4 (55.9 to 61.2)	64.2 (59.6 to 68.9)	0.8 (0.4 to 1.3)	0.8 (0.2 to 1.3)	1.0 (0.1 to 1.9)
Sudan	27.3 (22.4 to 33.2)	44.3 (39.5 to 49.6)	51.9 (47.1 to 56.6)	2.2 (1.5 to 2.9)	2.4 (1.4 to 3.5)	1.7 (0.8 to 2.7)
Syria	45.3 (42.0 to 49.3)	56.4 (52.9 to 59.8)	57.6 (52.6 to 62.5)	0.8 (0.3 to 1.3)	1.1 (0.5 to 1.6)	0.2 (-0.9 to 1.3)
Tunisia	55.9 (53.0 to 58.9)	63.5 (58.6 to 68.9)	68.2 (61.7 to 73.8)	0.7 (0.3 to 1.0)	0.6 (0.1 to 1.2)	0.8 (-0.2 to 1.6)
Turkey	47.8 (44.9 to 50.7)	64.1 (61.6 to 66.8)	69.2 (64.6 to 73.9)	1.3 (1.0 to 1.6)	1.5 (1.2 to 1.8)	0.8 (0.0 to 1.7)
United Arab Emirates	55.1 (50.5 to 59.7)	63.4 (59.4 to 67.1)	63.2 (56.8 to 69.9)	0.5 (0.0 to 0.9)	0.7 (0.2 to 1.2)	-0.0 (-1.1 to 1.2)
Yemen	30.1 (24.1 to 37.7)	47.7 (42.4 to 52.6)	49.1 (43.8 to 53.9)	1.7 (0.9 to 2.5)	2.3 (1.3 to 3.4)	0.3 (-0.7 to 1.3)
South Asia	28.4	42.1	46.5	1.7	2.0	1.1
	(25.2 to 31.8)	(39.6 to 44.6)	(42.8 to 50.1)	(1.3 to 2.1)	(1.5 to 2.5)	(0.2 to 2.0)
South Asia	28.4	42.1	46.5	1.7	2.0	1.1
	(25.2 to 31.8)	(39.6 to 44.6)	(42.8 to 50.1)	(1.3 to 2.1)	(1.5 to 2.5)	(0.2 to 2.0)
Bangladesh	31.7 (28.2 to 35.5)	50.3 (47.3 to 52.8)	53.7 (49.6 to 58.3)	1.8 (1.3 to 2.3)	2.3 (1.7 to 2.9)	0.8 (-0.1 to 1.6)
Bhutan	42.0 (35.0 to 52.0)	51.8 (47.7 to 56.5)	51.4 (45.3 to 57.3)	0.7 (-0.2 to 1.4)	1.1 (-0.1 to 2.0)	-0.1 (-1.3 to 0.9)
India	27.0 (23.1 to 30.7)	42.1 (39.3 to 45.0)	46.8 (42.4 to 51.5)	1.9 (1.4 to 2.5)	2.2 (1.7 to 2.9)	1.2 (0.1 to 2.3)
Nepal	29.3 (25.9 to 33.0)	44.8 (41.4 to 49.4)	47.2 (43.1 to 51.7)	1.7 (1.1 to 2.2)	2.1 (1.4 to 2.9)	0.6 (-0.4 to 1.5)
Pakistan	36.3 (31.8 to 41.1)	35.1 (30.5 to 40.0)	39.3 (33.1 to 45.1)	0.3 (-0.4 to 0.8)	-0.2 (-1.0 to 0.6)	1.2 (-0.8 to 3.3)
Southeast Asia, east Asia, and Oceania	48.5	59.4	65.0	1.0	1.0	1.0
	(46.0 to 51.1)	(56.9 to 61.6)	(61.0 to 68.5)	(0.8 to 1.3)	(0.7 to 1.3)	(0.2 to 1.7)
East Asia	49.9	63.1	69.7	1.1	1.2	1.1
	(46.9 to 53.2)	(60.0 to 65.9)	(64.1 to 74.6)	(0.8 to 1.5)	(0.8 to 1.5)	(0.1 to 2.0)
China	49.7 (46.6 to 53.2)	63.1 (59.9 to 66.0)	69.9 (64.1 to 74.9)	1.2 (0.8 to 1.5)	1.2 (0.8 to 1.6)	1.1 (0.1 to 2.1)
North Korea	46.5 (42.9 to 50.5)	49.7 (47.3 to 53.0)	52.9 (49.5 to 56.1)	0.4 (0.1 to 0.8)	0.3 (-0.1 to 0.8)	0.7 (-0.0 to 1.3)
Taiwan (province of China)	62.7 (60.8 to 64.6)	77.4 (75.7 to 78.9)	79.3 (74.7 to 82.7)	0.8 (0.6 to 1.0)	1.0 (0.9 to 1.2)	0.3 (-0.4 to 0.8)
Oceania	37.4	35.3	39.0	0.2	-0.3	1.2
	(34.5 to 40.3)	(31.3 to 39.3)	(32.9 to 45.5)	(-0.4 to 0.7)	(-0.8 to 0.2)	(-0.0 to 2.3)
American Samoa	53.9 (51.3 to 56.0)	54.1 (51.5 to 56.0)	53.3 (49.7 to 56.3)	-0.0 (-0.3 to 0.2)	0.0 (-0.2 to 0.3)	-0.2 (-0.8 to 0.5)
Cook Islands	52.9 (50.2 to 55.3)	64.5 (62.3 to 66.7)	62.3 (58.2 to 66.5)	0.6 (0.3 to 0.9)	1.0 (0.7 to 1.3)	-0.4 (-1.1 to 0.3)
Fiji	44.3 (41.2 to 47.6)	42.4 (40.7 to 44.3)	45.2 (40.4 to 49.9)	0.1 (-0.4 to 0.5)	-0.2 (-0.6 to 0.2)	0.7 (-0.5 to 1.8)
Guam	63.0 (60.9 to 64.9)	67.1 (65.2 to 68.9)	63.8 (60.6 to 66.8)	0.0 (-0.2 to 0.2)	0.3 (0.1 to 0.5)	-0.6 (-1.2 to -0.0)
Kiribati	25.8 (23.4 to 28.8)	32.0 (29.6 to 35.2)	35.7 (32.1 to 39.8)	1.1 (0.5 to 1.7)	1.1 (0.4 to 1.7)	1.2 (0.1 to 2.3)
Marshall Islands	38.7 (36.4 to 41.4)	42.1 (38.9 to 45.9)	43.9 (39.1 to 49.5)	0.4 (-0.1 to 0.9)	0.4 (-0.1 to 0.9)	0.5 (-0.8 to 1.7)
Federated States of Micronesia	33.9 (30.2 to 38.3)	37.7 (34.9 to 41.8)	34.3 (31.1 to 39.8)	0.0 (-0.5 to 0.7)	0.6 (-0.2 to 1.3)	-1.1 (-2.1 to 0.0)
Nauru	39.5 (37.0 to 42.6)	38.4 (35.7 to 40.9)	41.9 (39.0 to 46.1)	0.2 (-0.1 to 0.5)	-0.2 (-0.6 to 0.2)	1.0 (0.2 to 2.0)
Niue	47.8 (44.5 to 50.6)	48.4 (45.3 to 51.6)	48.9 (44.8 to 53.3)	0.1 (-0.3 to 0.5)	0.1 (-0.3 to 0.4)	0.1 (-0.6 to 0.9)
Northern Mariana Islands	62.6 (60.2 to 64.5)	63.6 (61.6 to 65.9)	60.4 (58.1 to 63.0)	-0.1 (-0.3 to 0.1)	0.1 (-0.1 to 0.3)	-0.6 (-1.1 to -0.1)
Palau	46.1 (41.4 to 49.8)	49.4 (46.2 to 52.9)	44.8 (41.1 to 49.6)	-0.1 (-0.5 to 0.4)	0.3 (-0.2 to 1.0)	-1.0 (-2.0 to -0.0)
Papua New Guinea	35.5 (31.6 to 39.7)	33.0 (27.8 to 38.1)	37.6 (30.2 to 45.3)	0.2 (-0.5 to 0.9)	-0.4 (-1.1 to 0.3)	1.5 (-0.0 to 3.0)

	UHC effective coverage index			Annualised rate of change (%)		
	1990	2010	2019	1990-2019	1990-2010	2010-2019
Samoa	39.5 (35.1 to 43.4)	43.5 (39.3 to 47.2)	49.8 (44.4 to 55.0)	0.8 (0.3 to 1.3)	0.5 (-0.2 to 1.2)	1.5 (0.4 to 2.6)
Solomon Islands	25.3 (22.4 to 28.8)	33.1 (30.8 to 35.6)	39.3 (37.0 to 41.8)	1.5 (1.0 to 2.0)	1.3 (0.6 to 2.0)	1.9 (1.1 to 2.7)
Tokelau	43.2 (38.4 to 47.4)	52.6 (47.9 to 56.5)	52.7 (47.4 to 57.7)	0.7 (0.2 to 1.2)	1.0 (0.4 to 1.6)	0.0 (-0.8 to 0.9)
Tonga	53.9 (50.9 to 57.5)	51.7 (47.9 to 55.4)	52.6 (47.6 to 56.8)	-0.1 (-0.5 to 0.3)	-0.2 (-0.7 to 0.2)	0.1 (-0.7 to 1.0)
Tuvalu	29.2 (25.9 to 33.1)	38.8 (35.2 to 42.9)	39.6 (34.1 to 45.0)	1.1 (0.2 to 1.7)	1.4 (0.5 to 2.2)	0.2 (-1.1 to 1.4)
Vanuatu	33.2 (28.3 to 39.0)	33.6 (29.4 to 37.9)	34.1 (29.2 to 39.7)	0.1 (-0.7 to 0.8)	0.1 (-0.9 to 1.0)	0.1 (-1.4 to 1.7)
Southeast Asia	44.8 (42.8 to 46.7)	51.2 (49.4 to 53.1)	55.1 (52.0 to 58.0)	0.7 (0.5 to 0.9)	0.7 (0.4 to 0.9)	0.8 (0.1 to 1.5)
Cambodia	30.1 (26.5 to 33.6)	50.0 (46.9 to 53.2)	56.9 (53.7 to 61.1)	2.2 (1.7 to 2.7)	2.5 (1.9 to 3.3)	1.5 (0.7 to 2.3)
Indonesia	38.6 (35.4 to 41.9)	47.3 (43.9 to 51.0)	48.6 (42.2 to 54.9)	0.8 (0.3 to 1.3)	1.0 (0.5 to 1.5)	0.3 (-1.4 to 1.8)
Laos	15.4 (11.4 to 19.4)	34.3 (29.2 to 40.3)	43.8 (38.3 to 49.2)	3.6 (2.7 to 4.7)	4.0 (2.6 to 5.6)	2.7 (1.1 to 4.4)
Malaysia	51.3 (49.4 to 53.0)	62.2 (60.3 to 63.8)	66.6 (62.3 to 70.7)	0.9 (0.6 to 1.2)	1.0 (0.8 to 1.1)	0.8 (-0.0 to 1.5)
Maldives	36.8 (33.7 to 40.2)	63.3 (61.4 to 65.1)	66.9 (64.0 to 69.9)	2.1 (1.7 to 2.4)	2.7 (2.3 to 3.1)	0.6 (-0.0 to 1.2)
Mauritius	43.8 (41.5 to 46.0)	49.0 (47.0 to 51.0)	55.9 (51.3 to 60.0)	0.8 (0.5 to 1.2)	0.6 (0.4 to 0.8)	1.4 (0.5 to 2.3)
Myanmar	28.0 (23.6 to 33.3)	39.1 (35.5 to 42.5)	46.9 (42.9 to 50.9)	1.8 (1.1 to 2.5)	1.6 (0.7 to 2.7)	2.1 (0.9 to 3.2)
Philippines	59.8 (56.2 to 62.9)	49.2 (45.9 to 52.3)	54.8 (48.5 to 60.5)	-0.3 (-0.7 to 0.1)	-1.0 (-1.3 to -0.6)	1.2 (-0.2 to 2.4)
Seychelles	53.9 (52.0 to 55.8)	60.2 (58.5 to 61.8)	61.5 (59.5 to 63.5)	0.5 (0.3 to 0.6)	0.5 (0.4 to 0.7)	0.2 (-0.2 to 0.7)
Sri Lanka	53.1 (50.4 to 56.0)	57.1 (55.0 to 59.0)	65.6 (59.7 to 71.2)	0.7 (0.3 to 1.1)	0.4 (0.1 to 0.6)	1.5 (0.4 to 2.5)
Thailand	57.6 (55.2 to 59.9)	65.5 (62.8 to 68.0)	71.6 (66.2 to 76.6)	0.8 (0.4 to 1.0)	0.6 (0.4 to 0.9)	1.0 (0.0 to 1.9)
Timor-Leste	30.4 (26.3 to 36.2)	45.2 (40.6 to 53.1)	45.8 (41.1 to 51.6)	1.4 (0.6 to 2.1)	2.0 (1.0 to 3.0)	0.2 (-1.4 to 1.4)
Viet Nam	47.3 (43.2 to 51.6)	56.7 (54.8 to 58.5)	59.7 (56.7 to 63.0)	0.8 (0.4 to 1.2)	0.9 (0.5 to 1.4)	0.6 (0.0 to 1.2)
Sub-Saharan Africa	27.1 (24.7 to 29.4)	35.4 (33.4 to 37.8)	45.0 (42.3 to 47.8)	1.8 (1.4 to 2.1)	1.3 (1.0 to 1.7)	2.6 (1.9 to 3.3)
Central sub-Saharan Africa	22.1 (18.5 to 26.1)	30.1 (26.3 to 34.8)	43.0 (37.9 to 48.1)	2.3 (1.6 to 3.0)	1.6 (0.6 to 2.5)	3.9 (2.5 to 5.3)
Angola	18.5 (14.2 to 23.9)	31.5 (27.4 to 35.4)	39.1 (34.1 to 44.1)	2.6 (1.5 to 3.6)	2.7 (1.2 to 4.2)	2.4 (0.8 to 3.9)
Central African Republic	17.6 (14.4 to 21.7)	16.7 (12.5 to 22.3)	22.2 (16.3 to 29.3)	0.8 (-0.6 to 2.1)	-0.3 (-2.1 to 1.5)	3.0 (-0.0 to 6.3)
Congo (Brazzaville)	25.2 (21.4 to 29.7)	36.4 (32.2 to 41.0)	43.9 (38.6 to 49.3)	1.9 (1.2 to 2.6)	1.8 (0.9 to 2.8)	2.1 (0.7 to 3.4)
DR Congo	22.8 (18.3 to 27.8)	29.7 (24.9 to 35.7)	45.1 (39.5 to 51.1)	2.3 (1.6 to 3.2)	1.3 (0.1 to 2.5)	4.6 (2.9 to 6.3)
Equatorial Guinea	16.7 (12.1 to 21.9)	42.6 (35.7 to 49.4)	50.1 (42.3 to 56.3)	3.8 (2.6 to 5.0)	4.7 (3.1 to 6.4)	1.8 (0.4 to 3.3)
Gabon	35.8 (31.6 to 40.0)	41.8 (38.4 to 45.9)	52.9 (48.4 to 58.1)	1.3 (0.9 to 1.9)	0.8 (0.1 to 1.6)	2.7 (1.5 to 3.7)
Eastern sub-Saharan Africa	25.6 (23.4 to 27.9)	37.9 (35.9 to 40.3)	48.1 (45.5 to 51.2)	2.2 (1.9 to 2.5)	2.0 (1.6 to 2.3)	2.7 (2.1 to 3.1)
Burundi	27.0 (21.8 to 32.8)	38.0 (32.9 to 43.4)	50.0 (43.5 to 55.8)	2.1 (1.3 to 3.0)	1.7 (0.6 to 2.9)	3.0 (1.8 to 4.2)
Comoros	34.2 (27.3 to 54.0)	41.8 (36.8 to 46.6)	48.2 (42.7 to 53.8)	1.2 (-0.4 to 2.0)	1.0 (-1.3 to 2.1)	1.6 (0.3 to 2.8)
Djibouti	39.1 (32.8 to 44.6)	40.6 (34.5 to 47.1)	45.4 (38.7 to 52.0)	0.5 (-0.2 to 1.2)	0.2 (-0.7 to 1.2)	1.2 (-0.3 to 2.7)
Eritrea	17.7 (12.2 to 23.5)	35.0 (30.3 to 40.2)	42.3 (35.9 to 48.2)	3.0 (1.9 to 4.3)	3.4 (1.9 to 5.3)	2.1 (0.7 to 3.3)
Ethiopia	10.0 (7.3 to 13.4)	35.8 (32.3 to 39.5)	46.5 (42.3 to 51.0)	5.3 (4.3 to 6.5)	6.3 (5.0 to 8.0)	2.9 (2.0 to 3.9)
Kenya	42.8 (38.9 to 47.7)	42.0 (38.5 to 45.8)	51.7 (46.7 to 56.2)	0.6 (0.3 to 0.9)	-0.1 (-0.5 to 0.3)	2.3 (1.5 to 3.1)
Madagascar	30.6 (26.7 to 34.4)	36.4 (32.3 to 40.5)	39.7 (34.2 to 45.4)	0.9 (0.3 to 1.5)	0.9 (-0.0 to 1.7)	1.0 (-0.4 to 2.3)
Malawi	31.8 (28.1 to 35.4)	41.8 (38.6 to 45.3)	55.5 (51.9 to 59.1)	1.9 (1.5 to 2.4)	1.4 (0.8 to 2.0)	3.1 (2.2 to 4.0)
Mozambique	23.9 (19.2 to 29.8)	31.5 (27.9 to 35.5)	44.0 (39.4 to 48.7)	2.1 (1.3 to 3.0)	1.4 (0.3 to 2.5)	3.7 (2.3 to 5.1)
Rwanda	23.4 (19.6 to 27.8)	45.4 (42.0 to 49.1)	59.3 (54.5 to 64.4)	3.2 (2.5 to 3.8)	3.3 (2.5 to 4.1)	3.0 (2.2 to 3.8)
Somalia	15.2 (9.9 to 20.9)	18.8 (13.0 to 25.5)	24.1 (17.1 to 31.1)	1.6 (0.0 to 3.0)	1.1 (-0.9 to 3.0)	2.7 (-0.5 to 5.8)
South Sudan	31.8 (24.8 to 37.9)	34.5 (28.3 to 40.9)	41.6 (34.5 to 49.6)	0.9 (0.1 to 1.8)	0.4 (-0.6 to 1.5)	2.1 (0.3 to 3.9)

	UHC effective coverage index			Annualised rate of change (%)		
	1990	2010	2019	1990-2019	1990-2010	2010-2019
Uganda	29.1 (25.6 to 32.9)	39.9 (36.2 to 44.4)	52.7 (49.0 to 56.9)	2.0 (1.6 to 2.5)	1.6 (0.9 to 2.3)	3.1 (2.0 to 4.2)
Tanzania	35.5 (31.4 to 40.1)	45.1 (41.4 to 49.3)	55.2 (51.1 to 59.3)	1.5 (1.1 to 2.0)	1.2 (0.6 to 1.9)	2.2 (1.3 to 3.2)
Zambia	29.8 (26.0 to 33.6)	38.2 (35.1 to 41.1)	52.7 (49.0 to 56.6)	2.0 (1.4 to 2.6)	1.2 (0.5 to 2.0)	3.6 (2.5 to 4.5)
Southern sub-Saharan Africa	47.3 (44.3 to 49.9)	39.6 (37.6 to 41.7)	58.1 (55.5 to 60.6)	0.7 (0.5 to 1.0)	-0.9 (-1.2 to -0.5)	4.3 (3.7 to 4.8)
Botswana	44.6 (40.2 to 48.8)	46.4 (42.1 to 51.5)	57.5 (52.5 to 62.4)	0.9 (0.5 to 1.3)	0.2 (-0.3 to 0.8)	2.4 (1.3 to 3.3)
eSwatini	44.8 (40.7 to 49.0)	35.0 (30.8 to 39.5)	53.3 (48.4 to 58.6)	0.6 (0.1 to 1.1)	-1.2 (-2.1 to -0.4)	4.7 (3.4 to 6.1)
Lesotho	39.4 (35.4 to 43.4)	31.8 (28.3 to 35.6)	38.6 (33.9 to 44.3)	-0.1 (-0.6 to 0.5)	-1.1 (-1.8 to -0.3)	2.1 (1.0 to 3.3)
Namibia	43.8 (39.9 to 48.8)	49.2 (45.6 to 53.0)	62.1 (57.4 to 66.8)	1.2 (0.7 to 1.6)	0.6 (-0.0 to 1.1)	2.6 (1.8 to 3.4)
South Africa	48.8 (45.2 to 51.9)	40.7 (38.1 to 43.6)	59.7 (56.7 to 62.8)	0.7 (0.5 to 1.0)	-0.9 (-1.3 to -0.5)	4.3 (3.6 to 4.9)
Zimbabwe	44.5 (40.7 to 47.5)	34.2 (31.7 to 37.4)	54.5 (50.3 to 58.5)	0.7 (0.3 to 1.1)	-1.3 (-1.7 to -0.8)	5.1 (4.1 to 6.1)
Western sub-Saharan Africa	24.4 (20.9 to 27.9)	33.6 (30.4 to 37.4)	40.2 (36.3 to 44.5)	1.7 (1.2 to 2.4)	1.6 (0.9 to 2.3)	2.0 (0.6 to 3.2)
Benin	27.5 (23.1 to 31.5)	35.6 (30.8 to 40.4)	44.7 (38.2 to 51.0)	1.7 (0.9 to 2.4)	1.3 (0.3 to 2.3)	2.5 (1.1 to 3.9)
Burkina Faso	22.8 (18.8 to 27.3)	37.6 (34.0 to 42.9)	41.7 (37.8 to 46.6)	2.1 (1.4 to 2.8)	2.5 (1.7 to 3.5)	1.1 (-0.2 to 2.4)
Cape Verde	49.8 (47.4 to 52.3)	61.2 (59.2 to 63.1)	62.3 (58.6 to 65.1)	0.8 (0.5 to 1.0)	1.0 (0.8 to 1.3)	0.2 (-0.5 to 0.8)
Cameroon	29.1 (24.8 to 34.2)	30.9 (26.7 to 35.6)	42.3 (36.6 to 48.5)	1.3 (0.6 to 2.0)	0.3 (-0.7 to 1.3)	3.5 (1.8 to 5.0)
Chad	21.0 (16.7 to 25.2)	26.0 (22.4 to 30.1)	31.4 (26.4 to 36.7)	1.4 (0.5 to 2.4)	1.1 (-0.1 to 2.4)	2.1 (-0.0 to 4.0)
Côte d'Ivoire	26.4 (21.9 to 31.6)	33.7 (28.8 to 38.8)	42.7 (37.8 to 49.3)	1.7 (1.0 to 2.4)	1.2 (0.3 to 2.2)	2.7 (1.2 to 4.1)
The Gambia	47.6 (41.1 to 54.2)	45.8 (42.3 to 49.9)	48.1 (43.5 to 53.5)	0.0 (-0.6 to 0.7)	-0.2 (-0.9 to 0.6)	0.5 (-0.6 to 1.6)
Ghana	29.5 (24.6 to 34.7)	41.5 (38.1 to 45.3)	49.2 (45.5 to 53.1)	1.8 (1.1 to 2.5)	1.7 (0.8 to 2.7)	1.8 (0.9 to 2.8)
Guinea	20.8 (16.3 to 25.2)	31.4 (26.5 to 36.1)	32.4 (26.1 to 38.3)	1.5 (0.5 to 2.5)	2.1 (0.9 to 3.3)	0.4 (-1.8 to 2.3)
Guinea-Bissau	18.7 (14.6 to 23.3)	23.8 (20.3 to 28.2)	35.8 (30.4 to 41.5)	2.2 (1.3 to 3.4)	1.2 (-0.1 to 2.7)	4.5 (2.4 to 6.2)
Liberia	19.2 (14.9 to 23.3)	36.8 (32.8 to 41.2)	47.6 (41.9 to 53.7)	3.1 (2.3 to 4.1)	3.3 (2.3 to 4.6)	2.9 (1.6 to 4.1)
Mali	20.8 (16.7 to 25.6)	35.5 (31.0 to 39.8)	40.8 (34.5 to 46.6)	2.3 (1.4 to 3.2)	2.6 (1.5 to 3.8)	1.6 (-0.1 to 3.0)
Mauritania	27.2 (22.1 to 32.4)	46.3 (42.2 to 50.1)	53.1 (47.5 to 59.6)	2.3 (1.6 to 3.2)	2.7 (1.8 to 3.7)	1.5 (0.3 to 2.8)
Niger	18.0 (13.5 to 22.6)	31.6 (26.2 to 37.4)	35.1 (28.4 to 41.5)	2.3 (1.2 to 3.4)	2.9 (1.5 to 4.2)	1.2 (-1.0 to 3.0)
Nigeria	22.6 (16.9 to 28.3)	31.5 (26.3 to 37.2)	38.4 (31.8 to 44.7)	1.8 (0.9 to 2.9)	1.7 (0.3 to 3.1)	2.2 (-0.4 to 4.5)
São Tomé and Príncipe	41.6 (38.0 to 48.0)	51.0 (48.3 to 54.4)	54.7 (50.7 to 59.1)	0.9 (0.4 to 1.3)	1.0 (0.3 to 1.6)	0.8 (0.0 to 1.5)
Senegal	31.9 (27.6 to 38.7)	45.0 (41.8 to 49.1)	49.4 (44.9 to 54.9)	1.5 (0.7 to 2.2)	1.7 (0.8 to 2.4)	1.0 (-0.1 to 2.2)
Sierra Leone	28.2 (23.3 to 34.2)	36.8 (31.5 to 42.3)	42.1 (35.8 to 48.7)	1.4 (0.6 to 2.2)	1.3 (0.2 to 2.3)	1.5 (-0.2 to 3.1)
Togo	32.6 (28.4 to 36.7)	33.6 (29.7 to 37.7)	42.8 (37.9 to 48.0)	0.9 (0.3 to 1.5)	0.2 (-0.6 to 1.0)	2.7 (1.3 to 4.0)