

DUODENAL ACIDIFICATION INDUCES GASTRIC RELAXATION AND ALTERS EPITHELIAL BARRIER FUNCTION BY A MAST CELL INDEPENDENT MECHANISM

Short title: Duodenal acidification and hyperpermeability

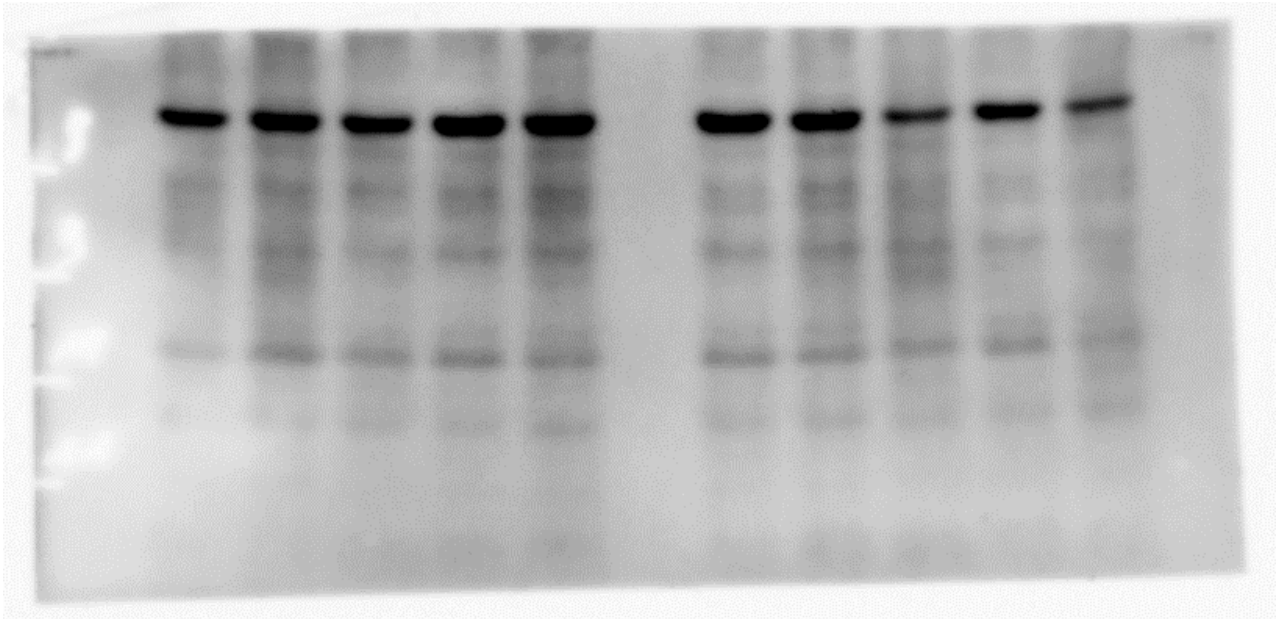
Hanne Vanheel¹, Maria Vicario^{2,4,#}, Dorien Beeckmans¹, Silvia Cocca³, Lucas Wauters^{1,5}, Alison Accarie¹, Joran Toth¹, Hans-Reimer Rodewald⁶, Gert De Hertogh⁷, Gianluca Matteoli¹, Guy Boeckxstaens¹, Jan Tack^{1,5}, Ricard Farré^{1,4*}, Tim Vanuytsel^{1,5}

¹Translational Research Center for Gastrointestinal Disorders, Department of Chronic Diseases, Metabolism and Ageing, KU Leuven, Leuven, Belgium; ²Digestive Diseases Research Unit, Department of Gastroenterology, Institut de Recerca Vall d'Hebron, Hospital Universitari Vall d'Hebron, Universitat Autònoma de Barcelona, Barcelona, Spain; ³Department of Digestive Diseases, Campus Bio-Medico University, Rome, Italy. Endoscopy Unit-Azienda Ospedaliero Universitaria di Modena, Italy; ⁴Centro de Investigación Biomédica en Red de Enfermedades Hepáticas y Digestivas (CIBERehd), Instituto de Salud Carlos II, Madrid, Spain. ⁵Department of Gastroenterology and Hepatology, University Hospitals Leuven, Leuven, Belgium; ⁶Division of Cellular Immunology, German Cancer Research Center, Heidelberg, Germany; ⁷Department of pathology, University Hospitals Leuven, Leuven, Belgium.

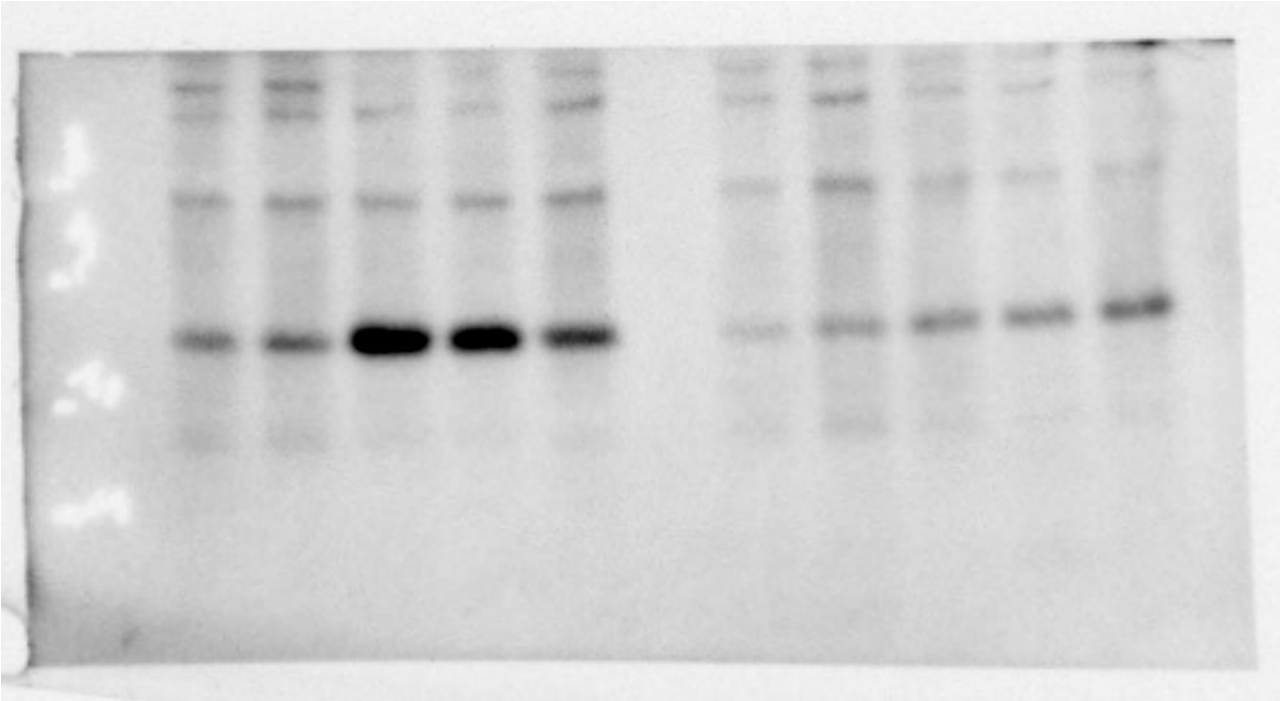
#Current address: Department of Gastrointestinal Health, Société des produits Nestlé S.A., Nestlé Research, Vers-chez-les-Blanc, 1000 Lausanne 26, Switzerland

* Shared senior authorship

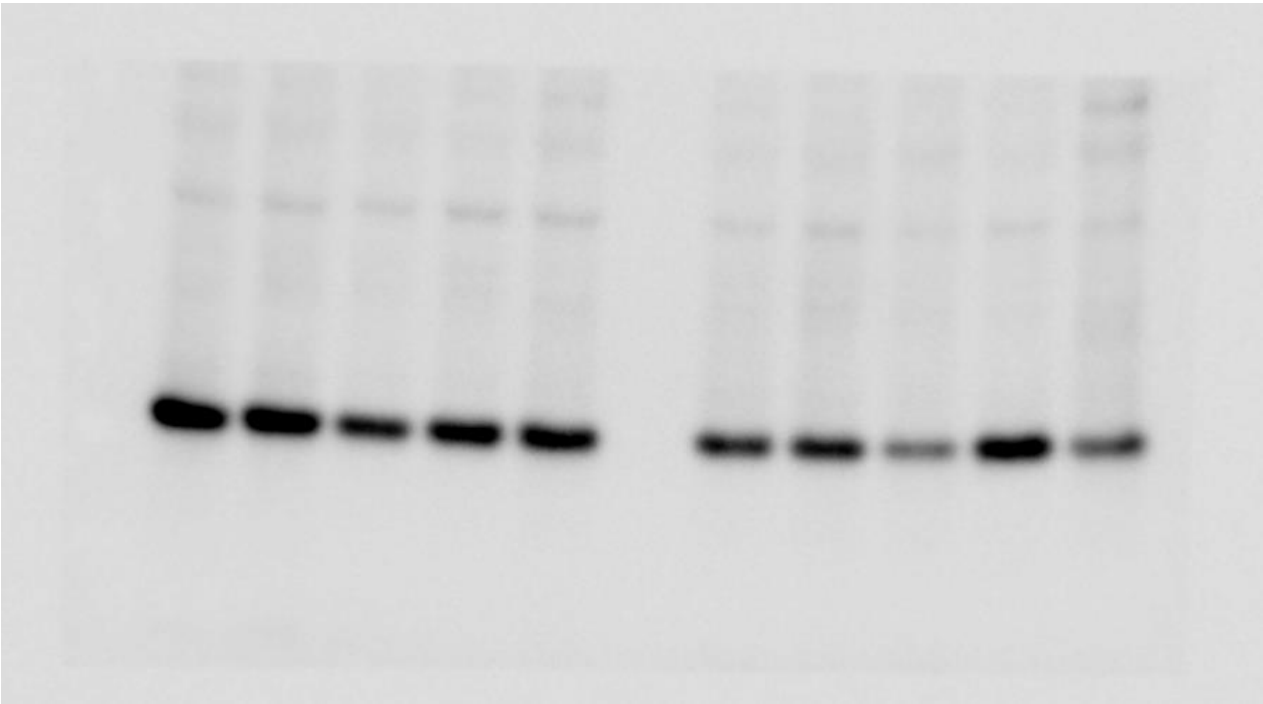
Entire gel of the western blot for CLDN1 (figure 3B)



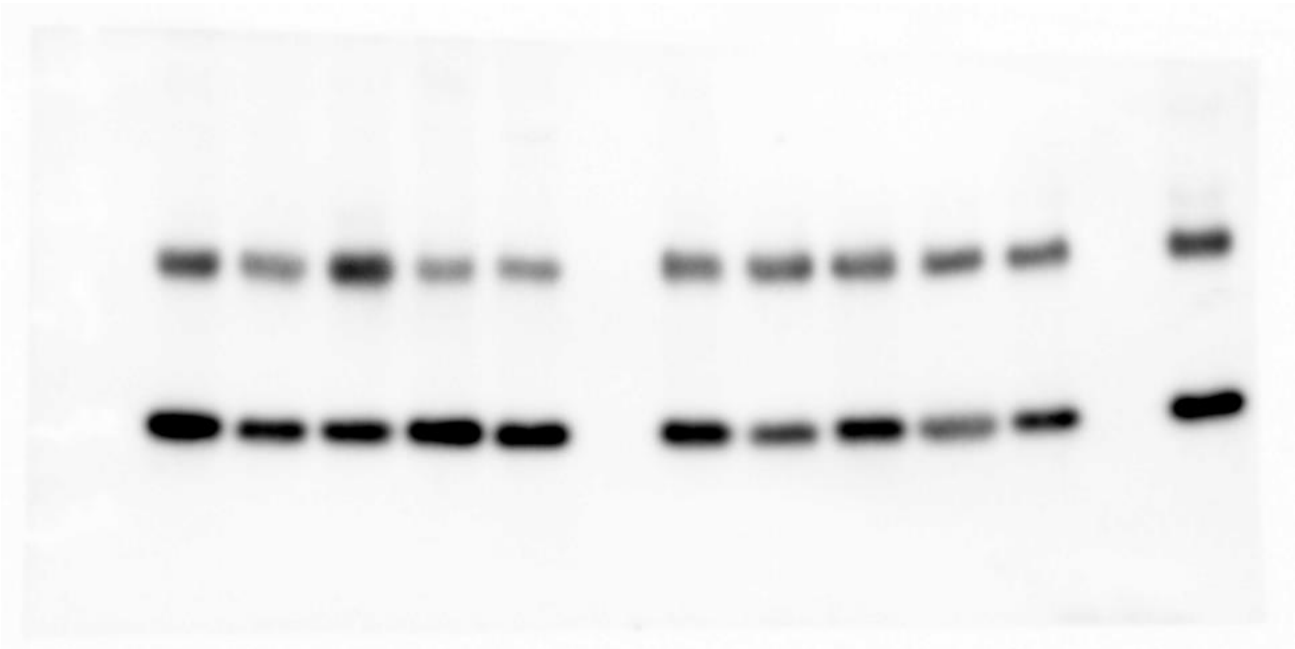
Entire gel of the western blot for CLDN2 (figure 3B)



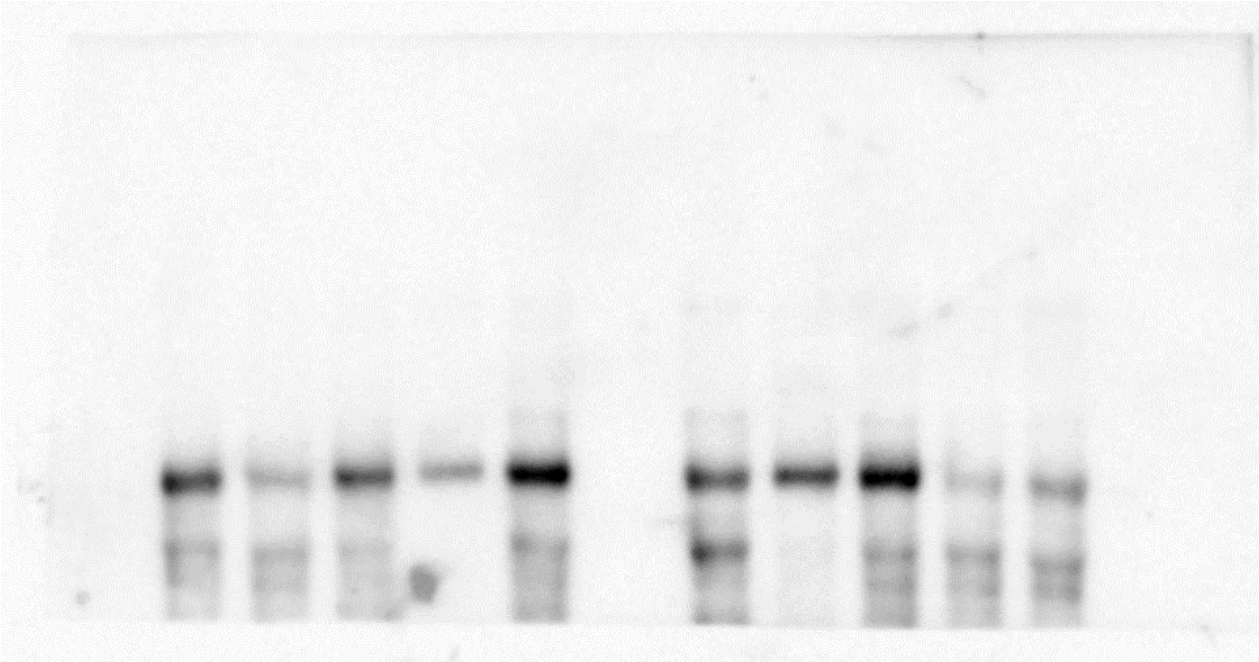
Entire gel of the western blot for CLDN3 (figure 3B)



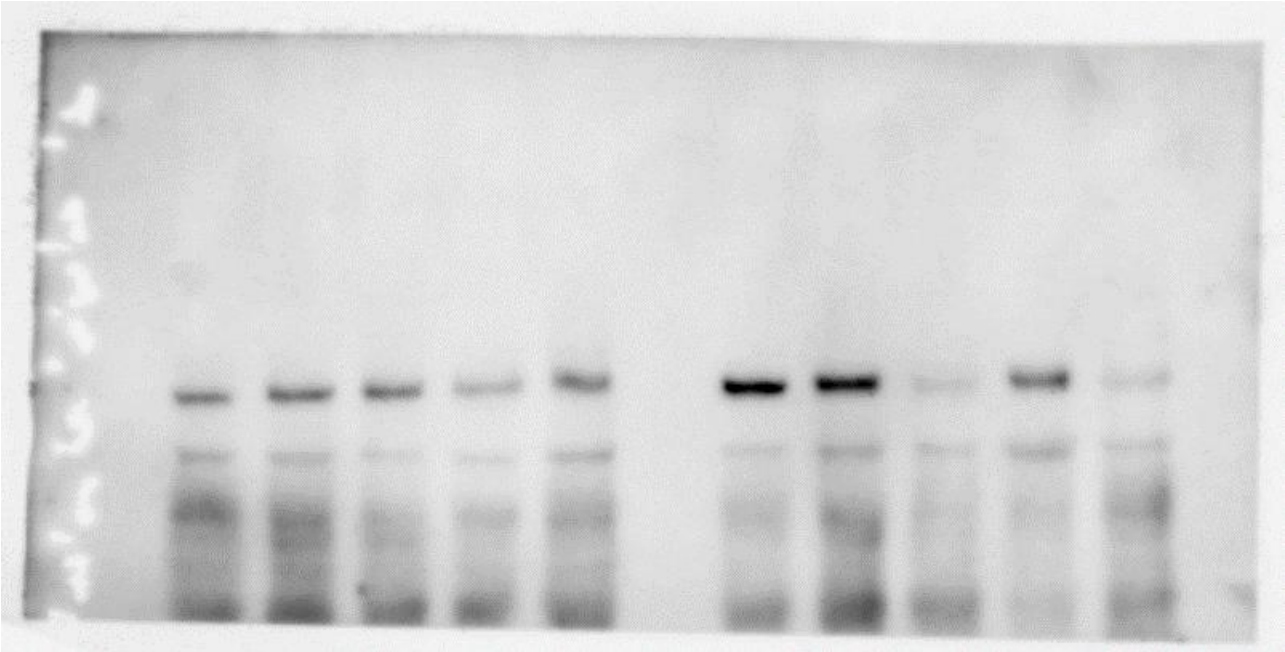
Entire gel of the western blot for CLDN4 (figure 3B)



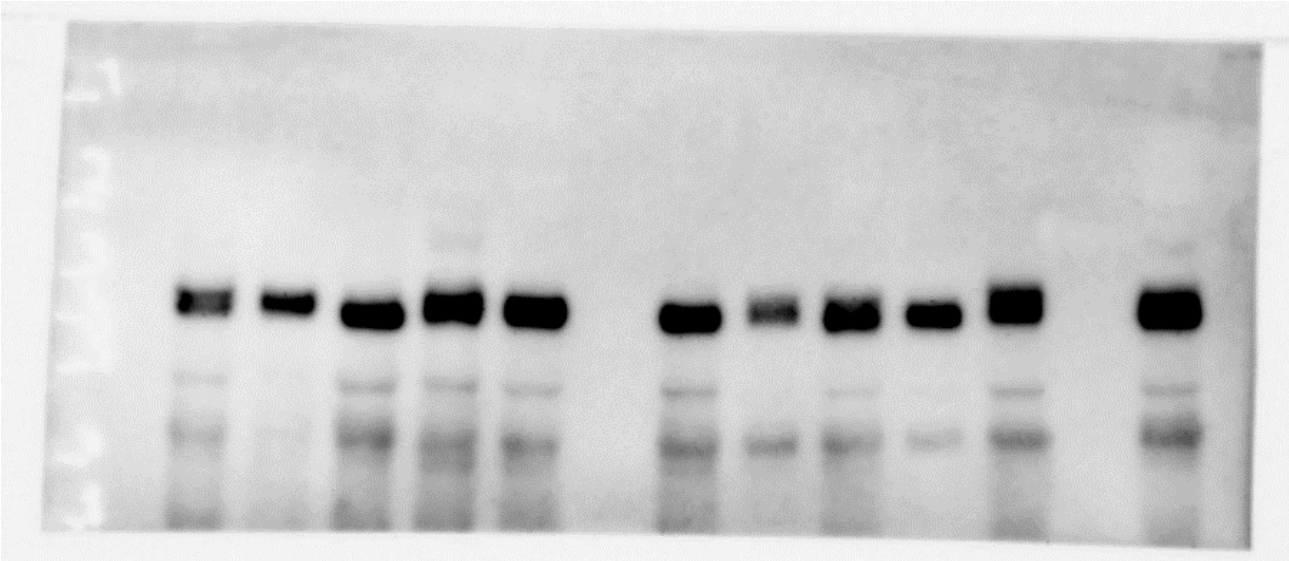
Entire gel of the western blot for OCLN (figure 3B)



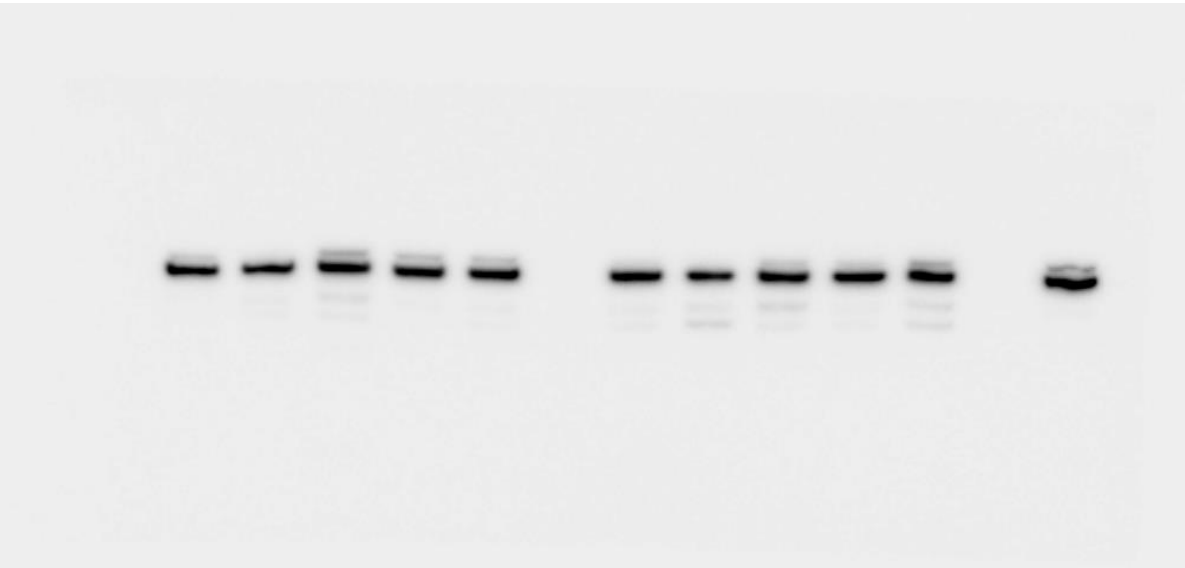
Entire gel of the western blot for DSC2 (figure 3B)



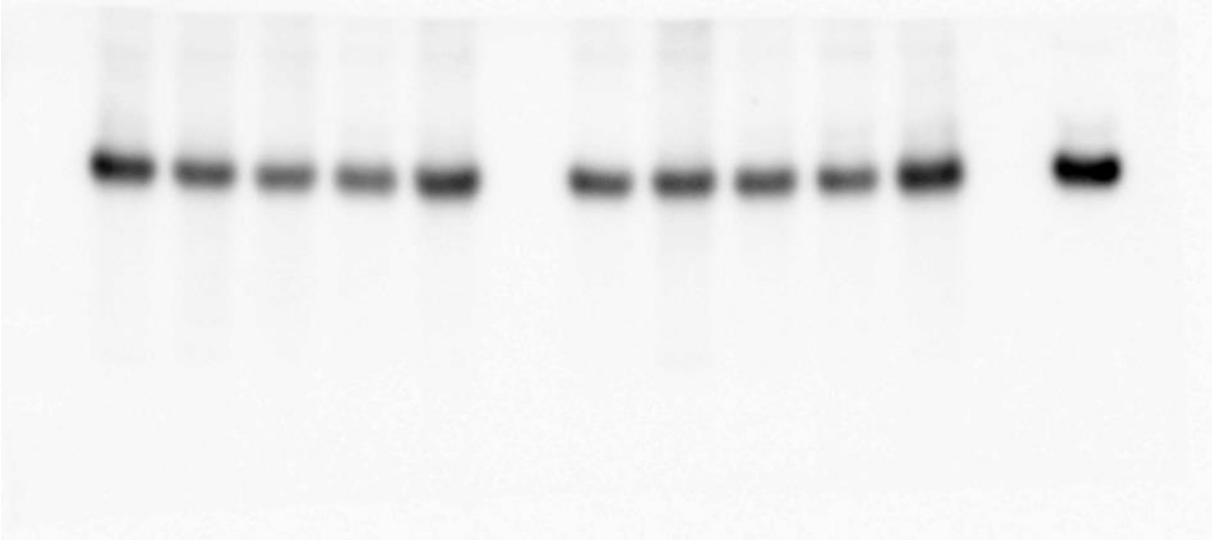
Entire gel of the western blot for DSG2 (figure 3B)



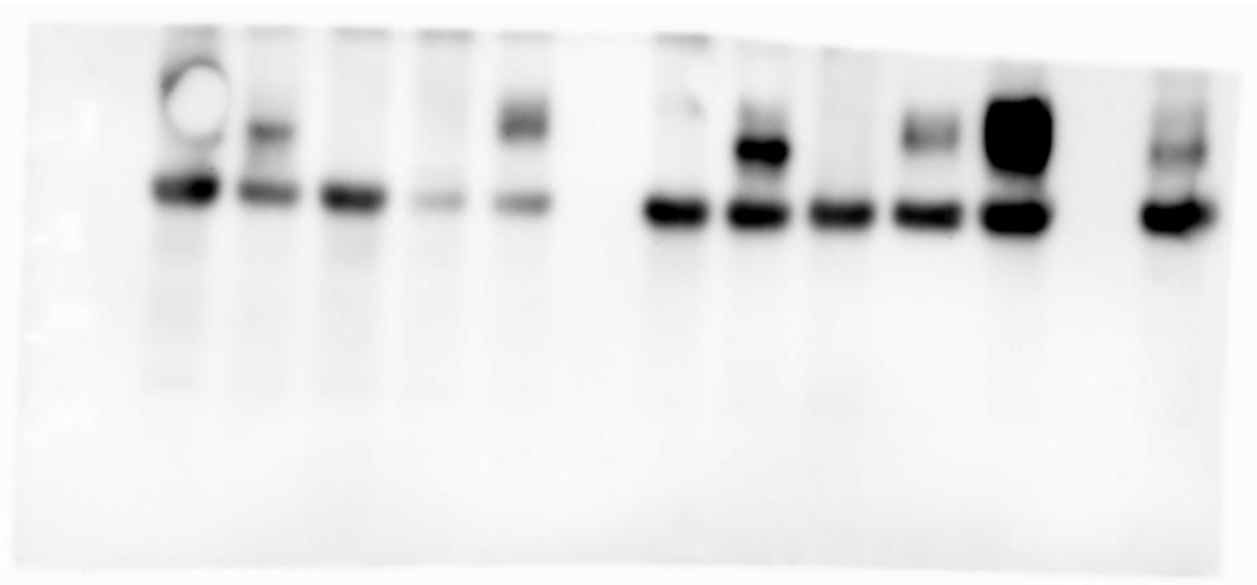
Entire gel of the western blot for vinculin (figure 3B)



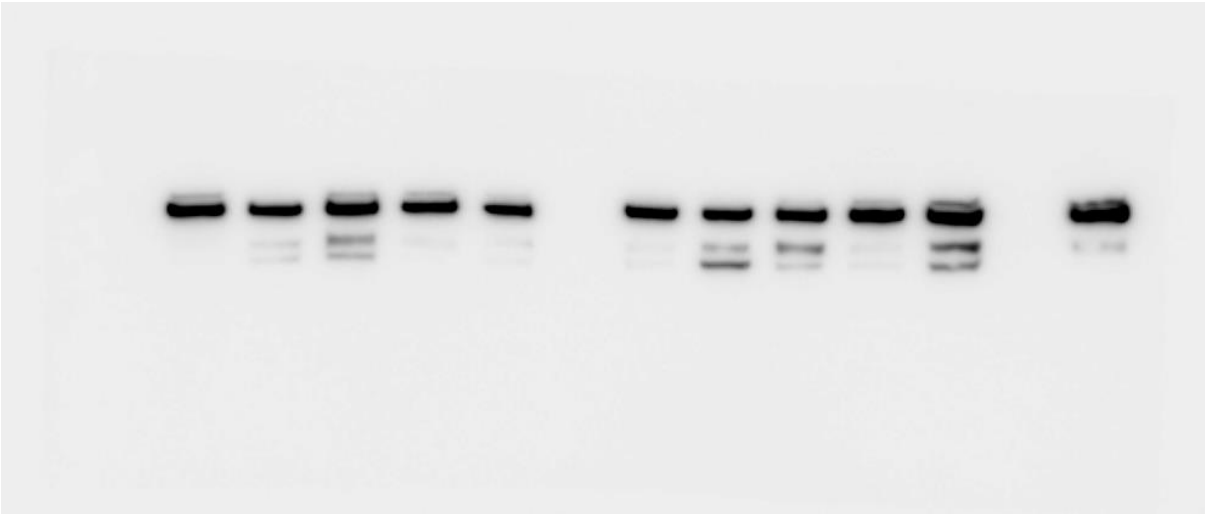
Entire gel of the western blot for MBP (figure 4F)



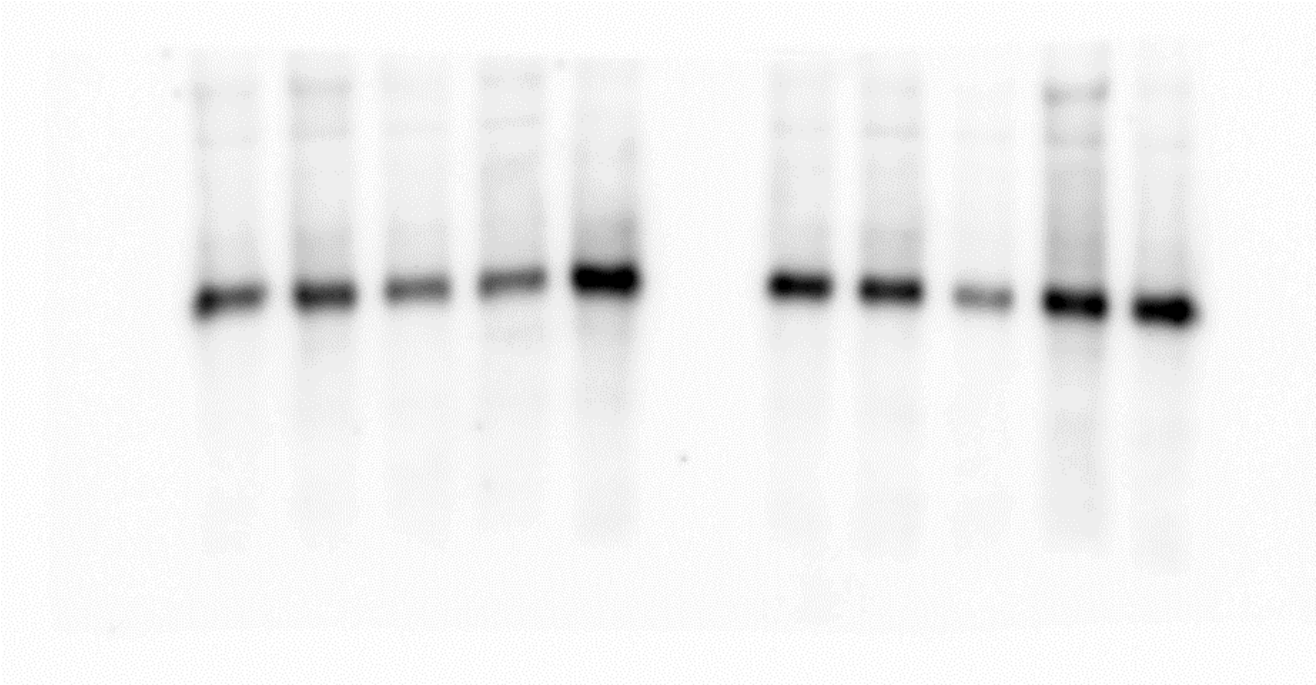
Entire gel of the western blot for trypsin (figure 4F)



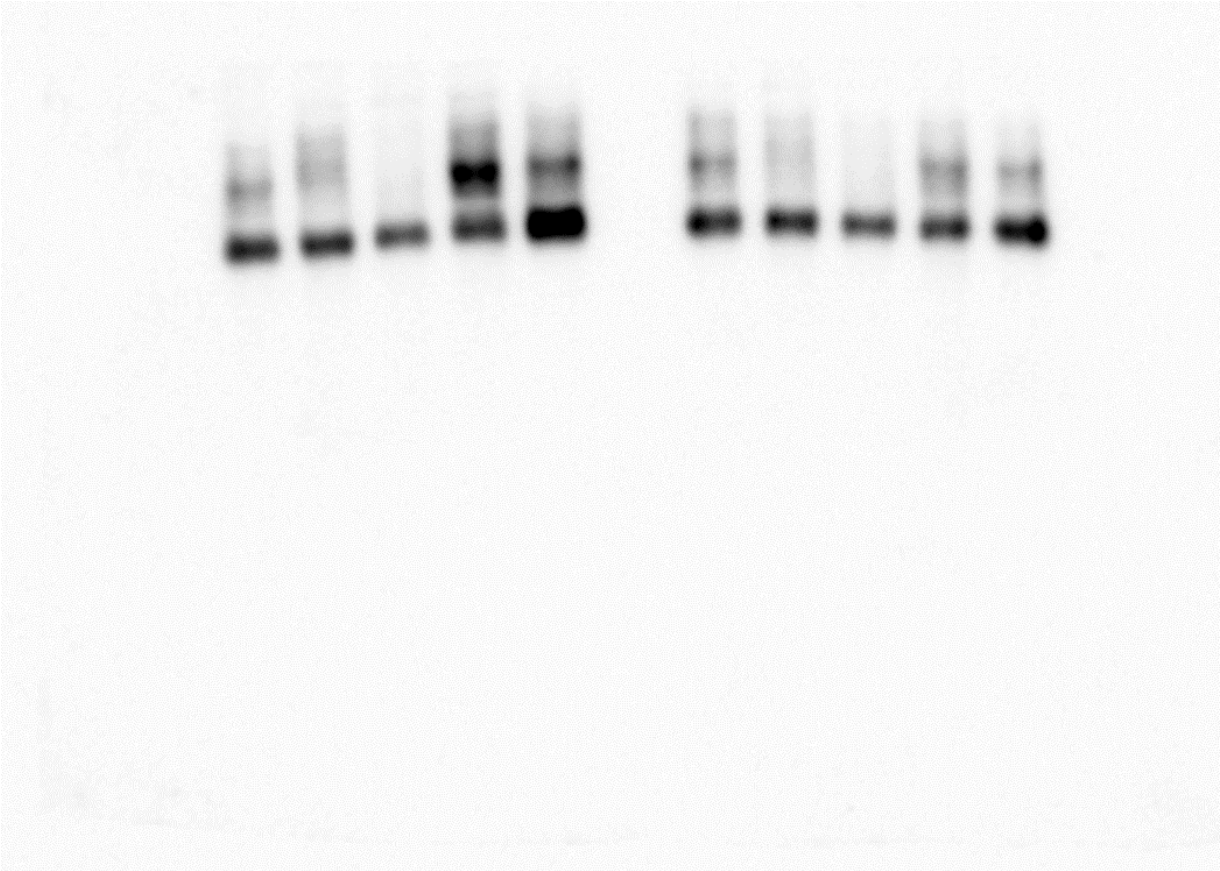
Entire gel of the western blot for vinculin (figure 4F)



Entire gel of the western blot for MBP (figure 7F)



Entire gel of the western blot for tryptase (figure 7F)



Entire gel of the western blot for vinculin (figure 7F)

