

## Supplementary Document

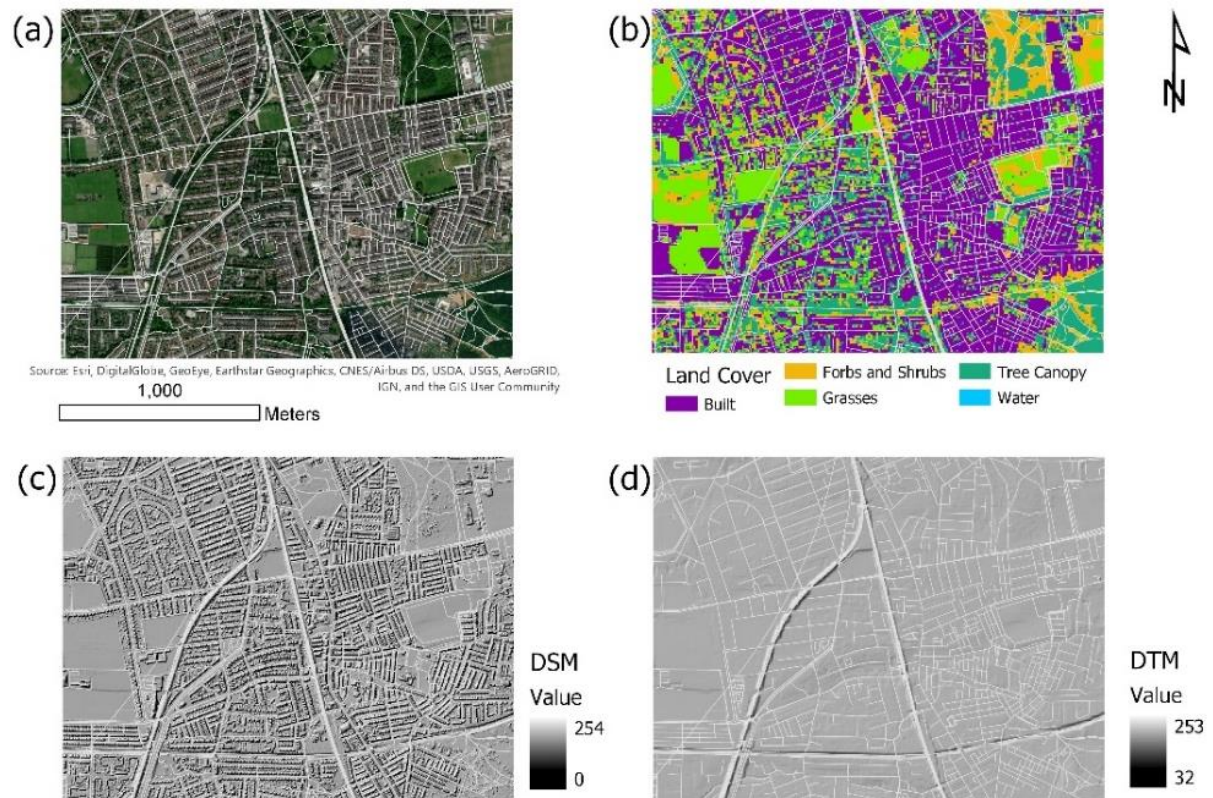
**Cite As:** Labib, S. M., Huck, J. J., & Lindley, S. (2021). Modelling and mapping eye-level greenness visibility exposure using multi-source data at high spatial resolutions. *Science of The Total Environment*, 143050. DOI: <https://doi.org/10.1016/j.scitotenv.2020.143050>

### Contents

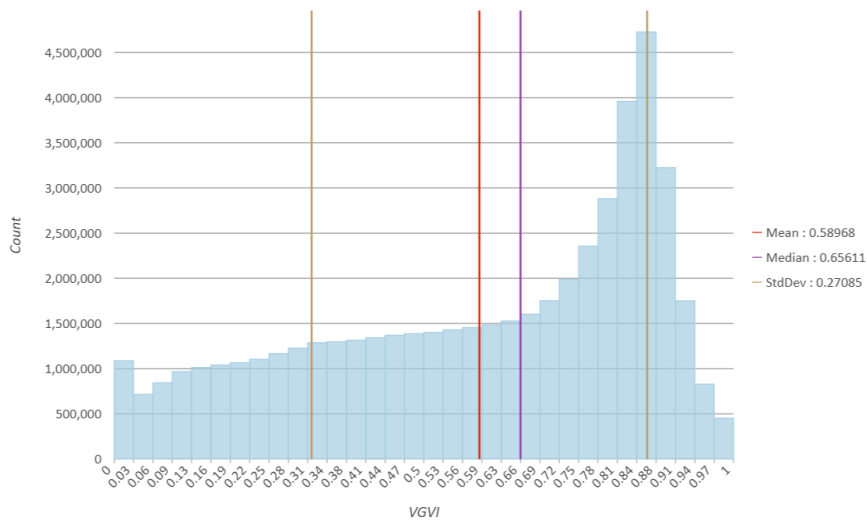
Supplementary Figures (p 1-3)

Supplementary Tables (p 4)

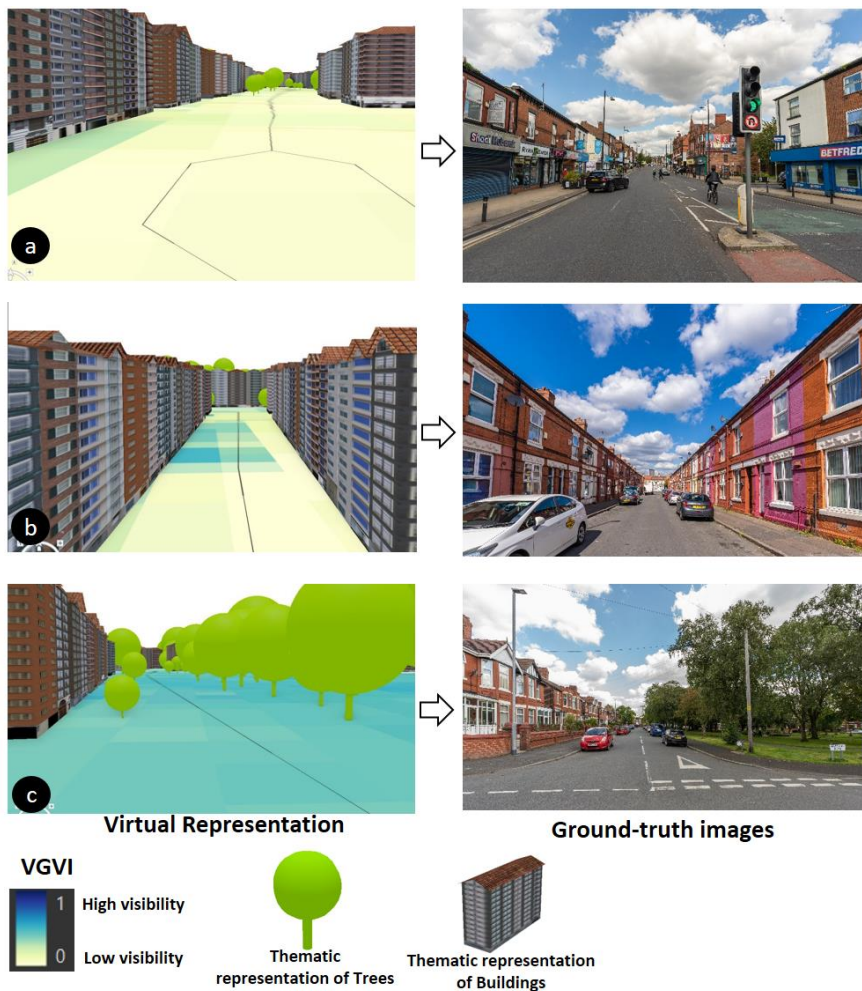
### Supplementary Figures



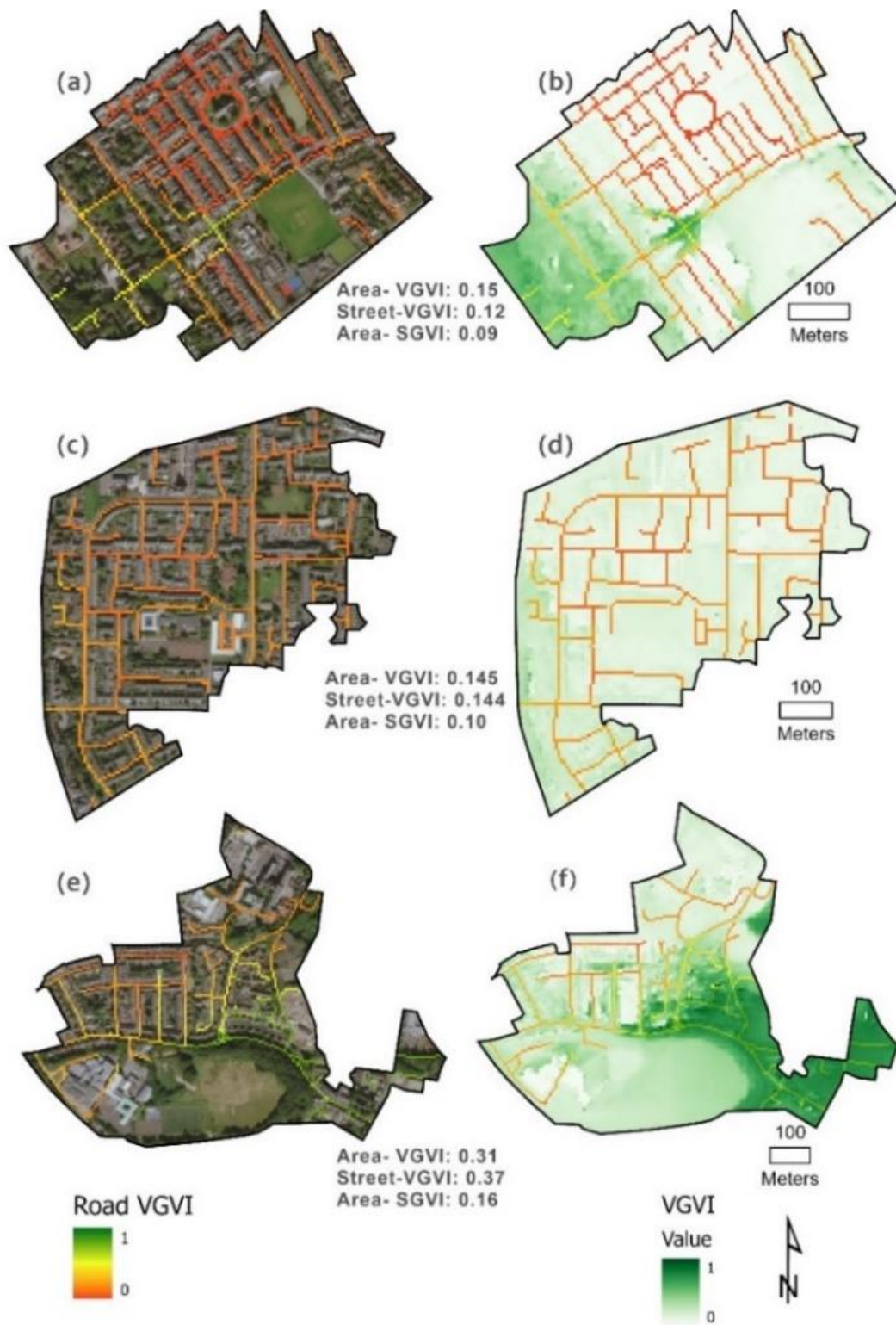
**Figure S1:** Examples of (a) High-resolution satellite image within the study area (Source: ESRI, 2020); (b) Land cover data (Source: Dennis et al., 2018); (c) Digital surface model; (d) Digital terrain model. Overlaid with OpenStreetMap road network dataset.



**Figure S2:** Viewshed greenness visibility index value distribution for Greater Manchester.



**Figure S3:** Ground truth validation of VGVI modelled values, comparing in virtual environment. High VGVI values correspond to greater greenness, and low VGVI values indicates low greenness in ground truth photos. Ground-truth photos taken by the lead author.



**Figure S4:** Examples of studied neighbourhoods with different morphological patterns and varying greenness visibility values.

## Supplementary Tables

**Table S1:** Pearson's correlation coefficients between mean neighbourhood scale greenness visibility for street-only locations, and entire neighbourhoods.

		Mean VGVI at Neighbourhood	Mean street-only VGVI at Neighbourhood	Mean SGVI at Neighbourhood
Mean VGVI at Neighbourhood	Pearson Correlation	1	<b>0.937**</b>	0.434
	Sig. (2-tailed)		0.000	0.106
	N		15	15
Mean street-only VGVI at Neighbourhood	Pearson Correlation		1	<b>0.572*</b>
	Sig. (2-tailed)			0.026
	N			15
Mean SGVI at Neighbourhood	Pearson Correlation			1

\*\*correlations are significant at the 0.01 level. \*correlations are significant at the 0.05 level; (2-tailed).

**Table S2:** Difference between neighbourhood street-only and total greenness visibility.

	Paired Differences					t	df	Sig. (2-tailed)
	Mean	Std. Deviation	Std. Error Mean	95% Confidence Interval of the Difference				
				Lower	Upper			
<b>Mean VGVI at Neighbourhood - Mean street-only VGVI</b>	.036	.061	.01589	.00191	.07009	2.265	14	.040

**Table S3:** Correlations between neighbourhood dwelling numbers and neighbourhood average greenness visibility measurements.

		Mean VGVI at Neighbourhood	Mean street-only VGVI
<b>Number of Dwellings</b>	Pearson Correlation	-.653**	-.589*
	Sig. (2-tailed)	.008	.021
	N	15	15

\*\* . Correlation is significant at the 0.01 level (2-tailed). \* . Correlation is significant at the 0.05 level (2-tailed).