

Supplementary Materials

Supplementary Figure S1:

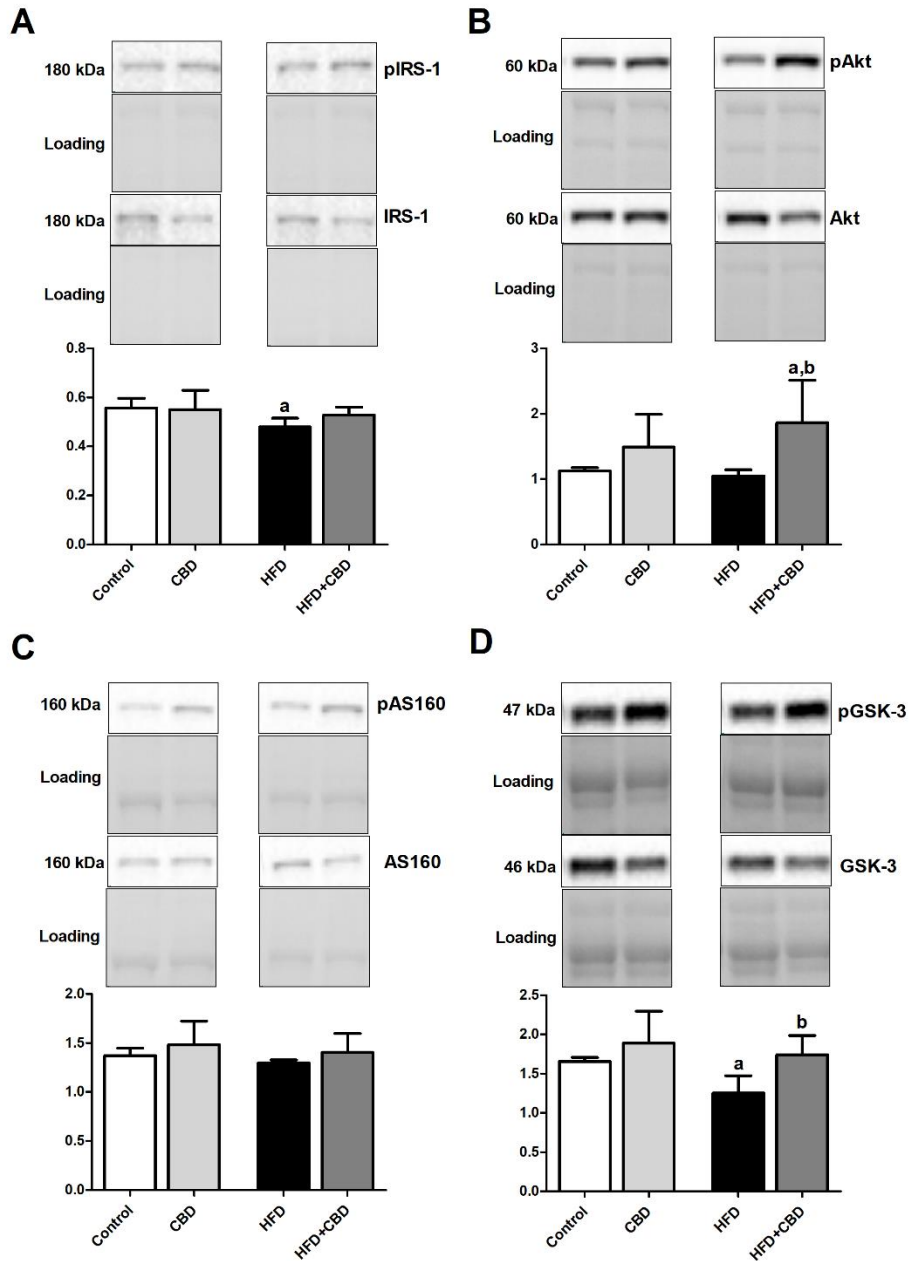


Figure S1: Representative Western blots showing the ratio of total expression of phosphorylated and unphosphorylated proteins involved in insulin signaling pathway e.g., (A) phosphorylated insulin receptor substrate 1/insulin receptor substrate 1 (pIRS-1/IRS-1), (B) phosphorylated protein kinase B/protein kinase B (pAkt/Akt), (C) phosphorylated AS160 protein/AS160 protein (pAS160/AS160) and (D) phosphorylated glycogen synthase kinase 3/glycogen synthase kinase 3 (pGSK-3/GSK-3) in the *red gastrocnemius* muscle in control and HFD groups after chronic CBD treatment. The total expressions of the above proteins were presented as a percentage difference compared to the control group, which was set as 100%. The data are expressed as mean values \pm SD, $n = 6$ in each group. ^a $p < 0.05$ significant difference: control group vs. examined group; ^b $p < 0.05$ significant difference: HFD vs. HFD+CBD