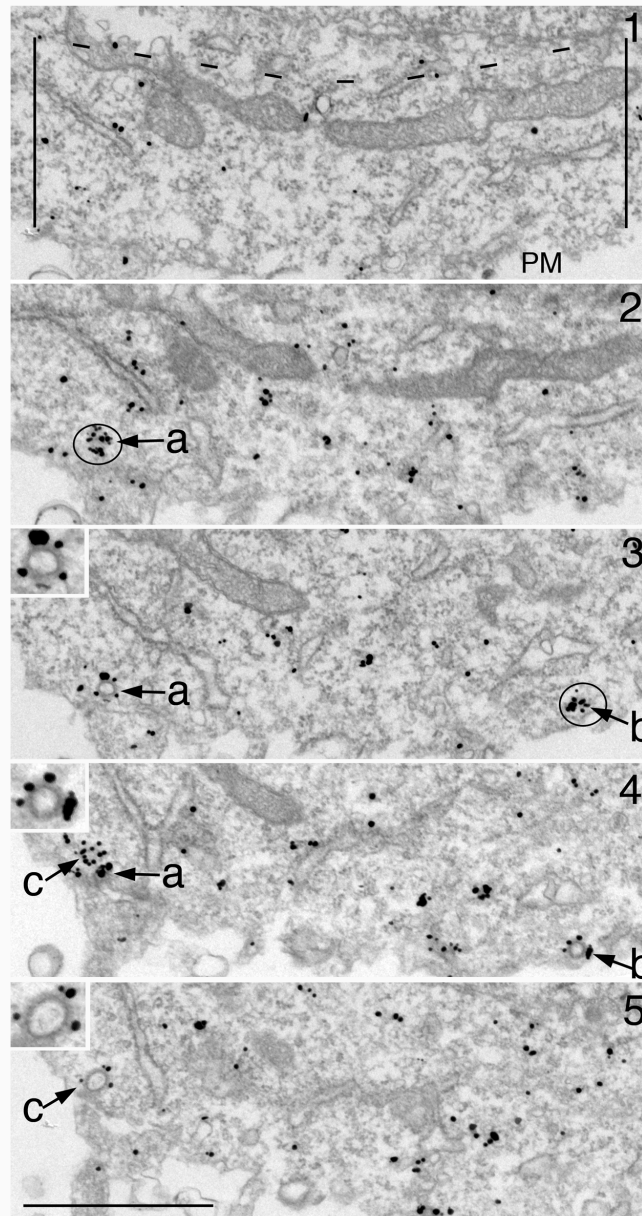


Additional File 3. Serial sections (# 1-5) of a neuronal soma labeled for clathrin.



For measurement of number of CCVs and CCPs near plasma membrane (PM), a band of cytoplasm within 1 μm from the PM was included for measurement (area marked by PM and the dashed line in section #1). CCVs (marked as “a” in section #3, “b” in section #4, and “c” in section #5; enlarged as insets) existed in 2-3 serial sections. The adjacent sections to these clear-cut CCVs typically contained tightly clustered labels for clathrin (circled in sections # 2 and #3, with more than 5 particles within a 100 nm area). Scale bar = 1 μm .