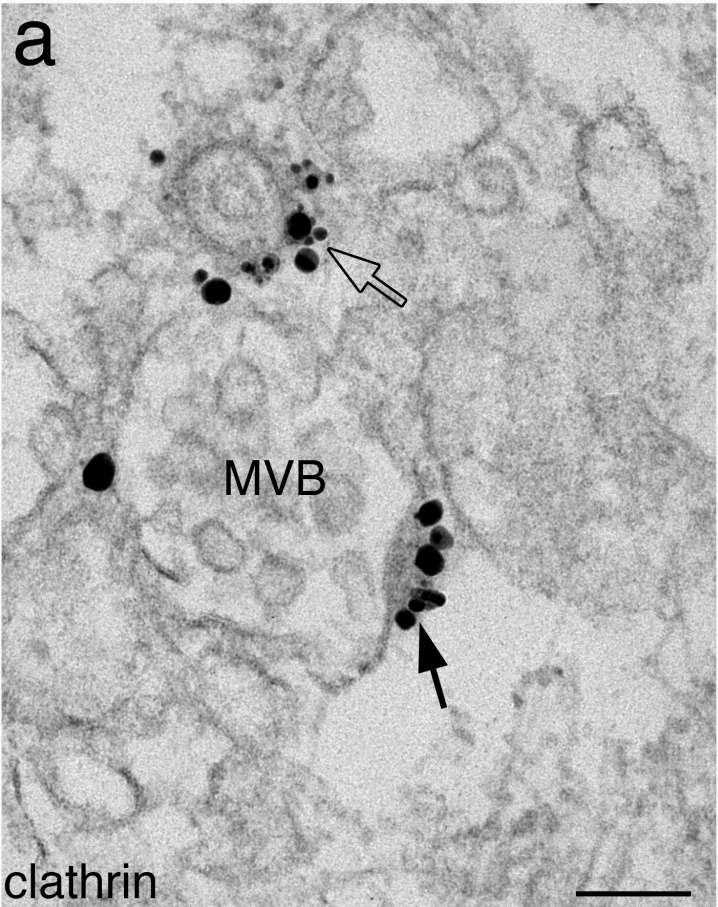
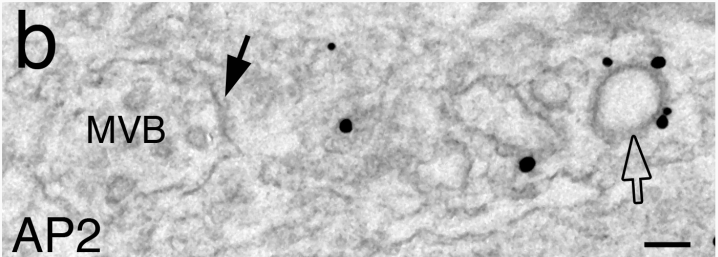


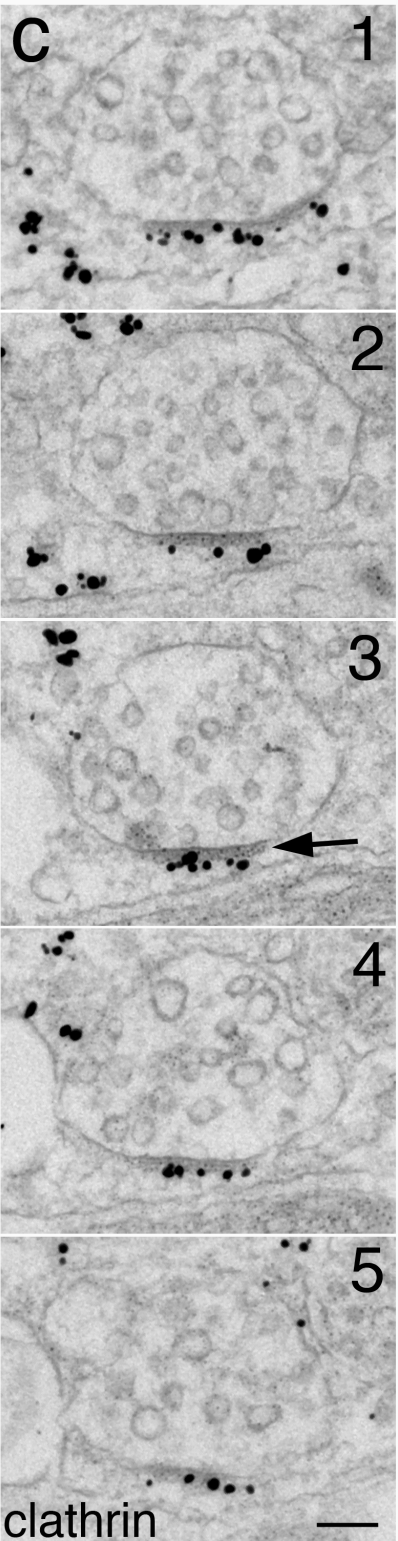
Additional file 4. Multivesicular body in astrocytes (a, b) and neuron (c).



(a) A multivesicular body (MVB) with a patch of clathrin labeling (black arrow) on its limiting membrane. Open arrow points to a nearby clathrin-coated vesicle. Image from cytoplasm of an astrocyte in dissociated hippocampal cultures.



(b) The clathrin patch of MVB in astrocyte does not label for AP2 (black arrow). However, clathrin-coated vesicle does label for AP2 (open arrow). Scale bars = 100 nm.



(c) Serial sections (1-5) of a clathrin-labeled MVB in a neuronal dendrite.