

Figure S4

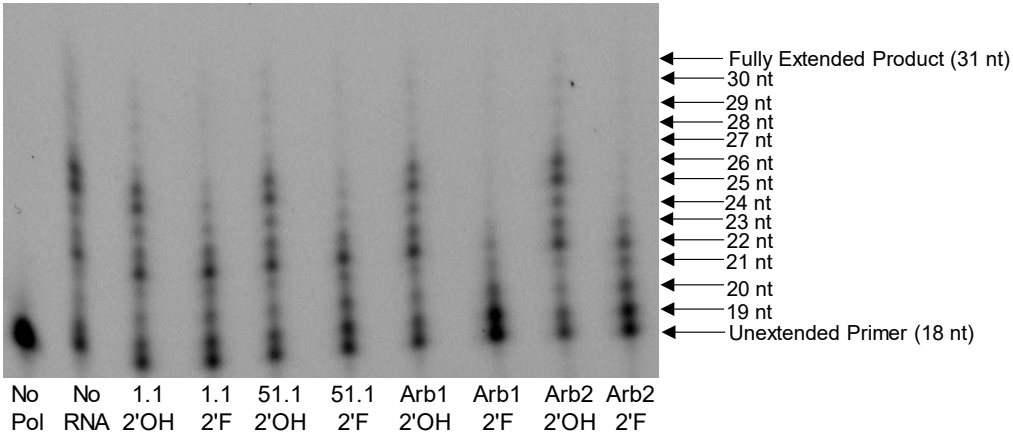


Figure S4. Representative Primer Extension Gel for Human Polymerase Beta. Primer extension by hPolβ in the presence of the 2'-OH or 2'-FY RNA sequences labeled below each lane was quantified to determine the mean number of nucleotides incorporated (n=4). The bands corresponding to the unextended primer (18 nt), fully extended product (31 nt), and intermediate products are annotated on the gel.