

Supplementary Materials for

Atrophy associated with tau pathology precedes overt cell death in a mouse model of progressive tauopathy

Christine W. Fung, Jia Guo, Hongjun Fu, Helen Y. Figueroa, Elisa E. Konofagou, Karen E. Duff*

*Corresponding author. Email: k.duff@ucl.ac.uk

Published 16 October 2020, *Sci. Adv.* **6**, eabc8098 (2020)
DOI: 10.1126/sciadv.abc8098

This PDF file includes:

Fig. S1

Supplementary Materials

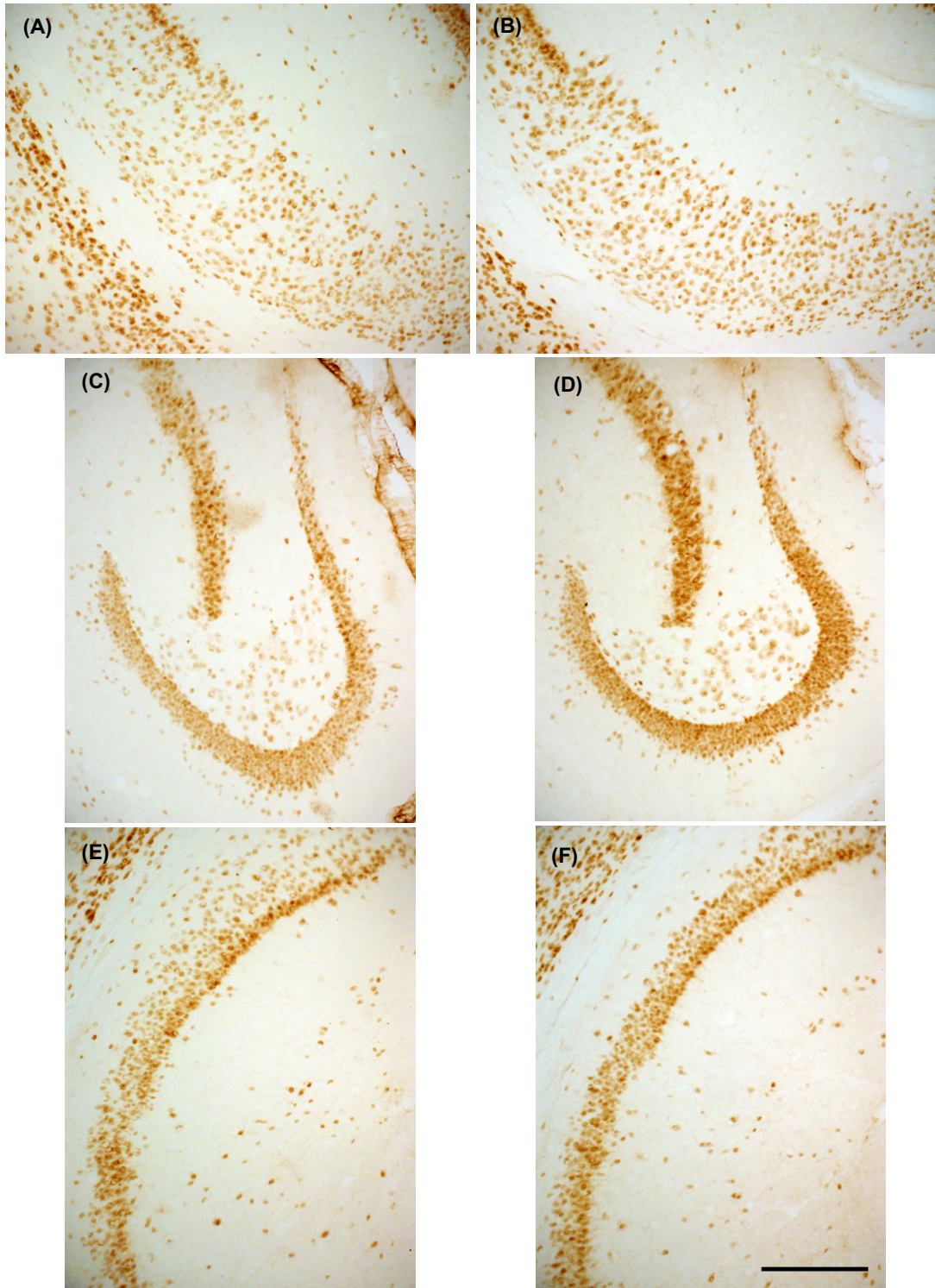


Figure S1: Mouse sections in the medial temporal lobe (MTL) stained with anti-NeuN antibody. NeuN⁺ neurons are indicated with brown staining. Number of NeuN⁺ neurons were counted in the MTL at the moderate stage (30-36 months old). Representative NeuN⁺ stained slice in the

Sub of **(A)** an EC-Tau mouse, and **(B)** a control mouse, DG of **(C)** an EC-Tau mouse, and **(D)** a control mouse, and CA1 of **(E)** an EC-Tau mouse, and **(F)** a control mouse. Scale bar, 200 μm . Subiculum (Sub), dentate gyrus (DG), cornu ammonis (CA1).