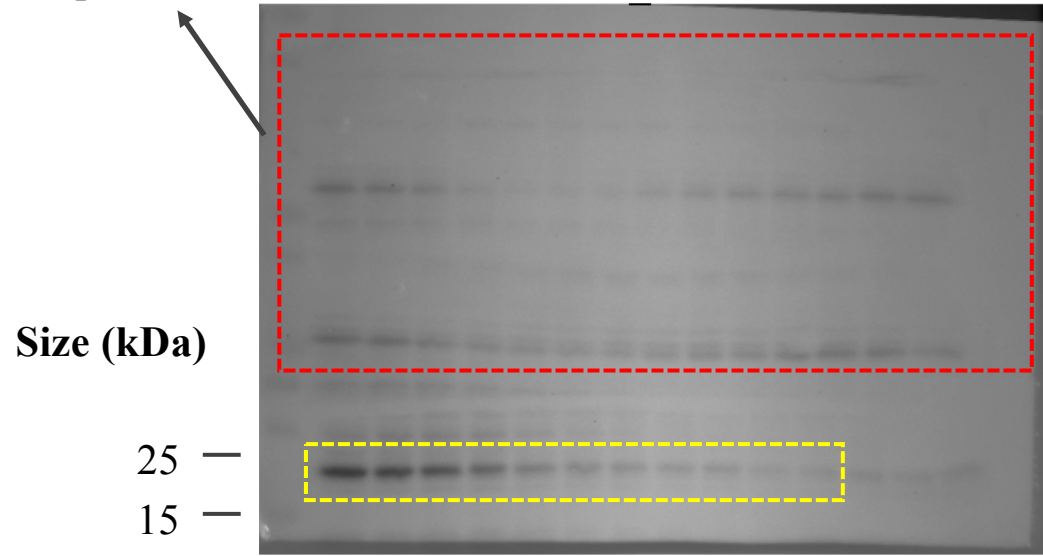


# Full scan of western blot for panels of figures 1e; 3e

Unpublished data

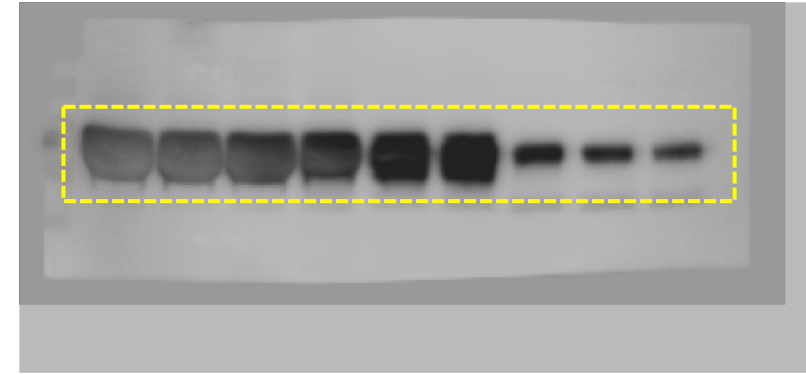
Control\_NDM-1



Size (kDa)

Control\_MCR-1

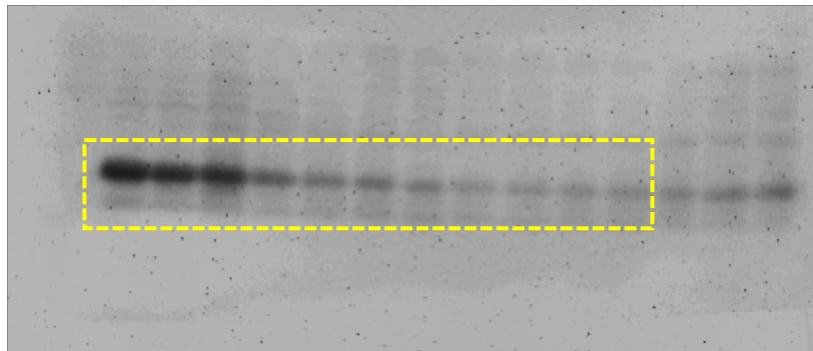
70 —  
55 —  
40 —  
35 —  
25 —



Size (kDa)

AUR treated\_NDM-1

40 —  
35 —  
25 —  
15 —



Size (kDa)

AUR treated\_MCR-1

55 —  
40 —  
35 —  
25 —

