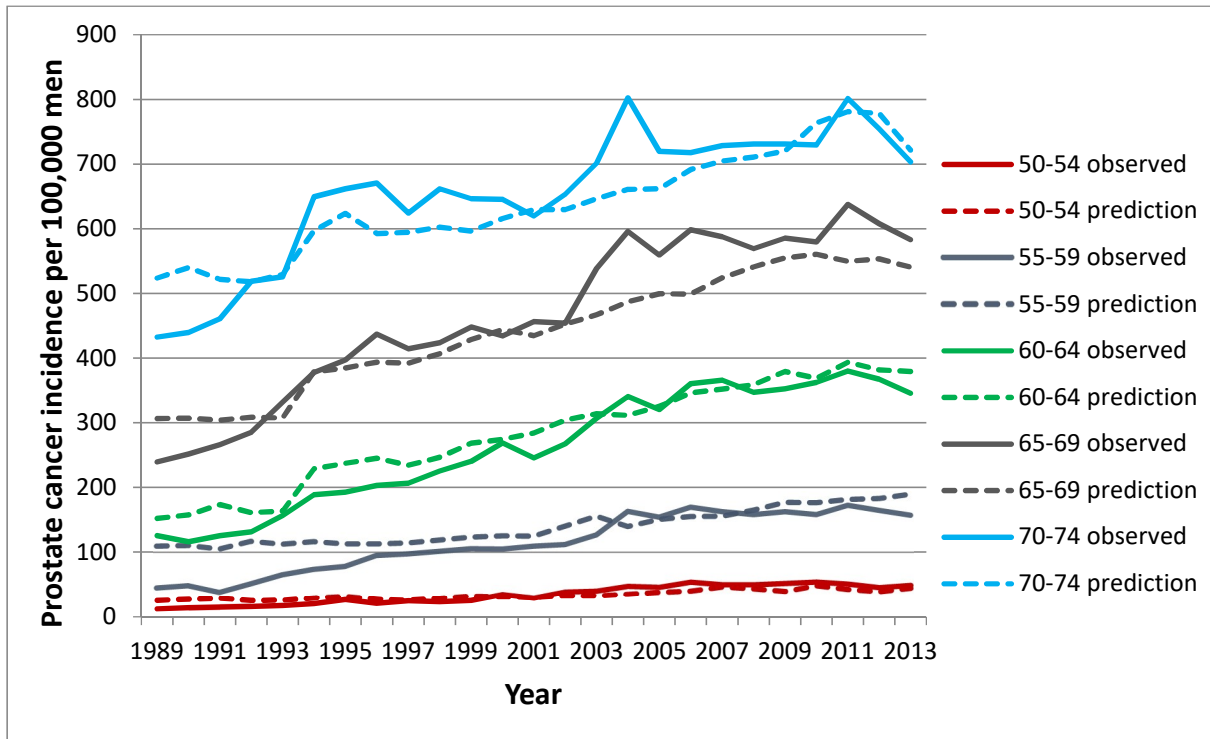
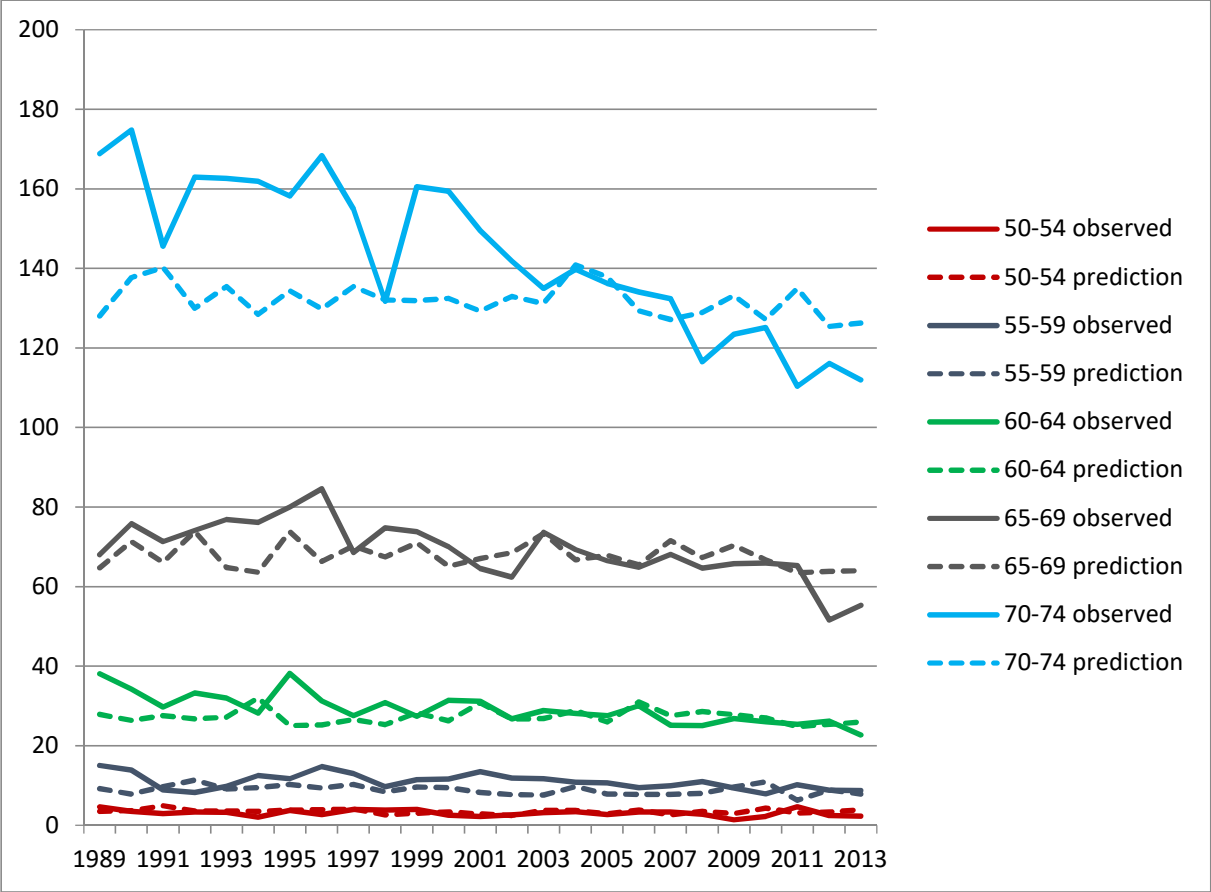


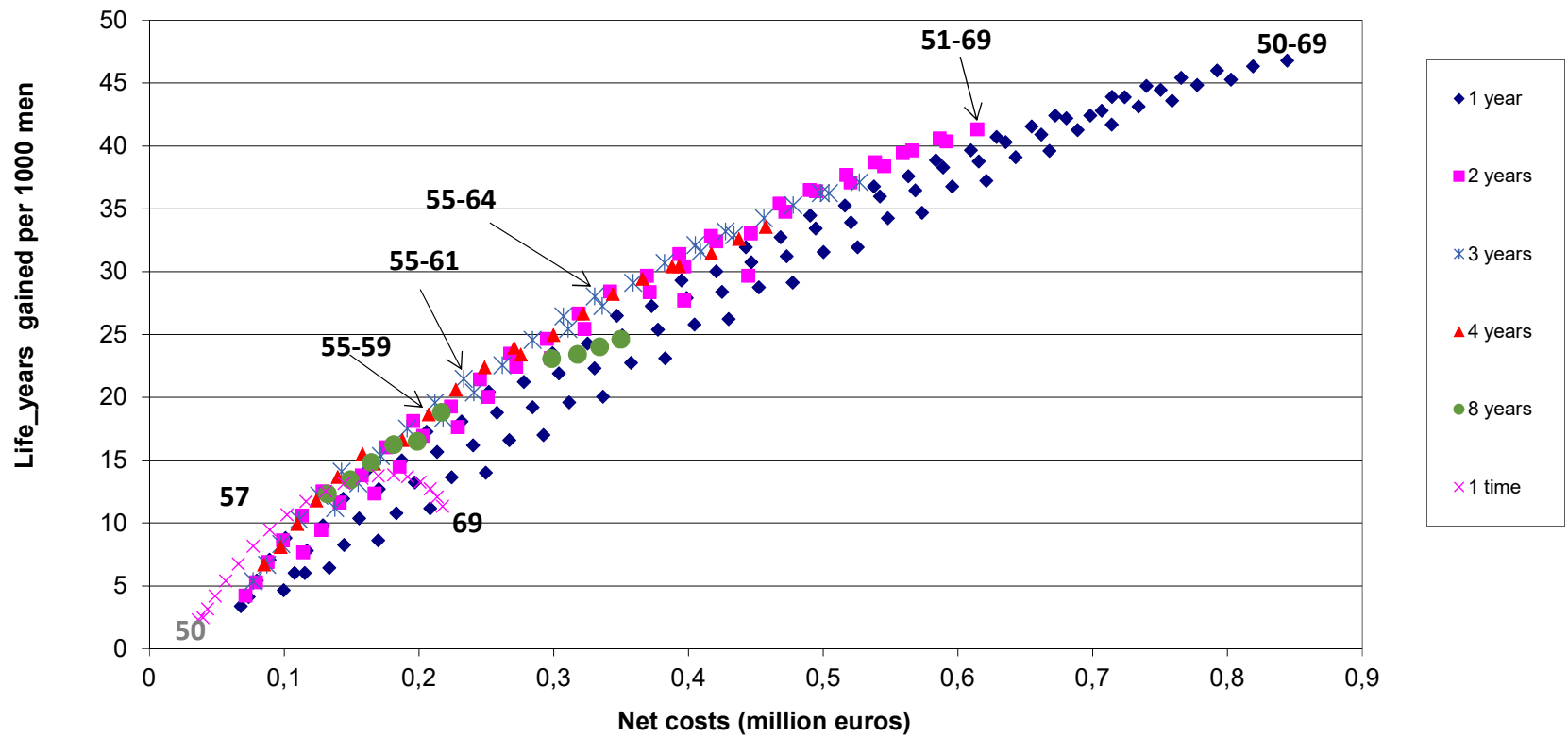
## Appendix



Appendix Figure 1. Observed and predicted prostate cancer incidence rates per 100,000 men across different age categories.



Appendix Figure 2. Observed and predicted prostate cancer mortality rates per 100,000 men across different age categories.



Appendix Figure 3. Net costs and life-years gained per 1000 men. The start and end age of most optimal strategies given 1,2,3,4,8 and once depicted in the figure. Numbers in the legend indicate the screening intervals used in the model.