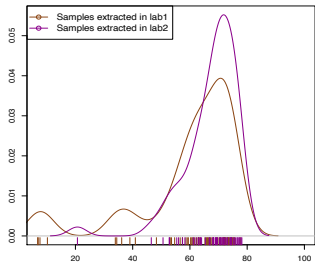
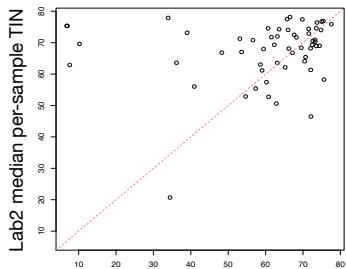


A.



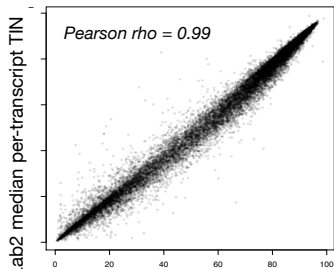
Median per-sample TIN distribution

B.



Lab1 median per-sample TIN

C.



Lab1 median per-transcript TIN

Supplementary Figure 7: Comparison of TIN in extraction replicates. A) Median per-sample TIN is slightly higher in Lab2. B) Median per-sample TIN tends to be higher in Lab2 samples. C) Median per-transcript TIN is highly correlated between two labs.