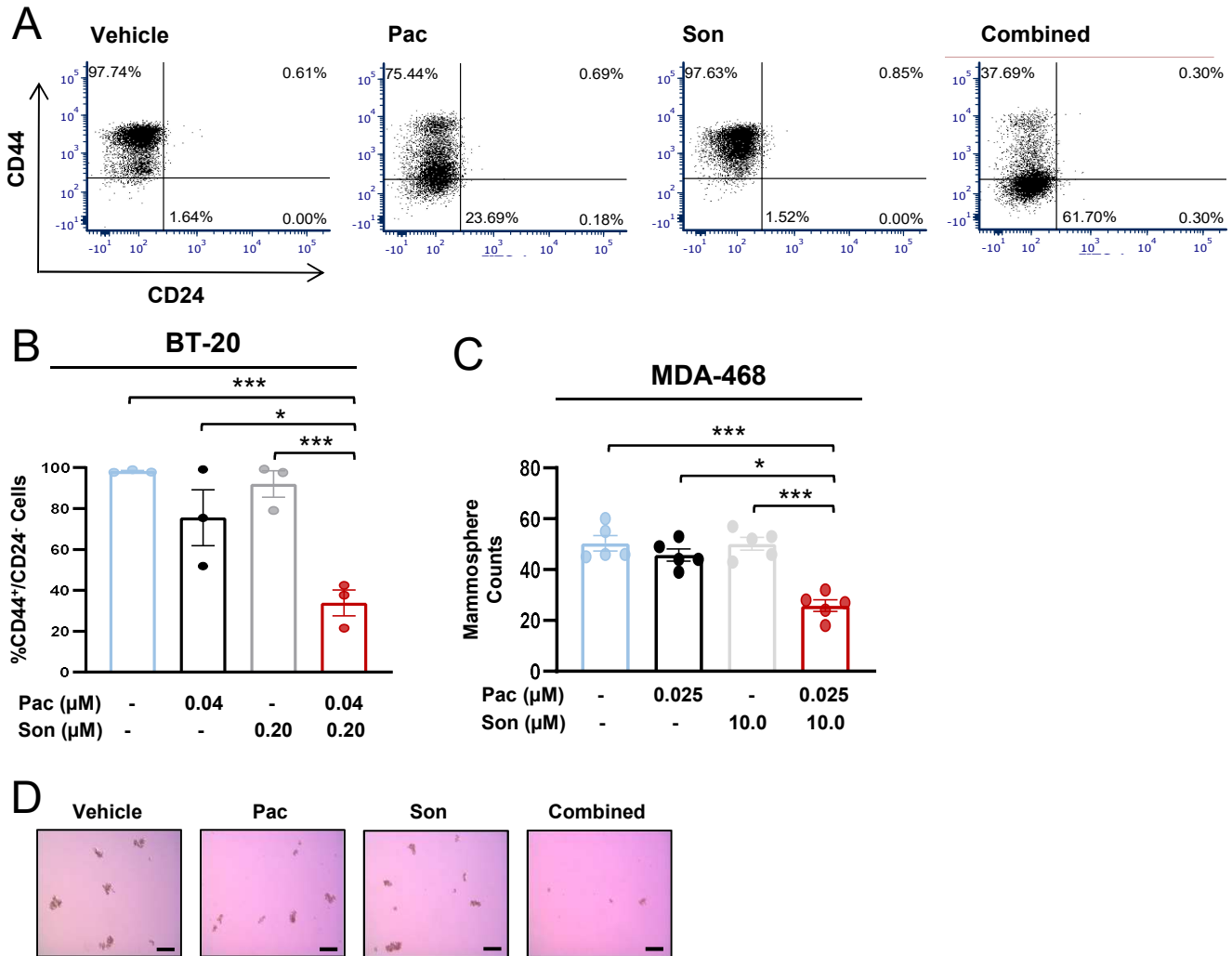
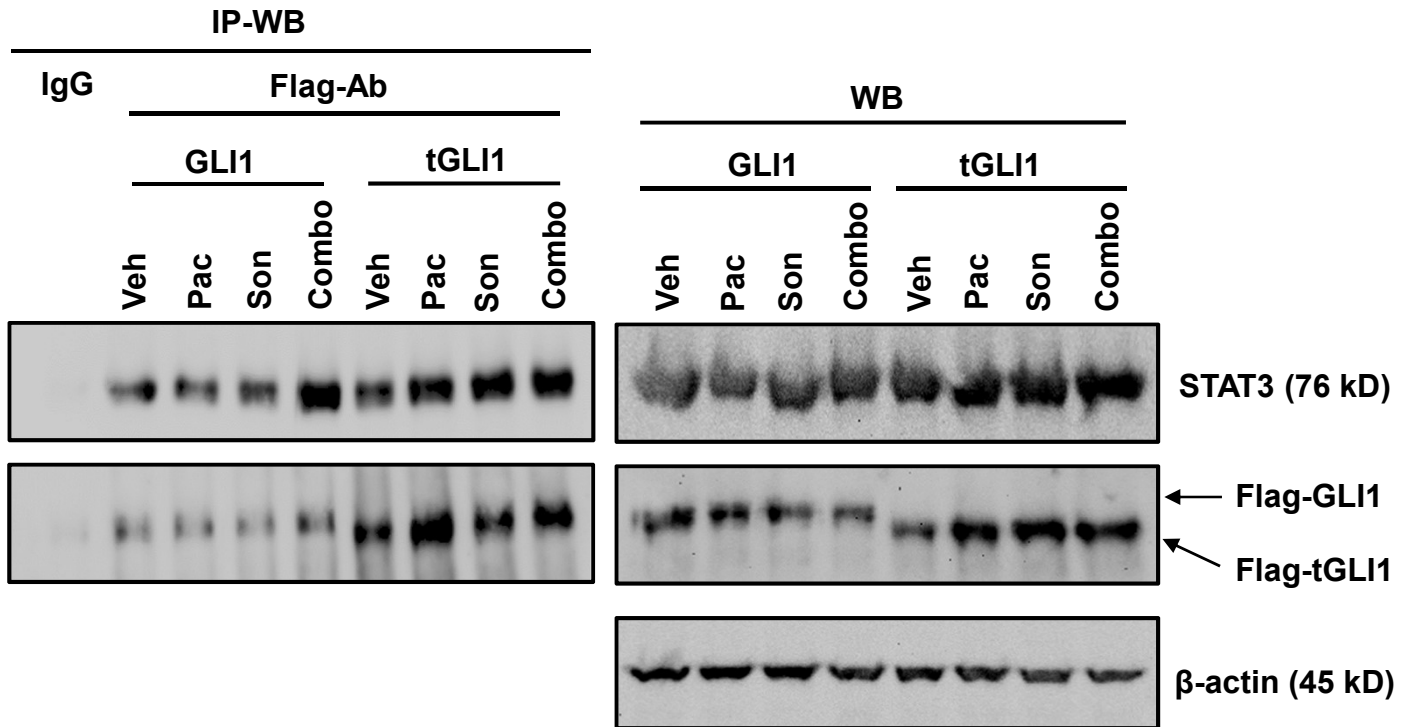


Supplementary Data



Supplementary Figure 1. Simultaneous inhibition of JAK2-STAT3 and SMO signaling pathways suppresses the BT474-TzmR and TNBC cancer stem cell population. A) Representative flow cytometry scatter plots of CD44⁺/CD24⁻ BT474-TzmR cells. **B)** Pacritinib-Sonidegib combination treatment suppressed the CD44⁺/CD24⁻ population. **C)** Pacritinib-Sonidegib combination treatment reduced TNBC MDA-468 mammosphere formation. **D)** Representative images of MDA-468 mammospheres. Images were taken under 5X magnification. Scale bar represents 200 μm . Data are presented as mean \pm SEM of 3-5 experimental replicates. One-way ANOVA with Tukey's multiple comparison *post hoc* test was used to compute p values. *, $p < 0.05$; ***, $p < 0.001$.



Supplementary Figure 2. Pacritinib-Sonidegib combination treatment does not disrupt the STAT3-GLI1/tGLI1 interaction. STAT3 similarly interacted with GLI1 and tGLI1 regardless of treatment as shown by immunoprecipitation western blot using MDA-231 cells co-transfected with STAT3 and either Flag-GLI1 or Flag-tGLI1.

Supplementary Table 1. RT-qPCR primers

Gene	Forward sequence (5'-3')	Reverse Sequence (3'-5')
Bcl-2	TGTTAATATCAGTCTACTTCCTCTGTG	GCTATAACTGGAGAGTGCTGAA
Nanog	CTAAGAGGTGGCAGAAAAACA	CTGGTGGTAGGAAGAGTAAAGG
VEGFA	TGTCTAATGCCCTGGAGCCT	TTAACTCAAGCTGCCTCGCC
GAPDH	ACTGCCAACGTGTCAGTGG	GTGTCGCTGTTGAAGTCAGA