

Supplemental Table 1. Classification statistics and univariate Cox-PH model for different cut-off value of CURB-65

cut-off	Logistic model				Cox model			
	Sensitivity (recall)	Specificity	PPV (precision)	NPV	F1 score	HR(95% CI)	p value	AIC
1	0.90	0.47	0.55	0.87	0.68	5.94 (1.80, 19.58)	0.0034	227.7
2	0.68	0.81	0.72	0.78	0.70	5.04 (2.36 , 10.76)	<.0001	222.1
3	0.26	1.00	1.00	0.65	0.41	5.26 (2.31 , 11.98)	<.0001	229.4

PPV: Positive predictive value; NPV: negative predictive value; F1 score was calculated as $2/(1/\text{precision} + 1/\text{recall})$. Analysis shows highest F1 score and smallest AIC when CURB-65 was stratified by 2.

Supplement Table 2 Characteristics according to CURB-65 score

Variable	All	CURB65 < 2 (N = 45)	CURB65 >=2 (N = 29)	P value
Demographics and clinical characteristics				
Age(years)	64 (56, 72)	60 (51, 65)	71 (65, 80)	<0.0001**
Gender(Male%)	43 (58.11%)	28 (62.22%)	15 (51.72%)	0.37
Hypertension_(%)	23 (31.08%)	15 (33.33%)	8 (27.59%)	0.6
Diabetes_(%)	13 (17.57%)	7 (15.56%)	6 (20.69%)	0.57
Length of stay(days)	15.5 (9, 27)	20 (13, 32)	10 (4, 17)	0.0005**
Symptoms and signs				
Cough(%)	52 (70.27%)	34 (75.56%)	18 (62.07%)	0.22
Fever(%)	57 (77.03%)	34 (75.56%)	23 (79.31%)	0.71
Dyspnea(%)	40 (54.05%)	21 (46.67%)	19 (65.52%)	0.11
Temperature(°C)	36.6 (36.2, 37.5)	36.7 (36.3, 37.4)	36.5 (36.2, 37.55)	0.94
Respiratory rate≥24 breaths per min	19 (26.39%)	5(11.1%)	14 (51.85%)	0.0001**
Heart rate(bpm)	86 (78, 100)	85 (80, 98)	87 (78, 110)	0.21
SpO2(%)	96 (91, 98)	97 (93, 98)	92 (81, 95.5)	0.0003**
SBP (mmHg)	131 (120, 146)	134 (125, 146)	127 (117, 145)	0.28
DBP (mmHg)	79 (74, 89)	82 (78, 91)	75 (70, 87)	0.01*
Laboratory Findings				
Complete Blood Count(CBC)				
WBC(*10 ⁹ /L)	6.7 (5.1, 8.2)	6.5 (4.8, 7.7)	8.1 (5.7, 11.1)	0.004**
Neutrophil(*10 ⁹ /L)	5.55 (3.96, 7.2)	4.68 (3.63, 6.12)	7.02 (4.45, 10.145)	0.0007**
Lymphocyte(*10 ⁹ /L)	0.89 (0.58, 1.37)	1.05 (0.67, 1.41)	0.68 (0.41, 0.945)	0.004**
Neutrophil-to-lymphocyte ratio(NLR)	6.51 (3.43, 10.286)	4.34 (2.42, 7.25)	10.83 (4.73, 21.686)	<0.0001**
Hemoglobin(g/L)	126 (111, 142)	121 (115, 145)	127.5 (104.5, 138)	0.69
Platelet(*10 ⁹ /L)	190 (153, 235)	204 (168, 235)	160 (116, 237)	0.03*
Inflammatory or tissue injury markers				
C reactive protein(mg/l)	40.95 (10.63, 92.29)	33.52 (6.17, 72.6)	65.01 (24.31, 98.605)	0.2

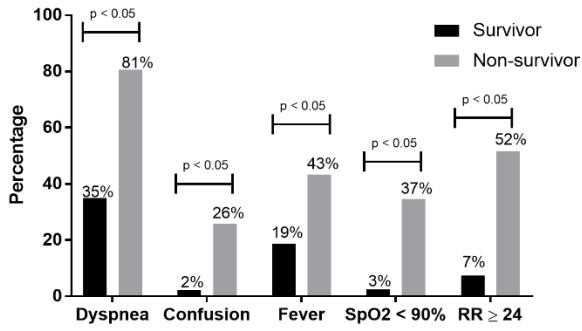
Lactic dehydrogenase(U/L)	370 (214.5, 531.5)	284 (199, 408)	489 (358, 591)	0.003**
α-Hydroxybutyrate dehydrogenase(U/L)	306.5 (170, 449)	227 (151, 343)	444 (306, 514)	0.0009**
Liver and renal function				
Alanine aminotransferase(U/L)	33.5 (23, 52)	31 (22, 51)	36 (23, 53)	0.56
Aspartate aminotransferase(U/L)	35 (22, 49)	30 (20, 44)	37 (25, 60)	0.15
Serum pre-albumin(mg/L)	131.4 (85.9, 209.9)	144.3 (88.6, 247.6)	122.9 (84.3, 202.5)	0.18
Serum albumin(g/L)	29.4 (25.4, 33.8)	31.7 (26.1, 38.2)	27.1 (24.5, 29.4)	0.006**
Blood urea nitrogen(mmol/L)	6.4 (4.3, 10.0)	4.7 (3.7, 6.3)	10.0 (7.6, 17.2)	<0.0001**
eGFR(ml/min)	90.7 (68.9, 111.7)	100.0 (78.2, 121.9)	74.0 (30.6, 91.3)	0.0004**
Cardiac injury markers				
Creatine kinase(U/L)	78.5 (45, 170)	62 (43, 170)	97 (46, 187)	0.2
Creatine kinase-MB(U/L)	13 (10, 20)	12 (9, 15)	18 (13, 26.5)	0.009**
Coagulation				
Prothrombin time(s)	13.55 (12.7, 14.7)	13.1 (12.45, 14.05)	14.25 (13.2, 15)	0.006**
Activated partial thromboplastin time(s)	37.15 (33.5, 42.3)	37.4 (34.55, 41.1)	36.7 (30.6, 42.5)	0.52
D-Dimer(ug/ml)	0.86 (0.3, 6)	0.51 (0.25, 2.34)	5.37 (0.98, 8)	0.004**

Supplement Table 3 Number of people at risk of death for CURB-65 survival curve

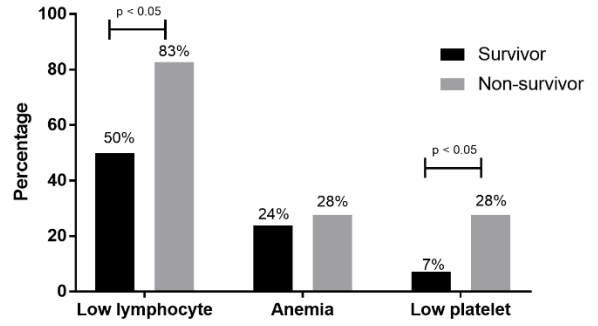
Days elapsed	CURB-65 < 2		CURB65 ≥ 2	
	Number at risk	Number censored	Number at risk	Number censored
0	45		29	
1			29	
2			27	
3			23	
4	45		22	
5	44		21	
6	43			
7	42	1	19	1
8			17	
9	40	3	16	
10			15	
11			14	
12	37	4	13	
13	35	5	12	2
14	33	8	11	
15	30	9	10	3
16	28	11	9	
17			8	
18	26	14	7	4
20	23	15	6	5
21	22	19	5	6
22	18	20		
24			4	
27	17	21		
30	16	24		
31	13	25		
32	12	26		
34	11	27		
35	10	29		
38	8	30		
39	7	31		
40	5	32		
45	4			
46	3	34		
48			2	7
49	1	35		
51			1	8

Supplement Figure1

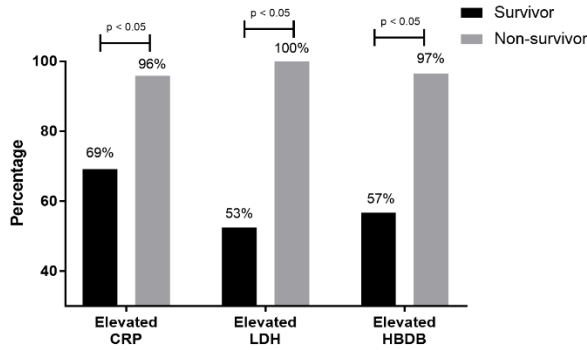
A Symptoms and Signs for survivor and non-survivors



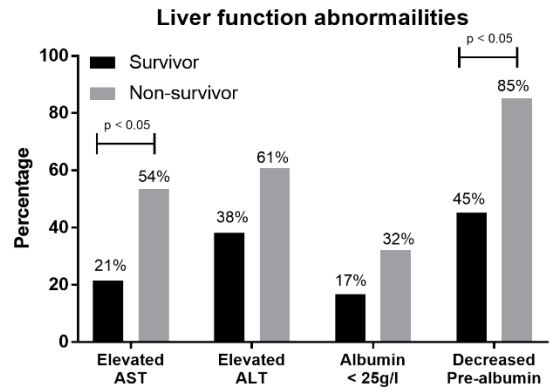
B CBC abnormalities



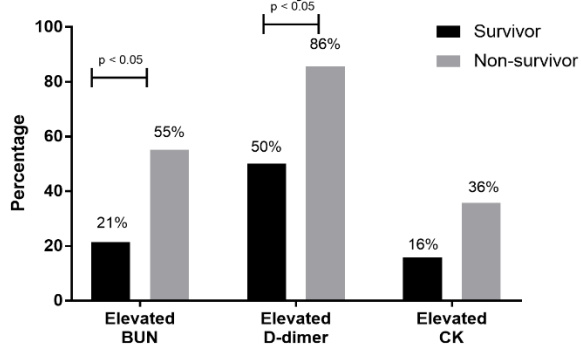
C Inflammatory and tissue injury markers abnormality



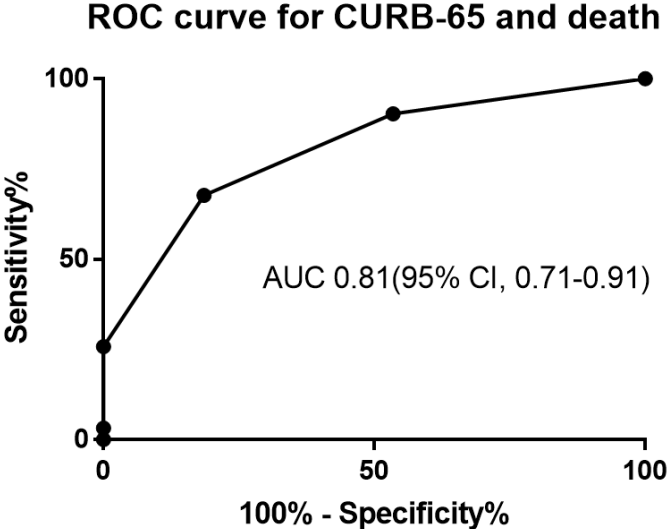
D



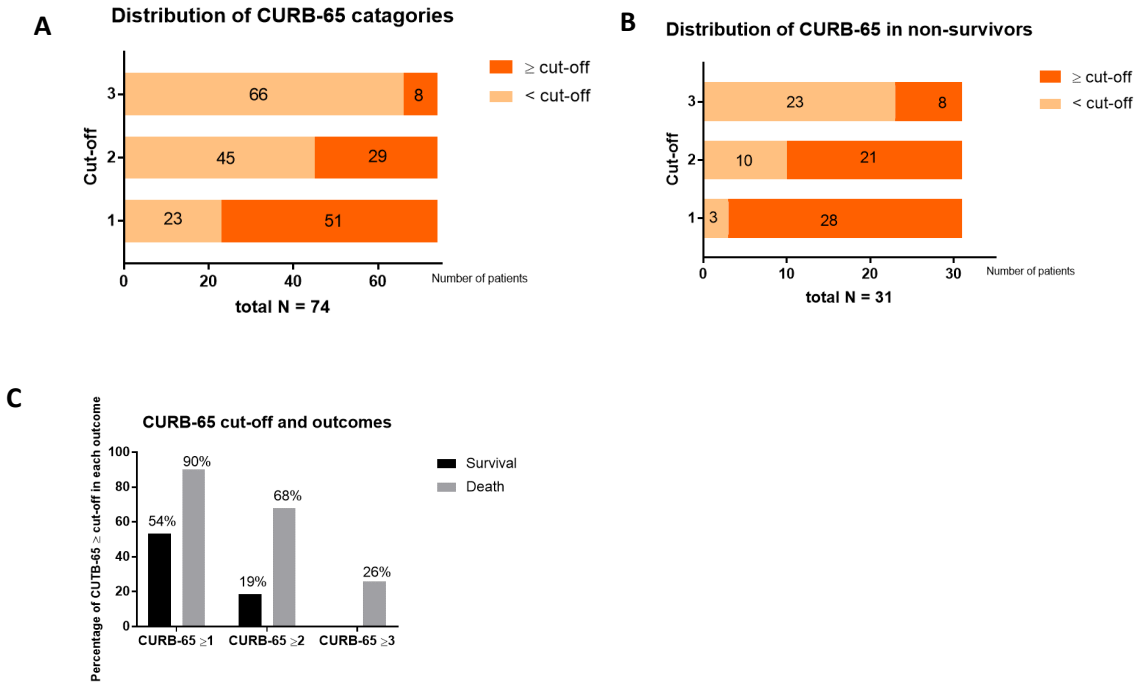
E Other laboratory abnormalities



Supplement Figure2

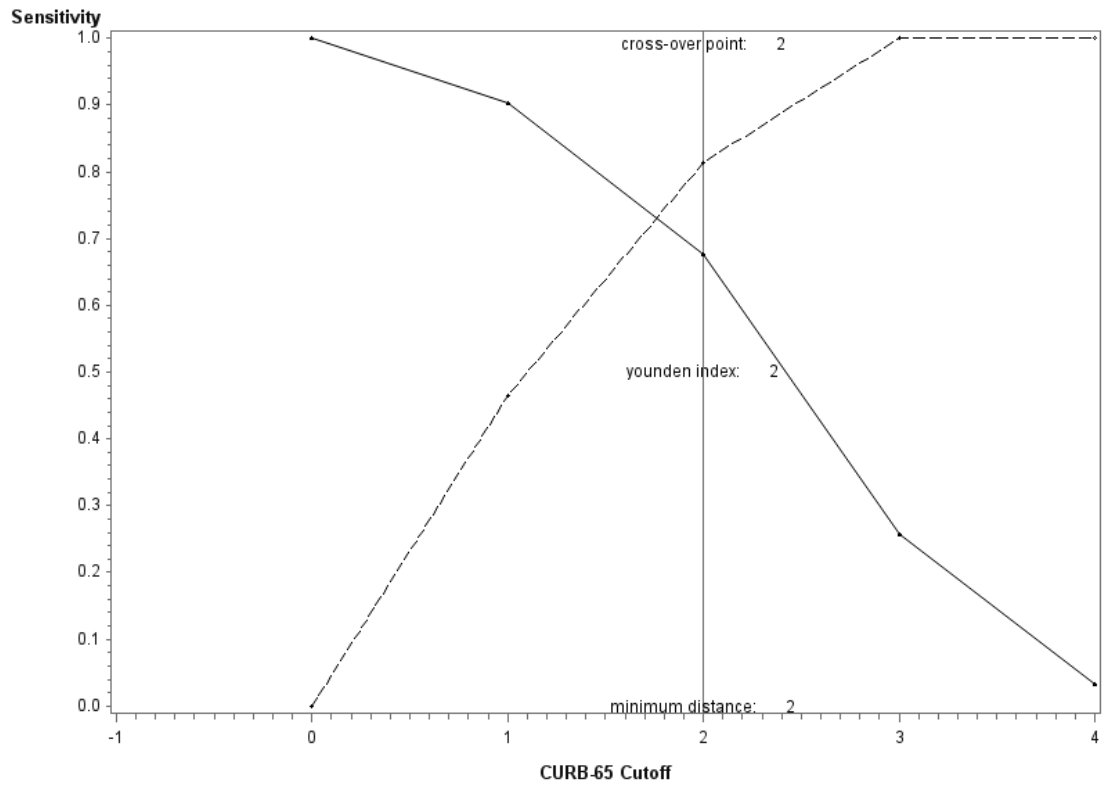


Supplemental Figure 3.



Supplemental Figure 4.

Sensitivity - Specificity curve: CURB-65 and death



Supplemental Figure 5.

