

Movie legend

Movie S1. Comparison of the 3 tail structures. Successive frames switch between the cross-sections of the free, virion and ejected tail tubes

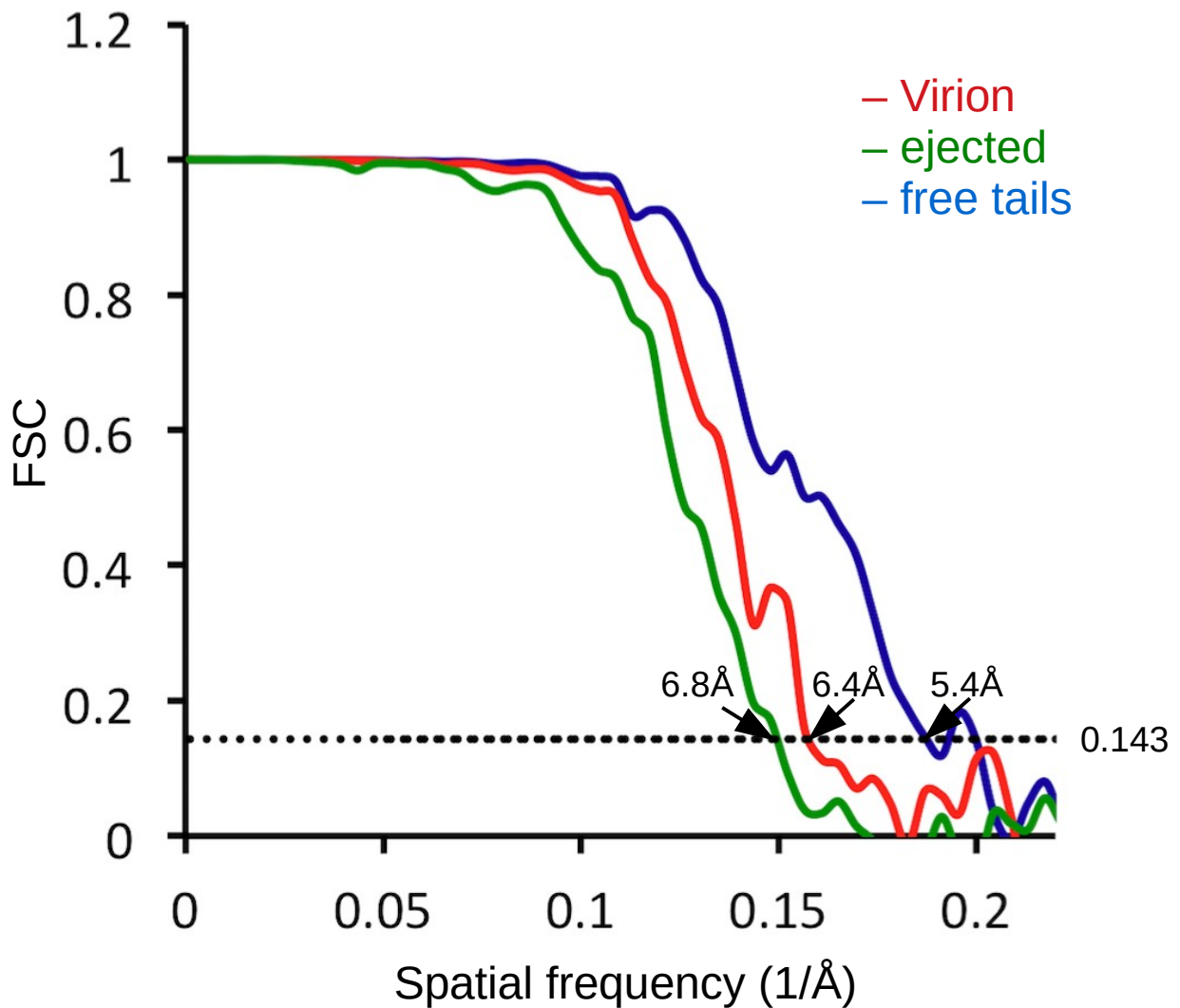


Figure S1. “Gold standard” Fourier shell correlation (FSC) curves of the virion, ejected, and free tail tube reconstructions. The dashed line indicates the 0.143 threshold at which resolution is estimated.

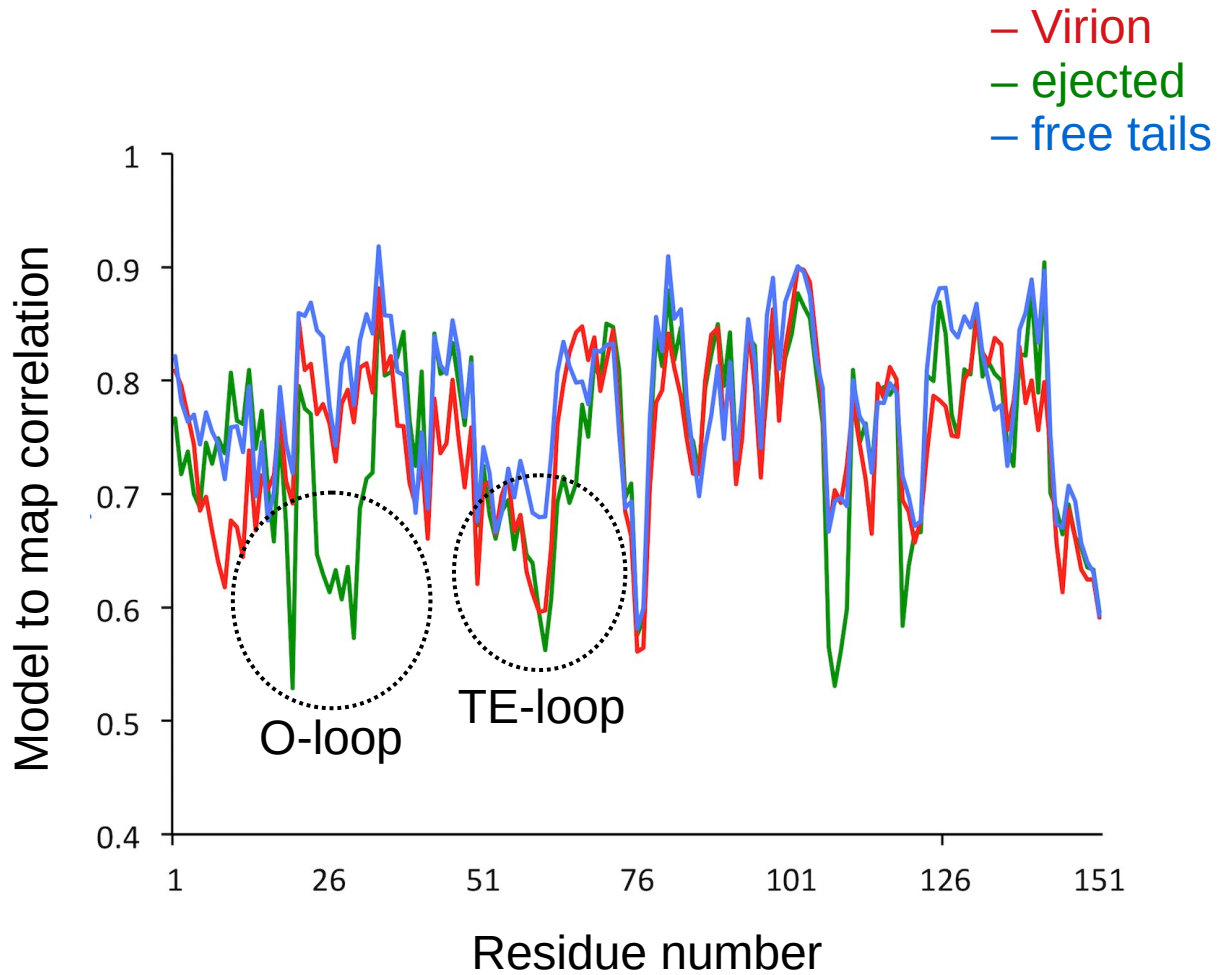


Figure S2. “per residue” correlation between the gpV_N model and the 3 maps. Dashed circles emphasize 2 structural domains with slight differences between the maps.

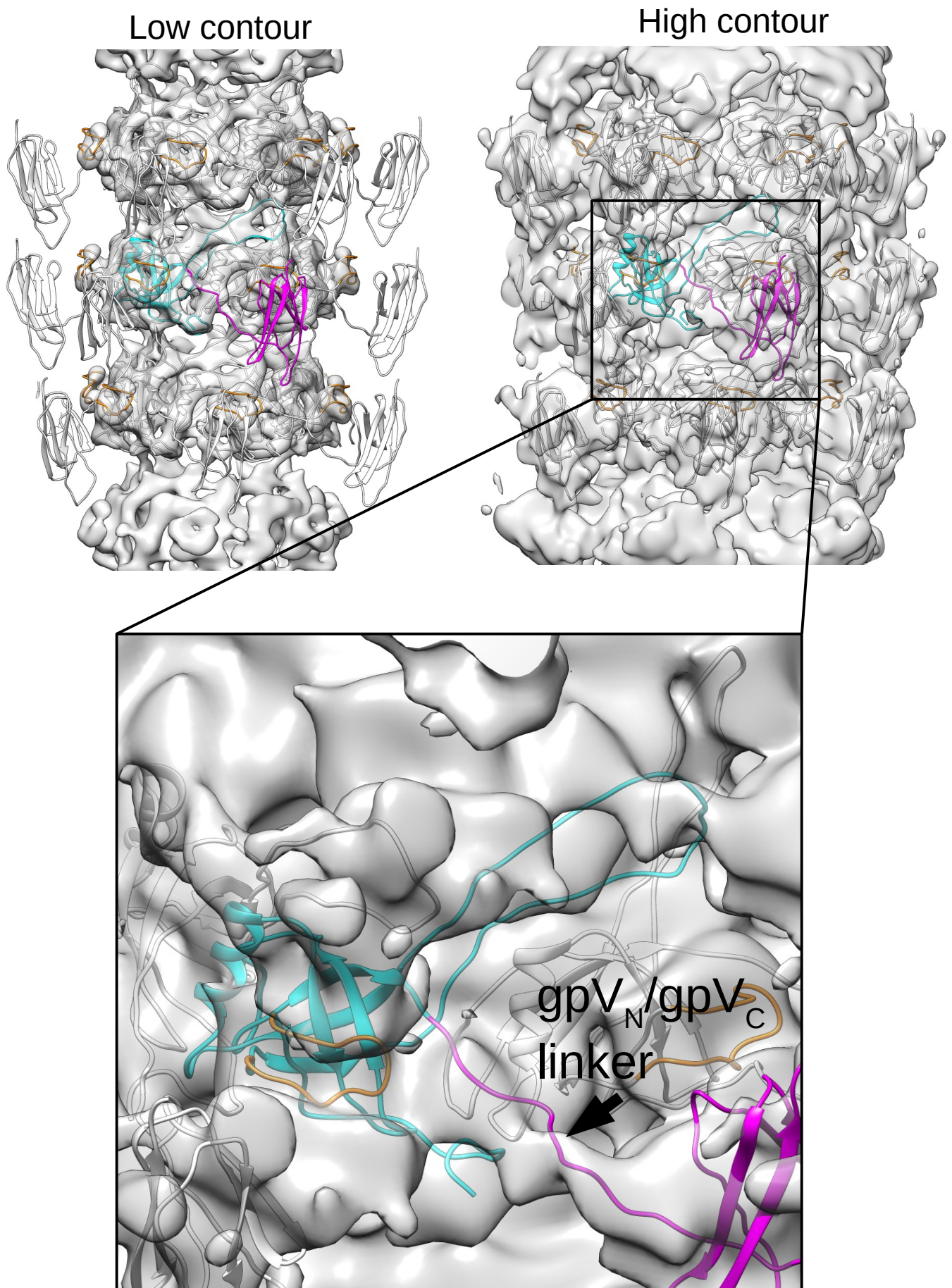


Figure S3. Free lambda tail map shows at (top left) low contour level – showing mostly the density due to gpV_N – and at (top right) high contour level – showing the more flexible Ig-like domain. The high contour map shows the linker density between the two gpV domains (bottom).

model	
molprobity score	2.29
clash score	0.45
Ramachandran	
outliers	1.95%
allowed	15.58%
favored	82.47%
Model to map comparison	
virion	
CC 0.84	FSC/model (0.143): 5.9Å
ejected	
CC 0.83	FSC/model (0.143): 6.0Å
free tail	
CC 0.81	FSC/model (0.143): 5.9Å

Figure S4. Model and map statistics. CC stand for the cross-correlation calculated by phenix between the gpV_N model and the indicated map