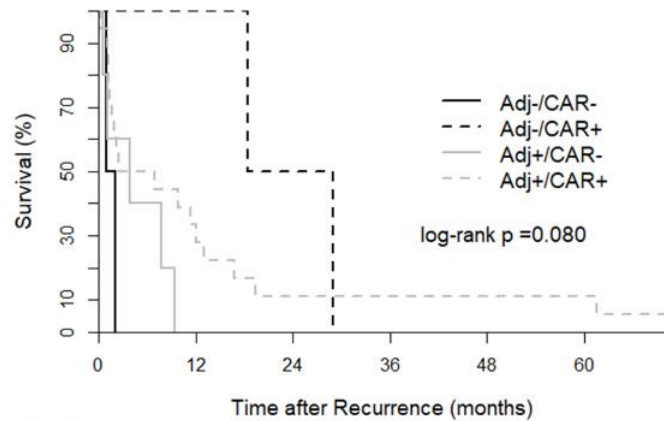
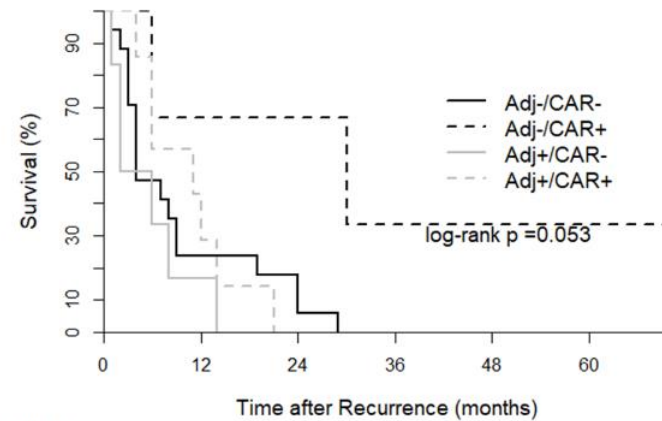


A

| Number at risk | | Time after Recurrence (months) | | | | | |
|----------------|----|--------------------------------|----|----|----|----|----|
| | | 0 | 12 | 24 | 36 | 48 | 60 |
| Adj-/CAR- | 2 | 0 | 0 | 0 | 0 | 0 | 0 |
| Adj-/CAR+ | 2 | 2 | 1 | 0 | 0 | 0 | 0 |
| Adj+/CAR- | 5 | 0 | 0 | 0 | 0 | 0 | 0 |
| Adj+/CAR+ | 18 | 6 | 2 | 2 | 2 | 2 | 2 |

B

| Number at risk | | Time after Recurrence (months) | | | | | |
|----------------|----|--------------------------------|----|----|----|----|----|
| | | 0 | 12 | 24 | 36 | 48 | 60 |
| Adj-/CAR- | 17 | 4 | 3 | 0 | 0 | 0 | 0 |
| Adj-/CAR+ | 3 | 2 | 2 | 1 | 1 | 1 | 1 |
| Adj+/CAR- | 7 | 1 | 0 | 0 | 0 | 0 | 0 |
| Adj+/CAR+ | 7 | 3 | 0 | 0 | 0 | 0 | 0 |

S7 Fig. Kaplan-Meier curves with log-rank test for survival after recurrence according to receiving adjuvant chemotherapy and chemotherapy after recurrence in the subgroups of MSI-H/dMMR gastric cancer in the Y-cohort (A) and in the S-cohort (B). Adj, adjuvant chemotherapy; CAR, chemotherapy after recurrence; n, number of patients; MSI-H, microsatellite instability; dMMR, deficient mismatch repair.