

Supporting Information for Glycosaminoglycan Compositional Analysis of Relevant Tissues in ZIKV Pathogenesis and in vitro Evaluation of Heparin as Antiviral Against ZIKV Infection

So Young Kim[†], Cheri A Koetzner[‡], Anne F. Payne[‡], Gregory J. Nierode^{||}, Yanlei Yu[‡], Rufeng Wang^{||}, Evan Barr[¶], Jonathan S. Dordick^{†,||,¶,§}, Laura D. Kramer^{‡,□}, Fuming, Zhang^{||*}, Robert J. Linhardt^{†,||,‡,¶,§*}

[†]Biochemistry and Biophysics Graduate Program, Center for Biotechnology and Interdisciplinary Studies, Rensselaer Polytechnic Institute, Troy, NY 12180, USA, [‡]Wadsworth Center, New York State Department of Health, Slingerlands, NY, 12159, USA, ^{||}Department of Chemical and Biological Engineering, Center for Biotechnology and Interdisciplinary Studies, Rensselaer Polytechnic Institute, [‡]Department of Chemistry and Chemical Biology, Center for Biotechnology and Interdisciplinary Studies, Rensselaer Polytechnic Institute, [¶]Department of Biological Science, Center for Biotechnology and Interdisciplinary Studies, Rensselaer Polytechnic Institute [§]Department of Biomedical Engineering, Center for Biotechnology and Interdisciplinary Studies, Rensselaer Polytechnic Institute, [□]State University of New York at Albany School of Public Health, Albany, NY, 12222, USA.

Supporting Information

Figure S1. Densitometric analysis of Western blot results in undifferentiated and 4-week differentiated ReNcell VM and CX for antibodies against A. nestin (NES), B. SOX2, C. glial fibrillary acidic protein (GFAP), D. β III-Tubulin (TUBB3), and E. CNPase (CNP) to confirm presence of NPC, astrocytes, neurons, and oligodendrocytes, respectively.

Figure S2. Western Blot membranes A. from ReNcell VM lysate probed for the noted markers and B. of the same membranes stripped and re-probed for beta-actin as a loading control. U = undifferentiated cells, D = 4-week differentiated cells, LAD = ladder.

Figure S3. Western Blot membranes A. from ReNcell CX lysate probed for the noted markers and B. of the same membranes stripped and re-probed for beta-actin as a loading control.

Figure S1

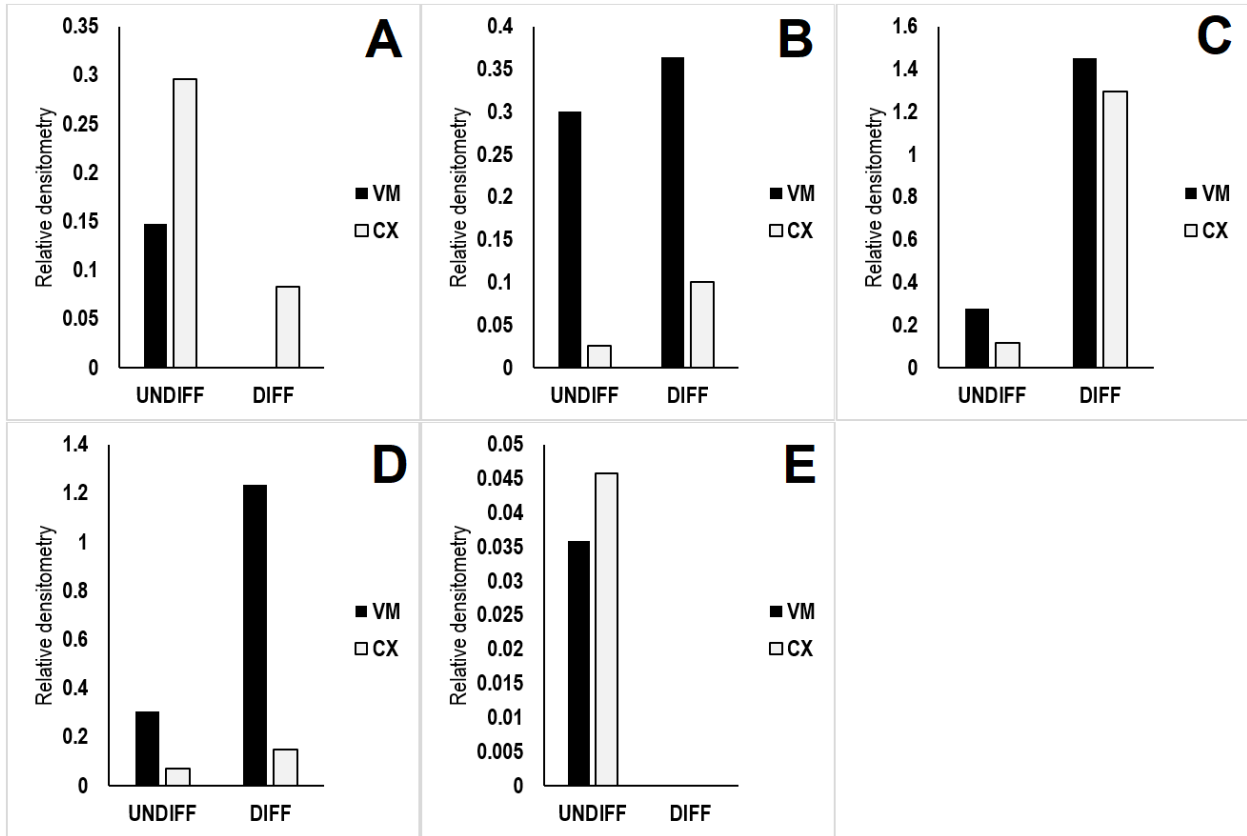


Figure S2

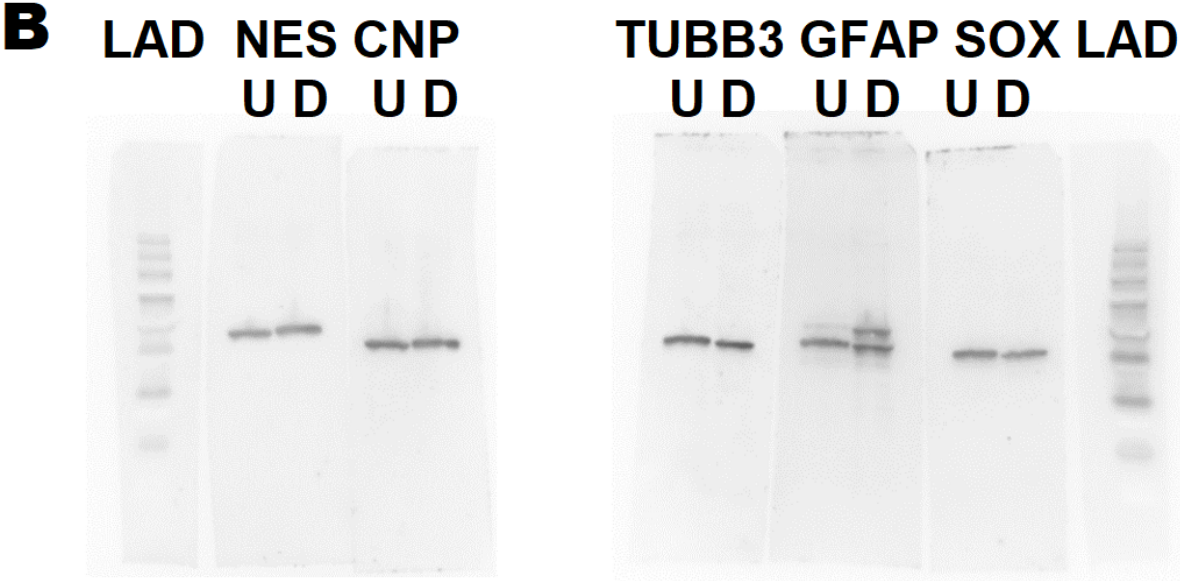
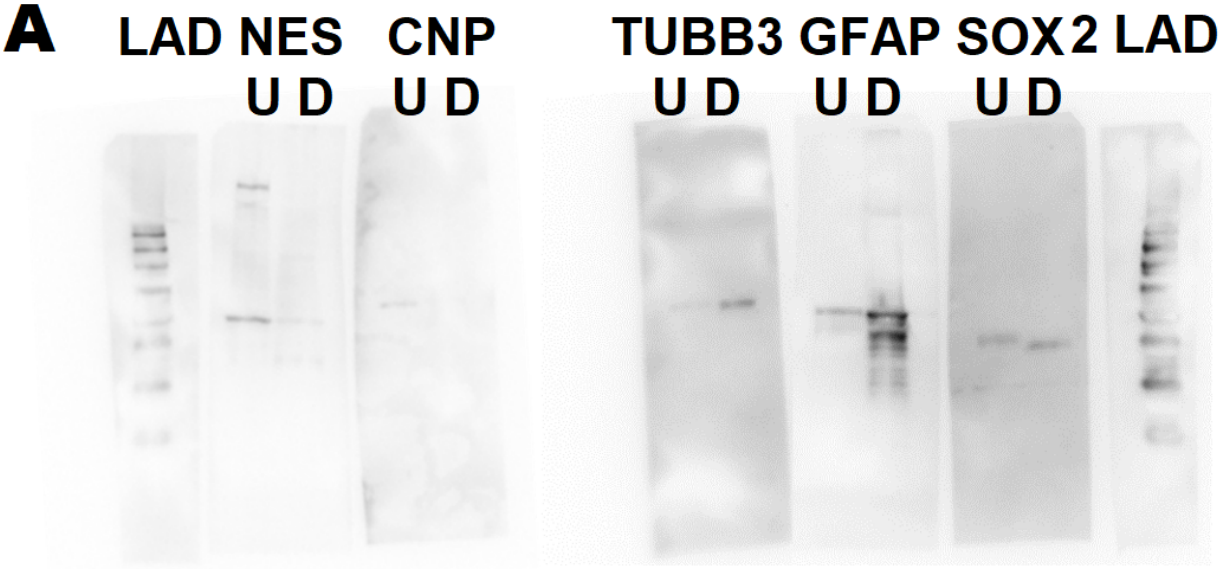


Figure S3

