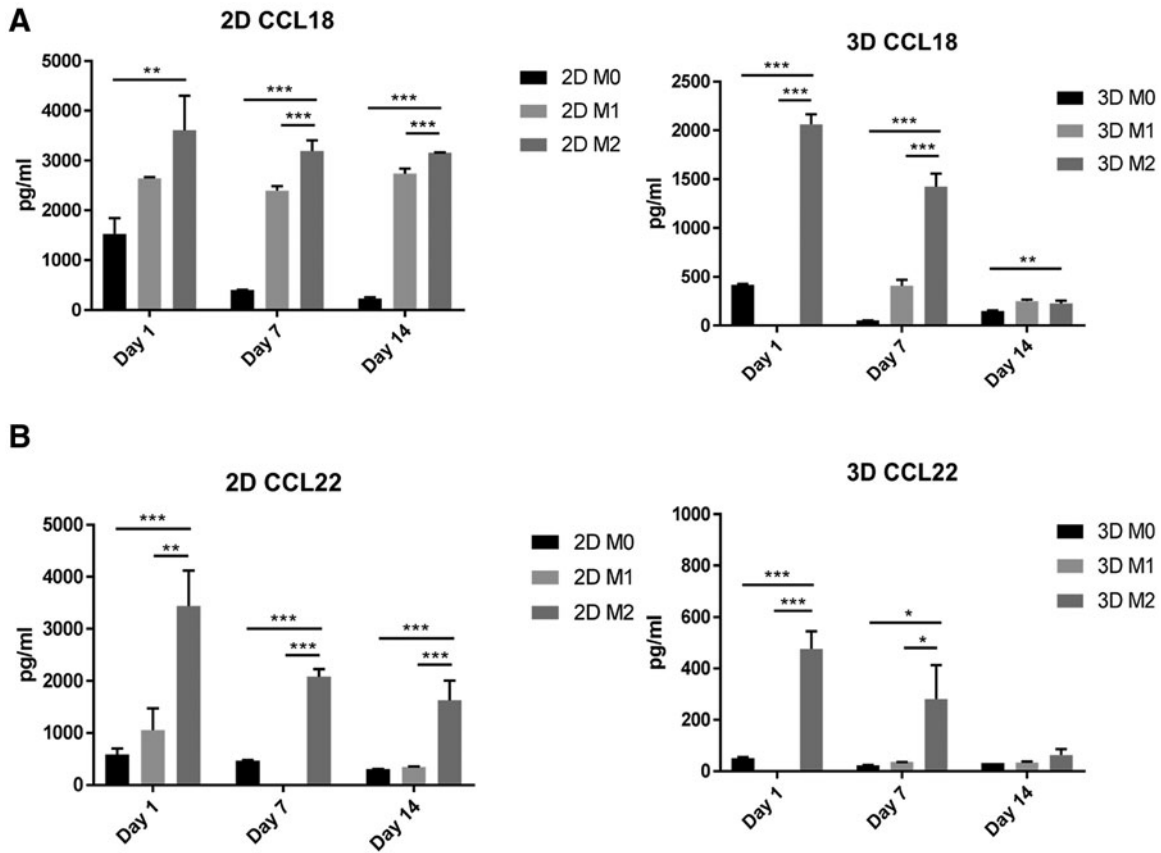
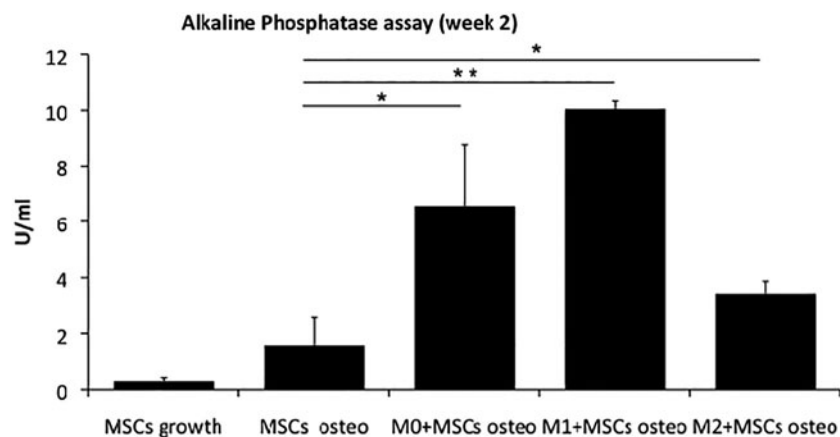


### M2-associated markers ELISA-Supplement



**SUPPLEMENTARY FIG. S3.** Macrophage polarization in 2D and 3D cultures to M2 phenotype. (A) Secretion of CCL18 and (B) CCL22 in (left) 2D and (right) 3D by M0, M1, and M2 macrophages after polarizations on days 1, 7, and 14, assessed by ELISA. Each value represents the mean  $\pm$  SD. \* $p < 0.05$ , \*\* $p < 0.01$ , and \*\*\* $p < 0.001$  compared with either 2D M0 or 3D M0 cultures. CCL, C-C motif chemokine ligand.



**SUPPLEMENTARY FIG. S4.** Macrophage effects in osteogenesis after 2 weeks of culture. Alkaline phosphatase quantification. Quantification of alkaline phosphatase present in the cultures of MSCs in growth medium, MSCs in osteogenic medium, and MSCs with M0, M1, and M2 co-cultures in osteogenic medium in 3D scaffolds after 2 weeks. Each value represents the mean  $\pm$  standard deviation. \* $p < 0.05$  and \*\* $p < 0.01$  compared to MSCs in osteogenic medium. MSC, mesenchymal stem cell.