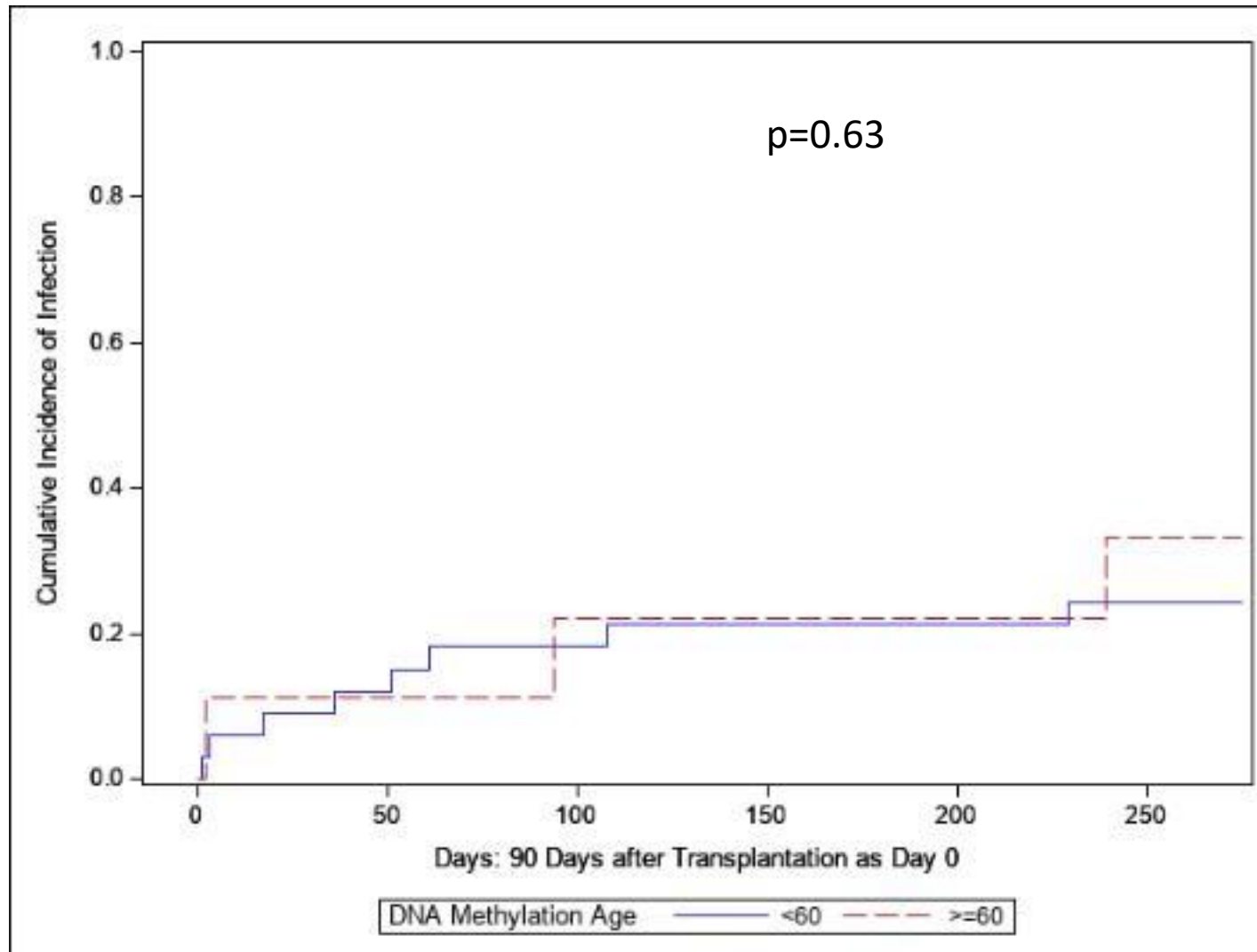
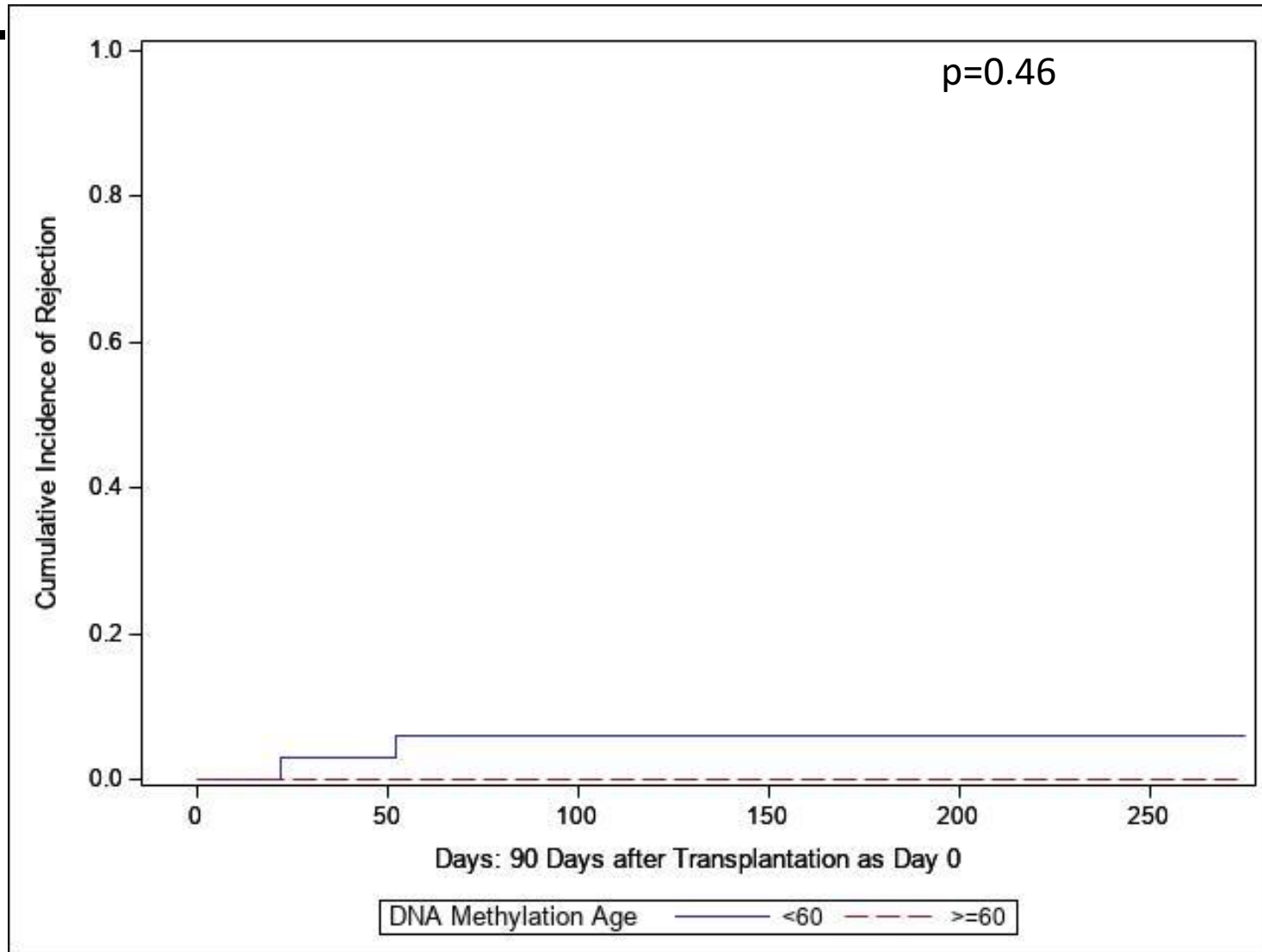


**FIGURE S1. Older compared with younger DNA methylation (DNAm) age and clinical outcomes, restricting outcomes to those occurring 3 months posttransplant. Time to event analysis was performed for older ( $\geq 60$  years) versus younger ( $< 60$  years) DNAm age groups for infection ( $p=0.63$ ) (A), rejection ( $p=0.46$ ) (B), and competing outcomes of infection or rejection ( $p=0.94$ ) (C). Older patients shown by dotted red line and younger patients by solid blue line. Statistical analysis for competing events was performed using Gray's test.**

A.



**B.**



C.

