

Figure S1: Implanted material Maxgraft®. Representative uCT picture of the Maxgraft® granules pre- and post- implantation. (scale bar = 1mm).

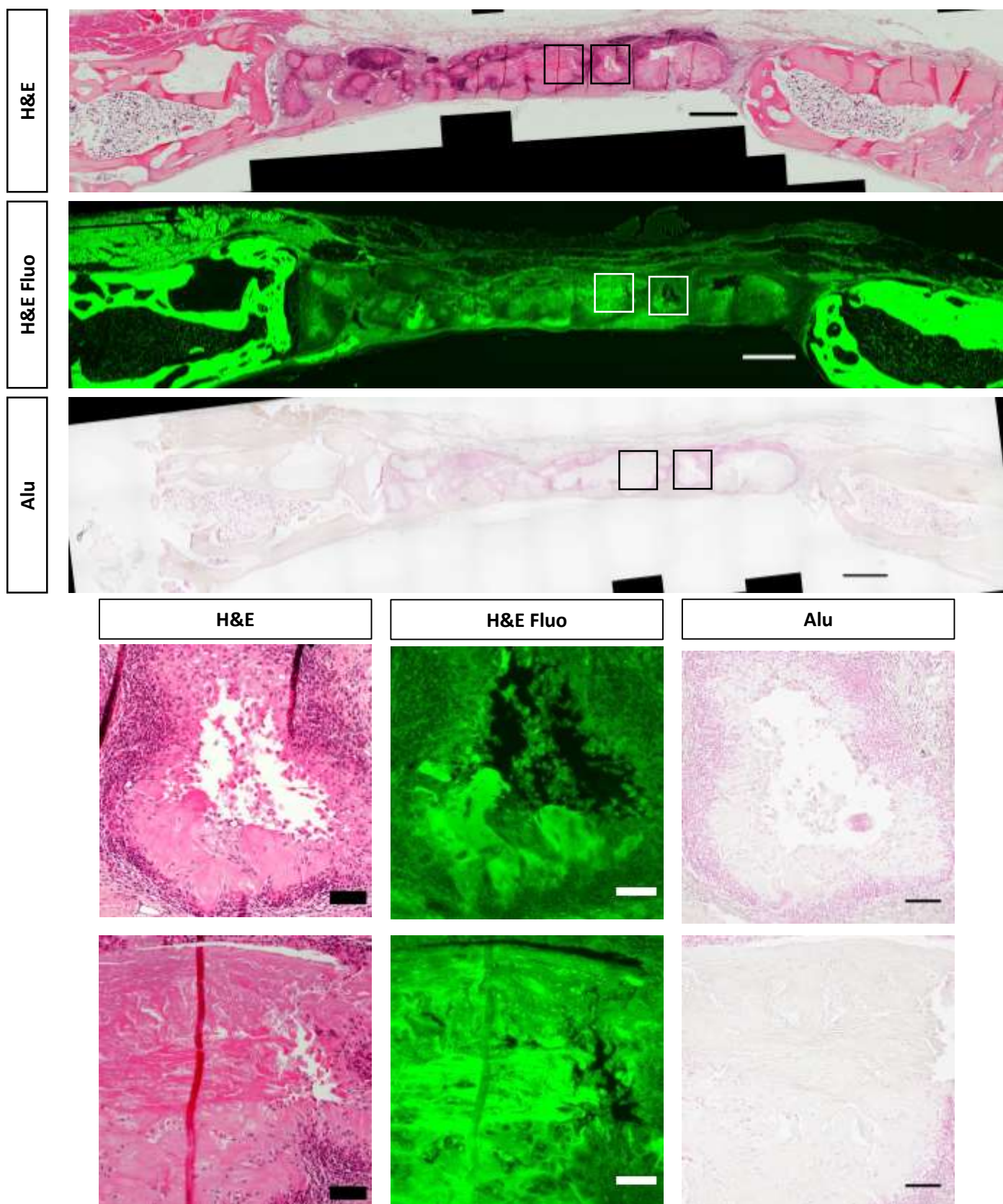


Figure S2: Histological analysis of ECM implanted rabbit calvarial defect. H&E stains bone in deep pink and shows the autofluorescence of the collagen from the eosin staining. Alu staining stains positively (purple) by in-situ hybridization for human specific Alu sequences. (scale bar = 1-mm for whole section and 100- μ m for close up).